

**Christine M. Goodwin**  
*Acting Director*

**Piyaporn Nawarat, Ed.D.**  
*Associate Director*

**Amy Filadelfo**  
*Research Analyst*

**Mary Siconolfi**  
*Senior Secretary*

**Graduate Students:**  
Rufina Eframi  
Justine Koo

**Undergraduates:**  
Fabian Givens  
Xiu Qing Lin  
Alison Schwartz  
Jim Tsui



# ST. JOHN'S UNIVERSITY

## Fact Book

**Fall 2015  
General Section**

---

***Office of Institutional Research***  
Newman Hall B22

***Phone: (718) 990-1869 Fax: (718) 990-2314***  
[\*ir@stjohns.edu\*](mailto:ir@stjohns.edu)  
[\*stjohns.edu/about/ir\*](http://stjohns.edu/about/ir)



## Fall 2015 Fact Book Table of Contents

---

<b>GENERAL INFORMATION.....</b>	<b>General</b>
<b>Mission Statement</b>	<b>1</b>
<b>University Crest</b>	<b>2</b>
<b>Core values</b>	<b>3</b>
<b>Strategic Priorities</b>	<b>4</b>
<b>At A Glance</b>	<b>5</b>
<b>Libraries At A Glance</b>	<b>6</b>
<b>University Organizational Chart</b>	<b>7</b>
<b>Accreditation</b>	<b>8</b>
<b>Academic Service-Learning</b>	<b>9</b>



# ST. JOHN'S UNIVERSITY

## St. John's University is Catholic, Vincentian, and Metropolitan.

**As a university,** we commit ourselves to academic excellence and the pursuit of wisdom which flows from free inquiry, religious values and human experience. We strive to preserve and enhance an atmosphere in which scholarly research, imaginative methodology, global awareness, and an enthusiastic quest for truth serve as the basis of a vital teaching-learning process and the development of lifelong learning. Our core curriculum in the liberal arts and sciences aims to enrich lives as well as professions and serves to unify the undergraduate experience. Graduate and professional schools express our commitment to research, rigorous standards, and innovative application of knowledge. We aim not only to be excellent professionals with an ability to analyze and articulate clearly what is, but also to develop the ethical and aesthetic values to imagine and help realize what might be.

**St. John's is a Catholic university,** founded in 1870 in response to an invitation of the first Bishop of Brooklyn, John Loughlin, to provide the youth of the city with an intellectual and moral education. We embrace the Judeo-Christian ideals of respect for the rights and dignity of every person and each individual's responsibility for the world in which we live. We commit ourselves to create a climate patterned on the life and teaching of Jesus Christ as embodied in the traditions and practices of the Roman Catholic Church. Our community, which comprises members of many faiths, strives for an openness which is "wholly directed to all that is true, all that deserves respect, all that is honest, pure, admirable, decent, virtuous, or worthy of praise" (Philippians 4:8). Thus, the university is a place where the church reflects upon itself and the world as it engages in dialogue with other religious traditions.

**St. John's is a Vincentian university,** inspired by St. Vincent de Paul's compassion and zeal for service. We strive to provide excellent education for all people, especially those lacking economic, physical, or social advantages. Community service programs combine with reflective learning to enlarge the classroom experience. Wherever possible, we devote our intellectual and physical resources to search out the causes of poverty and social injustice and to encourage solutions which are adaptable, effective, and concrete. In the Vincentian tradition, we seek to foster a world view and to further efforts toward global harmony and development, by creating an atmosphere in which all may imbibe and embody the spirit of compassionate concern for others so characteristic of Vincent.

**St. John's is a metropolitan and global university.** As a metropolitan university, we benefit from New York City's cultural diversity, its intellectual and artistic resources, and its unique professional educational opportunities. With this richness comes responsibility. We encourage the metropolitan community to use our resources to serve its needs. As a global university, we are one of our nation's most diverse institutions of higher education, enriched by a mixture of cultures, which complements an internationalized curriculum. Through collaboration with other institutions around the world, study abroad opportunities, and online courses and degrees, our outreach spans the globe. In educating students we pledge to foster those qualities needed for our alumni to become effective leaders and responsible citizens in a vibrant city and dynamic world.

*Mission Statement of St. John's University, New York  
Approved by the Board of Trustees, December 1991  
Modified and re-approved March 1999, March 2008, October 2015*



# ST. JOHN'S UNIVERSITY

## University Crest

The redesigned crest restores the original blue and red, liturgical colors evoking the “Blessed Virgin and the Humanity of Her Divine Son.” The white cross at its center further identifies Christ as the foundation and model for a moral, ethical character, as does the motto *Ecce Agnus* (“Behold the Lamb of God”), recalling St. John the Baptist’s testimony to the divinity of Christ. The fleur-de-lis symbolizes France, homeland of St. Vincent de Paul. The heart represents his commitment to charity. The scalloped shell—an ancient symbol of the sacrament of baptism—signifies St. James the Greater, titular of the cathedral of the Diocese of Brooklyn, where the University was founded. The shell also recalls a Native American name for Long Island: “Sewanhacky” (“Island of Shells”).

Especially prominent is the banner encircling the lower half of the crest. It bears the motto *Educatio Christiana Animae Perfectio* (Christian education perfects the soul), a testament to the ethos that guides St. John's University.



# ST. JOHN'S UNIVERSITY

## Core Values

### Truth

Knowledge in accord with reality, behavior faithful to ethical standards. St. John's affirms the threefold mission of a university to seek truth through research, to disseminate it through teaching and to act on it. The University values and utilizes the perspective of different cultures to assist its members in seeking truth and developing ethical standards, while affirming Judeo-Christian tradition.

### Love

Focusing and extending minds and hearts to nurture one's own and another's good. Love expressed in the University community is not a feeling but an action for the corporate good manifested through the time, talent and energy of its members. It is a responsible dedication to utilize available resources and turn them towards humanity's good.

### Respect

Awareness of and esteem for all individuals. A courteous regard for all people whose diversity is embraced and shared in learning, teaching and service to others within the University community and beyond.

### Opportunity

Circumstances favorable to serving others and preparing one's self for a fulfilling life, Guided by its central commitment to equality, justice and Christian morality, the University makes its resources available to all its members to pursue their individual and collective efforts.

### Excellence

Striving, growing, never being complacent. The St. John's Community empowers and inspires students, staff, faculty and administration to succeed in programs which assist them in every area of achievement.

### Service

Vincenzian spirituality in action, a response to God's call to give of ourselves. Our obligation and commitment to service lie not only in our active compassion as an institution, but the cultivation of these priorities and values in the members of our community. We are commanded to a life of stewardship as a caretaker of God-given talents, resources and knowledge, and caregiver responding to the needs of others.



# ST. JOHN'S UNIVERSITY

## Strategic Priorities

---

1. Ensure student success
2. Recruit, recognize, and retain the best faculty, staff, and administrators
3. Enhance our teaching and learning environment
4. Expand global and community partnerships

October 2014

## **At a Glance – Fall 2015**

### **BACKGROUND**

- Founded by the Vincentian Community in 1870
- Mission: A Catholic, Vincentian, Metropolitan and Global University
- Core Values: truth, love, respect, opportunity, excellence, and service

### **ADMINISTRATION, FACULTY, AND STAFF**

- President: Conrado "Bobby" Gempesaw, Ph.D. - *17<sup>th</sup> President*
- A budget of **\$447** million; and a market value of University's investment portfolio of **\$692.3** million as of May 31, 2015.
- **\$10,697,545** in awarded grants funds; **122** proposals submitted
- Over **2,900** employees including:
  - Faculty: Full-time – **627**; Part-time – **823**; Full-time Equivalent (FTE): **957**
  - Administrators: Full-time – **731**; Part-time – **91**
  - Staff: Full-time – **422**; Part-time – **215**

### **COMPOSITION**

- Full degree programs offered on four campuses – Queens, Staten Island, Manhattan, and Rome, Italy; selected degree programs are offered through online learning.
- Coursework, but not full degrees, are offered at Oakdale, Eastern Long Island, and at study abroad sites in Paris, France and Seville, Spain.
- Six schools and colleges:
  - St. John's College of Liberal Arts and Sciences*
  - The School of Education*
  - The Peter J. Tobin College of Business*
  - College of Pharmacy and Health Sciences*
  - College of Professional Studies*
  - School of Law*
- Over one hundred undergraduate and graduate majors
- Approximate acreage: Queens - **96.5** acres; Staten Island - **16.5** acres; Oakdale - **175** acres

### **STUDENTS**

- Fall 2015 Total Enrollment: – **20,881**
  - Undergraduate – **16,210**; Graduate – **4,671**
  - Freshmen – **3,253**
- Resident students living on: Queens – **3,297**; Staten Island – **123**
- Students come from **47** states, the District of Columbia, Puerto Rico, US Virgin Islands and **123** countries
- **1,208** Non-Resident (International) from **106** countries
- Average ages: undergraduate – **19** ; graduate – **28** ; new freshmen – **18**
- **58%** female, **42%** male
- **45%** Roman Catholic
- **44%** are Black, Hispanic, Asian, Native Hawaiian/Pacific Islander, American Indian, Alaska Native, or Two or More Races
- Composite full-time baccalaureate 1<sup>st</sup> year retention rate: 2007-2014 entering classes - **78%**; 2014 entering class - **80%**
- Composite full-time baccalaureate 6-year graduation rate: 2007-2009 entering classes- **58%**; 2009 entering class - **58%**
- **3,984** degrees conferred in the 2014-2015 academic year

### **ANNUAL EXPENSES (2015-2016)**

- Undergraduate Tuition: Q/M/Online - **\$37,870**; SI - **\$27,500** (varies by program and class year)  
Fees: **\$810** Room (double)/board: **\$16,390** Four-year fixed tuition rate available
- Graduate Tuition - **\$1,145** per credit (varies by program)

### **FINANCIAL AID INFORMATION (2015-2016)**

- **95%** of undergraduates received financial aid
- **\$471** million distributed in financial aid
- **\$220** million of university monies distributed to students
- **43%** of the 2015 freshmen are considered Pell-eligible/Very High Need

### **ATHLETICS**

- **17** Division 1 NCAA teams
- Annually, approximately **300** student athletes
- Team name – **Red Storm** Team Mascot – **Johnny Thunderbird**

### **ALUMNI**

- Over **175,000** living alumni
- **81%** in the New York metropolitan area



**ST. JOHN'S  
UNIVERSITY**

## **Libraries At a Glance**

### **Locations**

- Four campuses: Queens, Staten Island, Manhattan, NY, & Rome, Italy and at our Oakdale, Eastern Long Island location
- Four major libraries:
  - Queens Main Library (QL), Queens
  - Rittenberg Law Library (RLL), Queens
  - Loretto Library (LL), Staten Island
  - Davis Library (DL), Manhattan

### **Collections**

- Volumes held: **1.8 million**
- Paper materials in all formats: **837,976**
- Serials in electronic format: **84,980**
- Other media all formats: **5,030**
- Licensed electronic resources: **214** databases (indexing & abstracts and full text)

### **Distinctive and Specialized Collections**

- University Archives (QL)
- Special Collections: rare books, manuscripts, exhibition catalogs, fine art, Wm. M. Fischer Lawn Tennis Collection, Joseph C. Myer Collection (history of accounting) (QL)
- Chin Ying Asian Library
- Instructional Materials Center (QL) and Educational Materials Collection (LL)
- Ronald H. Brown Civil Rights Collection and Hugh L. Carey Papers (RLL)
- Law School Archives (RLL)
- Numerous named special insurance materials collections (DL)
- Selective U.S. Government Documents Depository Libraries:
  - Queens Main Library: **12%** selection
  - Rittenberg Law Library: **22%** selection; also NY State & UN documents depository **100%** selection
  - Davis Library: **17%** selection

### **Services**

- Instructional Services: in-person information literacy instruction, online tutorials, and other group instruction (RefWorks, TurnItIn, CampusGuides, etc.) by appointment
- Reference Services: in-person, email, mobile devices, one-on-one consultations (by appointment)
- Reserve Services: print and electronic
- Interlibrary Loan: domestic and international borrowing & lending via ILLiad
- Independent services for users: online requests and renewal of materials
- 24/7 Quiet Study room: current students only

### **Technology**

- Wireless computing and printing (QL, LL, DL, RLL)
- Computer classrooms: **3** (QL, RLL, LL)
- Public access computers, total all campuses: **124**

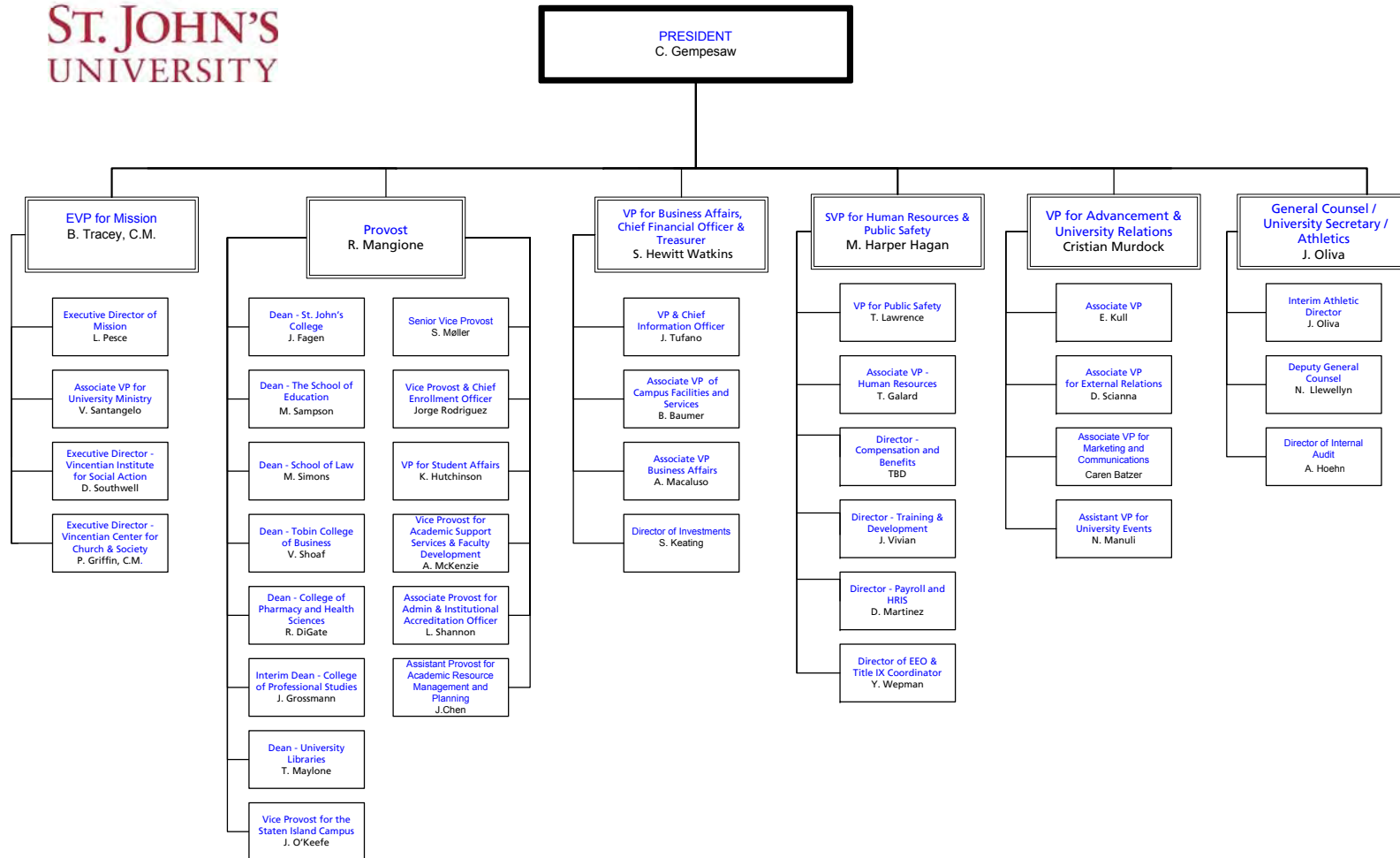
### **Access**

- Average service hours per week: **100**
- 24/7 electronic access (on- and off-campus):
  - Libraries' Portal: <http://libraries.stjohns.edu/>
  - Online catalog (free to all): <http://stjohns.waldo.kohalibrary.com>
  - Licensed electronic resources: current St. John's students, faculty, staff & administrators only





# Organizational Chart



as of January 19, 2016



**Regional Accreditation**

***Middle States Commission on Higher Education***

3624 Market Street, 2nd Floor West, Philadelphia, PA 19104

Telephone: (267) 284-5000

E-mail: [info@msche.org](mailto:info@msche.org) Spanish: [españolinfo@msche.org](mailto:españolinfo@msche.org)

*The Middle States Commission on Higher Education is an institutional accrediting agency recognized by the U.S. Secretary of Education and the Council for Higher Education Accreditation.*

**Specialized Accreditation by School/College**

**St. John's College of Liberal Arts and Science**

***ALA—American Library Association***

*M.S. Library and Information Science*

***APA—American Psychological Association***

*Ph.D. Clinical Psychology, Psy.D. School Psychology*

***CAA—Council on Academic Accreditation – American Speech-Language-Hearing Association***

*M.A. Speech Language Pathology*

***NASAD—National Association of Schools of Art and Design***

*Programs in Department of Art and Design*

**The School of Education**

***CACREP—Council for Accreditation of Counseling and Related Education Programs***

*M.S.Ed. Clinical Mental Health Counseling, M.S.Ed. School Counseling*

***TEAC—Teacher Education Accreditation Council***

*All Undergraduate and Graduate Teacher Preparation Programs*

**The Peter J. Tobin College of Business**

***AACSB International—Association to Advance Collegiate Schools of Business:***

*Undergraduate & Graduate Programs*

*Department of Accounting & Taxation (Separate Accreditation)*

**College of Pharmacy and Health Sciences**

***ACPE—Accreditation Council for Pharmacy Education***

*Doctor of Pharmacy, Pharmacy Continuing Education*

***ARC-PA—Accreditation Review Commission on Education for the Physician Assistant***

*B.S. Physician Assistant*

***JRCERT—Joint Review Committee on Education in Radiologic Technology***

*B.S. Radiologic Technology*

***NAACLS—National Accrediting Agency for Clinical Laboratory Sciences***

*B.S. Clinical Laboratory Sciences*

**College of Professional Studies**

***ABA—American Bar Association***

*B.S. Legal Studies – program approval*

**School of Law**

***ABA—American Bar Association***

*J.D. Juris Doctor*

---

*Chartered by the Regents of the University of the State of New York*

*Certified by the NCAA - National Collegiate Athletic Association*

*Accredited by the AAALAC – Association for Assessment and Accreditation of Laboratory Animal Care International*

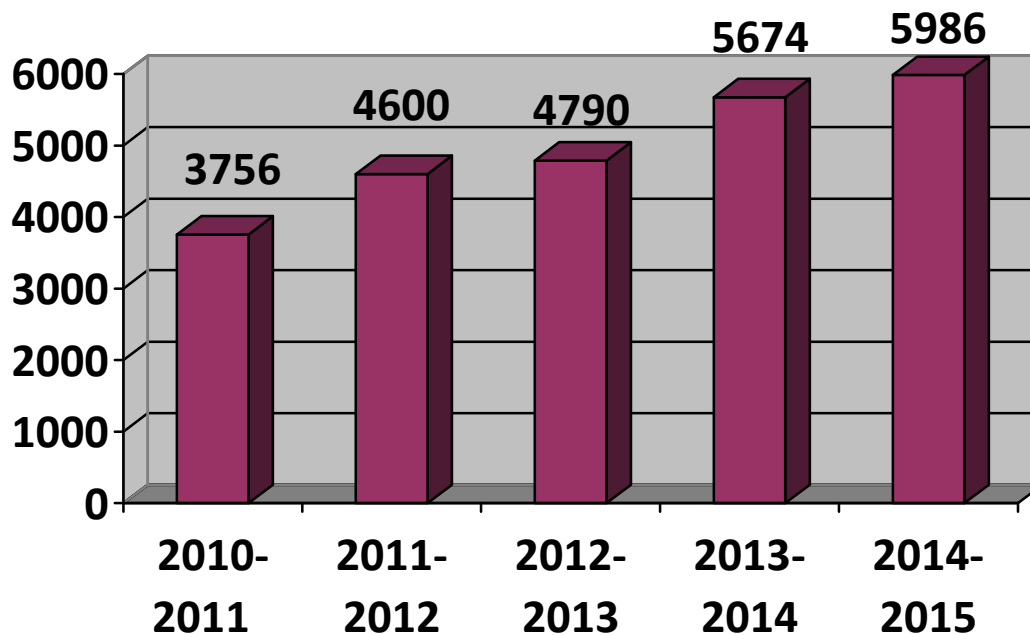


**ST. JOHN'S  
UNIVERSITY**

## **Academic Service-Learning Fall 2014 – Spring 2015**

- ❖ **Fall 2014**
  - 3,124 students participated
  - 200 faculty members participated
- ❖ **Spring 2015**
  - 3,342 students participated
  - 190 faculty members participated
- ❖ **Between the two semesters, 5,986 unique students participated.**
- ❖ **Between the two semesters, 237 unique faculty members participated.**
- ❖ **The majority of the students who participated completed 15 or more hours of Academic Service-Learning.**

### **Student Participation**



Students are counted only once (unduplicated) for the academic year, consistent with the faculty participants.

Source: The Office of Academic Service-Learning