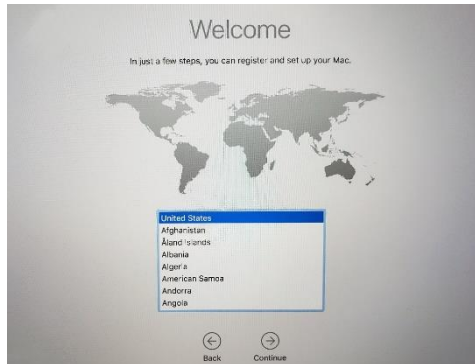


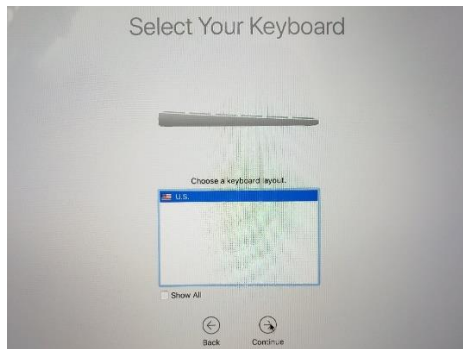


Setting up Your Student MacBook Pro

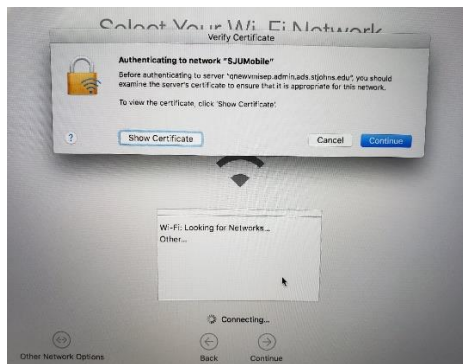
1. Choose: UNITED STATES, click CONTINUE



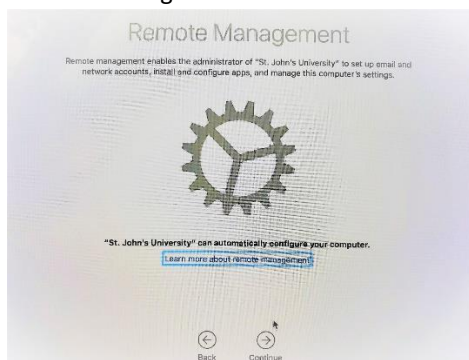
2. Select Your Keyboard: U.S., click CONTINUE



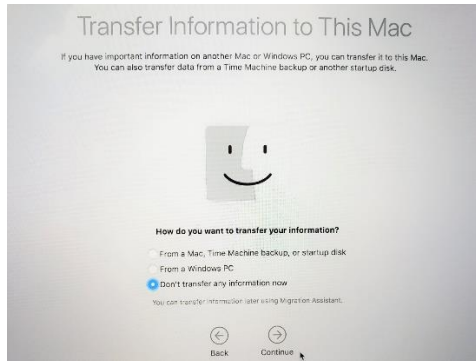
3. Select Your Wi-Fi Network: Login to any wireless network. If you are on campus, you will choose, "SJUMobile."



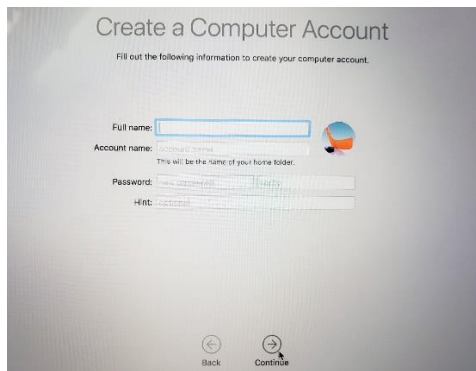
4. Remote Management: This will enable us to remotely assist you and is required as part of the Academic Computing Initiative.



5. Transfer Information to This Mac: Don't Transfer any information



6. Create a Computer Account



7. Once completed, a notification will appear that says "Software Completed."

