

**Office of Institutional Research**

**Spring 2015 – Student Evaluation of Teaching**

**Overview**

-The following are the value labels for the aggregated results pertaining to each question:

**Value Labels**

**Questions 1.1 - 1.11**

- 5 – Strongly Agree
- 4 – Agree
- 3 – Somewhat Agree
- 2 – Disagree
- 1 – Strongly Disagree

**Question 1.12 – Course Pace**

- 5 – Very Fast
- 4 – Fast
- 3 – Just about right
- 2 – Slow
- 1 – Very slow

**Question 1.13 – Professor’s Teaching**

- 5 – Excellent
- 4 – Good
- 3 – Fair
- 2 – Poor
- 1 – Very poor

For any questions related to the evaluations, please contact:

Steven W. Glogocheski, Ed.D.  
Associate Director of Academic Assessment  
718-990-6998  
glogochs@stjohns.edu

# Spring 2015 - GR College of Professional Studies (47%)

No. of responses = 208

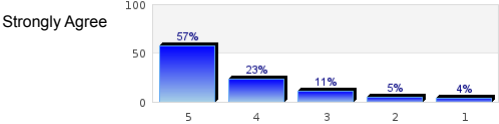


## Survey Results

### Student Evaluation of Teaching

The course goals and grading procedures were clear.	Strongly Agree		Strongly Disagree	n=208 av.=4.28 dev.=1.01
Lectures and other class activities were well organized.	Strongly Agree		Strongly Disagree	n=207 av.=4.24 dev.=1.03
The instructor's presentations were clear and understandable.	Strongly Agree		Strongly Disagree	n=207 av.=4.25 dev.=1.07
The instructor conveyed interest and enthusiasm in the subject matter.	Strongly Agree		Strongly Disagree	n=207 av.=4.54 dev.=0.82
The instructor satisfactorily answered students' questions.	Strongly Agree		Strongly Disagree	n=208 av.=4.37 dev.=0.98
The instructor was accessible to students for extra help.	Strongly Agree		Strongly Disagree	n=201 av.=4.42 dev.=0.92 ab.=7
The instructor responded to students' work in a reasonable amount of time.	Strongly Agree		Strongly Disagree	n=206 av.=4.39 dev.=0.96 ab.=1
Tests, papers, and/or other assignments were graded fairly.	Strongly Agree		Strongly Disagree	n=204 av.=4.36 dev.=1.01 ab.=2
This course increased my understanding of the subject matter.	Strongly Agree		Strongly Disagree	n=207 av.=4.34 dev.=1.02 ab.=1

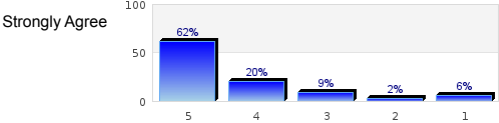
This course increased my ability to think critically.



Strongly Disagree

n=207  
av.=4.26  
dev.=1.08  
ab.=1

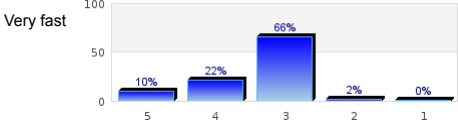
I would recommend this instructor to other students.



Strongly Disagree

n=206  
av.=4.29  
dev.=1.14

Rate the pace at which the course material was taught.

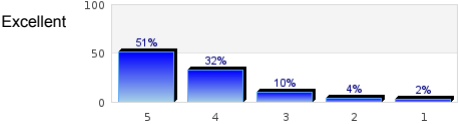


Very fast

Very slow

n=204  
av.=3.38  
dev.=0.71

Rate this professor's teaching.



Excellent

Very poor

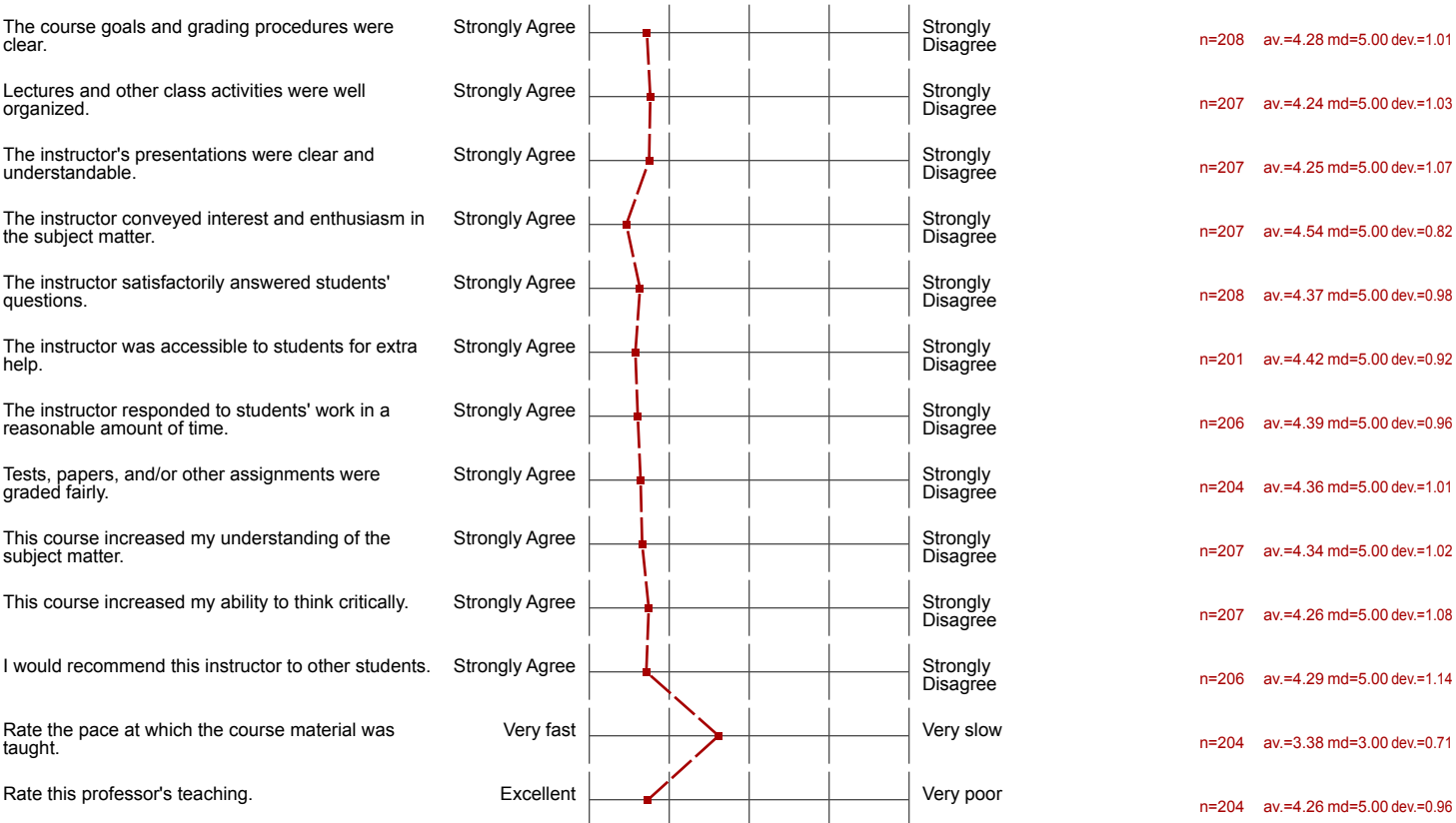
n=204  
av.=4.26  
dev.=0.96

# Profile

Compilation: Spring 2015 - GR College of Professional Studies (47%)

Values used in the profile line: Mean

## Student Evaluation of Teaching



# Profile

█ **Compilation:** Spring 2015 - GR College of Professional Studies (47%)

█ **Comparative line:**  
█ **Compilation:** Spring 2015 - GR St. John's University (60%)

Values used in the profile line: Mean

**Student Evaluation of Teaching**

