

Office of Institutional Research

Spring 2014 – Student Evaluation of Teaching

Overview

-The following are the value labels for the aggregated results pertaining to each question:

Value Labels

Questions 1.1 - 1.11

- 5 – Strongly Agree
- 4 – Agree
- 3 – Somewhat Agree
- 2 – Disagree
- 1 – Strongly Disagree

Question 1.12 – Course Pace

- 5 – Very Fast
- 4 – Fast
- 3 – Just about right
- 2 – Slow
- 1 – Very slow

Question 1.13 – Professor’s Teaching

- 5 – Excellent
- 4 – Good
- 3 – Fair
- 2 – Poor
- 1 – Very poor

For any questions related to the evaluations, please contact:

Steven W. Glogocheski
Associate Director of Academic Assessment
718-990-6998
glogochs@stjohns.edu

Spring 2014 - GR College of Pharmacy (53%)

No. of responses = 110

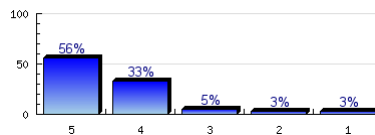


Survey Results

Student Evaluation of Teaching

The course goals and grading procedures were clear.

Strongly Agree

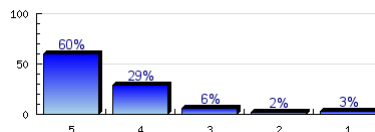


Strongly Disagree

n=108
av.=4.38
dev.=0.91
ab.=1

Lectures and other class activities were well organized.

Strongly Agree

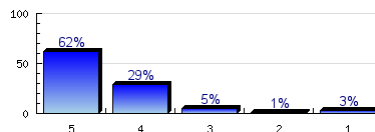


Strongly Disagree

n=109
av.=4.41
dev.=0.9
ab.=1

The instructor's presentations were clear and understandable.

Strongly Agree

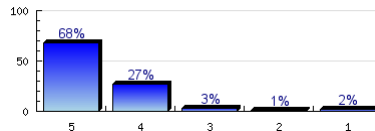


Strongly Disagree

n=109
av.=4.48
dev.=0.86
ab.=1

The instructor conveyed interest and enthusiasm in the subject matter.

Strongly Agree

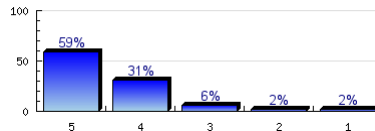


Strongly Disagree

n=109
av.=4.58
dev.=0.76
ab.=1

The instructor satisfactorily answered students' questions.

Strongly Agree

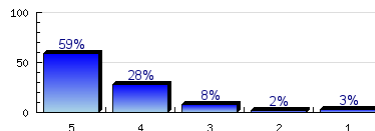


Strongly Disagree

n=108
av.=4.44
dev.=0.85
ab.=1

The instructor was accessible to students for extra help.

Strongly Agree

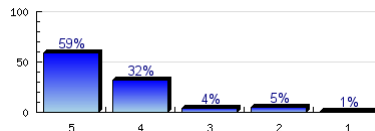


Strongly Disagree

n=102
av.=4.38
dev.=0.93
ab.=7

The instructor responded to students' work in a reasonable amount of time.

Strongly Agree

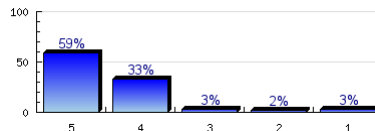


Strongly Disagree

n=104
av.=4.42
dev.=0.86
ab.=6

Tests, papers, and/or other assignments were graded fairly.

Strongly Agree

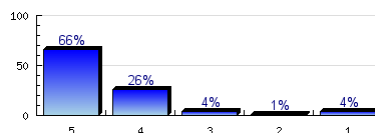


Strongly Disagree

n=103
av.=4.44
dev.=0.88
ab.=7

This course increased my understanding of the subject matter.

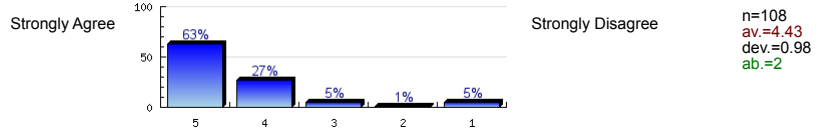
Strongly Agree



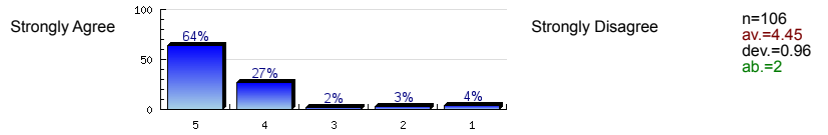
Strongly Disagree

n=109
av.=4.5
dev.=0.91
ab.=1

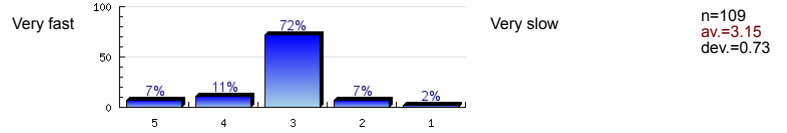
This course increased my ability to think critically.



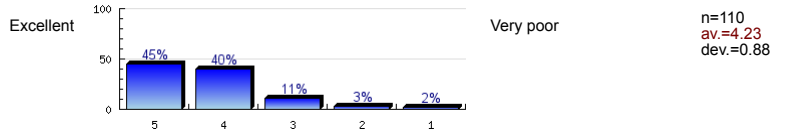
I would recommend this instructor to other students.



Rate the pace at which the course material was taught.



Rate this professor's teaching.

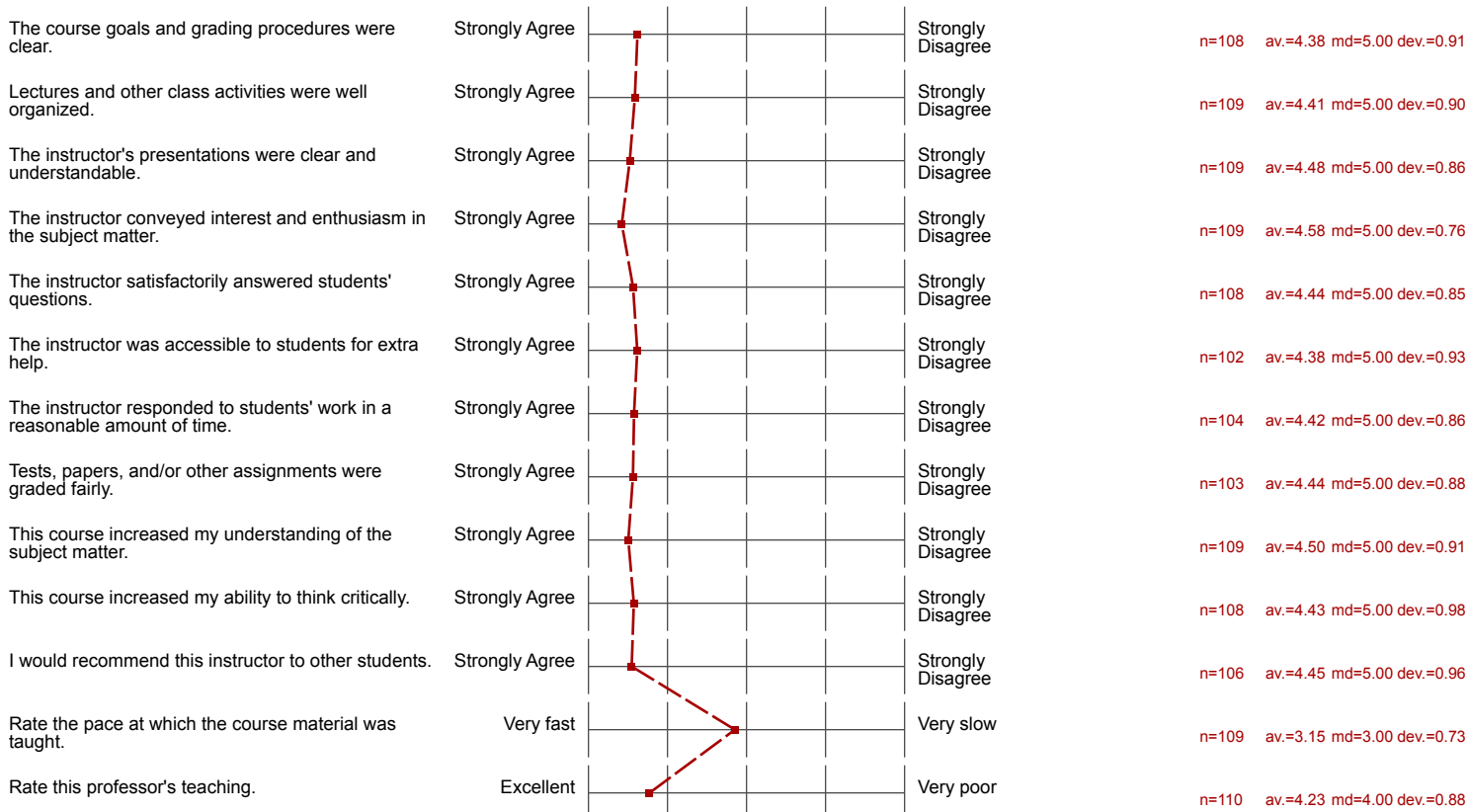


Profile

Compilation: Spring 2014 - GR College of Pharmacy (53%)

Values used in the profile line: Mean

Student Evaluation of Teaching



Profile

Compilation: Spring 2014 - GR College of Pharmacy (53%)

Comparative line:
Compilation: Spring 2014 - GR St. John's University (55%)

Values used in the profile line: Mean

Student Evaluation of Teaching

The course goals and grading procedures were clear.

n=108 av.=4.38 md=5.00 dev.=0.91
n=3160 av.=4.30 md=5.00 dev.=0.96

Lectures and other class activities were well organized.

n=109 av.=4.41 md=5.00 dev.=0.90
n=3150 av.=4.24 md=5.00 dev.=1.00

The instructor's presentations were clear and understandable.

n=109 av.=4.48 md=5.00 dev.=0.86
n=3136 av.=4.29 md=5.00 dev.=0.97

The instructor conveyed interest and enthusiasm in the subject matter.

n=109 av.=4.58 md=5.00 dev.=0.76
n=3160 av.=4.55 md=5.00 dev.=0.81

The instructor satisfactorily answered students' questions.

n=108 av.=4.44 md=5.00 dev.=0.85
n=3161 av.=4.43 md=5.00 dev.=0.90

The instructor was accessible to students for extra help.

n=102 av.=4.38 md=5.00 dev.=0.93
n=3028 av.=4.44 md=5.00 dev.=0.86

The instructor responded to students' work in a reasonable amount of time.

n=104 av.=4.42 md=5.00 dev.=0.86
n=3085 av.=4.36 md=5.00 dev.=0.95

Tests, papers, and/or other assignments were graded fairly.

n=103 av.=4.44 md=5.00 dev.=0.88
n=2980 av.=4.41 md=5.00 dev.=0.90

This course increased my understanding of the subject matter.

n=109 av.=4.50 md=5.00 dev.=0.91
n=3155 av.=4.36 md=5.00 dev.=0.96

This course increased my ability to think critically.

n=108 av.=4.43 md=5.00 dev.=0.98
n=3154 av.=4.29 md=5.00 dev.=0.99

I would recommend this instructor to other students.

n=106 av.=4.45 md=5.00 dev.=0.96
n=3136 av.=4.28 md=5.00 dev.=1.06

Rate the pace at which the course material was taught.

n=109 av.=3.15 md=3.00 dev.=0.73
n=3161 av.=3.29 md=3.00 dev.=0.77

Rate this professor's teaching.

n=110 av.=4.23 md=4.00 dev.=0.88
n=3163 av.=4.29 md=5.00 dev.=0.94

