

**Office of Institutional Research**  
**Fall 2013 - St. John's Student Course Evaluations**

**Overview:**

-The report starts with a graph representing **overall indicators**, which are the average scores of various questions on the course evaluation.

- <b>Section A:</b>	“Course Organization and Planning”	(questions 1-3)
- <b>Section B:</b>	“Communication”	(questions 4-6)
- <b>Section C:</b>	“Faculty-Student Interaction”	(questions 7-9)
- <b>Section D:</b>	“Assignments, Exams, and Grading”	(questions 10-14)
- <b>Section E:</b>	“Instructional Methods”	(questions 15-16)
- <b>Section F:</b>	“Course Outcomes”	(questions 17-19)
- <b>Section G:</b>	“Student Effort and Involvement”	(questions 20-22)
- <b>Section H:</b>	“Course Difficulty, Work Load, and Pace”	(questions 23-25)
- <b>Section I:</b>	“Overall Evaluation”	(question 26)

-Each question is then individually assessed using the following scales. Appropriate comparative results are also shown. The percentages next to the name of the college/unit represent the response rate.

-The following are the value labels for the aggregated results pertaining to each question:

**Value Labels**

**Questions 1-22:**

- 5 = Strongly Agree
- 4 = Agree
- 3 = Somewhat Agree
- 2 = Disagree
- 1 = Strongly Disagree

**Question 23 - Course Difficulty:**

- 5 = Very Difficult
- 4 = Difficult
- 3 = About Right
- 2 = Easy
- 1 = Very Easy

**Question 24 - Course Pace:**

- 5 = Very Fast
- 4 = Fast
- 3 = Just about right
- 2 = Slow
- 1 = Very Slow

**Question 25 - Study Hours:**

- 5 = 8 or more hours
- 4 = 6 to 7
- 3 = 4 to 5
- 2 = 2 to 3
- 1 = Under 1 hour

**Question 26 - Overall Evaluation:**

- 5 = Excellent
- 4 = Good
- 3 = Fair
- 2 = Poor
- 1 = Very Poor

For any questions related to course evaluations, please contact:

Steven W. Glogocheski  
Associate Director of Academic Assessment  
718-990-6998  
glogochs@stjohns.edu

# UG College of Pharmacy (34%)

No. of responses = 1351



## Overall indicators

A. Course Organization and Planning		av.=4.2 dev.=1.01
B. Communication		av.=4.05 dev.=1.1
C. Faculty-Student Interaction		av.=4.06 dev.=1.09
D. Assignments, Exams, and Grading		av.=4.1 dev.=1.06
E. Instructional Methods		av.=4.11 dev.=1.03
F. Course Outcomes		av.=4 dev.=1.15
G. Student Effort and Involvement		av.=4.37 dev.=0.84
H. Course Difficulty, Work Load, and Pace		av.=2.87 dev.=0.94
I. Overall Evaluation		av.=3.8 dev.=1.05

## Survey Results

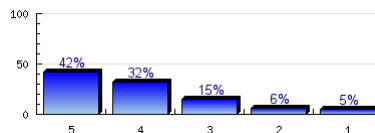
### A. Course Organization and Planning

1. The course goals, objectives, and grading procedures were clearly explained.	Strongly Agree		Strongly Disagree	n=1316 av.=4.2 dev.=1.01 ab.=7
2. Lectures and other class activities were well organized.	Strongly Agree		Strongly Disagree	n=1306 av.=4.06 dev.=1.09 ab.=13
3. The instructor was regularly punctual and regularly kept the class for the full class time.	Strongly Agree		Strongly Disagree	n=1305 av.=4.32 dev.=0.93 ab.=13

### B. Communication

4. The instructor's presentations were clear and understandable.

Strongly Agree

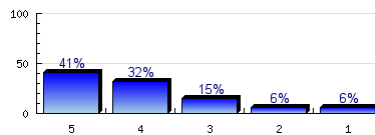


Strongly Disagree

n=1307  
av.=4.01  
dev.=1.11  
ab.=12

5. The instructor adequately explained abstract or complex materials so that I understood it.

Strongly Agree

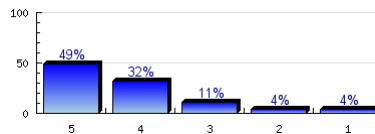


Strongly Disagree

n=1305  
av.=3.95  
dev.=1.16  
ab.=13

6. The instructor conveyed interest and enthusiasm in the subject matter.

Strongly Agree



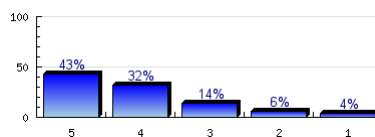
Strongly Disagree

n=1308  
av.=4.18  
dev.=1.04  
ab.=9

C. Faculty-Student Interaction

7. The instructor encouraged student discussion and participation.

Strongly Agree

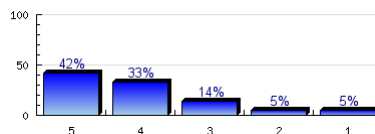


Strongly Disagree

n=1272  
av.=4.04  
dev.=1.09  
ab.=46

8. The instructor satisfactorily answered students' questions.

Strongly Agree

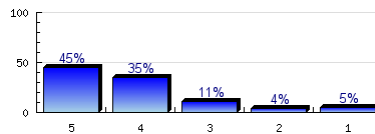


Strongly Disagree

n=1307  
av.=4.03  
dev.=1.11  
ab.=10

9. The instructor was accessible to students during office hours and by email.

Strongly Agree



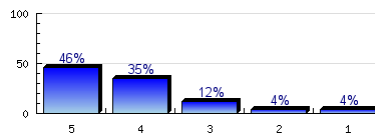
Strongly Disagree

n=1221  
av.=4.13  
dev.=1.06  
ab.=88

D. Assignments, Exams, and Grading

10. The instructor asked questions on the course material.

Strongly Agree

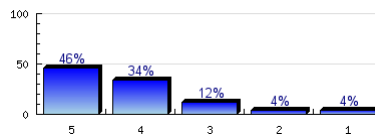


Strongly Disagree

n=1261  
av.=4.15  
dev.=1.02  
ab.=59

11. Students were tested on material covered in the course.

Strongly Agree

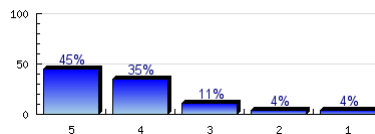


Strongly Disagree

n=1210  
av.=4.14  
dev.=1.04  
ab.=106

12. The instructor returned students' work in a reasonable amount of time.

Strongly Agree

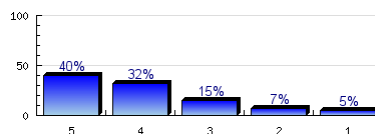


Strongly Disagree

n=1176  
av.=4.14  
dev.=1.04  
ab.=143

13. The instructor provided sufficient feedback on tests and papers.

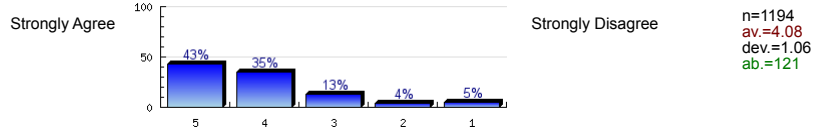
Strongly Agree



Strongly Disagree

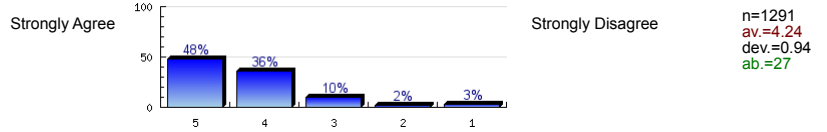
n=1166  
av.=3.96  
dev.=1.14  
ab.=149

14. Tests, papers, and other assignments were graded fairly.

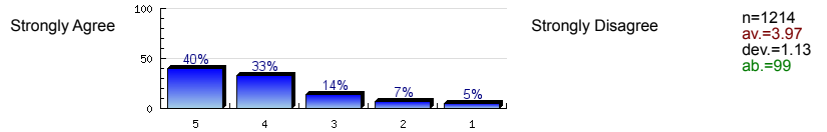


E. Instructional Methods

15. The instructor made appropriate use of technology in teaching.

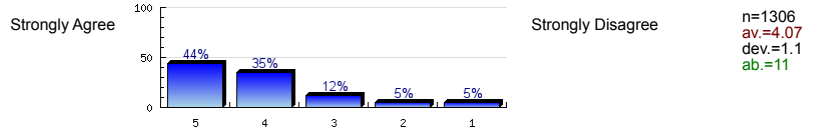


16. Students were actively involved in class discussion, group work, and other classroom activities.

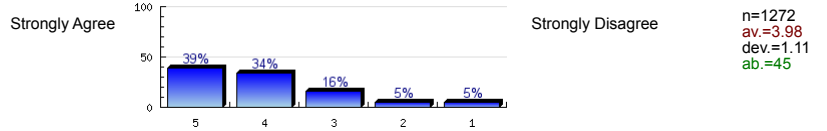


F. Course Outcomes

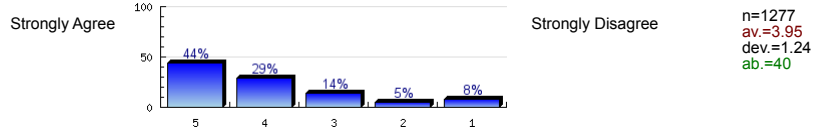
17. This course has increased my understanding of the subject matter.



18. This course increased my ability to think independently and critically.

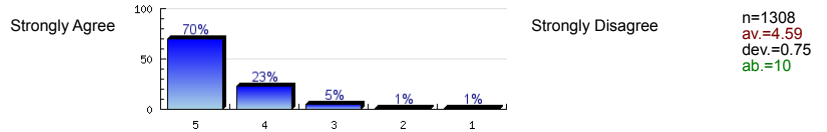


19. I would recommend this instructor to other students.

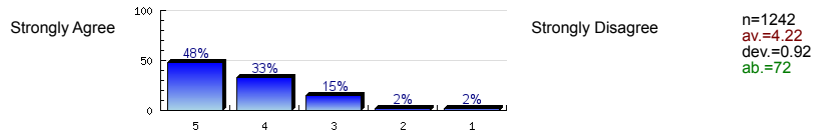


G. Student Effort and Involvement

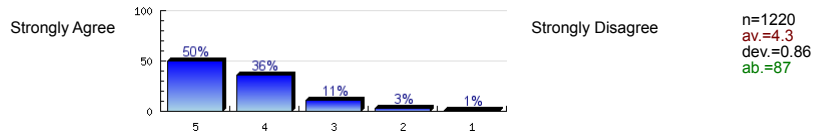
20. I attended class regularly.



21. I read the assignments and was well prepared for every class.

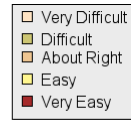
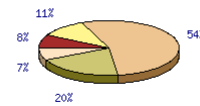


22. I spent a sufficient amount of time on assignments and research papers.



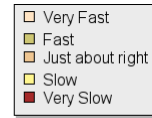
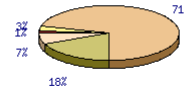
H. Course Difficulty, Work Load, and Pace

23. For my preparation and ability, this course was



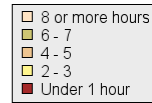
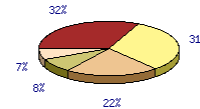
n=1309  
av.=3.08  
dev.=0.95

24. For me, the pace at which the course materials were covered was



n=1307  
av.=3.27  
dev.=0.67

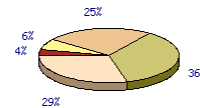
25. In a typical 7-day week, how many hours did you spend preparing for this course (studying, reading, doing homework or other academic activities)?



n=1306  
av.=2.26  
dev.=1.19

I. Overall Evaluation

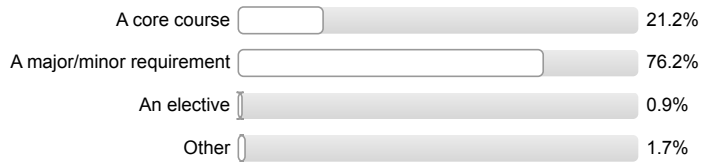
26. Rate the quality of this course as it contributed to your learning:



n=1304  
av.=3.8  
dev.=1.05

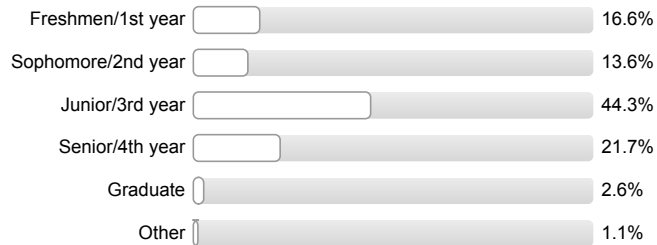
K. Student Information

30. For you, this course is



n=1312

31. Your class level:



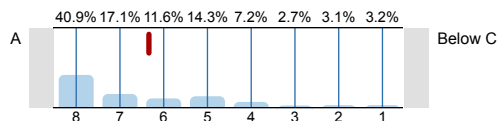
n=1313

32. Your sex:



n=1240

33. What grade do you expect for this course?



n=1290  
av.=6.34  
dev.=1.91

# Profile

Compilation: UG College of Pharmacy (34%)

Values used in the profile line: Mean

## A. Course Organization and Planning

1. The course goals, objectives, and grading procedures were clearly explained.	Strongly Agree		Strongly Disagree	n=1316 av.=4.20 md=4.00 dev.=1.01
2. Lectures and other class activities were well organized.	Strongly Agree		Strongly Disagree	n=1306 av.=4.06 md=4.00 dev.=1.09
3. The instructor was regularly punctual and regularly kept the class for the full class time.	Strongly Agree		Strongly Disagree	n=1305 av.=4.32 md=5.00 dev.=0.93

## B. Communication

4. The instructor's presentations were clear and understandable.	Strongly Agree		Strongly Disagree	n=1307 av.=4.01 md=4.00 dev.=1.11
5. The instructor adequately explained abstract or complex materials so that I understood it.	Strongly Agree		Strongly Disagree	n=1305 av.=3.95 md=4.00 dev.=1.16
6. The instructor conveyed interest and enthusiasm in the subject matter.	Strongly Agree		Strongly Disagree	n=1308 av.=4.18 md=4.00 dev.=1.04

## C. Faculty-Student Interaction

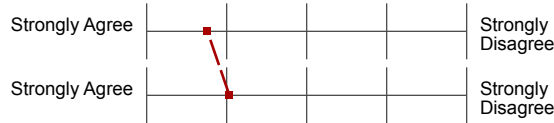
7. The instructor encouraged student discussion and participation.	Strongly Agree		Strongly Disagree	n=1272 av.=4.04 md=4.00 dev.=1.09
8. The instructor satisfactorily answered students' questions.	Strongly Agree		Strongly Disagree	n=1307 av.=4.03 md=4.00 dev.=1.11
9. The instructor was accessible to students during office hours and by email.	Strongly Agree		Strongly Disagree	n=1221 av.=4.13 md=4.00 dev.=1.06

## D. Assignments, Exams, and Grading

10. The instructor asked questions on the course material.	Strongly Agree		Strongly Disagree	n=1261 av.=4.15 md=4.00 dev.=1.02
11. Students were tested on material covered in the course.	Strongly Agree		Strongly Disagree	n=1210 av.=4.14 md=4.00 dev.=1.04
12. The instructor returned students' work in a reasonable amount of time.	Strongly Agree		Strongly Disagree	n=1176 av.=4.14 md=4.00 dev.=1.04
13. The instructor provided sufficient feedback on tests and papers.	Strongly Agree		Strongly Disagree	n=1166 av.=3.96 md=4.00 dev.=1.14
14. Tests, papers, and other assignments were graded fairly.	Strongly Agree		Strongly Disagree	n=1194 av.=4.08 md=4.00 dev.=1.06

### E. Instructional Methods

15. The instructor made appropriate use of technology in teaching.



n=1291 av.=4.24 md=4.00 dev.=0.94

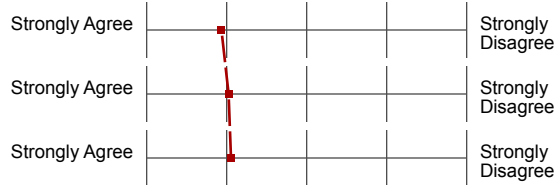
16. Students were actively involved in class discussion, group work, and other classroom activities.



n=1214 av.=3.97 md=4.00 dev.=1.13

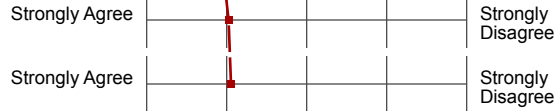
### F. Course Outcomes

17. This course has increased my understanding of the subject matter.



n=1306 av.=4.07 md=4.00 dev.=1.10

18. This course increased my ability to think independently and critically.



n=1272 av.=3.98 md=4.00 dev.=1.11

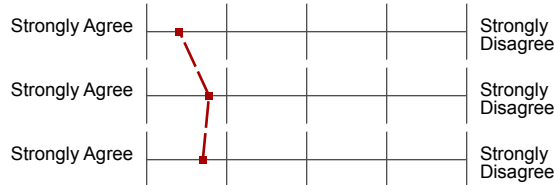
19. I would recommend this instructor to other students.



n=1277 av.=3.95 md=4.00 dev.=1.24

### G. Student Effort and Involvement

20. I attended class regularly.



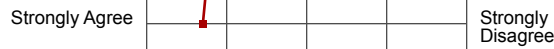
n=1308 av.=4.59 md=5.00 dev.=0.75

21. I read the assignments and was well prepared for every class.



n=1242 av.=4.22 md=4.00 dev.=0.92

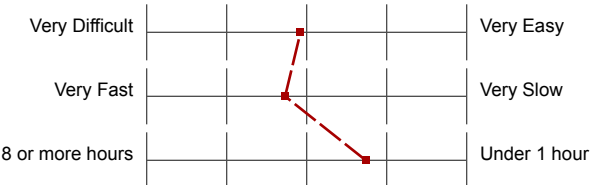
22. I spent a sufficient amount of time on assignments and research papers.



n=1220 av.=4.30 md=4.00 dev.=0.86

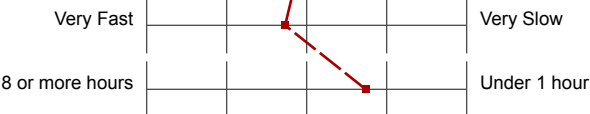
### H. Course Difficulty, Work Load, and Pace

23. For my preparation and ability, this course was



n=1309 av.=3.08 md=3.00 dev.=0.95

24. For me, the pace at which the course materials were covered was



n=1307 av.=3.27 md=3.00 dev.=0.67

25. In a typical 7-day week, how many hours did you spend preparing for this course (studying, reading, doing homework or other academic



n=1306 av.=2.26 md=2.00 dev.=1.19

### I. Overall Evaluation

26. Rate the quality of this course as it contributed to your learning:



n=1304 av.=3.80 md=4.00 dev.=1.05

### K. Student Information

33. What grade do you expect for this course?

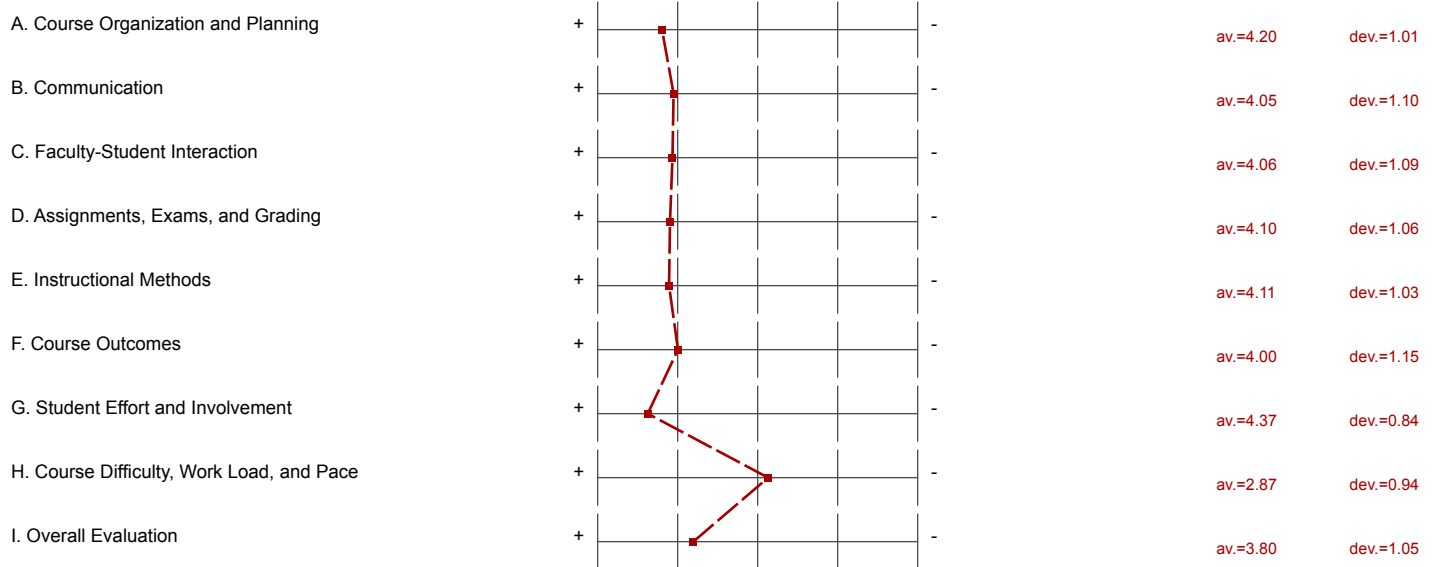


n=1290 av.=6.34 md=7.00 dev.=1.91

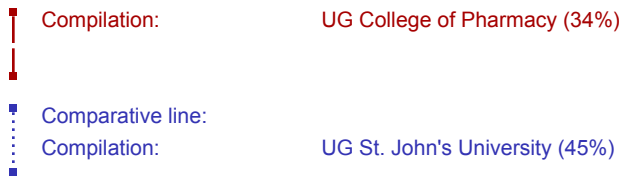


# Profile

Compilation: UG College of Pharmacy (34%)



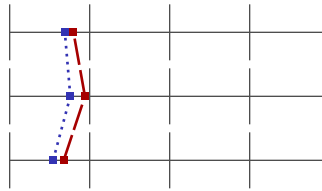
# Profile



Values used in the profile line: Mean

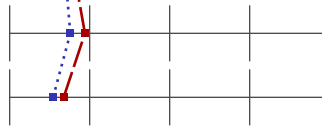
## A. Course Organization and Planning

1. The course goals, objectives, and grading procedures were clearly explained.



n=1316 av.=4.20 md=4.00 dev.=1.01  
n=23088 av.=4.31 md=5.00 dev.=0.95

2. Lectures and other class activities were well organized.



n=1306 av.=4.06 md=4.00 dev.=1.09  
n=23023 av.=4.24 md=5.00 dev.=1.00

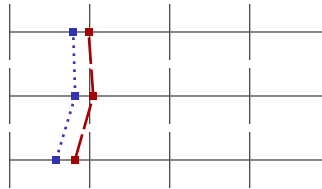
3. The instructor was regularly punctual and regularly kept the class for the full class time.



n=1305 av.=4.32 md=5.00 dev.=0.93  
n=22974 av.=4.46 md=5.00 dev.=0.84

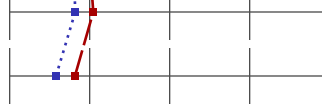
## B. Communication

4. The instructor's presentations were clear and understandable.



n=1307 av.=4.01 md=4.00 dev.=1.11  
n=22971 av.=4.21 md=5.00 dev.=1.05

5. The instructor adequately explained abstract or complex materials so that I understood it.



n=1305 av.=3.95 md=4.00 dev.=1.16  
n=22946 av.=4.18 md=5.00 dev.=1.07

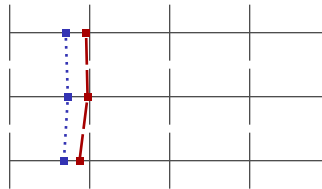
6. The instructor conveyed interest and enthusiasm in the subject matter.



n=1308 av.=4.18 md=4.00 dev.=1.04  
n=22940 av.=4.42 md=5.00 dev.=0.92

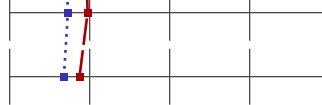
## C. Faculty-Student Interaction

7. The instructor encouraged student discussion and participation.



n=1272 av.=4.04 md=4.00 dev.=1.09  
n=22787 av.=4.30 md=5.00 dev.=1.00

8. The instructor satisfactorily answered students' questions.



n=1307 av.=4.03 md=4.00 dev.=1.11  
n=22977 av.=4.27 md=5.00 dev.=1.01

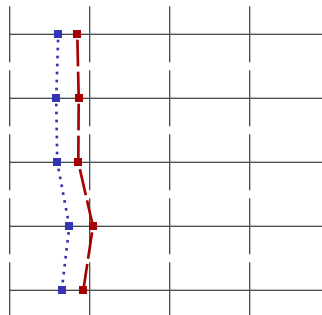
9. The instructor was accessible to students during office hours and by email.



n=1221 av.=4.13 md=4.00 dev.=1.06  
n=21922 av.=4.32 md=5.00 dev.=0.96

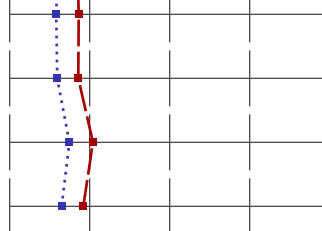
## D. Assignments, Exams, and Grading

10. The instructor asked questions on the course material.



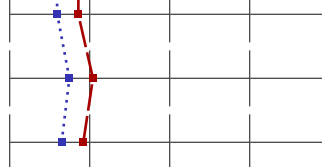
n=1261 av.=4.15 md=4.00 dev.=1.02  
n=22625 av.=4.39 md=5.00 dev.=0.89

11. Students were tested on material covered in the course.



n=1210 av.=4.14 md=4.00 dev.=1.04  
n=22234 av.=4.42 md=5.00 dev.=0.88

12. The instructor returned students' work in a reasonable amount of time.



n=1176 av.=4.14 md=4.00 dev.=1.04  
n=22529 av.=4.41 md=5.00 dev.=0.89

13. The instructor provided sufficient feedback on tests and papers.



n=1166 av.=3.96 md=4.00 dev.=1.14  
n=22447 av.=4.25 md=5.00 dev.=1.03

14. Tests, papers, and other assignments were graded fairly.



n=1194 av.=4.08 md=4.00 dev.=1.06  
n=22601 av.=4.35 md=5.00 dev.=0.95

## E. Instructional Methods

15. The instructor made appropriate use of technology in teaching.



n=1291 av.=4.24 md=4.00 dev.=0.94  
n=21836 av.=4.26 md=5.00 dev.=1.01

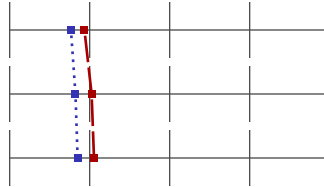
16. Students were actively involved in class discussion, group work, and other classroom activities.



n=1214 av.=3.97 md=4.00 dev.=1.13  
n=22389 av.=4.19 md=5.00 dev.=1.08

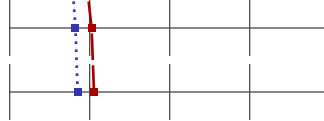
## F. Course Outcomes

17. This course has increased my understanding of the subject matter.



n=1306 av.=4.07 md=4.00 dev.=1.10  
n=22946 av.=4.23 md=5.00 dev.=1.06

18. This course increased my ability to think independently and critically.



n=1272 av.=3.98 md=4.00 dev.=1.11  
n=22706 av.=4.18 md=5.00 dev.=1.07

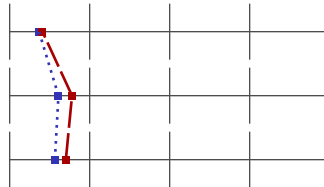
19. I would recommend this instructor to other students.



n=1277 av.=3.95 md=4.00 dev.=1.24  
n=22845 av.=4.15 md=5.00 dev.=1.19

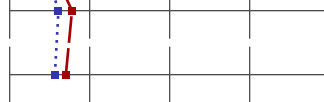
## G. Student Effort and Involvement

20. I attended class regularly.



n=1308 av.=4.59 md=5.00 dev.=0.75  
n=22981 av.=4.63 md=5.00 dev.=0.69

21. I read the assignments and was well prepared for every class.



n=1242 av.=4.22 md=4.00 dev.=0.92  
n=22738 av.=4.39 md=5.00 dev.=0.82

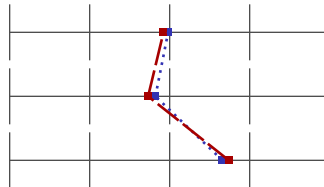
22. I spent a sufficient amount of time on assignments and research papers.



n=1220 av.=4.30 md=4.00 dev.=0.86  
n=22437 av.=4.43 md=5.00 dev.=0.79

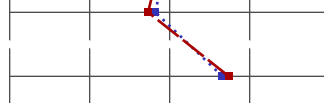
## H. Course Difficulty, Work Load, and Pace

23. For my preparation and ability, this course was



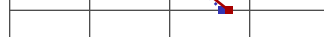
n=1309 av.=3.08 md=3.00 dev.=0.95  
n=23010 av.=3.02 md=3.00 dev.=0.83

24. For me, the pace at which the course materials were covered was



n=1307 av.=3.27 md=3.00 dev.=0.67  
n=22999 av.=3.18 md=3.00 dev.=0.61

25. In a typical 7-day week, how many hours did you spend preparing for this course (studying, reading, doing homework or other academic



n=1306 av.=2.26 md=2.00 dev.=1.19  
n=22975 av.=2.34 md=2.00 dev.=0.97

## I. Overall Evaluation

26. Rate the quality of this course as it contributed to your learning:



n=1304 av.=3.80 md=4.00 dev.=1.05  
n=22933 av.=4.01 md=4.00 dev.=1.04

## K. Student Information

33. What grade do you expect for this course?



n=1290 av.=6.34 md=7.00 dev.=1.91  
n=22898 av.=6.64 md=7.00 dev.=1.60