



Fact Book

Fall 2011

Enrollment Trends

Report by Major 2001-2011

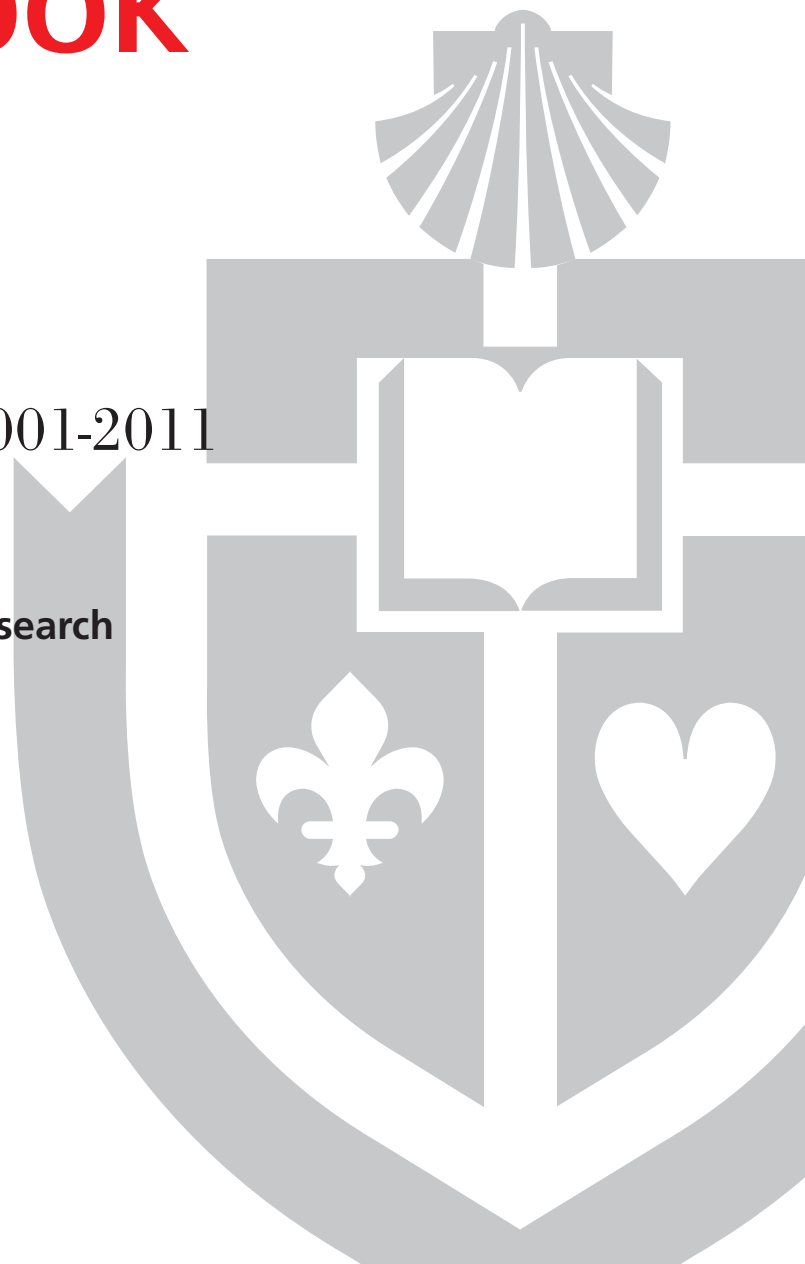
Office of Institutional Research

T (718) 990-1869

F (718) 990-2314

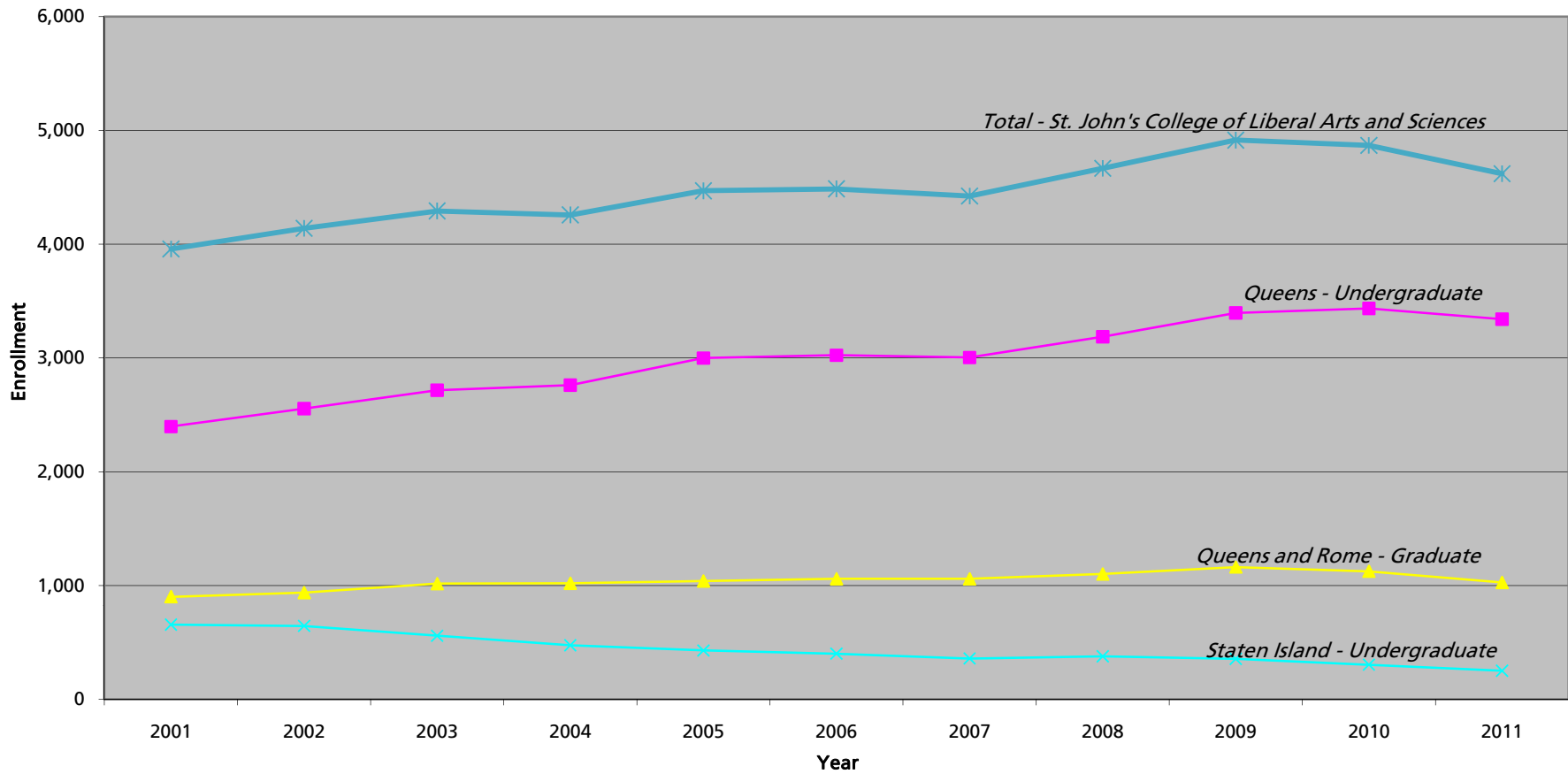
ir@stjohns.edu

www.stjohns.edu/about/ir





St. John's College of Liberal Arts and Sciences Student Enrollment Fall 2001 - Fall 2011





St. John's College of Liberal Arts and Sciences (01)
Student Enrollment - Undergraduate Division
Queens Campus
Fall 2001- Fall 2011

PROGRAM	2001	2002	2003	2004	2005	2006	2007	2008	2009	2010	2011
BIOLOGY COMBINED	410	464	519	514	544	573	550	571	632	668	674
BIO Biology	359	432	485	497	526	569	547	568	631	667	673
BIO1 Biology 7-12 ²	3	1	2	0	2	-	-	-	-	-	-
BIO2 Biology/Dentistry	2	0	1	2	4	3	1	1	0	0	-
BIO3 Biology/Optomety	0	0	0	0	0	0	1	1	1	1	1
BIO5 Biology/Podiatric Medicine	-	-	-	-	-	-	-	1	0	0	0
BIO5 Biology - Self Pace ³	46	31	31	15	12	1	1	-	-	-	-
CHEMISTRY COMBINED	38	59	57	69	80	85	86	84	113	112	112
CHE Chemistry	34	56	56	69	79	85	86	84	113	112	112
CHE1 Chemistry 7-12 ²	1	0	0	0	1	-	-	-	-	-	-
CHES Chemistry - Self Pace ³	3	3	1	-	-	-	-	-	-	-	-
ECONOMICS	22	23	38	42	37	52	57	57	50	47	62
ECO Economics	22	23	38	42	37	52	57	57	50	47	62
ENGLISH COMBINED	144	145	149	162	179	192	187	228	228	229	207
ENG English	117	133	148	160	177	192	187	228	228	229	207
ENG1 English 7-12 ²	27	12	1	2	2	-	-	-	-	-	-
ENVIRONMENTAL STUDIES COMBINED	29	31	24	20	24	18	25	29	48	54	61
ESP Environmental Studies (Ecology)	15	18	12	14	14	9	18	22	27	32	36
ESP2 Environmental Studies (Bio 7-12) ²	4	1	-	-	-	-	-	-	-	-	-
ESP5 Environmental Studies (Social Sci)	8	12	12	6	10	9	7	7	21	22	25
ESPS Environmental Studies - Self Pace ³	2	-	-	-	-	-	-	-	-	-	-
FINE ARTS COMBINED	125	124	112	90	87	88	92	93	98	98	103
FNA Art	19	21	19	19	13	22	23	21	20	11	22
FNA1 Graphic Design	82	80	68	45	44	38	38	43	49	48	44
FNA2 Creative Photography	12	11	14	17	18	14	15	18	19	28	26
FNA4 Illustration	12	12	11	9	12	14	16	11	10	11	11
FRENCH COMBINED	8	6	10	13	17	10	16	21	20	18	20
FRE French	6	6	10	13	17	10	16	21	20	18	20
FRE1 French 7-12 ²	2	-	-	-	-	-	-	-	-	-	-
GOVERNMENT COMBINED	239	246	250	244	250	235	239	237	252	251	225
GOV Government & Politics	231	242	245	242	246	229	235	229	246	243	220
GOV1 Government & Politics Social Studies 7-12 ²	4	1	1	-	-	-	-	-	-	-	-
GOV2 Public Admin & Public Service	3	3	4	2	4	6	4	8	6	8	5
GOV4 Government & Politics/Law	1	0	0	0	0	0	0	0	0	0	-
HISTORY COMBINED	99	107	107	118	104	102	104	133	125	121	115
HIS History	67	90	100	113	102	102	104	133	125	121	115
HIS1 History Social Studies 7-12 ²	32	17	7	5	2	-	-	-	-	-	-

² No longer offered

³ Not a program

Prepared by: Office of Institutional Research (cmg/sp/aj)

Based on data as of 10/17/2011



St. John's College of Liberal Arts and Sciences (01)
Student Enrollment - Undergraduate Division
Queens Campus
Fall 2001- Fall 2011

PROGRAM	2001	2002	2003	2004	2005	2006	2007	2008	2009	2010	2011
ITALIAN COMBINED	9	11	8	10	22	24	29	25	23	15	12
ITA Italian	7	10	8	8	17	24	29	25	23	15	12
ITA1 Italian 7-12 ²	2	1	0	2	5	-	-	-	-	-	-
MATHEMATICS COMBINED	55	43	38	38	39	44	45	36	37	43	49
MTH Mathematics	38	33	36	38	37	44	45	36	37	43	49
MTH1 Mathematics 7-12 ²	17	10	2	0	2	-	-	-	-	-	-
PHILOSOPHY COMBINED	58	53	50	58	74	69	68	74	81	92	109
PHI Philosophy	54	38	36	58	64	61	59	59	73	74	85
PHI1 Philosophy - Theology	1	0	0	0	0	1	6	2	2	9	0
PHI2 Philosophical - Theological Studies	3	15	14	0	10	7	3	13	6	9	24
PHYSICAL SCIENCE COMBINED	16	20	15	14	15	22	30	44	38	43	43
PHY1 Physical Science	12	20	15	14	15	21	13	16	15	17	10
PHY3 Physical Science (Bio Med Engineering)	-	-	-	-	-	1	8	17	15	17	27
PHY4 Physical Science (Pre Engineering)	-	-	-	-	-	-	9	11	8	9	6
PHYX Physical Science - Self Pace ³	4	-	-	-	-	-	-	-	-	-	-
PHYSICS COMBINED	12	14	15	22	22	29	27	27	33	31	35
PHY Physics	11	11	13	18	17	24	23	25	31	28	33
PHY2 Physics 7-12 ²	0	0	0	1	1	-	-	-	-	-	-
PHYS Physics - Self Pace ³	1	1	1	-	-	-	-	-	-	-	-
MTH3 Mathematical Physics	0	2	1	3	4	5	4	2	2	3	2
SOCIOLOGY COMBINED	65	51	58	66	57	62	74	79	85	74	74
SOC Sociology	63	51	58	66	57	62	74	77	80	69	72
SOC1 Sociology Social Studies 7-12 ²	2	-	-	-	-	-	-	-	-	-	-
SOC3 BA/Sociology/MA/Criminology&Just	-	-	-	-	-	-	-	2	5	5	2
SPANISH COMBINED	16	10	20	18	17	24	20	21	25	24	25
SPA Spanish	11	9	18	18	17	24	20	21	25	24	25
SPA1 Spanish 7-12 ²	5	1	2	-	-	-	-	-	-	-	-
OTHER PROGRAMS											
ANT Anthropology	5	7	9	5	6	16	22	20	30	34	43
ASC Asian Studies	2	7	10	13	14	17	14	10	23	23	28
PSY Psychology	468	483	503	500	503	541	513	519	577	603	610
THE Theology	19	22	19	21	22	23	16	18	18	18	11
0000 Undeclared	429	483	553	560	674	602	626	670	668	609	560
NM Non-Matric	37	39	45	38	70	43	46	68	70	108	35
SPE Speech Pathology & Audiology	87	101	103	122	137	147	113	115	112	109	115
SPE1 Speech (Public Add.,Gen.Speech)	5	5	4	4	5	6	5	6	9	12	12
SPE2 Speech	0	1	0	0	0	0	0	1	0	0	0
TOTAL:	2,397	2,555	2,716	2,761	2,999	3,024	3,004	3,186	3,395	3,436	3,340
PERCENT CHANGE:		6.6%	6.3%	1.7%	8.6%	0.8%	-0.7%	6.1%	6.6%	1.2%	-2.8%

² No longer offered

³ Not a program

Prepared by: Office of Institutional Research (cmg/sp/aj)

Based on data as of 10/17/2011



St. John's College of Liberal Arts and Sciences (51)
 Staten Island Campus - Undergraduate
 Fall 2001 - Fall 2011

PROGRAM	2001	2002	2003	2004	2005	2006	2007	2008	2009	2010	2011
CUS Computer Science	104	78	52	25	14	22	16	17	18	19	14
ENGLISH COMBINED	45	42	52	50	43	49	41	32	30	28	19
ENG English	39	40	52	49	43	49	41	32	30	28	19
ENG1 English 7-12 ²	6	2	0	1	-	-	-	-	-	-	-
MATHEMATICS COMBINED	14	11	4	7	6	4	5	4	3	4	2
MTH Mathematics	5	7	4	6	6	4	5	4	3	4	2
MTH1 Mathematics 7-12 ²	9	4	0	1	-	-	-	-	-	-	-
PHILOSOPHY COMBINED	2	4	1	1	2	2	0	1	1	1	1
PHI Philosophy	1	4	1	1	2	2	0	1	1	1	1
PHI1 Philosophy - Theology	1	-	-	-	-	-	-	-	-	-	-
SOCIOLOGY/SOCIAL STUDIES COMBINED	12	10	4	17	19	22	16	23	15	11	6
SOC Sociology	8	7	1	10	9	10	11	10	6	6	3
SST Social Studies	1	2	3	6	9	12	5	13	9	5	3
SST1 Social Studies 7-12 ²	3	1	0	1	1	-	-	-	-	-	-
OTHER PROGRAMS											
ECO Economics	0	0	1	0	0	0	3	2	0	1	0
GOV Government & Politics	23	27	23	20	25	25	21	24	23	20	16
HIS History	10	12	11	12	14	19	23	21	15	16	13
LAS Liberal Arts	162	153	144	130	97	44	17	8	6	6	1
NUR Nursing ^{2,9}	24	41	8	-	-	-	-	-	-	-	-
PSC Political Science ²	6	-	-	-	-	-	-	-	-	-	-
PSY Psychology	73	73	85	75	85	75	79	97	100	86	70
THE Theology	1	1	2	4	3	3	3	4	4	2	1
0000 Undeclared	140	154	135	105	91	78	81	91	76	47	51
NM Non-Matric	0	1	1	0	1	15	2	0	1	1	0
SPE Speech Pathology & Audiology	40	38	36	30	30	44	53	55	64	63	58
SPE2 Speech	2	1	-	-	-	-	-	-	-	-	-
TOTAL	658	646	559	476	430	402	360	379	356	305	252
PERCENTAGE CHANGE		-1.8%	-13.5%	-14.8%	-9.7%	-6.5%	-10.4%	5.3%	-6.1%	-14.3%	-17.4%

² No longer offered

⁹ In affiliation with St. Vincent's Catholic Medical Centers of New York.



St. John's College of Liberal Arts and Sciences (21)
 Student Enrollment - Graduate Division
 Queens Campus
 Fall 2001 - Fall 2011

PROGRAM	2001	2002	2003	2004	2005	2006	2007	2008	2009	2010	2011
ASIAN STUDIES COMBINED	13	15	14	10	13	13	11	11	14	14	12
ASC Asian Studies	-	-	-	1	-	-	-	-	-	-	-
CHS Chinese Studies	6	5	2	1	4	2	1	2	3	2	1
AAS Asian & African Cultural Studies	-	-	-	-	-	-	-	-	1	1	0
EAS East Asian Studies	7	10	12	8	9	11	10	9	10	11	11
AUDIOLOGY & SPEECH COMBINED	127	127	139	164	153	136	158	158	153	152	156
AUD Audiology	-	-	-	-	4	7	12	36	34	33	54
SPE Speech Pathology & Audiology	127	127	139	164	149	129	146	122	119	16	-
SPE5 Speech Pathology	-	-	-	-	-	-	-	-	-	103	102
ECONOMICS	50	48	50	52	46	46	44	40	34	38	36
BIO Biology											
MS	21	16	14	16	10	16	10	10	11	14	12
NM	2	2	1	3	5	1	4	1	1	-	-
Ph.D.	27	30	35	33	31	29	30	29	22	24	24
ENGLISH COMBINED	46	43	42	54	51	60	73	73	80	81	92
ENG English											
MA & NM	23	25	20	27	24	26	35	23	27	27	26
DA	23	18	22	27	27	34	38	50	53	54	66
GOVERNMENT COMBINED	74	62	59	60	69	66	55	53	65	61	53
GOV Government & Politics	73	61	58	59	69	65	55	53	64	60	51
GOV3 Govt & Politics/Library Sci	1	1	1	1	0	1	0	0	1	1	2
HISTORY COMBINED	45	51	51	50	49	52	49	51	47	52	52
HIS History	18	19	19	22	18	25	23	17	15	17	22
HIS2 Modern World History	27	32	32	28	31	27	26	34	32	35	30
LIBRARY SCIENCE COMBINED	74	106	116	94	90	92	105	143	187	136	79
LIS Library Science	73	105	116	93	90	90	104	143	184	134	75
LIS1 Library & Information Studies	1	1	0	1	0	2	1	0	3	2	4
PSYCHOLOGY COMBINED	255	255	261	274	291	263	254	260	269	252	229
PSY1 Gen-Exper Psychology	12	19	21	26	26	21	17	15	19	23	17
PSY2 Clinical Psy-General Track	51	47	45	40	37	34	35	35	35	38	36
PSY3 Clinical Psy-Clin Child Track	50	47	46	39	39	35	29	32	32	28	30
PSY5 School Psychology	40	26	29	45	54	44	51	52	64	60	47
PSY5 School Psychology Psy.D	82	90	90	94	101	99	94	90	86	60	54
PSY6 School Psychology/Bilingual Ext	9	7	5	7	9	8	9	11	9	5	6
PSY6 School Psychology/Bilingual Ext Psy.D	11	19	25	23	25	22	19	25	24	38	39
THEOLOGY COMBINED	55	56	59	68	64	55	51	40	38	37	45
THE Theology	50	52	55	66	62	50	49	39	38	37	44
THE2 Theo Catechetical Ministry	5	4	4	2	2	5	2	1	0	0	1

Note: Queens figures include Distance Learning and Oakdale Students. Please refer to the Distance Learning and Oakdale Enrollment Reports.



**St. John's College of Liberal Arts and Sciences (21)
Student Enrollment - Graduate Division
Queens Campus
Fall 2001 - Fall 2011**

PROGRAM		2001	2002	2003	2004	2005	2006	2007	2008	2009	2010	2011
OTHER PROGRAMS												
CHE	Chemistry	15	19	17	23	33	35	27	21	24	28	21
CRIM	Criminology and Justice	-	13	29	33	37	38	39	30	29	39	54
GDSJ	Global Dev & Social Justice	-	-	-	-	-	-	-	-	32	36	38
LAC	Latin American and Caribbean Studies	0	1	1	2	3	2	0	3	0	0	1
LST	Liberal Studies	20	13	15	15	12	31	60	55	24	14	12
MTH	Mathematics	7	6	8	7	10	15	12	8	5	7	8
MIN	Ministerial Studies	8	7	7	4	4	5	4	4	2	2	2
PAS	Pastoral Ministry	1	-	-	-	-	-	-	-	-	-	-
SOC	Sociology	23	25	17	22	21	33	38	29	35	31	31
SPA	Spanish	14	15	14	22	21	19	16	9	9	15	19
0000	Undeclared	-	-	-	1	-	-	-	-	-	-	-
NM	Non-Matric	37	30	60	9	6	34	20	67	71	84	50
TOTAL QUEENS:		864	892	959	964	973	995	1,016	1,055	1,118	1,079	990
PERCENT CHANGE:			3.2%	7.5%	0.5%	0.9%	2.3%	2.1%	3.8%	6.0%	-3.5%	-8.2%

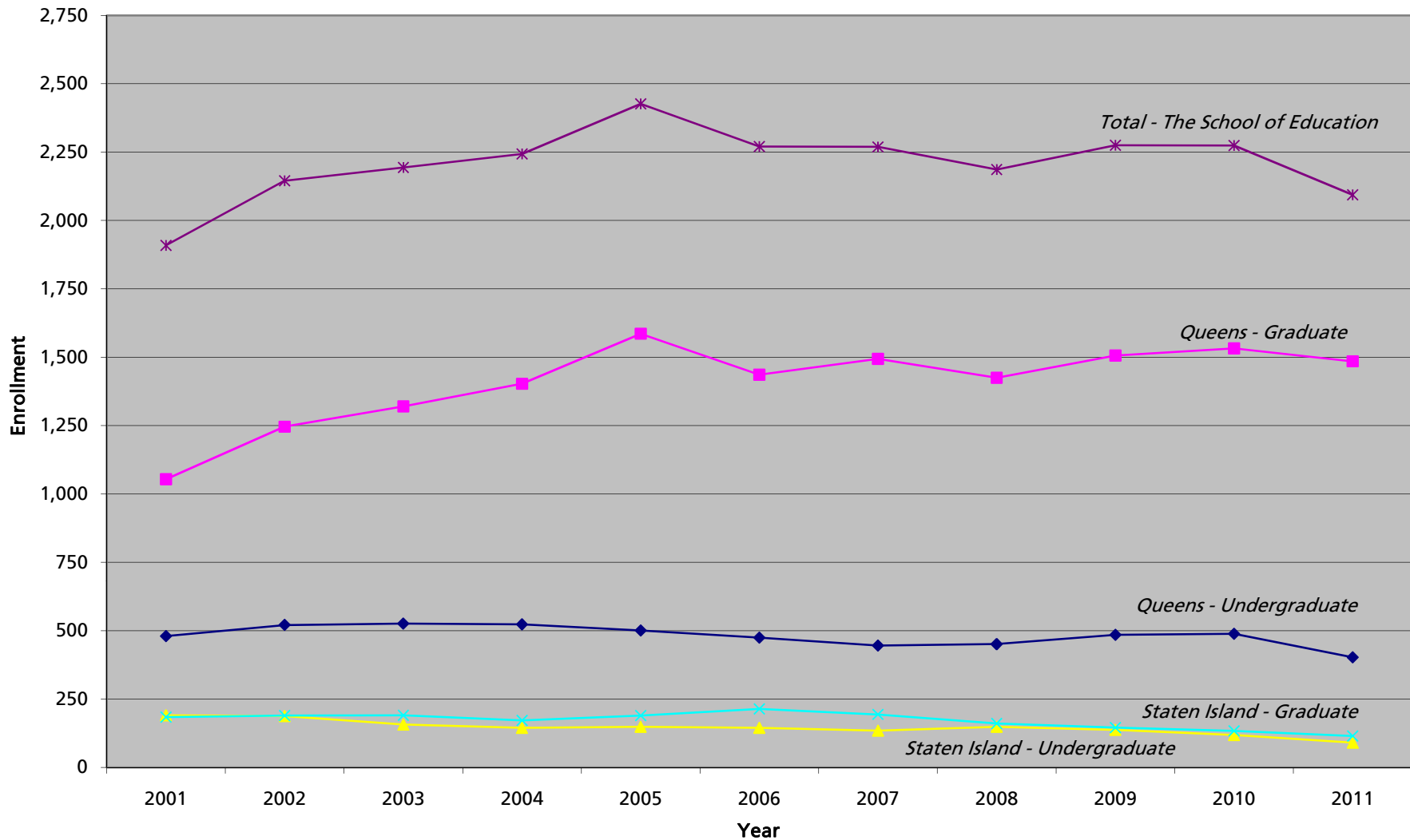
Rome Campus

PROGRAM		2001	2002	2003	2004	2005	2006	2007	2008	2009	2010	2011
GOV	Government & Politics	37	46	56	55	66	64	43	46	45	47	37
NM	Non-Matric	1	-	2	1	1	1	0	1	0	-	-
TOTAL ROME:		38	46	58	56	67	65	43	47	45	47	37
PERCENT CHANGE:			21.1%	26.1%	-3.4%	19.6%	-3.0%	-33.8%	9.3%	-4.3%	4.4%	-21.3%
QUEENS & ROME TOTAL:		902	938	1,017	1,020	1,040	1,060	1,059	1,102	1,163	1,126	1,027
PERCENT CHANGE:			4.0%	8.4%	0.3%	2.0%	1.9%	-0.1%	4.1%	5.5%	-3.2%	-8.8%

Notes: Queens figures include Distance Learning and Oakdale Students. Please refer to the Distance Learning and Oakdale Enrollment Reports.



The School of Education Student Enrollment Fall 2001 - Fall 2011





The School of Education - (12)
Student Enrollment - Undergraduate Division
Queens Campus
Fall 2001 - Fall 2011

PROGRAM	2001	2002	2003	2004	2005	2006	2007	2008	2009	2010	2011
EDUCATION PRE K-6/CHILDHOOD COMBINED	414	414	384	363	346	318	278	272	289	289	235
EDU Elementary Edu Grades Pre K-6 ²	296	196	72	-	-	-	-	-	-	-	-
EDU2 Elem Ed Pre K-6 & Sp Ed K-6 ²	25	17	5	-	-	-	-	-	-	-	-
EDUD Elem Ed/Spec Ed (PreK-6): Dual Cert. ²	1	1	1	-	-	-	-	-	-	-	-
CED Childhood Education 1-6	82	182	275	321	309	283	234	198	208	206	161
CEDS Childhood Edu & Special Edu 1-6	10	18	31	41	35	35	44	74	81	83	74
CHD Childhood Edu - Non Cert	-	-	-	1	2	-	-	-	-	-	-
EDU PRE K-6 & 7-9/ ADOLESCENCE COMBINED	57	106	139	159	155	157	168	179	196	200	167
EDUE Elem Ed Pre K-6 & 7-9 English ²	7	4	1	-	-	-	-	-	-	-	-
EDUG Elem Ed Pre K-6 & 7-9 Gen Sci ²	2	1	1	-	-	-	-	-	-	-	-
EDUH Elem Ed Pre K-6 & 7-9 S.S. ²	6	2	1	-	-	-	-	-	-	-	-
EDUI Elem Ed Pre K-6 & 7-9 Italian ²	1	0	0	-	-	-	-	-	-	-	-
EDUM Elem Ed Pre K-6 & 7-9 Math ²	5	3	1	-	-	-	-	-	-	-	-
EDUS Elem Ed Pre K-6 & 7-9 Span ²	3	1	1	-	-	-	-	-	-	-	-
AEB Adolescence Edu/Biology	-	-	-	-	-	4	10	14	21	18	15
AEE Adolescence Edu/English	4	22	42	45	46	45	44	42	47	57	44
AEM Adolescence Edu/Mathematics	13	24	31	47	48	44	39	41	45	42	39
AEP Adolescence Edu/Physics	0	5	8	9	7	8	5	8	4	8	6
AESP Adolescence Edu/Spanish	2	8	7	8	9	8	12	17	14	13	8
AESS Adolescence Edu/Social Studies	14	36	46	50	45	48	58	56	65	62	55
OTHER PROGRAMS											
EDU5 Teach Of Spe&Hear Handspe Path ²	3	-	-	-	-	-	-	-	-	-	-
EDU3 Art Education K-12 ²	6	1	2	-	-	-	-	-	-	-	-
0000 Undeclared	-	-	-	1	-	-	-	-	-	-	-
NM Non-Matric	-	-	1	-	-	-	-	-	-	-	1
TOTAL:	480	521	526	523	501	475	446	451	485	489	403
PERCENT CHANGE:		8.5%	1.0%	-0.6%	-4.2%	-5.2%	-6.1%	1.1%	7.5%	0.8%	-17.6%

*Note: Beginning in Fall 2001, students majoring in Elementary Education Pre K-6 are coded as Childhood Education majors.
 Students majoring in Elementary Education Pre K-6 and 7-9 are coded as Adolescence Education majors.*

² No longer offered

³ Now in the College of Professional Studies

Prepared by: Office of Institutional Research (cmg/sp/aj)



The School of Education (62)
 Staten Island Campus
 Fall 2001- Fall 2011

PROGRAM	2001	2002	2003	2004	2005	2006	2007	2008	2009	2010	2011
ADOLESCENCE COMBINED	9	24	33	30	31	34	31	33	35	26	21
AEE Adolescence Edu/English	3	9	16	9	6	11	10	16	16	11	8
AEM Adolescence Edu/Mathematics	3	5	8	10	9	11	9	8	9	10	9
AESS Adolescence Edu/Social Studies	3	10	9	11	16	11	12	9	10	5	4
ADE Adolescence Ed - Non Cert.	-	-	-	-	-	1	-	-	-	-	-
EDUCATION PRE K-6/CHILDHOOD COMBINED	182	164	124	115	118	111	104	116	103	93	70
EDU Elementary Edu Grades Pre K-6 ^{2,10}	89	54	5	-	-	-	-	-	-	-	-
EDUD Elem Ed & Special Ed K-6 ^{2,10}	28	15	-	-	-	-	-	-	-	-	-
CED Childhood Education 1-6	61	89	107	101	96	95	89	102	91	79	60
CEDS Childhood Edu & Spec Edu 1-6	4	6	12	13	20	16	13	14	12	14	10
CHD Childhood Edu - Non Cert	-	-	-	1	2	-	2	-	-	-	-
SUBTOTAL	191	188	157	145	149	145	135	149	138	119	91
PERCENTAGE CHANGE		-1.6%	-16.5%	-7.6%	2.8%	-2.7%	-6.9%	10.4%	-7.4%	-13.8%	-23.5%

² No longer offered

¹⁰ Beginning in Fall 2001, entering students majoring in Elementary Education Pre K-6 are coded as Childhood Education majors.



**The School of Education (32)
Student Enrollment - Graduate Division
Queens Campus
Fall 2001 - Fall 2011**

PROGRAM	2001	2002	2003	2004	2005	2006	2007	2008	2009	2010	2011
CHILDHOOD/ELEM. EDUCATION COMBINED	273	319	349	270	219	184	132	153	178	117	70
EDU Elementary Education Pre K-6 ²	273	237	148	98	94	65	16	35	1	1	-
CEC Childhood Education: Career	-	26	84	118	115	112	109	110	119	108	56
CED Childhood Education 1-6	-	-	-	-	-	-	1	4	56	8	9
CEF Childhood Education: Field	-	6	13	9	10	7	6	4	2	0	3
CHL Childhood Education Teaching Fellow	-	50	104	45	-	-	-	-	-	-	-
CHD Childhood Edu - Non Cert	-	-	-	-	-	-	-	-	-	-	2
EARLY CHILDHOOD ED. COMBINED	-	15	46	67	68	62	49	40	41	26	17
ECC Early Childhood Edu: Career	-	8	28	48	55	48	39	32	29	18	15
ECF Early Childhood Edu: Field	-	7	18	19	13	14	10	8	12	8	2
ED ADMIN COMBINED	222	230	270	346	529	509	399	369	351	386	387
EDAS Edu Admin & Supervsn (EDD,PD,ADVCRT)	91	127	163	209	181	152	129	95	95	91	86
EDAS Ed Admin & Supervision (MSED, NM)	64	29	28	50	47	2	1	-	-	-	-
SBL School Building Leadership	-	-	-	-	206	258	185	147	112	108	112
SBDL School Building/School District Leadership	-	-	-	-	-	-	-	40	38	44	44
SDL School District Leadership	-	-	-	-	1	2	1	5	4	9	8
ADS Administrative Studies	-	-	-	-	-	-	-	-	-	1	-
EDGT Gifted Education	-	-	-	-	-	-	-	-	8	8	10
INL Instructional Leadership (EDD,ADVCRT)	67	74	79	87	94	95	83	82	94	125	127
READING/LITERACY COMBINED	197	173	143	108	88	74	54	68	75	106	109
EDU4 Reading/Special Education ²	18	10	1	-	-	-	-	-	-	-	-
RDS Reading Specialist ²	179	133	64	0	2	-	-	-	-	-	-
LTC Teaching Literacy B-12	-	-	-	-	-	-	4	3	3	3	4
LTC1 Literacy (Ph.D.)	-	-	-	-	-	-	-	14	10	22	19
LTCB Literacy Birth-6	-	25	74	101	75	63	44	43	45	41	36
LTCB5 Literacy 5-12	-	5	-	-	-	-	-	-	-	-	-
LTC2 Teaching Literacy Grades 5-12	-	-	-	-	-	-	-	-	-	2	1
LTC3 Teaching Literacy Birth-6	-	-	-	-	-	-	-	-	5	4	9
LTC4 Teach Lit B-6 & Tch Child w/Dis	-	-	-	-	-	-	-	-	5	17	23
LTC5 Literacy 5-12	-	-	4	7	11	11	6	8	7	11	10
LTC6 Teach Lit 5-12 & TESOL K-12	-	-	-	-	-	-	-	-	-	-	1
LTC7 Teach Lit B-6 & TESOL K-12	-	-	-	-	-	-	-	-	-	6	6
COUNSELOR COMBINED	149	180	173	141	127	91	95	105	137	151	148
EDU8 School Counselor with Bili Ext	29	27	22	17	22	15	19	14	17	19	19
SHC School Counselor	72	97	94	77	68	60	70	76	86	83	70
EDU6 Student Dev Prac Higher ED ²	39	40	42	25	18	6	1	-	-	-	-
CMHC Clinical Mental Health Counseling ¹¹	9	16	15	22	19	10	5	15	34	49	58
MHC Mental Health Counseling	-	-	-	-	-	-	-	-	-	-	1



The School of Education (32)
 Student Enrollment - Graduate Division
 Queens Campus
 Fall 2001 - Fall 2011

PROGRAM	2001	2002	2003	2004	2005	2006	2007	2008	2009	2010	2011
SECONDARY/ADOLESCENCE EDUCATION COMB.	103	162	238	311	309	309	312	290	275	255	263
BIO Biology ²	10	30	5	5	-	-	-	-	-	-	-
AEB Adolescence Edu/Biology	-	-	-	-	1	1	0	0	1	2	1
ENG1 English 7-12 ²	21	29	8	1	-	-	-	-	-	-	-
AEE Adolescence Edu/English	-	-	-	1	7	6	8	5	9	6	5
MTH1 Mathematics 7-12 ²	23	20	10	3	1	-	-	-	-	-	-
AEM Adolescence Edu/Mathematics	-	-	-	-	6	3	1	1	3	5	3
SPA1 Spanish 7-12 ²	9	4	4	1	-	-	-	-	-	-	-
AESP Adolescence Edu/Spanish	-	-	-	-	2	1	1	1	2	2	-
SST1 Social Studies 7-12 ²	34	30	10	7	1	-	-	-	-	-	-
AESS Adolescence Edu/Social Studies	-	-	-	6	7	5	7	3	4	4	4
CHE1 Chemistry 7-12 ²	4	3	1	-	-	-	-	-	-	-	-
FRE1 French 7-12 ²	1	-	-	-	-	-	-	-	-	-	-
ADE Adolescence Edu - Non Cert.	-	-	-	-	-	-	-	-	-	-	1
PHY2 Physics Education 7-12 ²	1	1	-	-	-	-	-	-	-	-	-
AEC Adolescence Education: Career	-	19	93	155	146	135	132	132	165	162	158
AEET Adolescence Edu: Eng 7-12 (TF)	-	-	-	-	-	20	48	38	14	-	-
AEF Adolescence Education: Field	-	5	27	23	17	10	9	5	2	2	-
AMC Alt. Cert.-Adol Math 7-12 (TF)	-	-	-	106	44	128	51	105	75	28	-
AMSP Adolescent Math Special Edu	-	-	-	-	-	-	-	-	-	37	88
MDM Alter Cert.Child Ed MID Math	-	21	80	3	77	-	55	-	-	-	-
MCE5 Middle Childhood 5-6 Extension	-	-	-	-	-	-	-	-	-	4	-
MCE7 Middle Childhood 7-9 Extension	-	-	-	-	-	-	-	-	-	3	3
SPECIAL EDUCATION COMBINED	60	63	57	82	87	70	95	119	152	174	182
EDSP Special Education ²	41	33	17	1	-	-	-	-	-	-	-
EDU7 Special Ed With Bilingual Ext ²	19	14	3	0	0	0	3	-	-	-	-
TCD Teach Child with DIS Childhood	-	16	18	33	45	41	28	33	29	27	35
TFD Teach Fellow: Child Disabilities	-	-	19	45	28	1	1	-	-	-	-
CSPE Childhood & Childhood Spec Edu	-	-	-	3	14	28	63	86	123	129	108
CHDS Child Edu/ Spec Edu-Non Cert	-	-	-	-	-	-	-	-	-	-	1
ECTD Early Child B-2 & Teac Dis B-2	-	-	-	-	-	-	-	-	-	18	35
ECDF Early Child/Dis B-2: Field Chg	-	-	-	-	-	-	-	-	-	-	3
BILINGUAL EDUCATION COMBINED	14	21	4	12	13	19	22	4	47	61	57
BIL Bilingual Extension	-	-	-	-	-	-	-	1	3	7	11
BIL1 Bilingual Ed: ITI	-	-	-	-	-	-	-	-	34	47	32
BIL2 Bilingual Special Ed: ITI	-	-	-	-	-	-	-	-	6	7	14
BIL3 Bilingual Pupil Person Ser: ITI	-	-	-	-	-	-	-	-	1	-	-
EDU9 Bilingual/Multicultural Edu	14	21	4	12	13	19	22	3	3	-	-
TESOL COMBINED	33	81	36	66	142	108	111	111	158	176	199
TES Tesol	33	81	36	62	133	93	82	75	100	103	101
TES1 TESOL: ITI	-	-	-	-	-	-	-	-	12	22	30
TES2 TESOL Special Ed: IT	-	-	-	-	-	-	-	-	-	4	19
TES3 TESOL K-12	-	-	-	-	-	-	-	-	-	-	8
CTES Childhood Education & TESOL	-	-	-	4	9	15	29	36	46	47	41
NM Non-Matric	3	2	4	0	4	10	225	166	92	80	53
TOTAL:	1,054	1,246	1,320	1,403	1,586	1,436	1,494	1,425	1,506	1,532	1,485
PERCENT CHANGE:		18.2%	5.9%	6.3%	13.0%	-9.5%	4.0%	-4.6%	5.7%	1.7%	-3.1%

² No longer offered

¹¹ Previously known as Mental Health Counseling & Rehabilitation Counseling

Note: Figures include Distance Learning and Oakdale Students. Please refer to the Distance Learning and Oakdale Enrollment Reports.



The School of Education (82)
 Student Enrollment - Graduate Division
 Staten Island Campus
 Fall 2001 - Fall 2011

PROGRAM	2001	2002	2003	2004	2005	2006	2007	2008	2009	2010	2011
CHILDHOOD/ELEMENTARY EDUCATION COMBINED	26	42	65	58	59	49	41	43	43	41	24
EDU Elementary Education Pre K-6 ²	26	11	10	5	6	5	6	-	-	-	-
CEC Childhood Education: Career	-	13	54	50	51	44	35	38	36	33	18
CED Childhood Education 1-6	-	18	0	0	2	0	0	4	5	6	4
CEF Childhood Education: Field	-	-	1	3	0	0	0	1	1	2	2
CHD Childhood Edu - Non Cert	-	-	-	-	-	-	-	-	1	-	-
ED ADMIN & SUPERVISION COMBINED	49	42	29	33	57	93	74	45	24	24	16
EDAS Educational Admin & Supervsn (PD/ADVCRT) ²	24	19	24	20	10	5	1	-	-	-	-
EDAS Educational Admin & Supervsn (MSED,NM) ²	9	12	5	13	13	1	-	-	-	-	-
SBDL Sch Building/Sch Distr Leaders	-	-	-	-	-	-	-	-	-	2	2
SBL School Building Leadership	-	-	-	-	34	87	73	45	24	21	14
SDL School District Leadership	-	-	-	-	-	-	-	-	-	1	-
INL Instructional Leadership	16	11	-	-	-	-	-	-	-	-	-
READING LITERACY COMBINED	50	55	57	42	33	28	29	26	12	13	9
RDS Reading Specialist ²	46	30	11	1	-	-	-	-	-	-	-
EDU4 Reading/Special Education ²	4	-	-	-	-	-	-	-	-	-	-
LTC Teaching Literacy B-12	-	-	-	-	-	-	-	-	3	4	2
LTCB Literacy Birth-6	-	23	40	37	30	27	28	25	9	8	3
LTC4 Teach Lit B-6 & Tch Child w/ Dis	-	-	-	-	-	-	-	-	-	-	2
LTC5 Literacy 5-12	-	2	6	4	3	1	1	1	-	1	-
LTC6 Teach Lit 5-12 & TESOL K-12	-	-	-	-	-	-	-	-	-	-	2
MIDDLE CHILDHOOD ED. COMBINED	-	-	-	-	-	-	-	-	-	1	1
MCE5 Middle Childhood 5-6 Extension	-	-	-	-	-	-	-	-	-	1	-
MCE7 Middle Childhood 7-9 Extension	-	-	-	-	-	-	-	-	-	-	1
SPECIAL EDUCATION COMBINED	11	8	0	2	4	4	6	6	21	16	30
CHDS Child Edu/Spec Edu - Non Cert	-	-	-	-	-	-	-	-	-	1	1
CSPE Childhood & Childhood Spec Edu	-	-	-	2	4	4	6	6	17	14	20
EDSP Special Education ²	11	8	-	-	-	-	-	-	-	-	-
TCD Teach Child with DIS Childhood	-	-	-	-	-	-	-	-	4	1	9
COUNSELOR COMBINED	45	43	39	36	35	32	28	33	43	35	32
CMHC Clinical Mental Health Counseling Education ¹¹	14	11	6	6	5	4	1	1	9	10	16
SHC School Counselor	31	32	33	30	30	28	27	32	34	25	16
0000 Undeclared	3	-	1	1	2	8	-	2	-	-	-
NM Non-Matric	-	-	-	-	-	-	16	6	3	4	3
TOTAL:	184	190	191	172	190	214	194	161	146	134	115
PERCENT CHANGE:		3.3%	0.5%	-9.9%	10.5%	12.6%	-9.3%	-17.0%	-9.3%	-8.2%	-14.2%

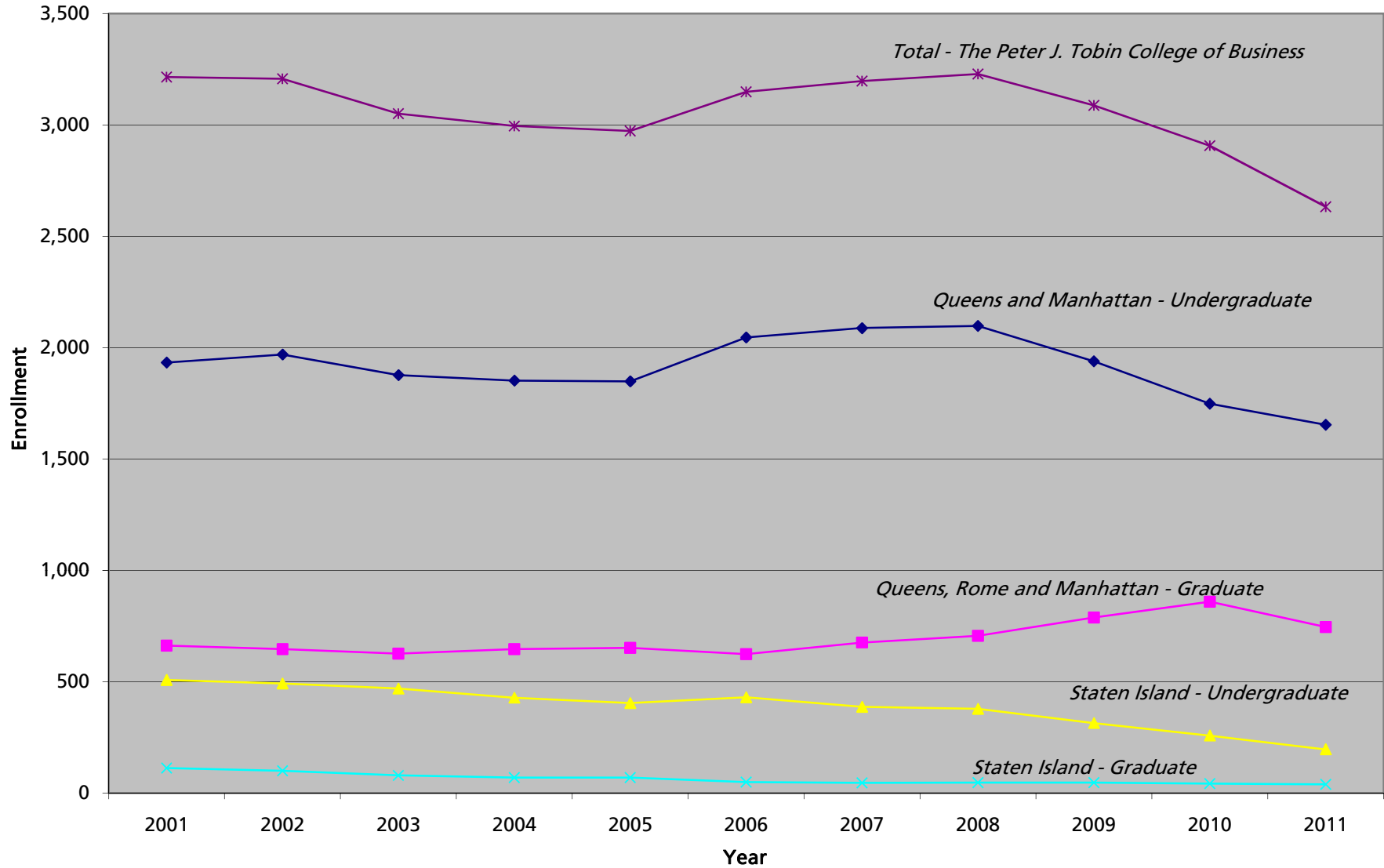
² No longer offered

¹¹ Previously known as Mental Health Counseling & Rehabilitation Counseling

Note: Figures include Distance Learning Students. Please refer to the Distance Learning Enrollment Reports.



The Peter J. Tobin College of Business
 Student Enrollment
 Fall 2001 - Fall 2011





The Peter J. Tobin College of Business (14)
 Student Enrollment - Undergraduate Division
 Fall 2001 - Fall 2011

Queens Campus											
PROGRAM	2001	2002	2003	2004	2005	2006	2007	2008	2009	2010	2011
ACCOUNTING COMBINED	359	387	384	403	435	488	474	487	499	467	455
ACC Accounting (BS)	331	387	338	365	404	406	421	396	370	368	390
ACC2 Accounting (BS/MS)	28	0	22	11	19	39	39	43	45	53	27
ACC3 BS/Accounting MS/Tax	-	-	24	27	12	43	14	41	65	32	22
ACCF Accounting/Finance	-	-	-	-	-	-	-	5	16	14	16
ACCM Accounting/Managmnt Info System	-	-	-	-	-	-	-	2	3	-	-
OTHER PROGRAMS											
ECO Economics	47	33	37	35	38	39	48	63	74	80	86
FIN Finance	535	525	445	426	400	443	515	560	436	322	296
MGT Management	317	338	352	361	383	410	390	324	307	294	307
MIS Management Information Systems	0	1	3	9	10	15	17	16	16	14	11
MKT Marketing	276	290	281	310	280	269	265	266	252	215	208
MSC Military Science ⁴	37	29	16	17	23	28	28	16	26	20	28
0000 Undeclared	247	265	276	186	141	197	179	178	133	144	85
NM Non-Matric	4	2	2	3	1	1	0	1	0	2	2
TOTAL:	1,822	1,870	1,796	1,750	1,711	1,890	1,916	1,911	1,743	1,558	1,478
PERCENT CHANGE:		2.6%	-4.0%	-2.6%	-2.2%	10.5%	1.4%	-0.3%	-8.8%	-10.6%	-5.1%
Manhattan Campus											
PROGRAM	2001	2002	2003	2004	2005	2006	2007	2008	2009	2010	2011
ACT Actuarial Science	28	33	42	61	79	101	101	109	110	87	78
RMI Risk Management and Insurance	70	65	39	41	58	55	71	78	86	103	97
0000 Undeclared	12	1	-	-	-	-	-	-	-	-	-
NM Non-Matric	1	-	-	-	-	-	-	-	-	-	-
TOTAL:	111	99	81	102	137	156	172	187	196	190	175
		-10.8%	-18.2%	25.9%	34.3%	13.9%	10.3%	8.7%	4.8%	-3.1%	-7.9%
QUEENS & MANHATTAN TOTAL:	1,933	1,969	1,877	1,852	1,848	2,046	2,088	2,098	1,939	1,748	1,653
PERCENT CHANGE:		1.9%	-4.7%	-1.3%	-0.2%	10.7%	2.1%	0.5%	-7.6%	-9.9%	-5.4%

⁴ Students cross-enrolled at other institutions
 Prepared by: Office of Institutional Research (cmg/sp/aj)

Based on data as of 10/17/2011



The Peter J. Tobin College of Business (64)
 Student Enrollment - Undergraduate Division
 Staten Island Campus
 Fall 2001 - Fall 2011

PROGRAM	2001	2002	2003	2004	2005	2006	2007	2008	2009	2010	2011
ACCOUNTING COMBINED	125	119	112	115	106	125	123	130	131	104	87
ACC Accounting	106	98	106	109	104	117	112	119	117	88	78
ACC2 Accounting (BS/MS)	19	21	6	6	2	8	11	11	14	16	9
OTHER PROGRAMS											
ECO Economics ²	1	1	-	-	-	-	-	-	-	-	-
FIN Finance	129	136	112	76	72	81	99	124	83	57	31
MGT Management	87	83	89	86	94	87	71	48	43	42	30
MKT Marketing	49	51	54	46	50	59	40	37	31	28	22
MSC Military Science ⁴	-	-	-	-	-	-	-	-	-	-	1
0000 Undeclared	117	102	102	105	81	78	54	39	26	27	25
TOTAL:	508	492	469	428	404	430	387	378	314	258	196
PERCENT CHANGE:		-3.1%	-4.7%	-8.7%	-5.6%	6.4%	-10.0%	-2.3%	-16.9%	-17.8%	-24.0%

² No longer offered



The Peter J. Tobin College of Business (34)
 Student Enrollment - Graduate Division
 Queens, Rome, and Manhattan
 Fall 2001 - Fall 2011

Queens Campus											
PROGRAM	2001	2002	2003	2004	2005	2006	2007	2008	2009	2010	2011
Master in Business Administration (MBA)	488	470	456	433	411	352	311	312	335	322	278
<i>BUS Business Administration</i>	-	-	-	-	-	80	192	243	268	274	239
Computer Info Systems / Decision Science	-	-	-	-	-	3	6	8	8	10	12
Controllership	-	-	-	-	-	-	2	1	1	3	4
Decision Sciences	-	-	-	-	-	-	5	3	3	3	2
Finance	-	-	-	-	-	29	76	106	100	89	88
International Business	-	-	-	-	-	13	23	27	37	57	33
Executive Management	-	-	-	-	-	11	24	39	43	32	34
Marketing	-	-	-	-	-	24	55	57	74	79	64
Taxation	-	-	-	-	-	-	1	2	2	1	2
ACC Accounting	0	0	1	-	-	-	-	-	-	-	-
ACC1 Public Accounting	41	37	66	75	74	59	36	43	54	45	39
ACC2 Accounting BS/MS	-	1	-	-	-	-	-	-	-	-	-
CIS Computer Info Sys/Decision Sci ⁵	70	33	26	27	25	13	4	-	-	-	-
CON Controllership	0	0	0	0	1	1	-	-	-	-	-
ECO Economics	1	1	-	-	-	-	-	-	-	-	-
FIN Finance	194	209	184	164	137	78	36	10	7	2	-
INTB International Business	18	31	29	24	23	18	5	1	-	-	-
MGT1 Executive Management	81	75	77	65	53	34	20	8	3	-	-
MKT Marketing	78	74	68	75	93	67	16	7	3	1	-
TAX Taxation	5	9	5	3	5	2	2	-	-	-	-
Master in Science (MS)	39	50	60	75	86	83	137	154	207	261	219
ACC Accounting	-	-	19	22	33	38	52	75	123	169	145
ACC1 Public Accounting	-	8	1	-	-	-	-	-	-	-	-
ACC2 Accounting BS/MS	23	18	6	9	7	12	26	25	32	25	32
FAP Forecasting and Planning	2	1	0	0	0	0	0	0	0	0	0
TAX Taxation	14	23	34	44	46	33	59	54	52	67	42
Advanced Certificate (APCRT/ADVCR)	9	8	8	11	4	4	1	2	3	2	3
ACC1 Public Accounting	4	4	5	7	2	2	1	1	1	0	1
CIS Computer Info Sys/Decision Sci ⁵	0	2	1	-	-	-	-	-	-	-	-
CON Controllership	-	-	-	-	-	1	0	0	0	0	0
FIN Finance	2	1	0	2	1	0	0	0	1	2	2
INTB International Business	-	-	-	-	-	-	-	1	-	-	-
MGT1 Executive Management	2	1	0	0	0	0	0	0	0	0	0
MKT Marketing	1	0	1	1	-	-	-	-	-	-	-
TAX Taxation	0	0	1	1	1	1	0	0	1	0	0
NM Non-Matric	1	4	2	0	1	1	1	0	0	0	0
TOTAL QUEENS:	537	532	526	520	502	440	450	468	545	585	500
PERCENT CHANGE:		-0.9%	-1.1%	-1.1%	-3.5%	-12.4%	2.3%	4.0%	16.5%	7.3%	-14.5%

Note: Beginning in fall 2006, New MBA graduate students are coded as Business Administration (BUS) with a specific concentration.

⁵ Formerly Quantitative Analysis

⁶ Formerly Risk Management and Insurance

Prepared by: Office of Institutional Research (cmg/sp/aj)

Based on data as of 10/17/2011



The Peter J. Tobin College of Business (34)
 Student Enrollment - Graduate Division
 Queens, Rome, and Manhattan
 Fall 2001 - Fall 2011

Rome Campus											
PROGRAM	2001	2002	2003	2004	2005	2006	2007	2008	2009	2010	2011
Master in Business Administration (MBA)	54	49	46	51	42	41	38	37	33	38	30
BUS Business Administration	-	-	-	-	-	13	27	32	32	37	29
Finance	-	-	-	-	-	1	9	6	10	14	9
International Business	-	-	-	-	-	7	12	18	17	17	11
Marketing	-	-	-	-	-	5	6	8	5	6	9
FIN Finance	38	31	21	25	15	13	7	3	1	1	1
INTB International Business	0	3	13	15	13	8	1	-	-	-	-
MKT Marketing	16	15	12	11	14	7	3	2	-	-	-
NM Non-Matric	1	1	1	0	0	0	2	-	-	-	-
TOTAL ROME:	55	50	47	51	42	41	40	37	33	38	30
PERCENT CHANGE:		-9.1%	-6.0%	8.5%	-17.6%	-2.4%	-2.4%	-7.5%	-10.8%	15.2%	-21.1%

Manhattan Campus											
PROGRAM	2001	2002	2003	2004	2005	2006	2007	2008	2009	2010	2011
Master in Business Administration (MBA)	52	45	40	52	63	70	87	106	119	105	80
BUS Business Administration	-	-	-	-	31	40	64	89	102	85	71
Public Accounting	-	-	-	-	-	2	4	1	-	-	-
Finance	-	-	-	-	-	5	34	56	66	48	43
Financial Management of Risk	-	-	-	-	-	-	3	4	3	2	1
Risk Management & Insurance	-	-	-	-	31	33	23	27	32	34	27
Taxation	-	-	-	-	-	-	-	1	1	1	-
ACC 1 Public Accounting	-	-	1	1	3	2	2	8	15	19	9
ACT Actuarial Science	1	-	-	-	-	-	-	-	-	-	-
FIN Finance	-	-	7	26	29	28	21	9	2	1	-
RMI Risk Management and Insurance	51	45	32	25	-	-	-	-	-	-	-
Master in Science (MS)	18	19	13	23	45	72	98	95	90	131	134
ACC 1 Public Accounting	-	-	-	-	5	12	22	25	30	43	40
ERM Enterprise Risk Management	-	-	-	-	-	-	-	-	-	12	4
INVM Investment Management	-	-	-	-	-	-	-	-	-	13	16
MGTR Management of Risk (MS) ⁶	18	19	13	22	35	49	64	58	48	50	52
TAX Taxation	-	-	-	1	5	11	12	12	12	13	22
Advanced Certificate (APCRT/ADV CRT)	-	-	-	-	-	1	1	-	-	-	1
ACC 1 Public Accounting	-	-	-	-	-	1	1	-	-	-	-
FIN Finance	-	-	-	-	-	-	-	-	-	-	1
NM Non-Matric	-	-	-	-	-	-	-	-	1	-	-
TOTAL MANHATTAN:	70	64	53	75	108	143	186	201	210	236	215
PERCENT CHANGE:		-8.6%	-17.2%	41.5%	44.0%	32.4%	30.1%	8.1%	4.5%	12.4%	-8.9%
QUEENS, ROME & MANHATTAN TOTAL:	662	646	626	646	652	624	676	706	788	859	745
PERCENT CHANGE:		-2.4%	-3.1%	3.2%	0.9%	-4.3%	8.3%	4.4%	11.6%	9.0%	-13.3%

Beginning in Fall 2006, New MBA graduate students are coded as Business Administration (BUS) with a specific concentration.

⁵ Formerly Quantitative Analysis

⁶ Formerly Risk Management and Insurance

Prepared by: Office of Institutional Research (cmg/sp/aj)

Based on data as of 10/17/2011



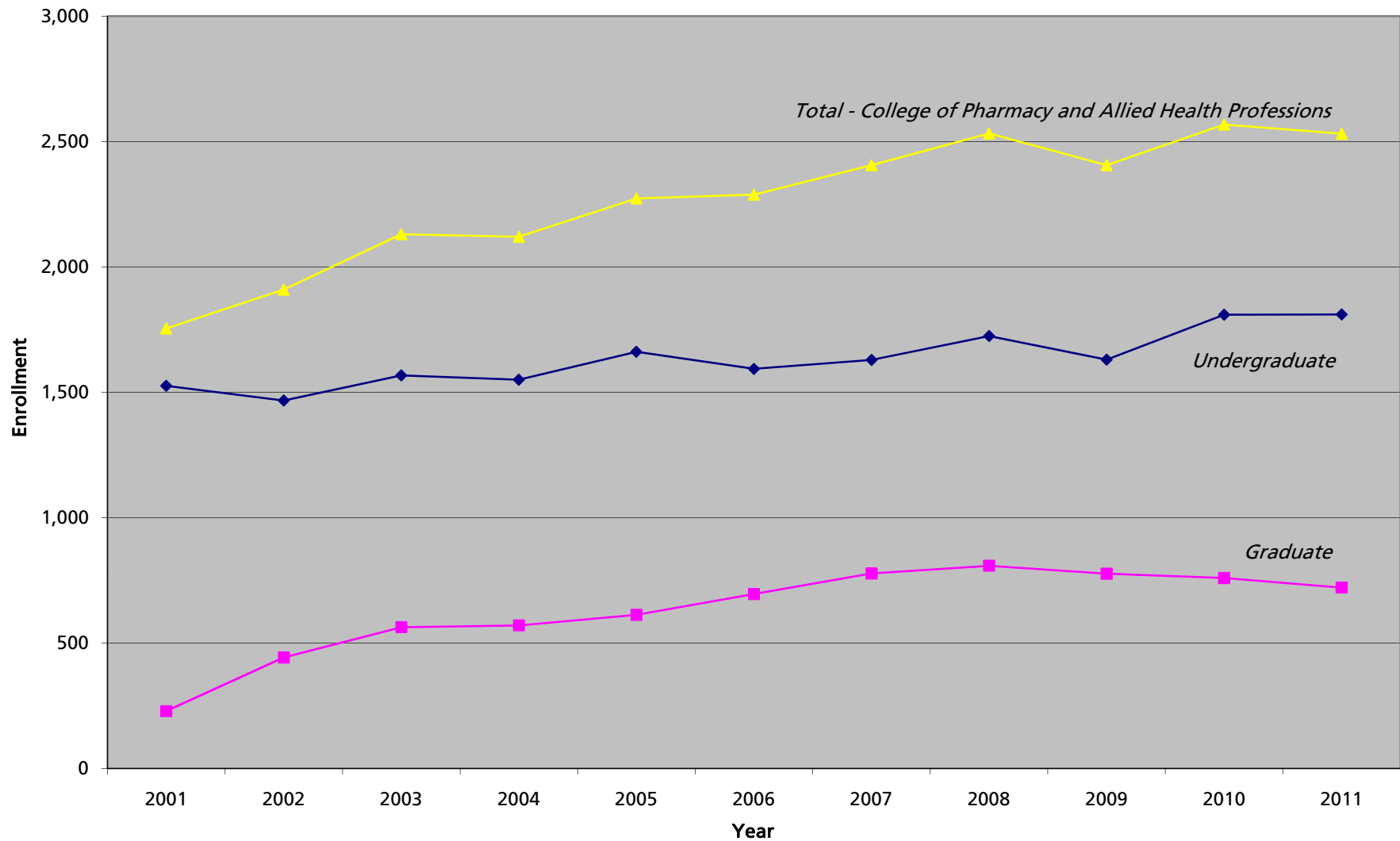
The Peter J. Tobin College of Business (84)
 Student Enrollment - Graduate Division
 Staten Island Campus
 Fall 2001 - Fall 2011

PROGRAM	2001	2002	2003	2004	2005	2006	2007	2008	2009	2010	2011
Master in Business Administration (MBA)	84	80	58	63	60	45	40	37	34	28	23
<i>BUS Business Administration</i>	-	-	-	-	-	1	6	12	18	11	6
Finance	-	-	-	-	-	-	4	6	12	9	5
Executive Management	-	-	-	-	-	1	2	6	6	2	1
ACC1 Public Accounting	3	2	8	12	19	17	22	22	15	16	17
FIN Finance	63	55	36	39	27	16	7	2	-	-	-
MGT1 Executive Management	18	20	11	11	13	11	5	1	1	1	-
TAX Taxation	0	3	3	1	1	-	-	-	-	-	-
Master in Science (MS)	26	19	21	6	9	3	6	10	13	14	16
ACC2 Accounting BS/MS	26	19	21	6	9	3	6	10	11	13	16
ACC Accounting	-	-	-	-	-	-	-	-	1	-	-
TAX Taxation	-	-	-	-	-	-	-	-	1	1	-
Advanced Certificate (APCRT/ADVCR)	1	1	-	-	-	-	-	-	-	-	-
ACC1 Public Accounting	1	1	-	-	-	-	-	-	-	-	-
0000 Undeclared	0	0	0	0	0	1	0	0	0	0	0
NM Non-Matric	1	0	0	0	0	0	0	0	0	0	0
TOTAL:	112	100	79	69	69	49	46	47	47	42	39
PERCENT CHANGE:		-10.7%	-21.0%	-12.7%	0.0%	-29.0%	-6.1%	2.2%	0.0%	-10.6%	-7.1%

Note: Beginning in fall 2006, New MBA graduate students are coded as Business Administration (BUS) with a specific concentration.



College of Pharmacy and Allied Health Professions Student Enrollment Fall 2001 - Fall 2011



Note: Beginning in 2002, 5th and 6th year PharmD students are coded as graduate students.



College of Pharmacy and Allied Health Professions (05)
 Student Enrollment - Undergraduate Division
 Queens Campus
 Fall 2001 - Fall 2011

PROGRAM	2001	2002	2003	2004	2005	2006	2007	2008	2009	2010	2011
CLINICAL LAB SCIENCE/MED TECH	17	15	26	43	52	53	54	80	63	51	38
CLSC Clinical Laboratory Sciences ¹³	-	-	-	-	-	-	-	-	-	-	36
MED Medical Tech	16	15	26	43	52	53	54	80	63	51	2
MEDS Medical Tech - Self Pace ³	1	-	-	-	-	-	-	-	-	-	-
NURSING COMBINED²	2	1	-	-	-	-	-	-	-	-	-
NUR Nursing ²	1	1	-	-	-	-	-	-	-	-	-
NURS Nursing - Self Pace ³	1	0	-	-	-	-	-	-	-	-	-
PHARMACY COMBINED	1,233	1,140	1,157	1,137	1,158	1,114	1,114	1,103	1,073	1,199	1,197
PHA Pharmacy ²	245	15	20	3	-	-	-	-	-	-	-
PHA6 Pharmacy - 6 Yr PharmD	933	1,068	1,114	1,132	1,157	1,114	1,114	1,103	1,073	1,199	1,197
PHAS Pharmacy - Self Pace ³	55	57	23	2	1	-	-	-	-	-	-
PHYSICIAN ASSISTANT COMBINED	241	268	314	288	336	330	379	421	381	373	383
PNT Physician Assistant	225	250	302	286	334	329	379	421	381	373	383
PNTS Physician Assist - Self Pace ³	16	18	12	2	2	1	-	-	-	-	-
TOXICOLOGY COMBINED	26	34	61	67	101	82	77	65	56	78	65
TOX Toxicology	26	33	61	67	101	82	77	65	56	78	65
TOXS Toxicology - Self-Pace ^{2,3}	-	1	-	-	-	-	-	-	-	-	-
OTHER PROGRAMS											
CYT Cytotechnology	0	0	3	3	-	-	-	-	-	-	-
RAD Radiologic Sciences	-	-	-	-	-	-	-	55	57	108	127
PAT Pathologist's Assistant ²	7	9	6	12	14	14	5	-	-	-	-
TOTAL:	1,526	1,467	1,567	1,550	1,661	1,593	1,629	1,724	1,630	1,809	1,810
PERCENT CHANGE:		-3.9%	6.8%	-1.1%	7.2%	-4.1%	2.3%	5.8%	-5.5%	11.0%	0.1%

Note: Since 2002, 5th and 6th year PharmD students are coded as graduate students.

² No longer offered

³ Not a program

¹³ Formerly Medical Technology

Prepared by: Office of Institutional Research (cmg/sp/aj)

Based on data as of 10/17/2011



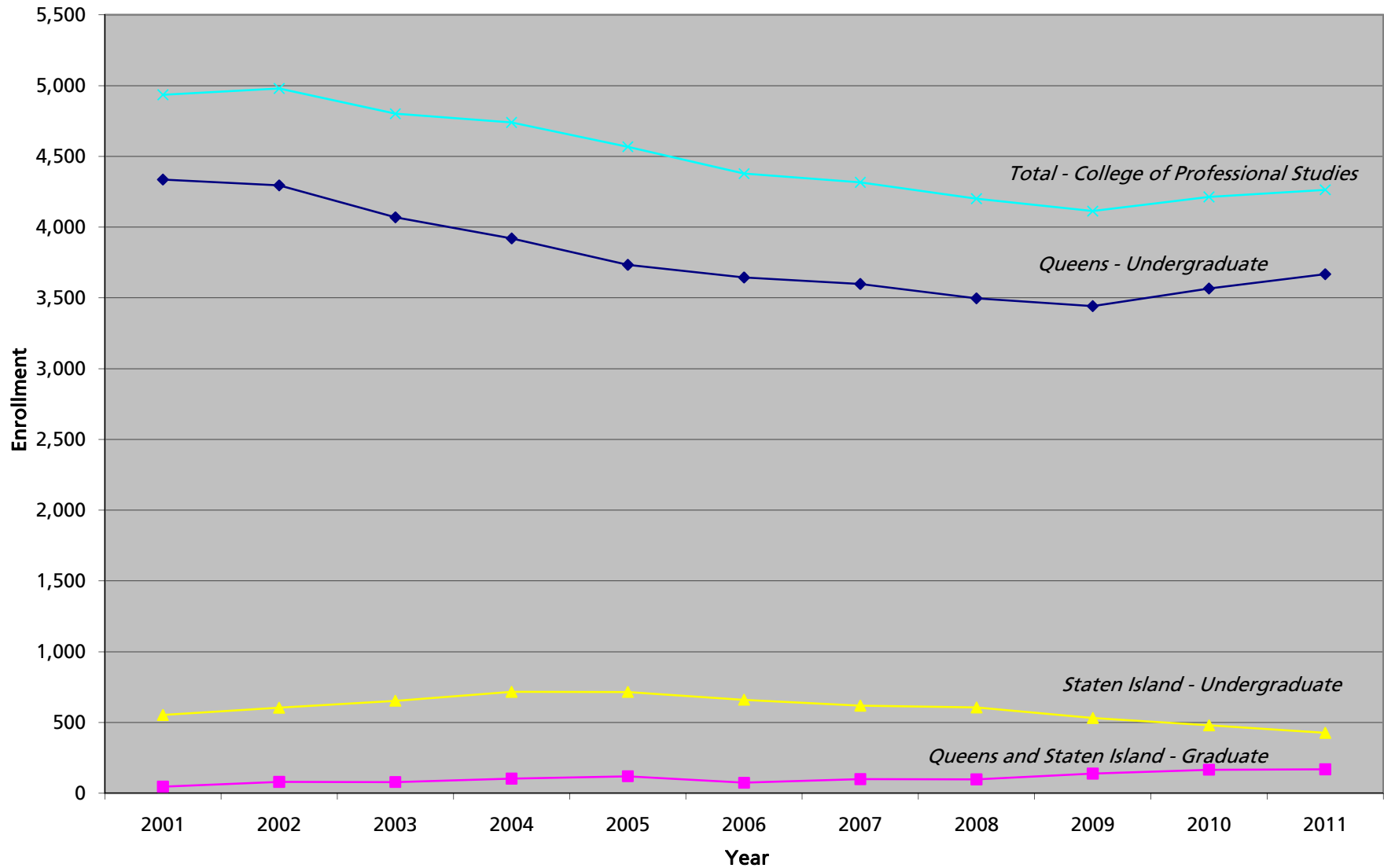
College of Pharmacy and Allied Health Professions (25)
 Student Enrollment - Graduate Division
 Queens Campus
 Fall 2001 - Fall 2011

PROGRAM	2001	2002	2003	2004	2005	2006	2007	2008	2009	2010	2011
PHA1 Pharmaceutical Sciences (MS and PhD)	103	110	113	122	130	151	185	203	176	184	174
PHARMACY COMBINED	96	301	427	427	457	518	566	570	567	544	520
PHA6 Pharmacy - 6Yr PharmD	-	171	343	354	389	460	513	489	489	494	489
PHA2 Pharmacy Administration	16	22	25	23	22	22	33	60	65	46	31
PHA9 Pharmacy, Practitioner Option	80	108	59	50	46	36	20	21	13	4	-
OTHER PROGRAMS											
MED Medical Technology	1	1	0	1	-	-	-	-	-	-	-
TOX Toxicology	16	19	16	19	20	23	22	31	32	28	23
NM Non-Matric	12	11	7	1	5	3	4	4	1	3	4
TOTAL:	228	442	563	570	612	695	777	808	776	759	721
PERCENT CHANGE:		93.9%	27.4%	1.2%	7.4%	13.6%	11.8%	4.0%	-4.0%	-2.2%	-5.0%

Note: Since 2002, 5th and 6th year PharmD students are coded as graduate students.



College of Professional Studies Student Enrollment Fall 2001 - Fall 2011



Note: Graduate program on Staten Island Campus began in Fall 2003

PROGRAM	2001	2002	2003	2004	2005	2006	2007	2008	2009	2010	2011
ADVERTISING COMMUNICATION COMBINED	-	-	-	-	47	96	119	129	125	124	113
ADV Advertising Communication	-	-	-	-	28	-	-	-	-	-	-
ADVCM Advertising Communication (Creative Trk)	-	-	-	-	6	80	97	99	106	79	60
ADVM Advertising Communication (Acc. Mgt)	-	-	-	-	10	11	11	17	11	32	33
ADVP Advertising Communication (Media Planning)	-	-	-	-	3	5	11	13	8	13	20
BUSINESS COMBINED	185	169	112	88	65	66	42	44	65	89	58
BUS Business Administration (AS)	155	145	94	73	57	61	39	43	65	89	58
BUS1 Business - Accounting Option (AS)	30	24	18	15	8	5	3	1	0	0	0
COMMUNICATION ARTS COMBINED	443	446	443	440	433	424	390	336	330	342	349
CAS Communication Arts	443	446	442	437	430	420	389	334	329	341	349
CAS1 Communication Arts/Sociology	0	0	1	3	2	4	1	2	1	1	-
CAS2 Communication Arts/Gov&Politic	-	-	-	-	1	-	-	-	-	-	-
COMPUTER SCIENCE & IT COMBINED	829	673	464	345	243	193	177	194	235	243	256
CUS Computer Science	504	368	259	189	125	121	101	111	126	122	110
CUS2/CUSB Computer Science (Business)	218	190	123	89	61	33	33	27	20	18	24
CUS3/CUST Computer Science (Telecom.)	78	93	69	51	37	13	8	6	6	5	10
CUSC Computer Science	-	-	-	-	-	-	1	0	1	1	-
CUSF Computer Science	-	-	-	-	-	-	1	4	3	2	2
CUSG Computer Science (Media)	-	-	-	-	1	4	5	0	2	2	2
CUSM Computer Science	-	-	-	-	-	-	1	0	1	3	1
CUSS Computer Science (Security Systems)	-	-	-	-	-	2	4	8	7	7	8
CUSW Computer Science	-	-	-	-	-	-	-	-	-	2	3
CUS1 Microcomputer Systems ²	29	22	13	-	-	-	-	-	-	-	-
CSS Computer Security Systems	-	-	-	-	-	-	1	17	33	54	69
IT Information Technology	-	-	-	16	1	2	2	1	16	6	2
ITB Information Technology (Business)	-	-	-	-	14	12	15	14	14	18	23
ITC Information Technology	-	-	-	-	-	-	-	-	1	-	-
ITF Information Technology (CYBF)	-	-	-	-	-	-	-	1	1	2	-
ITG Information Technology (Graphic Design)	-	-	-	-	1	2	2	3	2	1	2
ITS Information Technology (SECS)	-	-	-	-	-	-	-	1	2	-	-
ITT Information Technology (Telecomm.)	-	-	-	-	3	4	3	1	-	-	-
CRIMINAL JUSTICE COMBINED	532	545	535	529	509	498	441	409	364	395	425
CRJ Criminal Justice (BS)	468	492	501	509	456	448	389	371	303	310	339
CRJ1 Criminal Justice (AS)	40	40	30	19	23	18	21	9	7	12	8
CRJ2 Criminal Justice/Sociology	0	0	1	1	6	6	2	0	2	2	0
CRJ3 Criminal Justice/Gov't & Polit	0	0	2	0	1	0	0	0	0	1	0
CRJ5 Criminal Justice - International Spec.	5	2	-	-	-	-	-	-	-	-	-
CRJ6 Criminal Justice - Legal Studies Spec.	19	11	1	-	-	-	-	-	-	-	-
CRJF Criminal Justice (Forensic Psychology)	-	-	-	-	23	26	29	29	52	70	78
ELECTRONIC DATA PROCESS COMBINED	40	35	21	1	-	-	-	-	-	-	-
EDP Electronic Data Processing (AS) ²	31	23	15	1	-	-	-	-	-	-	-
EDP1 Microcomputer Tech (AS) ²	9	12	6	-	-	-	-	-	-	-	-
HEALTH CARE COMBINED	102	97	97	113	105	95	105	103	105	87	59
HSA Health Services Administration	102	97	97	112	104	95	105	102	105	87	59
HSA2 Health Services Admin/Sociology	0	0	0	1	1	0	0	1	0	0	0
JOURNALISM COMBINED	97	106	116	144	162	172	199	188	179	185	183
JOU Journalism	96	106	116	142	160	171	199	188	179	184	182
JOU1 Journalism/Sociology	-	-	-	1	1	0	0	0	0	1	0
JOU2 Journalism - Government&Politics	1	0	0	1	1	1	0	0	0	0	1
LEGAL STUDIES COMBINED	169	236	290	305	349	375	364	405	380	390	399
LES Legal Studies (BS)	151	209	271	289	329	363	358	401	371	384	392
LES1 Legal Studies (AS)	16	21	15	13	16	11	5	4	6	5	6
LES2 Legal Studies/Sociology	0	0	1	3	0	0	0	0	1	1	0
LES3 Legal Studies/Gov & Politics	0	0	0	0	0	0	0	0	1	0	0
LES9 Legal Studies (Certificate)	2	6	3	0	4	1	1	0	1	0	1
NETWORKING/TELECOMMUNICATION COMBINED	67	76	77	76	48	28	29	25	12	12	15
NET Networking & Telecommunication	-	-	-	-	-	-	-	-	9	12	15
TEL Telecommunications (BS)	31	29	29	26	20	11	11	13	2	-	-
TEL1 Telecommunications (AS)	5	7	3	2	2	-	-	-	-	-	-
TEL2/TELB Telecommunications (Business Option)	23	33	37	37	19	13	14	9	0	-	-
TEL3/TELU Telecommunications (Multi Media)	8	7	8	11	7	2	1	-	-	-	-
TELC Telecommunications (Corporate Security)	-	-	-	-	-	2	-	-	-	-	-
TELG Telecommunications	-	-	-	-	-	-	3	3	1	-	-

² No Longer Offered

Note: Figures include Distance Learning Students. Please refer to the Distance Learning Enrollment Report.



**College of Professional Studies (03)
Student Enrollment - Undergraduate Division
Queens Campus
Fall 2001 - Fall 2011**

PROGRAM	2001	2002	2003	2004	2005	2006	2007	2008	2009	2010	2011
TELEVISION COMBINED	87	93	107	121	119	143	137	157	196	190	157
TVF Television and Film Prod (BS)	67	72	80	81	75	136	137	156	194	190	157
TVF1 Television And Film (AS)	7	4	5	8	8	7	0	1	2	-	-
TVF2 Television And Film Prod/Video	5	9	13	9	10	-	-	-	-	-	-
TVF3 Tele And Film Prod/Film Studies	8	8	9	23	26	-	-	-	-	-	-
OTHER PROGRAMS											
ADS Administrative Studies	50	59	57	48	38	46	55	64	44	30	45
DAFT Dramatic Arts, Film & Television	-	-	-	-	-	-	-	-	-	2	10
FSA Funeral Service Administration	13	14	16	10	8	6	6	5	5	7	8
HCI Healthcare Informatics	-	-	-	-	-	-	-	-	-	6	11
HCS Homeland & Corporate Security ¹²	-	-	-	-	-	-	-	5	17	43	79
HHS Health and Human Services	-	-	-	-	-	-	-	-	-	15	57
HMT Hospitality Management	102	85	90	81	80	102	123	112	116	111	94
HSC Human Services ¹⁰	31	42	65	64	51	40	46	40	38	33	10
LAS Liberal Arts (AA)	233	226	237	176	142	95	62	50	38	34	25
LGE Legal Environments of Enterprise	-	-	-	-	-	-	-	-	-	2	21
LST Liberal Studies	28	23	25	25	22	31	500	630	585	604	603
LIT Literature & Speech	8	5	4	1	-	-	-	-	-	-	-
PHOJ Photojournalism	-	-	-	-	-	-	-	-	-	1	12
PUBR Public Relations	-	-	-	-	-	-	29	87	140	162	204
PSS Paraprof School Service (AS) ²	1	-	-	-	-	-	-	-	-	-	-
REM Real Estate Management ²	3	-	-	-	-	-	-	-	-	-	-
SPM Sport Management	290	325	323	330	320	355	338	346	383	413	428
SSC Social Science	26	20	10	5	3	2	2	1	0	1	-
0000 Undeclared	993	1017	977	1017	986	875	433	166	84	46	47
NM Non-Matric	7	3	3	1	3	2	1	1	1	-	-
TOTAL:	4,336	4,295	4,069	3,920	3,733	3,644	3,598	3,497	3,442	3,567	3,668
PERCENT CHANGE:		-0.9%	-5.3%	-3.7%	-4.8%	-2.4%	-1.3%	-2.8%	-1.6%	3.6%	2.8%

² No longer offered

¹⁰ Formerly offered in The School of Education

¹² Prior to 2008, was known as Security Administration

As of Fall 2005, some major codes were changed to take concentrations into consideration and standardize them in Banner.

As of Fall 2007, conditionally accepted incoming freshmen have been coded as LST. Previously, they were coded as Undeclared.

As of Fall 2009, Telecommunications is now Networking and Telecommunications.

As of Fall 2011, Health Services Administration and Human Services are no longer accepting new students. Students are now enrolled in Health and Human Services.

Figures include Distance Learning Students. Please refer to the Distance Learning Enrollment Report.



**College of Professional Studies (53)
Student Enrollment - Undergraduate Division
Staten Island Campus
Fall 2001 - Fall 2011**

PROGRAM	2001	2002	2003	2004	2005	2006	2007	2008	2009	2010	2011
ADVERTISING COMMUNICATION	-	-	-	-	-	-	-	1	4	4	6
ADVC Advertising Communication	-	-	-	-	-	-	-	1	2	3	4
ADVM Advertising Communication	-	-	-	-	-	-	-	-	1	1	2
ADVP Advertising Communication	-	-	-	-	-	-	-	-	1	-	-
BUSINESS COMBINED	140	130	112	105	64	42	20	9	8	3	1
BUS Business Administration (AS)	134	126	112	105	64	42	20	9	8	3	1
BUS1 Business - Accounting Option (AS)	6	4	-	-	-	-	-	-	-	-	-
CRIMINAL JUSTICE COMBINED	90	91	93	110	121	105	92	97	87	92	95
CRJ Criminal Justice	76	67	68	78	100	86	80	84	76	83	87
CRJ1 Criminal Justice (AS)	14	24	25	32	21	19	5	5	3	1	1
CRJF Criminal Justice	-	-	-	-	-	-	7	8	8	8	7
LEGAL STUDIES COMBINED	84	113	129	128	125	106	95	90	88	58	48
LES Legal Studies (BS)	69	92	111	106	110	96	90	87	86	57	46
LES1 Legal Studies (AS)	15	21	17	20	14	9	5	3	2	-	2
LES9 Legal Studies (CERT)	0	0	1	2	1	1	-	-	-	1	-
TELECOMMUNICATIONS COMBINED	12	12	16	19	15	6	3	3	1	1	1
TEL Telecommunications (BS)	10	9	11	12	14	6	3	3	1	1	1
TEL1 Telecommunications (AS)	1	2	2	1	1	-	-	-	-	-	-
TEL2 Telecommunications (Bus Opt)	1	1	3	6	-	-	-	-	-	-	-
TELEVISION COMBINED	25	24	23	22	16	14	12	17	17	19	21
TVF Television and Film Prod (BS)	18	18	20	17	14	14	12	17	17	19	21
TVF1 Television and Film Prod (AS)	3	3	1	2	-	-	-	-	-	-	-
TVF2 Television & Film Prod: Video	2	2	1	2	2	-	-	-	-	-	-
TVF3 Television & Film Prod: Film Std	2	1	1	1	-	-	-	-	-	-	-
TRANSPORTATION COMBINED	1	-	-	-	-	-	-	-	-	-	-
TRA Transportation 7	0	0	0	0	0	0	0	0	0	-	-
TRA1 Transportation And Logistics ⁷	1	-	-	-	-	-	-	-	-	-	-
OTHER PROGRAMS											
ADS Administrative Studies	1	1	0	1	0	2	2	3	5	3	2
CAS Communication Arts	102	141	165	161	144	105	110	118	96	76	68
FSA Funeral Service Admin	5	9	6	9	5	6	6	8	7	4	5
HCS Homeland & Corporate Security ¹²	1	1	1	1	1	1	1	1	1	4	5
HSA Health Services Administration	5	-	-	-	-	-	-	-	-	-	-
HMT Hospitality Management	27	19	17	18	22	20	26	24	27	20	19
JOU Journalism	-	-	-	-	-	-	-	1	5	11	9
LST Liberal Studies	-	-	-	-	-	-	84	128	116	123	95
PUBR Public Relations	-	-	-	-	-	-	-	1	3	4	10
SCA Security & Corporate Admin	1	-	-	-	-	-	-	-	-	-	-
SPM Sport Management	35	43	44	59	61	62	71	59	40	42	32
0000 Undeclared	24	20	47	83	141	191	97	46	27	16	10
TOTAL:	553	604	653	716	715	660	619	606	532	480	427
PERCENT CHANGE:		9.2%	8.1%	9.6%	-0.1%	-7.7%	-6.2%	-2.1%	-12.2%	-9.8%	-11.0%

Notes:

As of Fall 2005, some major codes were changed to take concentrations into consideration and standardize them in Banner.

⁷ Formerly offered in Notre Dame College

¹² Prior to 2008, was known as Security Administration

As of Fall 2007, conditionally accepted incoming freshmen have been coded as LST. Previously, they were coded as Undeclared.

Figures include Distance Learning Students. Please refer to the Distance Learning Enrollment Report.



**College of Professional Studies
Student Enrollment - Graduate Division
Fall 2001 - Fall 2011**

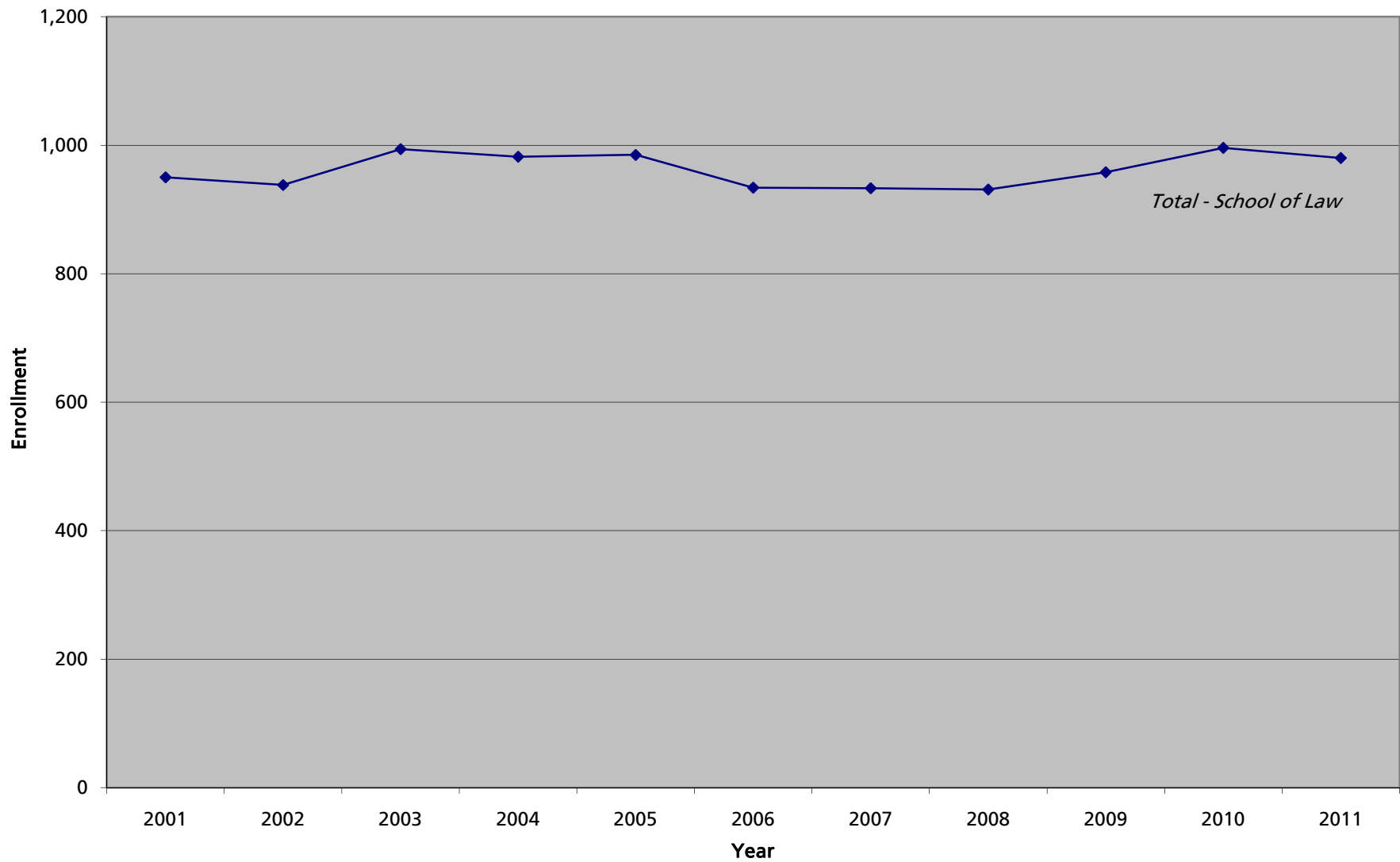
Queens Campus (23)											
PROGRAM	2001	2002	2003	2004	2005	2006	2007	2008	2009	2010	2011
CRL Criminal Justice Leadership	46	78	54	78	82	46	49	42	52	57	46
SPM Sport Management	-	-	-	-	-	-	23	34	45	58	66
ICM International Communications	-	-	-	-	-	-	-	-	26	35	39
NM Non-Matric	0	2	1	1	2	1	1	2	-	-	7
TOTAL:	46	80	55	79	84	47	73	78	123	150	158
PERCENT CHANGE:		73.9%	-31.3%	43.6%	6.3%	-44.0%	55.3%	6.8%	57.7%	22.0%	5.3%

Staten Island Campus (83)											
PROGRAM	2001	2002	2003	2004	2005	2006	2007	2008	2009	2010	2011
CRL Criminal Justice Leadership	-	-	24	23	32	22	24	19	12	14	10
0000 Undeclared	-	-	-	-	3	5	0	1	1	-	-
NM Non-Matric	-	-	-	1	1	0	3	0	3	2	1
TOTAL:			24	24	36	27	27	20	16	16	11
PERCENT CHANGE:			0.0%	50.0%	-25.0%	0.0%	-25.9%	-20.0%	0.0%	-31.3%	
Queens and Staten Island Total:	46	80	79	103	120	74	100	98	139	166	169
PERCENT CHANGE:		73.9%	-1.3%	30.4%	16.5%	-38.3%	35.1%	-2.0%	41.8%	19.4%	1.8%

*Note: Queens: College of Professional Studies- Graduate Division started in Fall 2000
Staten Island: College of Professional Studies-Graduate Division began in Fall 2003
9 S.I. Students were coded as Queens in Fall 2002.
Queens figures may include Oakdale Students. Please refer to the Oakdale Enrollment Report.*



School of Law Student Enrollment Fall 2001 - Fall 2011





School of Law (28)
Student Enrollment - Graduate Division
Queens Campus
Fall 2001 - Fall 2011

PROGRAM		2001	2002	2003	2004	2005	2006	2007	2008	2009	2010	2011
LAW	Law	936	918	974	966	964	922	915	894	922	949	936
LLMB	Masters In Bankruptcy (LLM)	14	20	20	16	16	11	16	19	28	29	29
LLMU	US Legal Studies Foreign Lw Grd	-	-	-	-	-	-	-	17	7	18	15
NM	Non-Matric	-	-	-	-	5	1	2	1	1	-	-
TOTAL:		950	938	994	982	985	934	933	931	958	996	980
PERCENT CHANGE:			-1.3%	6.0%	-1.2%	0.3%	-5.2%	-0.1%	-0.2%	2.9%	4.0%	-1.6%



Institute for Biotechnology (39)
Student Enrollment - Graduate Division
Queens Campus
Fall 2001 - Fall 2011

PROGRAM	2001	2002	2003	2004	2005	2006	2007	2008	2009	2010	2011
BIOT Biological/ Pharmaceutical Biot	-	-	-	-	-	-	9	15	21	20	20
TOTAL:							9	15	21	20	20
PERCENT CHANGE:								66.7%	40.0%	-4.8%	0.0%

Note: This Institute began in Spring 2007



College Advantage Program (09)
 Student Enrollment - Undergraduate Division
 Queens and Staten Island Campuses
 Fall 2001 - Fall 2011

Queens Campus											
PROGRAM	2001	2002	2003	2004	2005	2006	2007	2008	2009	2010	2011
CA1 College Advantage Program	1,339	1,431	1,593	1,512	1,693	1,721	1,708	1,586	1,911	2,803	2,981
TOTAL:	1,339	1,431	1,593	1,512	1,693	1,721	1,708	1,586	1,911	2,803	2,981
PERCENT CHANGE:	10.2%	6.9%	11.3%	-5.1%	12.0%	1.7%	-0.8%	-7.1%	20.5%	46.7%	6.4%

Staten Island Campus											
PROGRAM	2001	2002	2003	2004	2005	2006	2007	2008	2009	2010	2011
CA1 College Advantage Program	564	540	722	965	959	843	824	762	666	706	945
TOTAL:	564	540	722	965	959	843	824	762	666	706	945
PERCENT CHANGE:	0.0%	-4.3%	33.7%	33.7%	-0.6%	-12.1%	-2.3%	-7.5%	-12.6%	6.0%	33.9%

QUEENS & STATEN ISLAND TOTAL:	1,903	1,971	2,315	2,477	2,652	2,564	2,532	2,348	2,577	3,509	3,926
PERCENT CHANGE:	7.0%	3.6%	17.5%	7.0%	7.1%	-3.3%	-1.2%	-7.3%	9.8%	36.2%	11.9%

Note: Previous to Fall 2008, the College Advantage Program was coded as High School Extension.