



# Fact Book

Fall 2010

Enrollment Trends

Report by Major 2000-2010

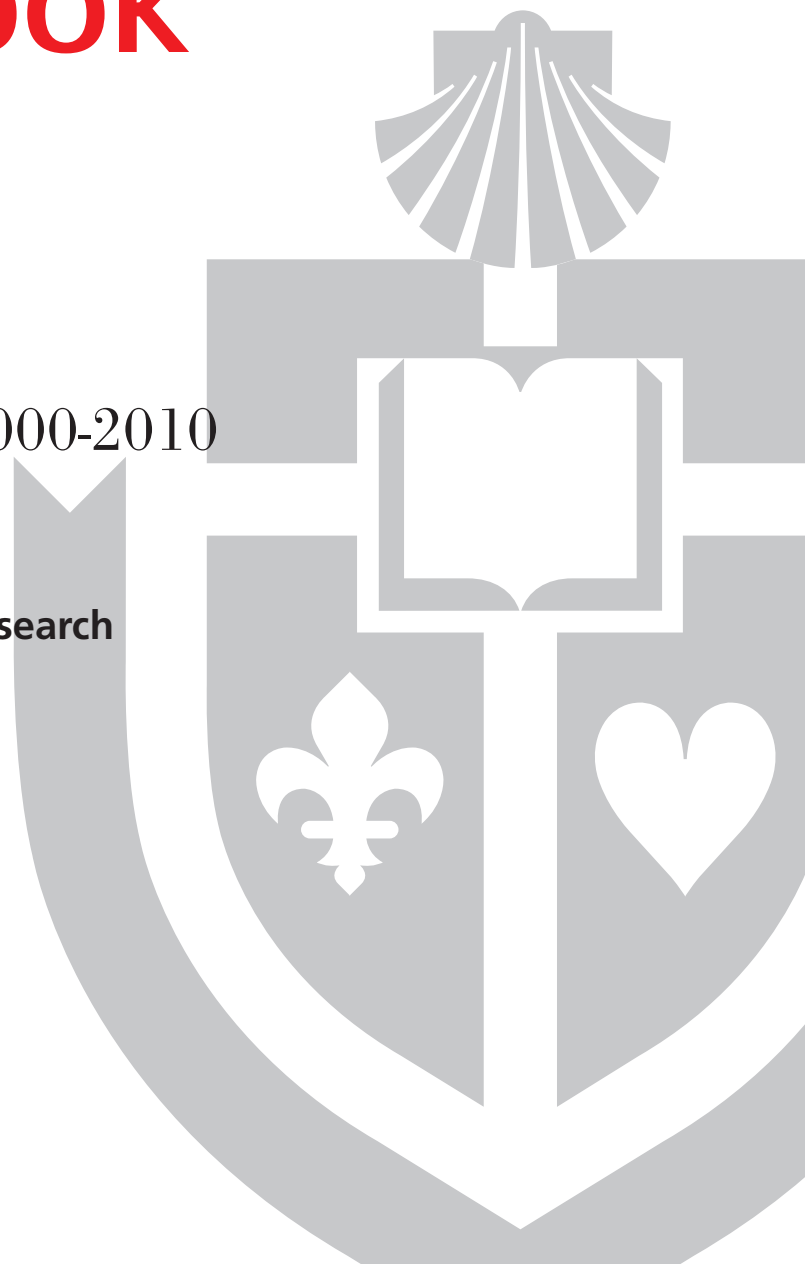
**Office of Institutional Research**

T (718) 990-1869

F (718) 990-2314

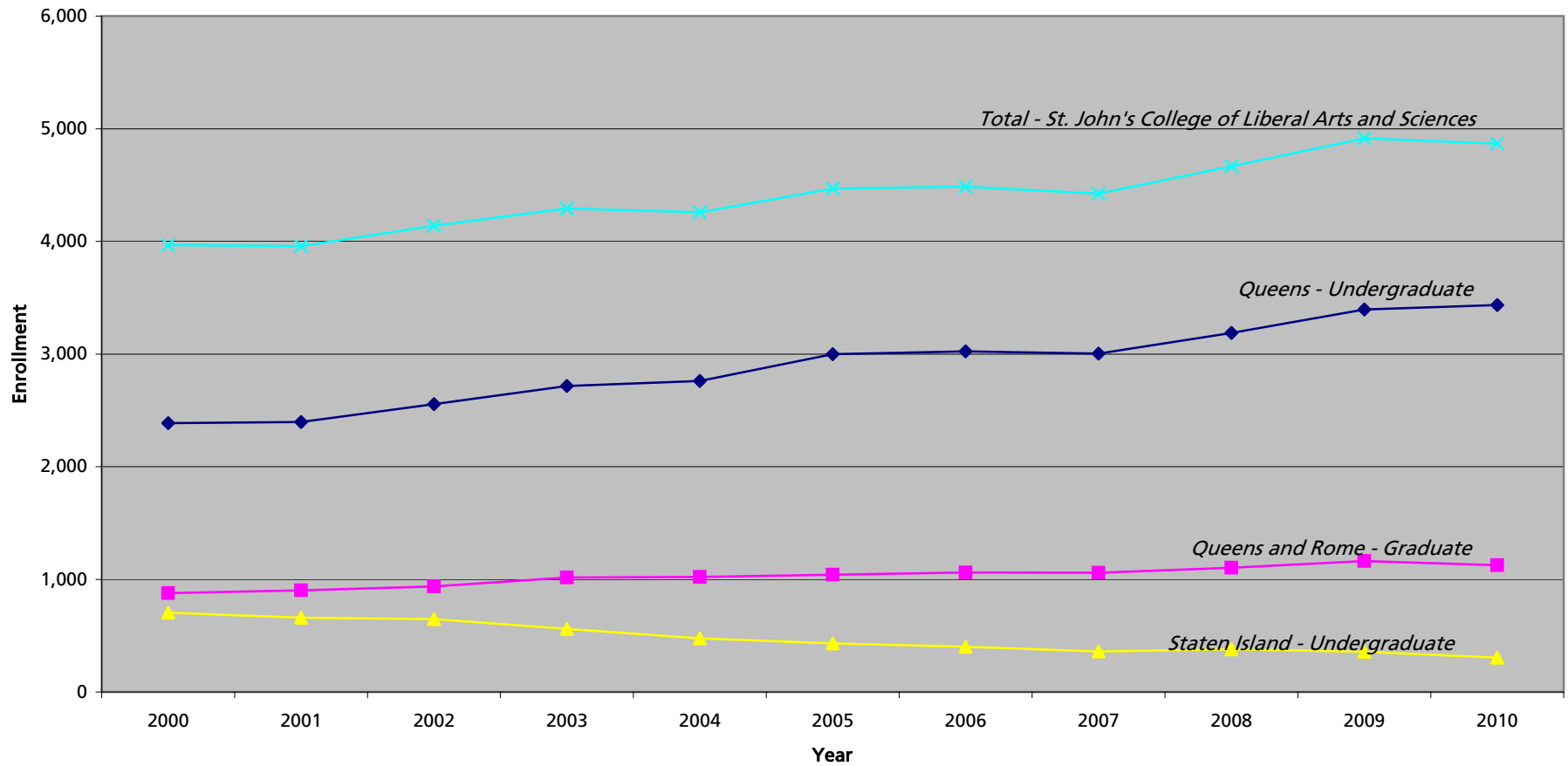
[ir@stjohns.edu](mailto:ir@stjohns.edu)

[www.stjohns.edu/about/ir](http://www.stjohns.edu/about/ir)





# St. John's College of Liberal Arts and Sciences Student Enrollment Fall 2000 - Fall 2010





St. John's College of Liberal Arts and Sciences (01)  
 Student Enrollment - Undergraduate Division  
 Queens Campus  
 Fall 2000- Fall 2010

PROGRAM	2000	2001	2002	2003	2004	2005	2006	2007	2008	2009	2010
<b>BIOLOGY COMBINED</b>	<b>440</b>	<b>410</b>	<b>464</b>	<b>519</b>	<b>514</b>	<b>544</b>	<b>573</b>	<b>550</b>	<b>571</b>	<b>632</b>	<b>668</b>
BIO Biology	390	359	432	485	497	526	569	547	568	631	667
BIO1 Biology 7-12 <sup>2</sup>	7	3	1	2	0	2	-	-	-	-	-
BIO2 Biology/Dentistry	4	2	0	1	2	4	3	1	1	0	0
BIO3 Biology/Optometry	2	0	0	0	0	0	0	1	1	1	1
BIO5 Biology/Podiatric Medicine	-	-	-	-	-	-	-	-	1	0	0
BIOS Biology - Self Pace <sup>3</sup>	37	46	31	31	15	12	1	1	-	-	-
<b>CHEMISTRY COMBINED</b>	<b>43</b>	<b>38</b>	<b>59</b>	<b>57</b>	<b>69</b>	<b>80</b>	<b>85</b>	<b>86</b>	<b>84</b>	<b>113</b>	<b>112</b>
CHE Chemistry	41	34	56	56	69	79	85	86	84	113	112
CHE1 Chemistry 7-12 <sup>2</sup>	0	1	0	0	0	1	-	-	-	-	-
CHES Chemistry - Self Pace <sup>3</sup>	2	3	3	1	-	-	-	-	-	-	-
<b>ECONOMICS COMBINED</b>	<b>24</b>	<b>22</b>	<b>23</b>	<b>38</b>	<b>42</b>	<b>37</b>	<b>52</b>	<b>57</b>	<b>57</b>	<b>50</b>	<b>47</b>
ECO Economics	23	22	23	38	42	37	52	57	57	50	47
ECO1 Economics Social Studies 7-12 <sup>2</sup>	1	-	-	-	-	-	-	-	-	-	-
<b>ENGLISH COMBINED</b>	<b>141</b>	<b>144</b>	<b>145</b>	<b>149</b>	<b>162</b>	<b>179</b>	<b>192</b>	<b>187</b>	<b>228</b>	<b>228</b>	<b>229</b>
ENG English	104	117	133	148	160	177	192	187	228	228	229
ENG1 English 7-12 <sup>2</sup>	37	27	12	1	2	2	-	-	-	-	-
<b>ENVIRONMENTAL STUDIES COMBINED</b>	<b>40</b>	<b>29</b>	<b>31</b>	<b>24</b>	<b>20</b>	<b>24</b>	<b>18</b>	<b>25</b>	<b>29</b>	<b>48</b>	<b>54</b>
ESP Environmental Studies (Ecology)	24	15	18	12	14	14	9	18	22	27	32
ESP2 Environmental Studies (Bio 7-12) <sup>2</sup>	3	4	1	-	-	-	-	-	-	-	-
ESP5 Environmental Studies (Social Sci)	13	8	12	12	6	10	9	7	7	21	22
ESPS Environmental Studies - Self Pace <sup>3</sup>	0	2	-	-	-	-	-	-	-	-	-
<b>FINE ARTS COMBINED</b>	<b>128</b>	<b>125</b>	<b>124</b>	<b>112</b>	<b>90</b>	<b>87</b>	<b>88</b>	<b>92</b>	<b>93</b>	<b>98</b>	<b>98</b>
FNA Art	17	19	21	19	19	13	22	23	21	20	11
FNA1 Graphic Design	91	82	80	68	45	44	38	38	43	49	48
FNA2 Creative Photography	10	12	11	14	17	18	14	15	18	19	28
FNA4 Illustration	10	12	12	11	9	12	14	16	11	10	11
<b>FRENCH COMBINED</b>	<b>9</b>	<b>8</b>	<b>6</b>	<b>10</b>	<b>13</b>	<b>17</b>	<b>10</b>	<b>16</b>	<b>21</b>	<b>20</b>	<b>18</b>
FRE French	8	6	6	10	13	17	10	16	21	20	18
FRE1 French 7-12 <sup>2</sup>	1	2	-	-	-	-	-	-	-	-	-
<b>GOVERNMENT COMBINED</b>	<b>225</b>	<b>239</b>	<b>246</b>	<b>250</b>	<b>244</b>	<b>250</b>	<b>235</b>	<b>239</b>	<b>237</b>	<b>252</b>	<b>251</b>
GOV Government & Politics	211	231	242	245	242	246	229	235	229	246	243
GOV1 Government & Politics Social Studies 7-12 <sup>2</sup>	6	4	1	1	-	-	-	-	-	-	-
GOV2 Public Admin & Public Service	7	3	3	4	2	4	6	4	8	6	8
GOV4 Government & Politics/Law	1	1	0	0	0	0	0	0	0	0	0
<b>HISTORY COMBINED</b>	<b>103</b>	<b>99</b>	<b>107</b>	<b>107</b>	<b>118</b>	<b>104</b>	<b>102</b>	<b>104</b>	<b>133</b>	<b>125</b>	<b>121</b>
HIS History	58	67	90	100	113	102	102	104	133	125	121
HIS1 History Social Studies 7-12 <sup>2</sup>	45	32	17	7	5	2	-	-	-	-	-

<sup>2</sup> No longer offered

<sup>3</sup> Not a program

Prepared by: Office of Institutional Research (cmg,mw)

Based on data as of 10/12/2010



St. John's College of Liberal Arts and Sciences (01)  
 Student Enrollment - Undergraduate Division  
 Queens Campus  
 Fall 2000- Fall 2010

PROGRAM	2000	2001	2002	2003	2004	2005	2006	2007	2008	2009	2010
<b>ITALIAN COMBINED</b>	<b>7</b>	<b>9</b>	<b>11</b>	<b>8</b>	<b>10</b>	<b>22</b>	<b>24</b>	<b>29</b>	<b>25</b>	<b>23</b>	<b>15</b>
ITA Italian	3	7	10	8	8	17	24	29	25	23	15
ITA1 Italian 7-12 <sup>2</sup>	4	2	1	0	2	5	-	-	-	-	-
<b>MATHEMATICS COMBINED</b>	<b>59</b>	<b>55</b>	<b>43</b>	<b>38</b>	<b>38</b>	<b>39</b>	<b>44</b>	<b>45</b>	<b>36</b>	<b>37</b>	<b>43</b>
MTH Mathematics	31	38	33	36	38	37	44	45	36	37	43
MTH1 Mathematics 7-12 <sup>2</sup>	28	17	10	2	0	2	-	-	-	-	-
<b>PHILOSOPHY COMBINED</b>	<b>50</b>	<b>58</b>	<b>53</b>	<b>50</b>	<b>58</b>	<b>74</b>	<b>69</b>	<b>68</b>	<b>74</b>	<b>81</b>	<b>92</b>
PHI Philosophy	44	54	38	36	58	64	61	59	59	73	74
PHI1 Philosophy - Theology	0	1	0	0	0	0	1	6	2	2	9
PHI2 Philosophical - Theological Studies	6	3	15	14	0	10	7	3	13	6	9
<b>PHYSICAL SCIENCE COMBINED</b>	<b>16</b>	<b>16</b>	<b>20</b>	<b>15</b>	<b>14</b>	<b>15</b>	<b>22</b>	<b>30</b>	<b>44</b>	<b>38</b>	<b>43</b>
PHY1 Physical Science	13	12	20	15	14	15	21	13	16	15	17
PHY3 Physical Science (Bio Med Engineering)	-	-	-	-	-	-	1	8	17	15	17
PHY4 Physical Science (Pre Engineering)	-	-	-	-	-	-	-	9	11	8	9
PHYX Physical Science - Self Pace <sup>3</sup>	3	4	-	-	-	-	-	-	-	-	-
<b>PHYSICS COMBINED</b>	<b>6</b>	<b>12</b>	<b>14</b>	<b>15</b>	<b>22</b>	<b>22</b>	<b>29</b>	<b>27</b>	<b>27</b>	<b>33</b>	<b>31</b>
PHY Physics	4	11	11	13	18	17	24	23	25	31	28
PHY2 Physics 7-12 <sup>2</sup>	1	0	0	0	1	1	-	-	-	-	-
PHYS Physics - Self Pace <sup>3</sup>	0	1	1	1	-	-	-	-	-	-	-
MTH3 Mathematical Physics	1	0	2	1	3	4	5	4	2	2	3
<b>SOCIOLOGY COMBINED</b>	<b>53</b>	<b>65</b>	<b>51</b>	<b>58</b>	<b>66</b>	<b>57</b>	<b>62</b>	<b>74</b>	<b>79</b>	<b>85</b>	<b>74</b>
SOC Sociology	48	63	51	58	66	57	62	74	77	80	69
SOC1 Sociology Social Studies 7-12 <sup>2</sup>	5	2	-	-	-	-	-	-	-	-	-
SOC3 BA/Sociology/MA/Criminology&Just	-	-	-	-	-	-	-	-	2	5	5
<b>SPANISH COMBINED</b>	<b>21</b>	<b>16</b>	<b>10</b>	<b>20</b>	<b>18</b>	<b>17</b>	<b>24</b>	<b>20</b>	<b>21</b>	<b>25</b>	<b>24</b>
SPA Spanish	12	11	9	18	18	17	24	20	21	25	24
SPA1 Spanish 7-12 <sup>2</sup>	9	5	1	2	-	-	-	-	-	-	-
<b>SPEECH COMBINED</b>	<b>92</b>	<b>92</b>	<b>107</b>	<b>107</b>	<b>126</b>	<b>142</b>	<b>153</b>	<b>118</b>	<b>122</b>	<b>121</b>	<b>121</b>
SPE Speech Pathology & Audiology	87	87	101	103	122	137	147	113	115	112	109
SPE1 Speech(Public Add.,Gen.Speech)	5	5	5	4	4	5	6	5	6	9	12
SPE2 Speech	0	0	1	0	0	0	0	0	1	0	0
<b>OTHER PROGRAMS</b>											
ANT Anthropology	6	5	7	9	5	6	16	22	20	30	34
ASC Asian Studies	4	2	7	10	13	14	17	14	10	23	23
PSY Psychology	421	468	483	503	500	503	541	513	519	577	603
THE Theology	18	19	22	19	21	22	23	16	18	18	18
0000 Undeclared	425	429	483	553	560	674	602	626	670	668	609
NM Non-Matric	56	37	39	45	38	70	43	46	68	70	108
<b>TOTAL:</b>	<b>2,387</b>	<b>2,397</b>	<b>2,555</b>	<b>2,716</b>	<b>2,761</b>	<b>2,999</b>	<b>3,024</b>	<b>3,004</b>	<b>3,186</b>	<b>3,395</b>	<b>3,436</b>
<b>PERCENT CHANGE:</b>		<b>0.4%</b>	<b>6.6%</b>	<b>6.3%</b>	<b>1.7%</b>	<b>8.6%</b>	<b>0.8%</b>	<b>-0.7%</b>	<b>6.1%</b>	<b>6.6%</b>	<b>1.2%</b>

<sup>2</sup> No longer offered

<sup>3</sup> Not a program

Prepared by: Office of Institutional Research (cmg,mw)

Based on data as of 10/12/2010



St. John's College of Liberal Arts and Sciences (51)  
 Staten Island Campus - Undergraduate  
 Fall 2000 - Fall 2010

PROGRAM	2000	2001	2002	2003	2004	2005	2006	2007	2008	2009	2010
<b>COMPUTER SCIENCE COMBINED</b>	<b>112</b>	<b>104</b>	<b>78</b>	<b>52</b>	<b>25</b>	<b>14</b>	<b>22</b>	<b>16</b>	<b>17</b>	<b>18</b>	<b>19</b>
CUS Computer Science	110	104	78	52	25	14	22	16	17	18	19
CUS2 Computer Science Business Option	2	-	-	-	-	-	-	-	-	-	-
<b>ENGLISH COMBINED</b>	<b>46</b>	<b>45</b>	<b>42</b>	<b>52</b>	<b>50</b>	<b>43</b>	<b>49</b>	<b>41</b>	<b>32</b>	<b>30</b>	<b>28</b>
ENG English	34	39	40	52	49	43	49	41	32	30	28
ENG1 English 7-12 <sup>2</sup>	12	6	2	0	1	-	-	-	-	-	-
<b>MATHEMATICS COMBINED</b>	<b>21</b>	<b>14</b>	<b>11</b>	<b>4</b>	<b>7</b>	<b>6</b>	<b>4</b>	<b>5</b>	<b>4</b>	<b>3</b>	<b>4</b>
MTH Mathematics	11	5	7	4	6	6	4	5	4	3	4
MTH1 Mathematics 7-12 <sup>2</sup>	10	9	4	0	1	-	-	-	-	-	-
<b>PHILOSOPHY COMBINED</b>	<b>3</b>	<b>2</b>	<b>4</b>	<b>1</b>	<b>1</b>	<b>2</b>	<b>2</b>	<b>0</b>	<b>1</b>	<b>1</b>	<b>1</b>
PHI Philosophy	2	1	4	1	1	2	2	0	1	1	1
PHI1 Philosophy - Theology	1	1	-	-	-	-	-	-	-	-	-
<b>SOCIOLOGY/SOCIAL STUDIES COMBINED</b>	<b>14</b>	<b>12</b>	<b>10</b>	<b>4</b>	<b>17</b>	<b>19</b>	<b>22</b>	<b>16</b>	<b>23</b>	<b>15</b>	<b>11</b>
SOC Sociology	7	8	7	1	10	9	10	11	10	6	6
SST Social Studies	0	1	2	3	6	9	12	5	13	9	5
SST1 Social Studies 7-12 <sup>2</sup>	7	3	1	0	1	1	-	-	-	-	-
<b>SPEECH COMBINED</b>	<b>53</b>	<b>42</b>	<b>39</b>	<b>36</b>	<b>30</b>	<b>30</b>	<b>44</b>	<b>53</b>	<b>55</b>	<b>64</b>	<b>63</b>
SPE Speech Pathology & Audiology	48	40	38	36	30	30	44	53	55	64	63
SPE2 Speech	5	2	1	-	-	-	-	-	-	-	-
<b>OTHER PROGRAMS</b>											
ECO Economics	0	0	0	1	0	0	0	3	2	0	1
GOV Government & Politics	18	23	27	23	20	25	25	21	24	23	20
HIS History	9	10	12	11	12	14	19	23	21	15	16
LAS Liberal Arts	153	162	153	144	130	97	44	17	8	6	6
NUR Nursing <sup>2,9</sup>	39	24	41	8	-	-	-	-	-	-	-
PSC Political Science <sup>2</sup>	9	6	-	-	-	-	-	-	-	-	-
PSY Psychology	83	73	73	85	75	85	75	79	97	100	86
THE Theology	0	1	1	2	4	3	3	3	4	4	2
0000 Undeclared	145	140	154	135	105	91	78	81	91	76	47
NM Non-Matric	0	0	1	1	0	1	15	2	0	1	1
<b>TOTAL</b>	<b>705</b>	<b>658</b>	<b>646</b>	<b>559</b>	<b>476</b>	<b>430</b>	<b>402</b>	<b>360</b>	<b>379</b>	<b>356</b>	<b>305</b>
<b>PERCENTAGE CHANGE</b>		<b>-6.7%</b>	<b>-1.8%</b>	<b>-13.5%</b>	<b>-14.8%</b>	<b>-9.7%</b>	<b>-6.5%</b>	<b>-10.4%</b>	<b>5.3%</b>	<b>-6.1%</b>	<b>-14.3%</b>

<sup>2</sup> No longer offered

<sup>9</sup> In affiliation with St. Vincent's Catholic Medical Centers of New York.



St. John's College of Liberal Arts and Sciences (21)  
 Student Enrollment - Graduate Division  
 Queens Campus  
 Fall 2000 - Fall 2010

PROGRAM	2000	2001	2002	2003	2004	2005	2006	2007	2008	2009	2010	
<b>ASIAN STUDIES COMBINED</b>	<b>19</b>	<b>13</b>	<b>15</b>	<b>14</b>	<b>10</b>	<b>13</b>	<b>13</b>	<b>11</b>	<b>11</b>	<b>14</b>	<b>14</b>	
ASC Asian Studies	-	-	-	-	1	-	-	-	-	-	-	
CHS Chinese Studies	10	6	5	2	1	4	2	1	2	3	2	
AAS Asian & African Cultural Studies	-	-	-	-	-	-	-	-	-	1	1	
EAS East Asian Studies	9	7	10	12	8	9	11	10	9	10	11	
<b>AUDIOLOGY &amp; SPEECH COMBINED</b>	<b>125</b>	<b>127</b>	<b>127</b>	<b>139</b>	<b>164</b>	<b>153</b>	<b>136</b>	<b>158</b>	<b>158</b>	<b>153</b>	<b>152</b>	
AUD Audiology	-	-	-	-	-	4	7	12	36	34	33	
SPE Speech Pathology & Audiology	125	127	127	139	164	149	129	146	122	119	16	
SPE5 Speech Pathology	-	-	-	-	-	-	-	-	-	-	103	
<b>BIOLOGY COMBINED</b>	<b>51</b>	<b>50</b>	<b>48</b>	<b>50</b>	<b>52</b>	<b>46</b>	<b>46</b>	<b>44</b>	<b>40</b>	<b>34</b>	<b>38</b>	
BIO Biology												
	MS	24	21	16	14	16	10	16	10	10	11	14
	NM	2	2	2	1	3	5	1	4	1	1	0
	Ph.D.	25	27	30	35	33	31	29	30	29	22	24
<b>ENGLISH COMBINED</b>	<b>43</b>	<b>46</b>	<b>43</b>	<b>42</b>	<b>54</b>	<b>51</b>	<b>60</b>	<b>73</b>	<b>73</b>	<b>80</b>	<b>81</b>	
ENG English												
	MA & NM	19	23	25	20	27	24	26	35	23	27	27
	DA	24	23	18	22	27	27	34	38	50	53	54
<b>GOVERNMENT COMBINED</b>	<b>76</b>	<b>74</b>	<b>62</b>	<b>59</b>	<b>60</b>	<b>69</b>	<b>66</b>	<b>55</b>	<b>53</b>	<b>65</b>	<b>61</b>	
GOV Government & Politics	75	73	61	58	59	69	65	55	53	64	60	
GOV3 Govt & Politics/Library Sci	1	1	1	1	1	0	1	0	0	1	1	
<b>HISTORY COMBINED</b>	<b>56</b>	<b>45</b>	<b>51</b>	<b>51</b>	<b>50</b>	<b>49</b>	<b>52</b>	<b>49</b>	<b>51</b>	<b>47</b>	<b>52</b>	
HIS History	27	18	19	19	22	18	25	23	17	15	17	
HIS2 Modern World History	29	27	32	32	28	31	27	26	34	32	35	
<b>LIBRARY SCIENCE COMBINED</b>	<b>86</b>	<b>74</b>	<b>106</b>	<b>116</b>	<b>94</b>	<b>90</b>	<b>92</b>	<b>105</b>	<b>143</b>	<b>187</b>	<b>136</b>	
LIS Library Science	83	73	105	116	93	90	90	104	143	184	134	
LIS1 Library & Information Studies	3	1	1	0	1	0	2	1	0	3	2	
<b>PSYCHOLOGY COMBINED</b>	<b>227</b>	<b>255</b>	<b>255</b>	<b>261</b>	<b>274</b>	<b>291</b>	<b>263</b>	<b>254</b>	<b>260</b>	<b>269</b>	<b>252</b>	
PSY1 Gen-Exper Psychology	14	12	19	21	26	26	21	17	15	19	23	
PSY2 Clinical Psy-General Track	46	51	47	45	40	37	34	35	35	35	38	
PSY3 Clinical Psy-Clin Child Track	51	50	47	46	39	39	35	29	32	32	28	
PSY5 School Psychology	47	40	26	29	45	54	44	51	52	64	60	
PSY5 School Psychology	Psy.D	54	82	90	90	94	101	99	94	90	86	60
PSY6 School Psychology/Bilingual Ext	8	9	7	5	7	9	8	9	11	9	5	
PSY6 School Psychology/Bilingual Ext	Psy.D	7	11	19	25	23	22	19	25	24	38	
<b>THEOLOGY COMBINED</b>	<b>45</b>	<b>55</b>	<b>56</b>	<b>59</b>	<b>68</b>	<b>64</b>	<b>55</b>	<b>51</b>	<b>40</b>	<b>38</b>	<b>37</b>	
THE Theology	42	50	52	55	66	62	50	49	39	38	37	
THE2 Theo Catechetical Ministry	3	5	4	4	2	2	5	2	1	0	0	

Note: Queens figures include Distance Learning and Oakdale Students. Please refer to the Distance Learning and Oakdale Enrollment Reports.



**St. John's College of Liberal Arts and Sciences (21)  
Student Enrollment - Graduate Division  
Queens Campus  
Fall 2000 - Fall 2010**

PROGRAM		2000	2001	2002	2003	2004	2005	2006	2007	2008	2009	2010
<b>OTHER PROGRAMS</b>												
CHE	Chemistry	17	15	19	17	23	33	35	27	21	24	28
CRIM	Criminology and Justice	-	-	13	29	33	37	38	39	30	29	39
GDSJ	Global Dev & Social Justice	-	-	-	-	-	-	-	-	-	32	36
LAC	Latin American and Caribbean Studies	0	0	1	1	2	3	2	0	3	0	
LST	Liberal Studies	16	20	13	15	15	12	31	60	55	24	14
MTH	Mathematics	4	7	6	8	7	10	15	12	8	5	7
MIN	Ministerial Studies	6	8	7	7	4	4	5	4	4	2	2
PAS	Pastoral Ministry	1	1	-	-	-	-	-	-	-	-	-
SOC	Sociology	29	23	25	17	22	21	33	38	29	35	31
SPA	Spanish	15	14	15	14	22	21	19	16	9	9	15
0000	Undeclared	-	-	-	-	1	-	-	-	-	-	-
NM	Non-Matric	29	37	30	60	9	6	34	20	67	71	84
<b>TOTAL QUEENS:</b>		<b>845</b>	<b>864</b>	<b>892</b>	<b>959</b>	<b>964</b>	<b>973</b>	<b>995</b>	<b>1,016</b>	<b>1,055</b>	<b>1,118</b>	<b>1,079</b>
<b>PERCENT CHANGE:</b>			<b>2.2%</b>	<b>3.2%</b>	<b>7.5%</b>	<b>0.5%</b>	<b>0.9%</b>	<b>2.3%</b>	<b>2.1%</b>	<b>3.8%</b>	<b>6.0%</b>	<b>-3.5%</b>

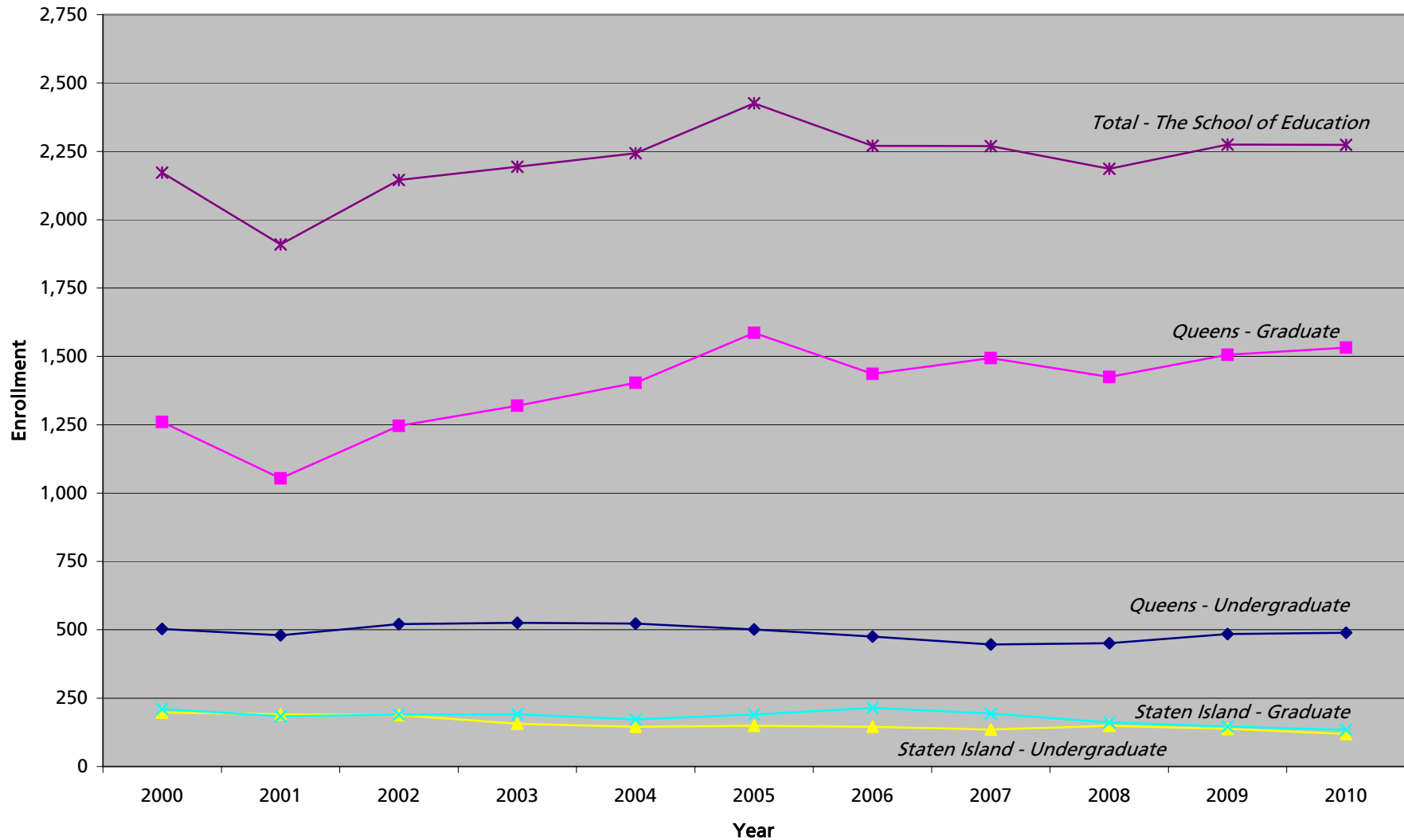
**Rome Campus**

PROGRAM		2000	2001	2002	2003	2004	2005	2006	2007	2008	2009	2009
GOV	Government & Politics	32	37	46	56	55	66	64	43	46	45	47
NM	Non-Matric	-	1	-	2	1	1	1	0	1	0	-
<b>TOTAL ROME:</b>		<b>32</b>	<b>38</b>	<b>46</b>	<b>58</b>	<b>56</b>	<b>67</b>	<b>65</b>	<b>43</b>	<b>47</b>	<b>45</b>	<b>47</b>
<b>PERCENT CHANGE:</b>			<b>18.8%</b>	<b>21.1%</b>	<b>26.1%</b>	<b>-3.4%</b>	<b>19.6%</b>	<b>-3.0%</b>	<b>-33.8%</b>	<b>9.3%</b>	<b>-4.3%</b>	<b>4.4%</b>
<b>QUEENS &amp; ROME TOTAL:</b>		<b>877</b>	<b>902</b>	<b>938</b>	<b>1,017</b>	<b>1,020</b>	<b>1,040</b>	<b>1,060</b>	<b>1,059</b>	<b>1,102</b>	<b>1,163</b>	<b>1,126</b>
<b>PERCENT CHANGE:</b>			<b>2.9%</b>	<b>4.0%</b>	<b>8.4%</b>	<b>0.3%</b>	<b>2.0%</b>	<b>1.9%</b>	<b>-0.1%</b>	<b>4.1%</b>	<b>5.5%</b>	<b>-3.2%</b>

*Notes: Queens figures include Distance Learning and Oakdale Students. Please refer to the Distance Learning and Oakdale Enrollment Reports.*



# The School of Education Student Enrollment Fall 2000 - Fall 2010







The School of Education - (12)  
 Student Enrollment - Undergraduate Division  
 Queens Campus  
 Fall 2000 - Fall 2010

PROGRAM	2000	2001	2002	2003	2004	2005	2006	2007	2008	2009	2010
<b>EDUCATION PRE K-6/CHILDHOOD COMBINED</b>	<b>421</b>	<b>414</b>	<b>414</b>	<b>384</b>	<b>363</b>	<b>346</b>	<b>318</b>	<b>278</b>	<b>272</b>	<b>289</b>	<b>289</b>
EDU Elementary Edu Grades Pre K-6 <sup>2</sup>	376	296	196	72	-	-	-	-	-	-	-
EDU1 Elem Ed Pre K-6 & Bil Ed K-6 <sup>2</sup>	2	-	-	-	-	-	-	-	-	-	-
EDU2 Elem Ed Pre K-6 & Sp Ed K-6 <sup>2</sup>	43	25	17	5	-	-	-	-	-	-	-
EDUD Elem Ed/Spec Ed (PreK-6); Dual Cert. <sup>2</sup>	0	1	1	1	-	-	-	-	-	-	-
CED Childhood Education 1-6	-	82	182	275	321	309	283	234	198	208	206
CEDS Childhood Edu & Special Edu 1-6	-	10	18	31	41	35	35	44	74	81	83
CHD Childhood Edu - Non Cert	-	-	-	-	1	2	-	-	-	-	-
<b>EDU PRE K-6 &amp; 7-9/ ADOLESCENCE COMBINED</b>	<b>31</b>	<b>57</b>	<b>106</b>	<b>139</b>	<b>159</b>	<b>155</b>	<b>157</b>	<b>168</b>	<b>179</b>	<b>196</b>	<b>200</b>
EDUE Elem Ed Pre K-6 & 7-9 English <sup>2</sup>	7	7	4	1	-	-	-	-	-	-	-
EDUG Elem Ed Pre K-6 & 7-9 Gen Sci <sup>2</sup>	3	2	1	1	-	-	-	-	-	-	-
EDUH Elem Ed Pre K-6 & 7-9 S.S. <sup>2</sup>	8	6	2	1	-	-	-	-	-	-	-
EDUI Elem Ed Pre K-6 & 7-9 Italian <sup>2</sup>	1	1	0	0	-	-	-	-	-	-	-
EDUM Elem Ed Pre K-6 & 7-9 Math <sup>2</sup>	9	5	3	1	-	-	-	-	-	-	-
EDUS Elem Ed Pre K-6 & 7-9 Span <sup>2</sup>	3	3	1	1	-	-	-	-	-	-	-
AEB Adolescence Edu/Biology	-	-	-	-	-	-	4	10	14	21	18
AEE Adolescence Edu/English	-	4	22	42	45	46	45	44	42	47	57
AEM Adolescence Edu/Mathematics	-	13	24	31	47	48	44	39	41	45	42
AEP Adolescence Edu/Physics	-	0	5	8	9	7	8	5	8	4	8
AESP Adolescence Edu/Spanish	-	2	8	7	8	9	8	12	17	14	13
AESS Adolescence Edu/Social Studies	-	14	36	46	50	45	48	58	56	65	62
<b>HEARING HANDICAP COMBINED</b>	<b>7</b>	<b>3</b>	<b>-</b>	<b>-</b>	<b>-</b>	<b>-</b>	<b>-</b>	<b>-</b>	<b>-</b>	<b>-</b>	<b>-</b>
EDU5 Teach Of Spe&Hear Handspe Path <sup>2</sup>	7	3	-	-	-	-	-	-	-	-	-
<b>OTHER PROGRAMS</b>											
EDU3 Art Education K-12 <sup>2</sup>	9	6	1	2	-	-	-	-	-	-	-
0000 Undeclared	0	-	-	-	1	-	-	-	-	-	-
NM Non-Matric	0	-	-	1	-	-	-	-	-	-	-
<b>TOTAL:</b>	<b>503</b>	<b>480</b>	<b>521</b>	<b>526</b>	<b>523</b>	<b>501</b>	<b>475</b>	<b>446</b>	<b>451</b>	<b>485</b>	<b>489</b>
<b>PERCENT CHANGE:</b>		<b>-4.6%</b>	<b>8.5%</b>	<b>1.0%</b>	<b>-0.6%</b>	<b>-4.2%</b>	<b>-5.2%</b>	<b>-6.1%</b>	<b>1.1%</b>	<b>7.5%</b>	<b>0.8%</b>

Note: Beginning in Fall 2001, students majoring in Elementary Education Pre K-6 are coded as Childhood Education majors.  
 Students majoring in Elementary Education Pre K-6 and 7-9 are coded as Adolescence Education majors.

<sup>2</sup> No longer offered

<sup>8</sup> Now in the College of Professional Studies

Prepared by: Office of Institutional Research (cmg,mw)

Based on data as of 10/12/2010



The School of Education (62)  
 Staten Island Campus  
 Fall 2000- Fall 2010

PROGRAM	2000	2001	2002	2003	2004	2005	2006	2007	2008	2009	2010
<b>ADOLESCENCE COMBINED</b>		<b>9</b>	<b>24</b>	<b>33</b>	<b>30</b>	<b>31</b>	<b>34</b>	<b>31</b>	<b>33</b>	<b>35</b>	<b>26</b>
AEE Adolescence Edu/English	-	3	9	16	9	6	11	10	16	16	11
AEM Adolescence Edu/Mathematics	-	3	5	8	10	9	11	9	8	9	10
AESS Adolescence Edu/Social Studies	-	3	10	9	11	16	11	12	9	10	5
ADE Adolescence Ed - Non Cert.	-	-	-	-	-	-	1	-	-	-	-
<b>EDUCATION PRE K-6/CHILDHOOD COMBINED</b>	<b>198</b>	<b>182</b>	<b>164</b>	<b>124</b>	<b>115</b>	<b>118</b>	<b>111</b>	<b>104</b>	<b>116</b>	<b>103</b>	<b>93</b>
EDU Elementary Edu Grades Pre K-6 <sup>2,10</sup>	164	89	54	5	-	-	-	-	-	-	-
EDUD Elem Ed & Special Ed K-6 <sup>2,10</sup>	34	28	15	-	-	-	-	-	-	-	-
CED Childhood Education 1-6	-	61	89	107	101	96	95	89	102	91	79
CEDS Childhood Edu & Spec Edu 1-6	-	4	6	12	13	20	16	13	14	12	14
CHD Childhood Edu - Non Cert	-	-	-	-	1	2	-	2	-	-	-
<b>SUBTOTAL</b>	<b>198</b>	<b>191</b>	<b>188</b>	<b>157</b>	<b>145</b>	<b>149</b>	<b>145</b>	<b>135</b>	<b>149</b>	<b>138</b>	<b>119</b>
<b>PERCENTAGE CHANGE</b>		<b>-3.5%</b>	<b>-1.6%</b>	<b>-16.5%</b>	<b>-7.6%</b>	<b>2.8%</b>	<b>-2.7%</b>	<b>-6.9%</b>	<b>10.4%</b>	<b>-7.4%</b>	<b>-13.8%</b>

<sup>2</sup> No longer offered

<sup>10</sup> Beginning in Fall 2001, entering students majoring in Elementary Education Pre K-6 are coded as Childhood Education majors.



The School of Education (32)  
 Student Enrollment - Graduate Division  
 Queens Campus  
 Fall 2000 - Fall 2010

PROGRAM	2000	2001	2002	2003	2004	2005	2006	2007	2008	2009	2010
<b>CHILDHOOD/ELEM. EDUCATION COMBINED</b>	<b>261</b>	<b>273</b>	<b>319</b>	<b>349</b>	<b>277</b>	<b>242</b>	<b>227</b>	<b>224</b>	<b>275</b>	<b>347</b>	<b>293</b>
EDU Elementary Education Pre K-6	261	273	237	148	98	94	65	16	35	1	1
CEC Childhood Education: Career	-	-	26	84	118	115	112	109	110	119	108
CED Childhood Education 1-6	-	-	0	0	0	0	0	1	4	56	8
CEF Childhood Education: Field	-	-	6	13	9	10	7	6	4	2	-
CHL Childhood Education Teaching Fellow	-	-	50	104	45	-	-	-	-	-	-
CSPE Childhood & Childhood Spec Edu	-	-	-	-	3	14	28	63	86	123	129
CTES Childhood Education & TESOL	-	-	-	-	4	9	15	29	36	46	47
<b>EARLY CHILDHOOD ED. COMBINED</b>	<b>-</b>	<b>-</b>	<b>15</b>	<b>46</b>	<b>67</b>	<b>68</b>	<b>62</b>	<b>49</b>	<b>40</b>	<b>41</b>	<b>44</b>
ECC Early Childhood Edu: Career	-	-	8	28	48	55	48	39	32	29	18
ECF Early Childhood Edu: Field	-	-	7	18	19	13	14	10	8	12	8
ECTD Early Child B-2 & Teac Dis B-2	-	-	-	-	-	-	-	-	-	-	18
<b>ED ADMIN &amp; SUPERVISION / SBL COMBINED</b>	<b>143</b>	<b>155</b>	<b>156</b>	<b>191</b>	<b>259</b>	<b>435</b>	<b>414</b>	<b>316</b>	<b>287</b>	<b>249</b>	<b>252</b>
EDAS Edu Admin & Supervsn (EDD,PD,ADVCR)	98	91	127	163	209	181	152	129	95	95	91
EDAS Ed Admin & Supervision (MSED, NM)	45	64	29	28	50	47	2	1	-	-	-
SBL School Building Leadership	-	-	-	-	-	206	258	185	147	112	108
SBDL School Building/School District Leadership	-	-	-	-	-	-	-	-	40	38	44
SDL School District Leadership	-	-	-	-	-	1	2	1	5	4	9
<b>READING/LITERACY COMBINED</b>	<b>224</b>	<b>197</b>	<b>173</b>	<b>143</b>	<b>108</b>	<b>88</b>	<b>74</b>	<b>54</b>	<b>68</b>	<b>75</b>	<b>106</b>
EDU4 Reading/Special Education <sup>2</sup>	37	18	10	1	-	-	-	-	-	-	-
RDS Reading Specialist <sup>2</sup>	187	179	133	64	0	2	-	-	-	-	-
LTC Teaching Literacy B-12	-	-	-	-	-	-	-	4	3	3	3
LTC1 Literacy (Ph.D.)	-	-	-	-	-	-	-	-	14	10	22
LTCB Literacy Birth-6	-	-	25	74	101	75	63	44	43	45	41
LTCB5 Literacy 5-12	-	-	5	0	0	0	0	0	0	0	0
LTC2 Teaching Literacy Grades 5-12	-	-	-	-	-	-	-	-	-	-	2
LTC3 Teaching Literacy Birth-6	-	-	-	-	-	-	-	-	-	5	4
LTC4 Teach Lit B-6 & Tch Child w/Dis	-	-	-	-	-	-	-	-	-	5	17
LTC5 Literacy 5-12	-	-	-	4	7	11	11	6	8	7	11
LTC7 Teach Lit B-6 & TESOL K-12	-	-	-	-	-	-	-	-	-	-	6
<b>SCHOOL COUNSELOR COMBINED</b>	<b>126</b>	<b>101</b>	<b>124</b>	<b>116</b>	<b>94</b>	<b>90</b>	<b>75</b>	<b>89</b>	<b>90</b>	<b>103</b>	<b>102</b>
EDU8 School Counselor with Bili Ext	36	29	27	22	17	22	15	19	14	17	19
SHC School Counselor	90	72	97	94	77	68	60	70	76	86	83
<b>SECONDARY/ADOLESCENCE EDUCATION COMB.</b>	<b>225</b>	<b>103</b>	<b>162</b>	<b>238</b>	<b>311</b>	<b>309</b>	<b>309</b>	<b>312</b>	<b>290</b>	<b>275</b>	<b>248</b>
BIO Biology <sup>2</sup>	34	10	30	5	5	-	-	-	-	-	-
AEB Adolescence Edu/Biology	-	-	-	-	-	1	1	0	0	1	2
ENG1 English 7-12 <sup>2</sup>	58	21	29	8	1	-	-	-	-	-	-
AEE Adolescence Edu/English	-	-	-	-	1	7	6	8	5	9	6
MTH1 Mathematics 7-12 <sup>2</sup>	90	23	20	10	3	1	-	-	-	-	-
AEM Adolescence Edu/Mathematics	-	-	-	-	-	6	3	1	1	3	5
SPA1 Spanish 7-12 <sup>2</sup>	5	9	4	4	1	-	-	-	-	-	-
AESP Adolescence Edu/Spanish	-	-	-	-	-	2	1	1	1	2	2
SST1 Social Studies 7-12 <sup>2</sup>	33	34	30	10	7	1	-	-	-	-	-
AESS Adolescence Edu/Social Studies	-	-	-	-	6	7	5	7	3	4	4
CHE1 Chemistry 7-12 <sup>2</sup>	4	4	3	1	-	-	-	-	-	-	-
FRE1 French 7-12 <sup>2</sup>	1	1	-	-	-	-	-	-	-	-	-
PHY2 Physics Education 7-12 <sup>2</sup>	0	1	1	-	-	-	-	-	-	-	-
AEC Adolescence Education: Career	-	-	19	93	155	146	135	132	132	165	162
AEET Adolescence Edu: Eng 7-12 (TF)	-	-	-	-	-	-	20	48	38	14	-
AEF Adolescence Education: Field	-	-	5	27	23	17	10	9	5	2	2
AMC Alt. Cert.-Adol Math 7-12 (TF)	-	-	-	-	106	44	128	51	105	75	28
AMSP Adolescent Math Special Edu	-	-	-	-	-	-	-	-	-	-	37
MDM Alter Cert.Child Ed MID Math	-	-	21	80	3	77	-	55	-	-	-

Note: Figures include Distance Learning and Oakdale Students. Please refer to the Distance Learning and Oakdale Enrollment Reports.



The School of Education (32)  
 Student Enrollment - Graduate Division  
 Queens Campus  
 Fall 2000 - Fall 2010

PROGRAM	2000	2001	2002	2003	2004	2005	2006	2007	2008	2009	2010
<b>SPECIAL EDUCATION COMBINED</b>	<b>85</b>	<b>60</b>	<b>63</b>	<b>57</b>	<b>79</b>	<b>73</b>	<b>42</b>	<b>32</b>	<b>33</b>	<b>29</b>	<b>27</b>
EDSP Special Education	56	41	33	17	1	-	-	-	-	-	-
EDU7 Special Ed With Bilingual Ext	29	19	14	3	0	0	0	3	-	-	-
TCD Teach Child with DIS Childhood	-	-	16	18	33	45	41	28	33	29	27
TFD Teach Fellow: Child Disabilities	-	-	-	19	45	28	1	1	-	-	-
<b>BILINGUAL EDUCATION COMBINED</b>	<b>30</b>	<b>14</b>	<b>21</b>	<b>4</b>	<b>12</b>	<b>13</b>	<b>19</b>	<b>22</b>	<b>4</b>	<b>47</b>	<b>61</b>
BIL Bilingual Extension	-	-	-	-	-	-	-	-	1	3	7
BIL1 Bilingual Ed: ITI	-	-	-	-	-	-	-	-	-	34	47
BIL2 Bilingual Special Ed: ITI	-	-	-	-	-	-	-	-	-	6	7
BIL3 Bilingual Pupil Person Ser: ITI	-	-	-	-	-	-	-	-	-	1	-
EDU9 Bilingual/Multicultural Edu	30	14	21	4	12	13	19	22	3	3	-
<b>TESOL COMBINED</b>	<b>32</b>	<b>33</b>	<b>81</b>	<b>36</b>	<b>62</b>	<b>133</b>	<b>93</b>	<b>82</b>	<b>75</b>	<b>112</b>	<b>129</b>
TES Tesol	32	33	81	36	62	133	93	82	75	100	103
TES1 TESOL: ITI	-	-	-	-	-	-	-	-	-	12	22
TES2 TESOL Special Ed: IT	-	-	-	-	-	-	-	-	-	-	4
<b>OTHER PROGRAMS</b>											
ADS Administrative Studies	-	-	-	-	-	-	-	-	-	-	1
EDGT Gifted Education	-	-	-	-	-	-	-	-	-	8	8
EDU6 Student Dev Prac Higher ED <sup>2</sup>	38	39	40	42	25	18	6	1	-	-	-
INL Instructional Leadership	73	67	74	79	87	94	95	83	82	94	125
MCE5 Middle Childhood 5-6 Extension	-	-	-	-	-	-	-	-	-	-	4
MCE7 Middle Childhood 7-9 Extension	-	-	-	-	-	-	-	-	-	-	3
MHC Mental Health Counseling <sup>11</sup>	17	9	16	15	22	19	10	5	15	34	49
NM Non-Matric	6	3	2	4	0	4	10	225	166	92	80
<b>TOTAL:</b>	<b>1,260</b>	<b>1,054</b>	<b>1,246</b>	<b>1,320</b>	<b>1,403</b>	<b>1,586</b>	<b>1,436</b>	<b>1,494</b>	<b>1,425</b>	<b>1,506</b>	<b>1,532</b>
<b>PERCENT CHANGE:</b>		<b>-16.3%</b>	<b>18.2%</b>	<b>5.9%</b>	<b>6.3%</b>	<b>13.0%</b>	<b>-9.5%</b>	<b>4.0%</b>	<b>-4.6%</b>	<b>5.7%</b>	<b>1.7%</b>

<sup>2</sup> No longer offered

<sup>11</sup> Prior to 2008, was known as Rehabilitation Counseling

Note: Figures include Distance Learning and Oakdale Students. Please refer to the Distance Learning and Oakdale Enrollment Reports.



The School of Education (82)  
 Student Enrollment - Graduate Division  
 Staten Island Campus  
 Fall 2000 - Fall 2010

PROGRAM	2000	2001	2002	2003	2004	2005	2006	2007	2008	2009	2010
<b>CHILDHOOD/ELEMENTARY EDUCATION COMBINED</b>	<b>39</b>	<b>26</b>	<b>42</b>	<b>65</b>	<b>60</b>	<b>63</b>	<b>53</b>	<b>47</b>	<b>49</b>	<b>60</b>	<b>56</b>
EDU Elementary Education Pre K-6	39	26	11	10	5	6	5	6	-	-	-
CEC Childhood Education: Career	-	-	13	54	50	51	44	35	38	36	33
CED Childhood Education 1-6	-	-	18	0	0	2	0	0	4	5	6
CEF Childhood Education: Field	-	-	-	1	3	0	0	0	1	1	2
CHD Childhood Edu - Non Cert	-	-	-	-	-	-	-	-	-	1	-
CHDS Child Edu/Spec Edu - Non Cert	-	-	-	-	-	-	-	-	-	-	1
CSPE Childhood & Childhood Spec Edu	-	-	-	-	2	4	4	6	6	17	14
<b>ED ADMIN &amp; SUPERVISION COMBINED</b>	<b>38</b>	<b>33</b>	<b>31</b>	<b>29</b>	<b>33</b>	<b>57</b>	<b>93</b>	<b>74</b>	<b>45</b>	<b>24</b>	<b>24</b>
EDAS Educational Admin & Supervsn (PD/ADVCRRT)	24	24	19	24	20	10	5	1	-	-	-
EDAS Educational Admin & Supervsn (MSED,NM)	14	9	12	5	13	13	1	-	-	-	-
SBDL Sch Building/Sch Distr Leaders	-	-	-	-	-	-	-	-	-	-	2
SBL School Building Leadership	-	-	-	-	-	34	87	73	45	24	21
SDL School District Leadership	-	-	-	-	-	-	-	-	-	-	1
<b>READING LITERACY COMBINED</b>	<b>48</b>	<b>50</b>	<b>55</b>	<b>57</b>	<b>42</b>	<b>33</b>	<b>28</b>	<b>29</b>	<b>26</b>	<b>12</b>	<b>13</b>
RDS Reading Specialist <sup>2</sup>	47	46	30	11	1	-	-	-	-	-	-
LTC Teaching Literacy B-12	-	-	-	-	-	-	-	-	-	3	4
LTCB Literacy Birth-6	-	-	23	40	37	30	27	28	25	9	8
LTC5 Literacy 5-12	-	-	2	6	4	3	1	1	1	0	1
<b>OTHER PROGRAMS</b>											
MCE5 Middle Childhood 5-6 Extension	-	-	-	-	-	-	-	-	-	-	1
MHC Mental Health Counseling <sup>11</sup>	15	14	11	6	6	5	4	1	1	9	10
SHC School Counselor	33	31	32	33	30	30	28	27	32	34	25
TCD Teach Child with DIS Childhood	-	-	-	-	-	-	-	-	-	4	1
0000 Undeclared	0	3	0	1	1	2	8	-	2	-	-
NM Non-Matric	2	0	0	0	-	-	-	16	6	3	4
<b>TOTAL:</b>	<b>211</b>	<b>184</b>	<b>190</b>	<b>191</b>	<b>172</b>	<b>190</b>	<b>214</b>	<b>194</b>	<b>161</b>	<b>146</b>	<b>134</b>
<b>PERCENT CHANGE:</b>		<b>-12.8%</b>	<b>3.3%</b>	<b>0.5%</b>	<b>-9.9%</b>	<b>10.5%</b>	<b>12.6%</b>	<b>-9.3%</b>	<b>-17.0%</b>	<b>-9.3%</b>	<b>-8.2%</b>

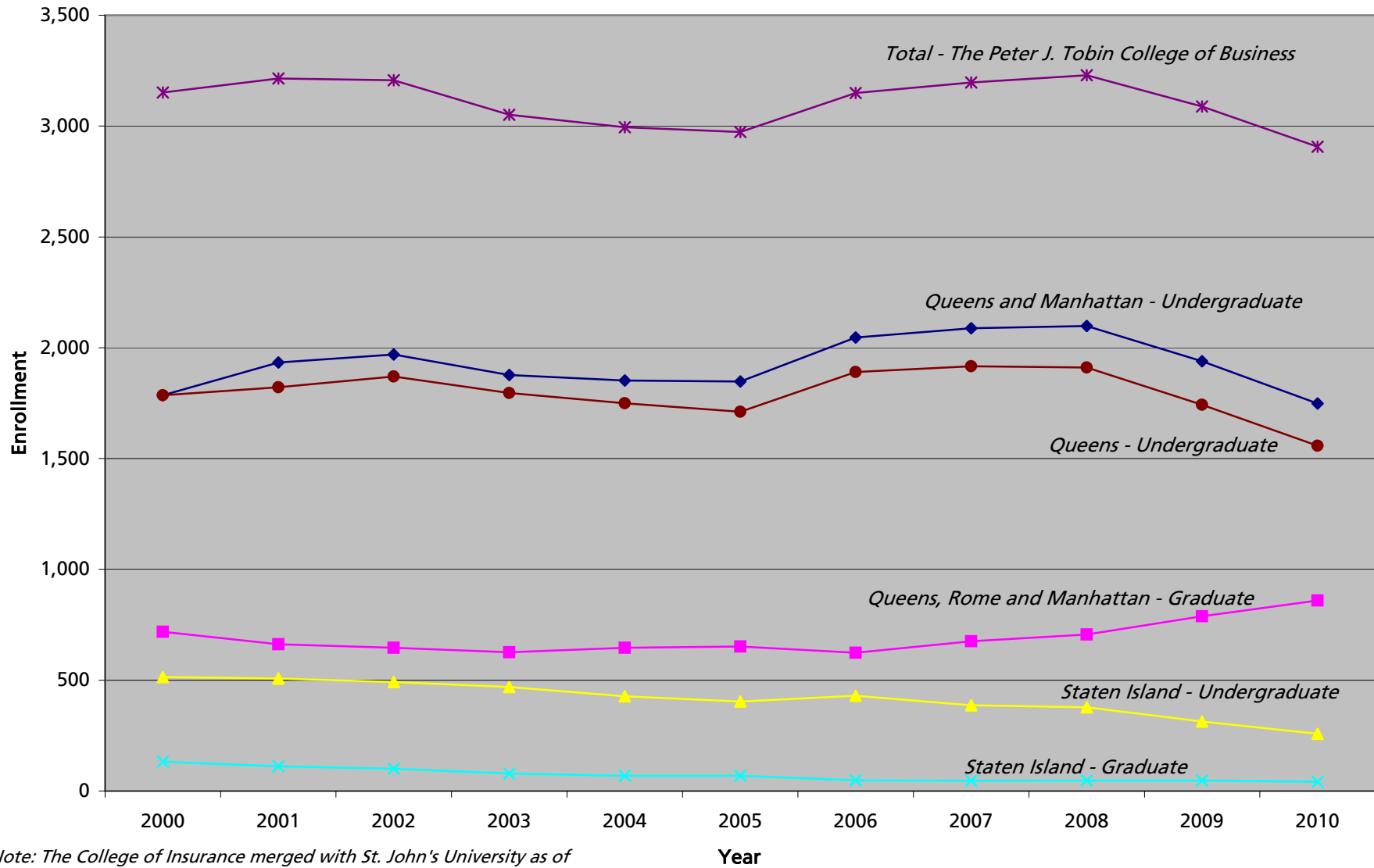
<sup>2</sup> No longer offered

<sup>11</sup> Prior to 2008, was known as Rehabilitation Counseling

Note: Figures include Distance Learning Students. Please refer to the Distance Learning Enrollment Reports.



## The Peter J. Tobin College of Business Student Enrollment Fall 2000 - Fall 2010



Note: The College of Insurance merged with St. John's University as of June 1, 2001 to form the Manhattan campus.



The Peter J. Tobin College of Business (14)  
 Student Enrollment - Undergraduate Division  
 Fall 2000 - Fall 2010

Queens Campus											
PROGRAM	2000	2001	2002	2003	2004	2005	2006	2007	2008	2009	2010
<b>ACCOUNTING COMBINED</b>	<b>381</b>	<b>359</b>	<b>387</b>	<b>384</b>	<b>403</b>	<b>435</b>	<b>488</b>	<b>474</b>	<b>487</b>	<b>499</b>	<b>467</b>
ACC Accounting (BS)	359	331	387	338	365	404	406	421	396	370	368
ACC2 Accounting (BS/MS)	22	28	0	22	11	19	39	39	43	45	53
ACC3 BS/Accounting MS/Tax	-	-	-	24	27	12	43	14	41	65	32
ACCF Accounting/Finance	-	-	-	-	-	-	-	-	5	16	14
ACCM Accounting/Managmnt Info System	-	-	-	-	-	-	-	-	2	3	-
OTHER PROGRAMS											
ECO Economics	42	47	33	37	35	38	39	48	63	74	80
FIN Finance	540	535	525	445	426	400	443	515	560	436	322
MGT Management	312	317	338	352	361	383	410	390	324	307	294
MIS Management Information Systems	0	0	1	3	9	10	15	17	16	16	14
MKT Marketing	264	276	290	281	310	280	269	265	266	252	215
MSC Military Science <sup>4</sup>	18	37	29	16	17	23	28	28	16	26	20
0000 Undeclared	227	247	265	276	186	141	197	179	178	133	144
NM Non-Matric	2	4	2	2	3	1	1	0	1	0	2
<b>TOTAL:</b>	<b>1,786</b>	<b>1,822</b>	<b>1,870</b>	<b>1,796</b>	<b>1,750</b>	<b>1,711</b>	<b>1,890</b>	<b>1,916</b>	<b>1,911</b>	<b>1,743</b>	<b>1,558</b>
<b>PERCENT CHANGE:</b>		<b>2.0%</b>	<b>2.6%</b>	<b>-4.0%</b>	<b>-2.6%</b>	<b>-2.2%</b>	<b>10.5%</b>	<b>1.4%</b>	<b>-0.3%</b>	<b>-8.8%</b>	<b>-10.6%</b>
Manhattan Campus											
PROGRAM	2000	2001	2002	2003	2004	2005	2006	2007	2008	2009	2010
ACT Actuarial Science	-	28	33	42	61	79	101	101	109	110	87
RMI Risk Management and Insurance	-	70	65	39	41	58	55	71	78	86	103
0000 Undeclared	-	12	1	-	-	-	-	-	-	-	-
NM Non-Matric	-	1	-	-	-	-	-	-	-	-	-
<b>TOTAL:</b>		<b>111</b>	<b>99</b>	<b>81</b>	<b>102</b>	<b>137</b>	<b>156</b>	<b>172</b>	<b>187</b>	<b>196</b>	<b>190</b>
			<b>-10.8%</b>	<b>-18.2%</b>	<b>25.9%</b>	<b>34.3%</b>	<b>13.9%</b>	<b>10.3%</b>	<b>8.7%</b>	<b>4.8%</b>	<b>-3.1%</b>
<b>QUEENS &amp; MANHATTAN TOTAL:</b>	<b>1,786</b>	<b>1,933</b>	<b>1,969</b>	<b>1,877</b>	<b>1,852</b>	<b>1,848</b>	<b>2,046</b>	<b>2,088</b>	<b>2,098</b>	<b>1,939</b>	<b>1,748</b>
<b>PERCENT CHANGE:</b>		<b>8.2%</b>	<b>1.9%</b>	<b>-4.7%</b>	<b>-1.3%</b>	<b>-0.2%</b>	<b>10.7%</b>	<b>2.1%</b>	<b>0.5%</b>	<b>-7.6%</b>	<b>-9.9%</b>

Note: The College of Insurance merged with St. John's University as of June 1, 2001 to form the Manhattan campus.

For reference purposes: 246 undergraduate students in fall 2000.



The Peter J. Tobin College of Business (64)  
 Student Enrollment - Undergraduate Division  
 Staten Island Campus  
 Fall 2000 - Fall 2010

PROGRAM	2000	2001	2002	2003	2004	2005	2006	2007	2008	2009	2010
<b>ACCOUNTING COMBINED</b>	<b>126</b>	<b>125</b>	<b>119</b>	<b>112</b>	<b>115</b>	<b>106</b>	<b>125</b>	<b>123</b>	<b>130</b>	<b>131</b>	<b>104</b>
ACC Accounting	126	106	98	106	109	104	117	112	119	117	88
ACC2 Accounting (BS/MS)	0	19	21	6	6	2	8	11	11	14	16
<b>OTHER PROGRAMS</b>											
ECO Economics <sup>2</sup>	2	1	1	-	-	-	-	-	-	-	-
FIN Finance	132	129	136	112	76	72	81	99	124	83	57
MGT Management	93	87	83	89	86	94	87	71	48	43	42
MKT Marketing	39	49	51	54	46	50	59	40	37	31	28
0000 Undeclared	122	117	102	102	105	81	78	54	39	26	27
NM Non-Matric	0	0	0	0	0	1	0	0	0	0	0
<b>TOTAL:</b>	<b>514</b>	<b>508</b>	<b>492</b>	<b>469</b>	<b>428</b>	<b>404</b>	<b>430</b>	<b>387</b>	<b>378</b>	<b>314</b>	<b>258</b>
<b>PERCENT CHANGE:</b>		<b>-1.2%</b>	<b>-3.1%</b>	<b>-4.7%</b>	<b>-8.7%</b>	<b>-5.6%</b>	<b>6.4%</b>	<b>-10.0%</b>	<b>-2.3%</b>	<b>-16.9%</b>	<b>-17.8%</b>

<sup>2</sup> No longer offered





The Peter J. Tobin College of Business (34)  
 Student Enrollment - Graduate Division  
 Queens, Rome, and Manhattan  
 Fall 2000 - Fall 2010

Queens Campus											
PROGRAM	2000	2001	2002	2003	2004	2005	2006	2007	2008	2009	2010
<b>Master in Business Administration (MBA)</b>	<b>610</b>	<b>488</b>	<b>470</b>	<b>456</b>	<b>433</b>	<b>411</b>	<b>352</b>	<b>311</b>	<b>312</b>	<b>335</b>	<b>322</b>
<i>BUS Business Administration</i>	-	-	-	-	-	-	80	192	243	268	274
Computer Info Systems / Decision Science	-	-	-	-	-	-	3	6	8	8	10
Controllership	-	-	-	-	-	-	-	2	1	1	3
Decision Sciences	-	-	-	-	-	-	-	5	3	3	3
Finance	-	-	-	-	-	-	29	76	106	100	89
International Business	-	-	-	-	-	-	13	23	27	37	57
Executive Management	-	-	-	-	-	-	11	24	39	43	32
Marketing	-	-	-	-	-	-	24	55	57	74	79
Taxation	-	-	-	-	-	-	-	1	2	2	1
ACC Accounting	0	0	0	1	-	-	-	-	-	-	-
ACC1 Public Accounting	55	41	37	66	75	74	59	36	43	54	45
ACC2 Accounting BS/MS	0	0	1	-	-	-	-	-	-	-	-
CIS Computer Info Sys/Decision Sci <sup>5</sup>	66	70	33	26	27	25	13	4	-	-	-
CON Controllership	0	0	0	0	0	1	1	-	-	-	-
ECO Economics	4	1	1	-	-	-	-	-	-	-	-
FIN Finance	275	194	209	184	164	137	78	36	10	7	2
INTB International Business	17	18	31	29	24	23	18	5	1	-	-
MGT1 Executive Management	76	81	75	77	65	53	34	20	8	3	-
MKT Marketing	108	78	74	68	75	93	67	16	7	3	1
TAX Taxation	9	5	9	5	3	5	2	2	-	-	-
<b>Master in Science (MS)</b>	<b>30</b>	<b>39</b>	<b>50</b>	<b>60</b>	<b>75</b>	<b>86</b>	<b>83</b>	<b>137</b>	<b>154</b>	<b>207</b>	<b>261</b>
ACC Accounting	-	-	-	19	22	33	38	52	75	123	169
ACC1 Public Accounting	-	-	8	1	-	-	-	-	-	-	-
ACC2 Accounting BS/MS	23	23	18	6	9	7	12	26	25	32	25
FAP Forecasting and Planning	-	2	1	0	0	0	0	0	0	0	0
PSL Purch & Supply Leadership (MS)	2	0	0	0	0	0	0	0	0	0	0
TAX Taxation	5	14	23	34	44	46	33	59	54	52	67
<b>Advanced Certificate (APCRT/ADVCR)</b>	<b>17</b>	<b>9</b>	<b>8</b>	<b>8</b>	<b>11</b>	<b>4</b>	<b>4</b>	<b>1</b>	<b>2</b>	<b>3</b>	<b>2</b>
ACC1 Public Accounting	4	4	4	5	7	2	2	1	1	1	0
CIS Computer Info Sys/Decision Sci <sup>5</sup>	1	0	2	1	0	0	0	0	0	0	0
CON Controllership	-	-	-	-	-	-	1	0	0	0	0
FIN Finance	4	2	1	0	2	1	0	0	0	1	2
INTB International Business	-	-	-	-	-	-	-	-	1	0	0
MGT1 Executive Management	5	2	1	0	0	0	0	0	0	0	0
MKT Marketing	2	1	0	1	1	0	0	0	0	0	0
TAX Taxation	1	0	0	1	1	1	1	0	0	1	0
0000 Undeclared	0	0	0	0	1	0	0	0	0	0	0
NM Non-Matric	15	1	4	2	0	1	1	1	0	0	0
<b>TOTAL QUEENS:</b>	<b>672</b>	<b>537</b>	<b>532</b>	<b>526</b>	<b>520</b>	<b>502</b>	<b>440</b>	<b>450</b>	<b>468</b>	<b>545</b>	<b>585</b>
<b>PERCENT CHANGE:</b>		<b>-20.1%</b>	<b>-0.9%</b>	<b>-1.1%</b>	<b>-1.1%</b>	<b>-3.5%</b>	<b>-12.4%</b>	<b>2.3%</b>	<b>4.0%</b>	<b>16.5%</b>	<b>7.3%</b>

Note: Beginning in fall 2006, New MBA graduate students are coded as Business Administration (BUS) with a specific concentration.

<sup>5</sup> Formerly Quantitative Analysis

<sup>6</sup> Formerly Risk Management and Insurance



The Peter J. Tobin College of Business (34)  
 Student Enrollment - Graduate Division  
 Queens, Rome, and Manhattan  
 Fall 2000 - Fall 2010

Rome Campus											
PROGRAM	2000	2001	2002	2003	2004	2005	2006	2007	2008	2009	2010
<b>Master in Business Administration (MBA)</b>	46	54	49	46	51	42	41	38	37	33	38
<i>BUS Business Administration</i>	-	-	-	-	-	-	13	27	32	32	37
Finance	-	-	-	-	-	-	1	9	6	10	14
International Business	-	-	-	-	-	-	7	12	18	17	17
Marketing	-	-	-	-	-	-	5	6	8	5	6
FIN Finance	35	38	31	21	25	15	13	7	3	1	1
INTB International Business	0	0	3	13	15	13	8	1	-	-	-
MGT1 Executive Management	0	0	0	0	0	0	0	0	-	-	-
MKT Marketing	11	16	15	12	11	14	7	3	2	-	-
NM Non-Matric	1	1	1	1	0	0	0	2	0	0	0
<b>TOTAL ROME:</b>	<b>47</b>	<b>55</b>	<b>50</b>	<b>47</b>	<b>51</b>	<b>42</b>	<b>41</b>	<b>40</b>	<b>37</b>	<b>33</b>	<b>38</b>
<b>PERCENT CHANGE:</b>		<b>17.0%</b>	<b>-9.1%</b>	<b>-6.0%</b>	<b>8.5%</b>	<b>-17.6%</b>	<b>-2.4%</b>	<b>-2.4%</b>	<b>-7.5%</b>	<b>-10.8%</b>	<b>15.2%</b>

Manhattan Campus											
PROGRAM	2000	2001	2002	2003	2004	2005	2006	2007	2008	2009	2010
<b>Master in Business Administration (MBA)</b>	-	52	45	40	52	63	70	87	106	119	105
<i>BUS Business Administration</i>	-	52	45	40	52	31	40	64	89	102	85
Public Accounting	-	-	-	-	-	-	2	4	1	-	-
Finance	-	-	-	-	-	-	5	34	56	66	48
Financial Management of Risk	-	-	-	-	-	-	-	3	4	3	2
Risk Management & Insurance	-	-	-	-	-	31	33	23	27	32	34
Taxation	-	-	-	-	-	-	-	-	1	1	1
ACC 1 Public Accounting	-	-	-	1	1	3	2	2	8	15	19
ACT Actuarial Science	-	1	-	-	-	-	-	-	-	-	-
FIN Finance	-	-	-	7	26	29	28	21	9	2	1
RMI Risk Management and Insurance	-	51	45	32	25	-	-	-	-	-	-
<b>Master in Science (MS)</b>	-	18	19	13	23	45	72	98	95	90	131
ACC 1 Public Accounting	-	-	-	-	-	5	12	22	25	30	43
MGTE Enterprise Risk Management	-	-	-	-	-	-	-	-	-	-	12
MGTI Investment Management	-	-	-	-	-	-	-	-	-	-	13
MGTR Management of Risk (MS) <sup>6</sup>	-	18	19	13	22	35	49	64	58	48	50
TAX Taxation	-	-	-	-	1	5	11	12	12	12	13
<b>Advanced Certificate (APCRT/ADVCR)</b>	-	-	-	-	-	-	1	1	0	0	0
ACC 1 Public Accounting	-	-	-	-	-	-	1	1	0	0	0
NM Non-Matric	-	-	-	-	-	-	-	-	-	1	0
<b>TOTAL MANHATTAN:</b>	<b>70</b>	<b>64</b>	<b>53</b>	<b>75</b>	<b>108</b>	<b>143</b>	<b>186</b>	<b>201</b>	<b>210</b>	<b>210</b>	<b>236</b>
<b>PERCENT CHANGE:</b>		<b>-8.6%</b>	<b>-17.2%</b>	<b>41.5%</b>	<b>44.0%</b>	<b>32.4%</b>	<b>30.1%</b>	<b>8.1%</b>	<b>4.5%</b>	<b>12.4%</b>	

<b>QUEENS, ROME &amp; MANHATTAN TOTAL:</b>	<b>719</b>	<b>662</b>	<b>646</b>	<b>626</b>	<b>646</b>	<b>652</b>	<b>624</b>	<b>676</b>	<b>706</b>	<b>788</b>	<b>859</b>
<b>PERCENT CHANGE:</b>		<b>-7.9%</b>	<b>-2.4%</b>	<b>-3.1%</b>	<b>3.2%</b>	<b>0.9%</b>	<b>-4.3%</b>	<b>8.3%</b>	<b>4.4%</b>	<b>11.6%</b>	<b>9.0%</b>

Notes: The College of Insurance merged with St. John's University as of June 1, 2001 to form the Manhattan campus.

For reference purposes: 83 graduate students in fall 2000.

Beginning in fall 2006, New MBA graduate students are coded as Business Administration (BUS) with a specific concentration.

<sup>5</sup> Formerly Quantitative Analysis

<sup>6</sup> Formerly Risk Management and Insurance

Prepared by: Office of Institutional Research (cmg,mw)

Based on data as of 10/12/2010



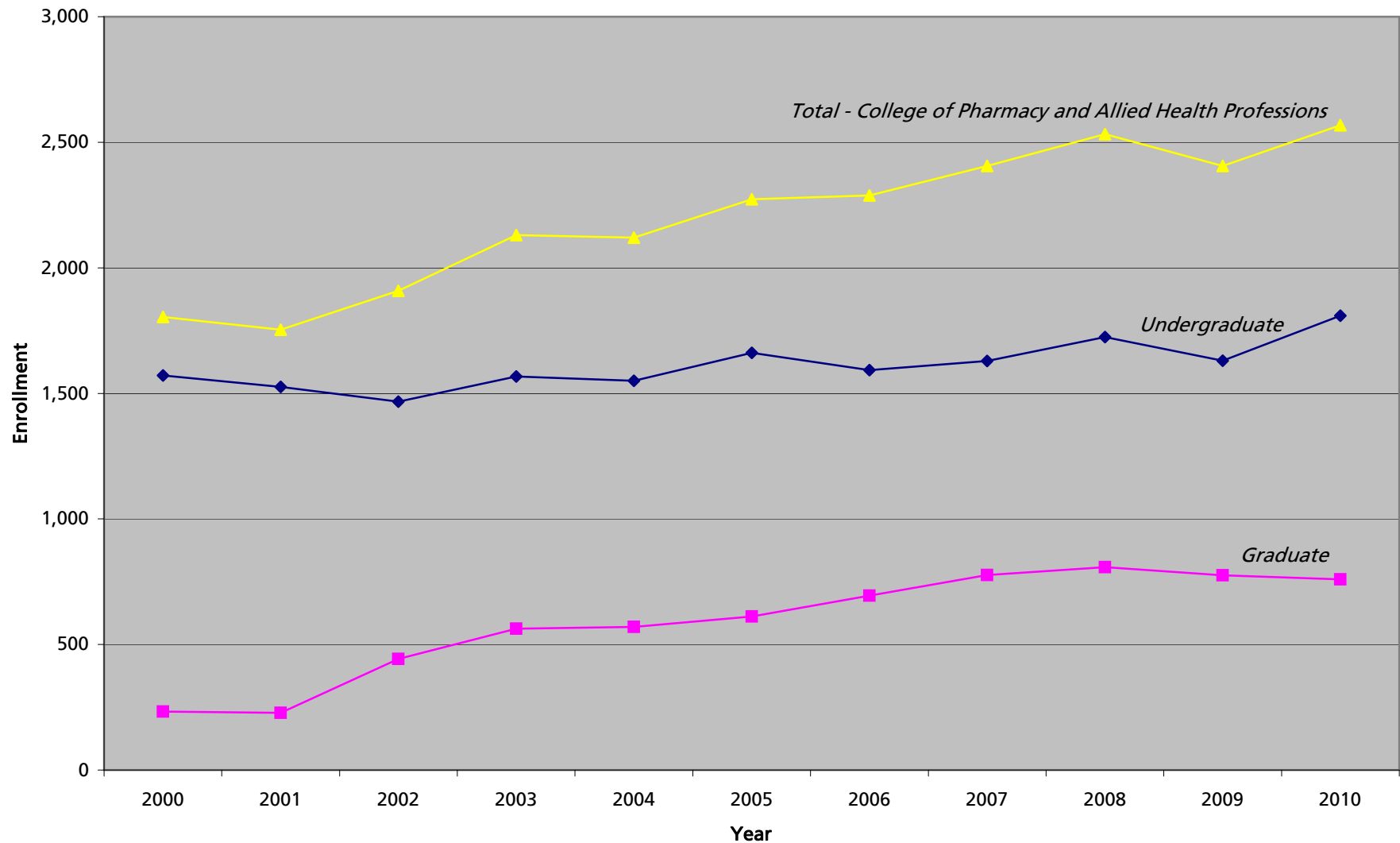
The Peter J. Tobin College of Business (84)  
 Student Enrollment - Graduate Division  
 Staten Island Campus  
 Fall 2000 - Fall 2010

PROGRAM	2000	2001	2002	2003	2004	2005	2006	2007	2008	2009	2010
<b>Master in Business Administration (MBA)</b>	<b>117</b>	<b>84</b>	<b>80</b>	<b>58</b>	<b>63</b>	<b>60</b>	<b>45</b>	<b>40</b>	<b>37</b>	<b>34</b>	<b>28</b>
<i>BUS Business Administration</i>	-	-	-	-	-	-	1	6	12	18	11
Finance	-	-	-	-	-	-	-	4	6	12	9
Executive Management	-	-	-	-	-	-	1	2	6	6	2
ACC1 Public Accounting	8	3	2	8	12	19	17	22	22	15	16
FIN Finance	73	63	55	36	39	27	16	7	2	-	-
MGT1 Executive Management	36	18	20	11	11	13	11	5	1	1	1
TAX Taxation	0	0	3	3	1	1	-	-	-	-	-
<b>Master in Science (MS)</b>	<b>13</b>	<b>26</b>	<b>19</b>	<b>21</b>	<b>6</b>	<b>9</b>	<b>3</b>	<b>6</b>	<b>10</b>	<b>13</b>	<b>14</b>
ACC2 Accounting BS/MS	13	26	19	21	6	9	3	6	10	11	13
ACC Accounting	-	-	-	-	-	-	-	-	-	1	-
TAX Taxation	-	-	-	-	-	-	-	-	-	1	1
<b>Advanced Certificate (APCRT/ADVCR)</b>	<b>1</b>	<b>1</b>	<b>1</b>	<b>0</b>	<b>0</b>	<b>0</b>	<b>0</b>	<b>0</b>	<b>0</b>	<b>0</b>	<b>0</b>
ACC1 Public Accounting	1	1	1	0	0	0	0	0	0	0	0
0000 Undeclared	1	0	0	0	0	0	1	0	0	0	0
NM Non-Matric	0	1	0	0	0	0	0	0	0	0	0
<b>TOTAL:</b>	<b>132</b>	<b>112</b>	<b>100</b>	<b>79</b>	<b>69</b>	<b>69</b>	<b>49</b>	<b>46</b>	<b>47</b>	<b>47</b>	<b>42</b>
<b>PERCENT CHANGE:</b>		<b>-15.2%</b>	<b>-10.7%</b>	<b>-21.0%</b>	<b>-12.7%</b>	<b>0.0%</b>	<b>-29.0%</b>	<b>-6.1%</b>	<b>2.2%</b>	<b>0.0%</b>	<b>-10.6%</b>

Note: Beginning in fall 2006, New MBA graduate students are coded as Business Administration (BUS) with a specific concentration.



### College of Pharmacy and Allied Health Professions Student Enrollment Fall 2000 - Fall 2010



*Note: Beginning in 2002, 5th and 6th year PharmD students are coded as graduate students.*



College of Pharmacy and Allied Health Professions (05)  
 Student Enrollment - Undergraduate Division  
 Queens Campus  
 Fall 2000 - Fall 2010

PROGRAM	2000	2001	2002	2003	2004	2005	2006	2007	2008	2009	2010
<b>MEDICAL TECHNOLOGY COMBINED</b>	<b>32</b>	<b>17</b>	<b>15</b>	<b>26</b>	<b>43</b>	<b>52</b>	<b>53</b>	<b>54</b>	<b>80</b>	<b>63</b>	<b>51</b>
MED Medical Technology	31	16	15	26	43	52	53	54	80	63	51
MEDS Medical Tech - Self Pace <sup>3</sup>	1	1	-	-	-	-	-	-	-	-	-
<b>NURSING COMBINED <sup>2</sup></b>	<b>5</b>	<b>2</b>	<b>1</b>	<b>-</b>	<b>-</b>	<b>-</b>	<b>-</b>	<b>-</b>	<b>-</b>	<b>-</b>	<b>-</b>
NUR Nursing <sup>2</sup>	2	1	1	-	-	-	-	-	-	-	-
NURS Nursing - Self Pace <sup>3</sup>	3	1	0	-	-	-	-	-	-	-	-
<b>PHARMACY COMBINED</b>	<b>1,236</b>	<b>1,233</b>	<b>1,140</b>	<b>1,157</b>	<b>1,137</b>	<b>1,158</b>	<b>1,114</b>	<b>1,114</b>	<b>1,103</b>	<b>1,073</b>	<b>1,199</b>
PHA Pharmacy <sup>2</sup>	464	245	15	20	3	-	-	-	-	-	-
PHA6 Pharmacy - 6 Yr PharmD	729	933	1,068	1,114	1,132	1,157	1,114	1,114	1,103	1,073	1,199
PHAS Pharmacy - Self Pace <sup>3</sup>	43	55	57	23	2	1	-	-	-	-	-
<b>PHYSICIAN ASSISTANT COMBINED</b>	<b>265</b>	<b>241</b>	<b>268</b>	<b>314</b>	<b>288</b>	<b>336</b>	<b>330</b>	<b>379</b>	<b>421</b>	<b>381</b>	<b>373</b>
PNT Physician Assistant	250	225	250	302	286	334	329	379	421	381	373
PNTS Physician Assist - Self Pace <sup>3</sup>	15	16	18	12	2	2	1	-	-	-	-
<b>TOXICOLOGY COMBINED</b>	<b>20</b>	<b>26</b>	<b>34</b>	<b>61</b>	<b>67</b>	<b>101</b>	<b>82</b>	<b>77</b>	<b>65</b>	<b>56</b>	<b>78</b>
TOX Toxicology	20	26	33	61	67	101	82	77	65	56	78
TOXS Toxicology - Self-Pace <sup>2,3</sup>	-	-	1	-	-	-	-	-	-	-	-
<b>OTHER PROGRAMS</b>											
CYT Cytotechnology	1	0	0	3	3	-	-	-	-	-	-
RAD Radiologic Sciences	-	-	-	-	-	-	-	-	55	57	108
PAT Pathologist's Assistant	11	7	9	6	12	14	14	5	-	-	-
NM Non-Matric	1	-	-	-	-	-	-	-	-	-	-
<b>TOTAL:</b>	<b>1,571</b>	<b>1,526</b>	<b>1,467</b>	<b>1,567</b>	<b>1,550</b>	<b>1,661</b>	<b>1,593</b>	<b>1,629</b>	<b>1,724</b>	<b>1,630</b>	<b>1,809</b>
<b>PERCENT CHANGE:</b>		<b>-2.9%</b>	<b>-3.9%</b>	<b>6.8%</b>	<b>-1.1%</b>	<b>7.2%</b>	<b>-4.1%</b>	<b>2.3%</b>	<b>5.8%</b>	<b>-5.5%</b>	<b>11.0%</b>

Note: Since 2002, 5<sup>th</sup> and 6<sup>th</sup> year PharmD students are coded as graduate students.

<sup>2</sup> No longer offered

<sup>3</sup> Not a program

Prepared by: Office of Institutional Research (cmg,mw)

Based on data as of 10/12/2010



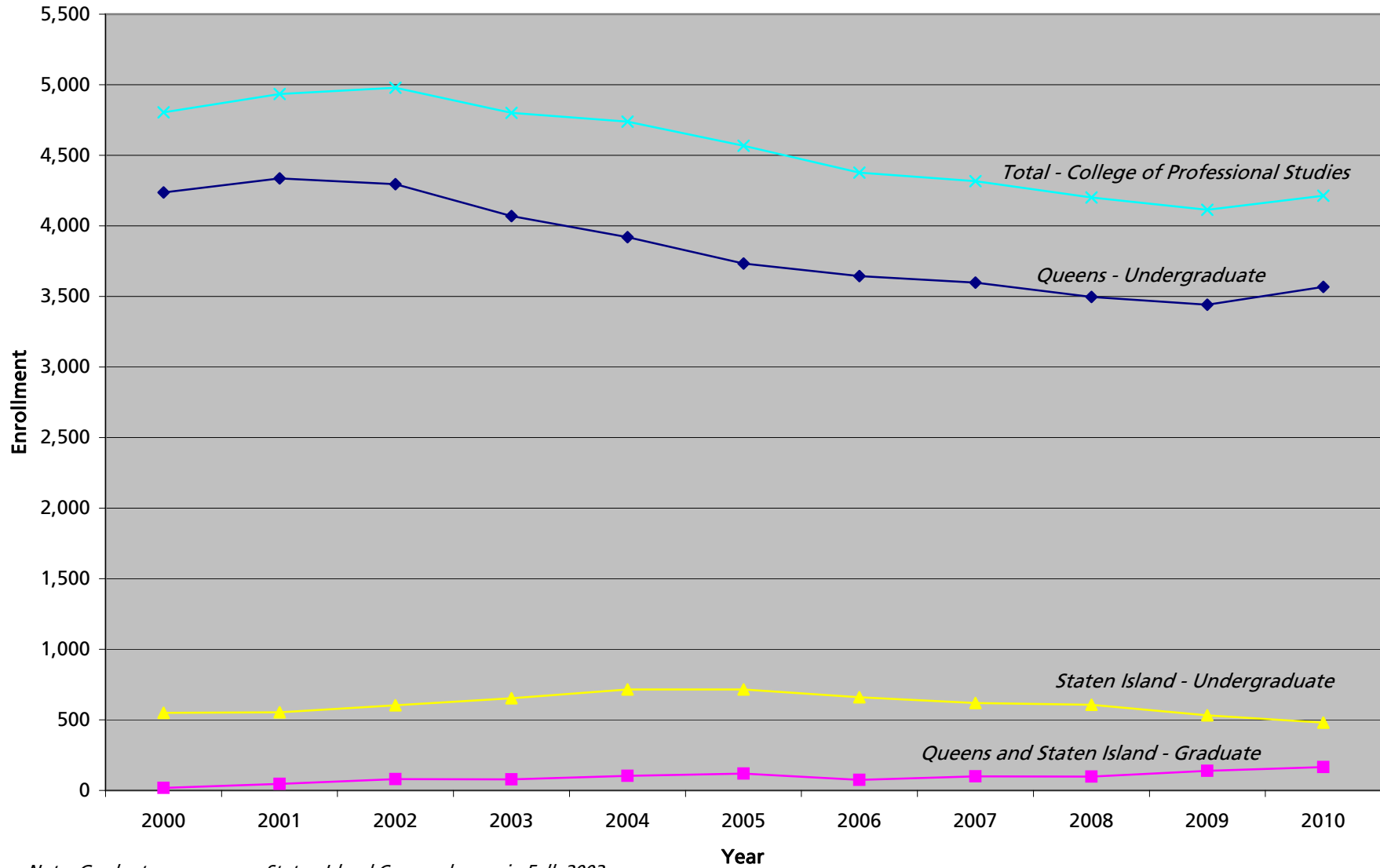
College of Pharmacy and Allied Health Professions (25)  
 Student Enrollment - Graduate Division  
 Queens Campus  
 Fall 2000 - Fall 2010

PROGRAM	2000	2001	2002	2003	2004	2005	2006	2007	2008	2009	2010
<b>PHARMACY - SCIENCES COMBINED</b>	<b>120</b>	<b>103</b>	<b>110</b>	<b>113</b>	<b>122</b>	<b>130</b>	<b>151</b>	<b>185</b>	<b>203</b>	<b>176</b>	<b>184</b>
PHA1 Pharmaceutical Sciences (MS and PhD)	119	103	110	113	122	130	151	185	203	176	184
PHA3 Pharmacy & Library Science	1	0	0	0	0	0	0	0	0	0	0
<b>PHARMACY COMBINED</b>	<b>89</b>	<b>96</b>	<b>301</b>	<b>427</b>	<b>427</b>	<b>457</b>	<b>518</b>	<b>566</b>	<b>570</b>	<b>567</b>	<b>544</b>
PHA6 Pharmacy - 6Yr PharmD	-	-	171	343	354	389	460	513	489	489	494
PHA2 Pharmacy Administration	16	16	22	25	23	22	22	33	60	65	46
PHA9 Pharmacy, Practitioner Opion	73	80	108	59	50	46	36	20	21	13	4
<b>OTHER PROGRAMS</b>											
MED Medical Technology	2	1	1	0	1	-	-	-	-	-	-
TOX Toxicology	15	16	19	16	19	20	23	22	31	32	28
0000 Undeclared	1	0	0	0	0	0	0	0	0	0	0
NM Non-Matric	6	12	11	7	1	5	3	4	4	1	3
<b>TOTAL:</b>	<b>233</b>	<b>228</b>	<b>442</b>	<b>563</b>	<b>570</b>	<b>612</b>	<b>695</b>	<b>777</b>	<b>808</b>	<b>776</b>	<b>759</b>
<b>PERCENT CHANGE:</b>		<b>-2.1%</b>	<b>93.9%</b>	<b>27.4%</b>	<b>1.2%</b>	<b>7.4%</b>	<b>13.6%</b>	<b>11.8%</b>	<b>4.0%</b>	<b>-4.0%</b>	<b>-2.2%</b>

Note: Since 2002, 5<sup>th</sup> and 6<sup>th</sup> year PharmD students are coded as graduate students.



# College of Professional Studies Student Enrollment Fall 2000 - Fall 2010



Note: Graduate program on Staten Island Campus began in Fall 2003

PROGRAM	2000	2001	2002	2003	2004	2005	2006	2007	2008	2009	2010
<b>ADVERTISING COMMUNICATION COMBINED</b>	-	-	-	-	-	47	96	119	129	125	124
ADV Advertising Communication	-	-	-	-	-	28	-	-	-	-	-
ADVCM Advertising Communication (Creative Trk)	-	-	-	-	-	6	80	97	99	106	79
ADVM Advertising Communication (Acc. Mgt)	-	-	-	-	-	10	11	11	17	11	32
ADVP Advertising Communication (Media Planning)	-	-	-	-	-	3	5	11	13	8	13
<b>BUSINESS COMBINED</b>	206	185	169	112	88	65	66	42	44	65	89
BUS Business Administration (AS)	173	155	145	94	73	57	61	39	43	65	89
BUS1 Business - Accounting Option (AS)	33	30	24	18	15	8	5	3	1	0	0
<b>COMMUNICATION ARTS COMBINED</b>	403	443	446	443	440	433	424	390	336	330	342
CAS Communication Arts	403	443	446	442	437	430	420	389	334	329	341
CAS1 Communication Arts/Sociology	0	0	0	1	3	2	4	1	2	1	1
CAS2 Communication Arts/Gov&Politic	-	-	-	-	-	1	-	-	-	-	-
<b>COMPUTER SCIENCE &amp; IT COMBINED</b>	770	829	673	464	345	243	193	177	194	235	243
CUS Computer Science	562	504	368	259	189	125	121	101	111	126	122
CUS2/CUSB Computer Science (Business)	130	218	190	123	89	61	33	33	27	20	18
CUS3/CUST Computer Science (Telecom.)	44	78	93	69	51	37	13	8	6	6	5
CUSC Computer Science	-	-	-	-	-	-	-	1	0	1	1
CUSF Computer Science	-	-	-	-	-	-	-	1	4	3	2
CUSG Computer Science (Media)	-	-	-	-	-	1	4	5	0	2	2
CUSM Computer Science	-	-	-	-	-	-	-	1	0	1	3
CUSS Computer Science (Security Systems)	-	-	-	-	-	-	2	4	8	7	7
CUSW Computer Science	-	-	-	-	-	-	-	-	-	-	2
CUS1 Microcomputer Systems <sup>2</sup>	34	29	22	13	-	-	-	-	-	-	-
CSS Computer Security Systems	-	-	-	-	-	-	-	1	17	33	54
IT Information Technology	-	-	-	-	16	1	2	2	1	16	6
ITB Information Technology (Business)	-	-	-	-	-	14	12	15	14	14	18
ITC Information Technology	-	-	-	-	-	-	-	-	-	1	-
ITF Information Technology (CYBF)	-	-	-	-	-	-	-	-	1	1	2
ITG Information Technology (Graphic Design)	-	-	-	-	-	1	2	2	3	2	1
ITS Information Technology (SECS)	-	-	-	-	-	-	-	-	1	2	-
ITT Information Technology (Telecomm.)	-	-	-	-	-	3	4	3	1	-	-
<b>CRIMINAL JUSTICE COMBINED</b>	594	532	545	535	529	509	498	441	409	364	395
CRJ Criminal Justice (BS)	527	468	492	501	509	456	448	389	371	303	310
CRJ1 Criminal Justice (AS)	48	40	40	30	19	23	18	21	9	7	12
CRJ2 Criminal Justice/Sociology	0	0	0	1	1	6	6	2	0	2	2
CRJ3 Criminal Justice/Gov't & Polit	0	0	0	2	0	1	0	0	0	0	1
CRJ5 Criminal Justice - International Spec.	5	5	2	0	0	0	0	0	0	0	0
CRJ6 Criminal Justice - Legal Studies Spec.	14	19	11	1	0	0	0	0	0	0	0
CRJF Criminal Justice (Forensic Psychology)	-	-	-	-	-	23	26	29	29	52	70
<b>ELECTRONIC DATA PROCESS COMBINED</b>	54	40	35	21	1	-	-	-	-	-	-
EDP Electronic Data Processing (AS) <sup>2</sup>	40	31	23	15	1	-	-	-	-	-	-
EDP1 Microcomputer Tech (AS) <sup>2</sup>	14	9	12	6	-	-	-	-	-	-	-
<b>HEALTH CARE COMBINED</b>	121	102	97	97	113	105	95	105	103	105	87
HSA Health Services Administration	121	102	97	97	112	104	95	105	102	105	87
HSA2 Health Services Admin/Sociology	0	0	0	0	1	1	0	0	1	0	0
<b>JOURNALISM COMBINED</b>	87	97	106	116	144	162	172	199	188	179	185
JOU Journalism	87	96	106	116	142	160	171	199	188	179	184
JOU1 Journalism/Sociology	-	-	-	-	1	1	0	0	0	0	1
JOU2 Journalism - Government&Politics	0	1	0	0	1	1	1	0	0	0	0
<b>LEGAL STUDIES COMBINED</b>	176	169	236	290	305	349	375	364	405	380	390
LES Legal Studies (BS)	156	151	209	271	289	329	363	358	401	371	384
LES1 Legal Studies (AS)	17	16	21	15	13	16	11	5	4	6	5
LES2 Legal Studies/Sociology	0	0	0	1	3	0	0	0	0	1	1
LES3 Legal Studies/Gov & Politics	0	0	0	0	0	0	0	0	0	1	0
LES9 Legal Studies (Certificate)	3	2	6	3	0	4	1	1	0	1	0
<b>NETWORKING/TELECOMMUNICATION COMBINED</b>	70	67	76	77	76	48	28	29	25	12	12
NET Networking & Telecommunication	-	-	-	-	-	-	-	-	-	9	12
TEL Telecommunications (BS)	39	31	29	29	26	20	11	11	13	2	-
TEL1 Telecommunications (AS)	9	5	7	3	2	2	-	-	-	-	-
TEL2/TELB Telecommunications (Business Option)	16	23	33	37	37	19	13	14	9	0	-
TEL3/TELU Telecommunications (Multi Media)	6	8	7	8	11	7	2	1	-	-	-
TELC Telecommunications (Corporate Security)	-	-	-	-	-	-	2	-	-	-	-
TELG Telecommunications	-	-	-	-	-	-	-	3	3	1	-

<sup>2</sup> No Longer Offered

Note: Figures include Distance Learning Students. Please refer to the Distance Learning Enrollment Report.





**College of Professional Studies (03)  
Student Enrollment - Undergraduate Division  
Queens Campus  
Fall 2000 - Fall 2010**

PROGRAM	2000	2001	2002	2003	2004	2005	2006	2007	2008	2009	2010
<b>TELEVISION COMBINED</b>	<b>68</b>	<b>87</b>	<b>93</b>	<b>107</b>	<b>121</b>	<b>119</b>	<b>143</b>	<b>137</b>	<b>157</b>	<b>196</b>	<b>190</b>
TVF Television and Film Prod (BS)	52	67	72	80	81	75	136	137	156	194	190
TVF1 Television And Film (AS)	3	7	4	5	8	8	7	0	1	2	-
TVF2 Television And Film Prod/Video	8	5	9	13	9	10	-	-	-	-	-
TVF3 Tele And Film Prod/Film Studies	5	8	8	9	23	26	-	-	-	-	-
<b>OTHER PROGRAMS</b>											
ADS Administrative Studies	32	50	59	57	48	38	46	55	64	44	30
DAFT Dramatic Arts, Film & Television	-	-	-	-	-	-	-	-	-	-	2
FSA Funeral Service Administration	15	13	14	16	10	8	6	6	5	5	7
HCI Healthcare Informatics	-	-	-	-	-	-	-	-	-	-	6
HCS Homeland & Corporate Security <sup>12</sup>	-	-	-	-	-	-	-	-	5	17	43
HHS Health and Human Services	-	-	-	-	-	-	-	-	-	-	15
HMT Hospitality Management	109	102	85	90	81	80	102	123	112	116	111
HSC Human Services <sup>10</sup>	-	31	42	65	64	51	40	46	40	38	33
LAS Liberal Arts (AA)	257	233	226	237	176	142	95	62	50	38	34
LGE Legal Environments of Enterprise	-	-	-	-	-	-	-	-	-	-	2
LST Liberal Studies	48	28	23	25	25	22	31	500	630	585	604
LIT Literature & Speech	11	8	5	4	1	-	-	-	-	-	-
PHOJ Photojournalism	-	-	-	-	-	-	-	-	-	-	1
PUBR Public Relations	-	-	-	-	-	-	-	29	87	140	162
PSS Paraprof School Service (AS) <sup>2</sup>	3	1	-	-	-	-	-	-	-	-	-
REM Real Estate Management <sup>2</sup>	4	3	-	-	-	-	-	-	-	-	-
SPM Sport Management	251	290	325	323	330	320	355	338	346	383	413
SSC Social Science	20	26	20	10	5	3	2	2	1	0	1
0000 Undeclared	935	993	1017	977	1017	986	875	433	166	84	46
NM Non-Matric	3	7	3	3	1	3	2	1	1	1	-
<b>TOTAL:</b>	<b>4,237</b>	<b>4,336</b>	<b>4,295</b>	<b>4,069</b>	<b>3,920</b>	<b>3,733</b>	<b>3,644</b>	<b>3,598</b>	<b>3,497</b>	<b>3,442</b>	<b>3,567</b>
<b>PERCENT CHANGE:</b>		<b>2.3%</b>	<b>-0.9%</b>	<b>-5.3%</b>	<b>-3.7%</b>	<b>-4.8%</b>	<b>-2.4%</b>	<b>-1.3%</b>	<b>-2.8%</b>	<b>-1.6%</b>	<b>3.6%</b>

<sup>2</sup> No longer offered

<sup>10</sup> Formerly offered in The School of Education

<sup>12</sup> Prior to 2008, was known as Security Administration

As of Fall 2005, some major codes were changed to take concentrations into consideration and standardize them in Banner.

As of Fall 2007, conditionally accepted incoming freshmen have been coded as LST. Previously, they were coded as Undeclared.

As of Fall 2009, Telecommunications is now Networking and Telecommunications.

Note: Figures include Distance Learning Students. Please refer to the Distance Learning Enrollment Report.



**College of Professional Studies (53)  
Student Enrollment - Undergraduate Division  
Staten Island Campus  
Fall 2000- Fall 2010**

PROGRAM	2000	2001	2002	2003	2004	2005	2006	2007	2008	2009	2010
<b>ADVERTISING COMMUNICATION</b>	-	-	-	-	-	-	-	-	1	4	4
ADVC Advertising Communication	-	-	-	-	-	-	-	-	1	2	3
ADVM Advertising Communication	-	-	-	-	-	-	-	-	-	1	1
ADVP Advertising Communication	-	-	-	-	-	-	-	-	-	1	-
<b>BUSINESS COMBINED</b>	<b>122</b>	<b>140</b>	<b>130</b>	<b>112</b>	<b>105</b>	<b>64</b>	<b>42</b>	<b>20</b>	<b>9</b>	<b>8</b>	<b>3</b>
BUS Business Administration (AS)	119	134	126	112	105	64	42	20	9	8	3
BUS1 Business - Accounting Option (AS)	3	6	4	-	-	-	-	-	-	-	-
<b>CRIMINAL JUSTICE COMBINED</b>	<b>106</b>	<b>90</b>	<b>91</b>	<b>93</b>	<b>110</b>	<b>121</b>	<b>105</b>	<b>92</b>	<b>97</b>	<b>87</b>	<b>92</b>
CRJ Criminal Justice	85	76	67	68	78	100	86	80	84	76	83
CRJ1 Criminal Justice (AS)	21	14	24	25	32	21	19	5	5	3	1
CRJF Criminal Justice	-	-	-	-	-	-	-	7	8	8	8
<b>LEGAL STUDIES COMBINED</b>	<b>74</b>	<b>84</b>	<b>113</b>	<b>129</b>	<b>128</b>	<b>125</b>	<b>106</b>	<b>95</b>	<b>90</b>	<b>88</b>	<b>58</b>
LES Legal Studies (BS)	60	69	92	111	106	110	96	90	87	86	57
LES1 Legal Studies (AS)	12	15	21	17	20	14	9	5	3	2	-
LES9 Legal Studies (CERT)	2	0	0	1	2	1	1	-	-	-	1
<b>TELECOMMUNICATIONS COMBINED</b>	<b>14</b>	<b>12</b>	<b>12</b>	<b>16</b>	<b>19</b>	<b>15</b>	<b>6</b>	<b>3</b>	<b>3</b>	<b>1</b>	<b>1</b>
TEL Telecommunications (BS)	10	10	9	11	12	14	6	3	3	1	1
TEL1 Telecommunications (AS)	2	1	2	2	1	1	-	-	-	-	-
TEL2 Telecommunications (Bus Opt)	2	1	1	3	6	-	-	-	-	-	-
<b>TELEVISION COMBINED</b>	<b>17</b>	<b>25</b>	<b>24</b>	<b>23</b>	<b>22</b>	<b>16</b>	<b>14</b>	<b>12</b>	<b>17</b>	<b>17</b>	<b>19</b>
TVF Television and Film Prod (BS)	11	18	18	20	17	14	14	12	17	17	19
TVF1 Television and Film Prod (AS)	2	3	3	1	2	-	-	-	-	-	-
TVF2 Television & Film Prod: Video	2	2	2	1	2	2	-	-	-	-	-
TVF3 Television & Film Prod: Film Std	2	2	1	1	1	-	-	-	-	-	-
<b>TRANSPORTATION COMBINED</b>	<b>1</b>	<b>1</b>	-	-	-	-	-	-	-	-	-
TRA1 Transportation And Logistics <sup>7</sup>	1	1	-	-	-	-	-	-	-	-	-
<b>OTHER PROGRAMS</b>											
ADS Administrative Studies	1	1	1	0	1	0	2	2	3	5	3
CAS Communication Arts	102	102	141	165	161	144	105	110	118	96	76
FSA Funeral Service Admin	13	5	9	6	9	5	6	6	8	7	4
HCS Homeland & Corporate Security <sup>12</sup>	0	1	1	1	1	1	1	1	1	1	4
HSA Health Services Administration	9	5	-	-	-	-	-	-	-	-	-
HMT Hospitality Management	25	27	19	17	18	22	20	26	24	27	20
JOU Journalism	-	-	-	-	-	-	-	-	1	5	11
LST Liberal Studies	-	-	-	-	-	-	-	84	128	116	123
PUBR Public Relations	-	-	-	-	-	-	-	-	1	3	4
SCA Security & Corporate Admin	1	1	-	-	-	-	-	-	-	-	-
SPM Sport Management	43	35	43	44	59	61	62	71	59	40	42
0000 Undeclared	21	24	20	47	83	141	191	97	46	27	16
<b>TOTAL:</b>	<b>549</b>	<b>553</b>	<b>604</b>	<b>653</b>	<b>716</b>	<b>715</b>	<b>660</b>	<b>619</b>	<b>606</b>	<b>532</b>	<b>480</b>
<b>PERCENT CHANGE:</b>		<b>0.7%</b>	<b>9.2%</b>	<b>8.1%</b>	<b>9.6%</b>	<b>-0.1%</b>	<b>-7.7%</b>	<b>-6.2%</b>	<b>-2.1%</b>	<b>-12.2%</b>	<b>-9.8%</b>

Notes:

As of Fall 2005, some major codes were changed to take concentrations into consideration and standardize them in Banner.

<sup>7</sup> Formerly offered in Notre Dame College

<sup>12</sup> Prior to 2008, was known as Security Administration

As of Fall 2007, conditionally accepted incoming freshmen have been coded as LST. Previously, they were coded as Undeclared.



**College of Professional Studies  
Student Enrollment - Graduate Division  
Fall 2000 - Fall 2010**

**Queens Campus (23)**

<b>PROGRAM</b>	<b>2000</b>	<b>2001</b>	<b>2002</b>	<b>2003</b>	<b>2004</b>	<b>2005</b>	<b>2006</b>	<b>2007</b>	<b>2008</b>	<b>2009</b>	<b>2010</b>
CRL Criminal Justice Leadership	16	46	78	54	78	82	46	49	42	52	57
SPM Sport Management	-	-	-	-	-	-	-	23	34	45	58
ICM International Communications	-	-	-	-	-	-	-	-	-	26	35
NM Non-Matric	2	0	2	1	1	2	1	1	2	-	-
<b>TOTAL:</b>	<b>18</b>	<b>46</b>	<b>80</b>	<b>55</b>	<b>79</b>	<b>84</b>	<b>47</b>	<b>73</b>	<b>78</b>	<b>123</b>	<b>150</b>
<b>PERCENT CHANGE:</b>		<b>155.6%</b>	<b>73.9%</b>	<b>-31.3%</b>	<b>43.6%</b>	<b>6.3%</b>	<b>-44.0%</b>	<b>55.3%</b>	<b>6.8%</b>	<b>57.7%</b>	<b>22.0%</b>

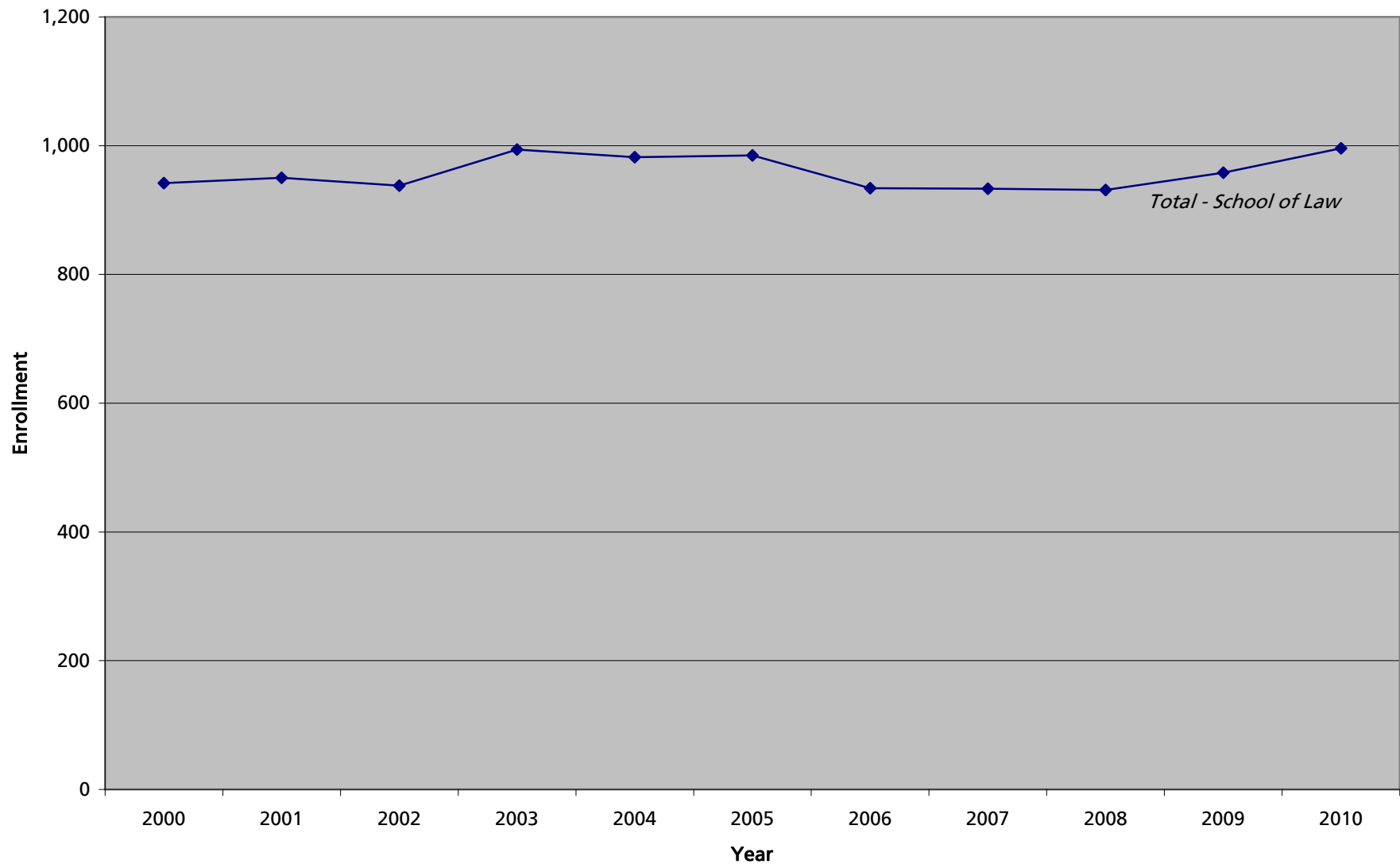
**Staten Island Campus (83)**

<b>PROGRAM</b>	<b>2000</b>	<b>2001</b>	<b>2002</b>	<b>2003</b>	<b>2004</b>	<b>2005</b>	<b>2006</b>	<b>2007</b>	<b>2008</b>	<b>2009</b>	<b>2010</b>
CRL Criminal Justice Leadership	-	-	-	24	23	32	22	24	19	12	14
0000 Undeclared	-	-	-	-	-	3	5	0	1	1	-
NM Non-Matric	-	-	-	-	1	1	0	3	0	3	2
<b>TOTAL:</b>				<b>24</b>	<b>24</b>	<b>36</b>	<b>27</b>	<b>27</b>	<b>20</b>	<b>16</b>	<b>16</b>
<b>PERCENT CHANGE:</b>				<b>0.0%</b>	<b>0.0%</b>	<b>50.0%</b>	<b>-25.0%</b>	<b>0.0%</b>	<b>-25.9%</b>	<b>-20.0%</b>	<b>0.0%</b>
<b>Queens and Staten Island Total:</b>	<b>18</b>	<b>46</b>	<b>80</b>	<b>79</b>	<b>103</b>	<b>120</b>	<b>74</b>	<b>100</b>	<b>98</b>	<b>139</b>	<b>166</b>
<b>PERCENT CHANGE:</b>		<b>155.6%</b>	<b>73.9%</b>	<b>-1.3%</b>	<b>30.4%</b>	<b>16.5%</b>	<b>-38.3%</b>	<b>35.1%</b>	<b>-2.0%</b>	<b>41.8%</b>	<b>19.4%</b>

*Note: Queens: College of Professional Studies- Graduate Division started in Fall 2000  
Staten Island: College of Professional Studies-Graduate Division began in Fall 2003  
9 S.I. Students were coded as Queens in Fall 2002.  
Queens figures may include Oakdale Students. Please refer to the Oakdale Enrollment Report.*



### School of Law Student Enrollment Fall 2000 - Fall 2010





**School of Law (28)**  
**Student Enrollment - Graduate Division**  
**Queens Campus**  
**Fall 2000 - Fall 2010**

PROGRAM		2000	2001	2002	2003	2004	2005	2006	2007	2008	2009	2010
LAW	Law	923	936	918	974	966	964	922	915	894	922	949
LLMB	Masters In Bankruptcy (LLM)	19	14	20	20	16	16	11	16	19	28	29
LLMU	US Legal Studies Foreign Lw Grd	-	-	-	-	-	-	-	-	17	7	18
NM	Non-Matric	-	-	-	-	-	5	1	2	1	1	-
<b>TOTAL:</b>		<b>942</b>	<b>950</b>	<b>938</b>	<b>994</b>	<b>982</b>	<b>985</b>	<b>934</b>	<b>933</b>	<b>931</b>	<b>958</b>	<b>996</b>
<b>PERCENT CHANGE:</b>			<b>0.8%</b>	<b>-1.3%</b>	<b>6.0%</b>	<b>-1.2%</b>	<b>0.3%</b>	<b>-5.2%</b>	<b>-0.1%</b>	<b>-0.2%</b>	<b>2.9%</b>	<b>4.0%</b>



Institute for Biotechnology (39)  
Student Enrollment - Graduate Division  
Queens Campus  
Fall 2000 - Fall 2010

PROGRAM	2000	2001	2002	2003	2004	2005	2006	2007	2008	2009	2010
BIOT Biological/ Pharmaceutical Biot	-	-	-	-	-	-	-	9	15	21	20
<b>TOTAL:</b>								<b>9</b>	<b>15</b>	<b>21</b>	<b>20</b>
<b>PERCENT CHANGE:</b>									<b>66.7%</b>	<b>40.0%</b>	<b>-4.8%</b>

Note: This Institute began in Spring 2007