

Christine M. Goodwin
Director

Adam Constantine
Associate Director

Veronica Cava
Assistant Director

Mary Siconolfi
Senior Secretary

Graduate Students:
Alex Catterson
Christine Freeze
Ronald Reyes
Marianella Rivera



ST. JOHN'S UNIVERSITY

Fact Book

**Fall 2019
Enrollment Reports
Report by Major 2009-2019**

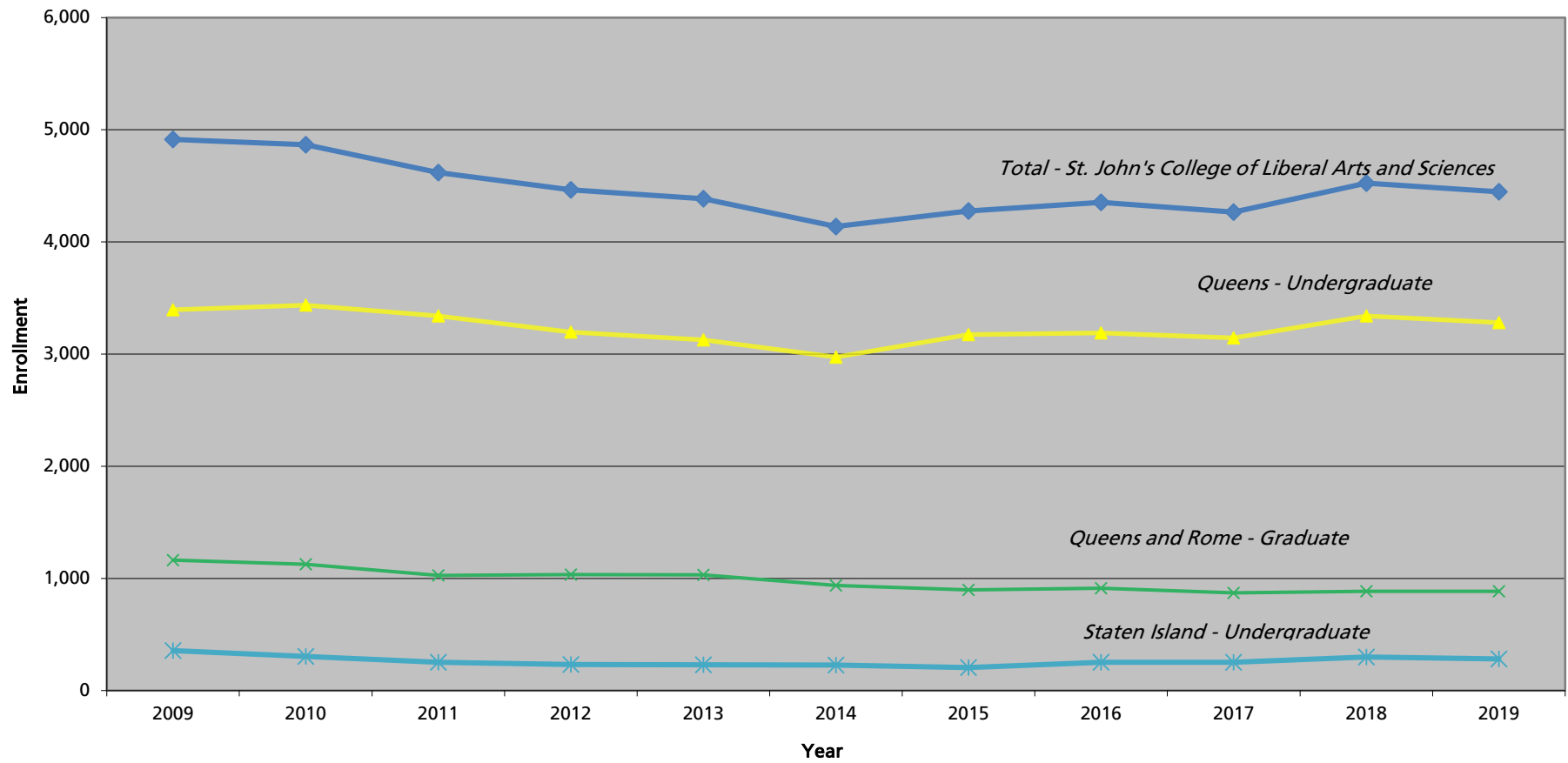
Office of Institutional Research
Newman Hall B22

Phone: (718) 990-1869 Fax: (718) 990-2314
[*ir@stjohns.edu*](mailto:ir@stjohns.edu)
[*stjohns.edu/ir*](http://stjohns.edu/ir)



ST. JOHN'S
UNIVERSITY

St. John's College of Liberal Arts and Sciences Student Enrollment Fall 2009 - Fall 2019





St. John's College of Liberal Arts and Sciences (01)
 Student Enrollment - Undergraduate Division
 Queens Campus
 Fall 2009 - Fall 2019

MAJOR	2009	2010	2011	2012	2013	2014	2015	2016	2017	2018	2019
ANTHROPOLOGY COMBINED	30	34	43	33	32	25	23	22	24	17	16
ANT Anthropology	30	34	43	33	32	25	23	22	24	16	16
ANTZ Anthropology/Business Admin	-	-	-	-	-	-	-	-	-	1	-
ASIAN STUDIES COMBINED	23	23	28	23	22	15	15	15	13	15	12
ASC Asian Studies	23	23	28	23	22	15	13	13	13	13	12
ASCZ Asian Studies/Business Administration	-	-	-	-	-	-	2	2	-	2	-
BIOLOGY COMBINED	632	668	674	712	744	757	840	898	894	1038	1049
BIO Biology	631	667	673	708	741	754	837	895	893	1037	1046
BIO3 Biology/Optomety	1	1	1	3	3	2	2	2	1	1	3
BIO5 Biology/Podiatric Medicine	-	-	-	1	-	1	1	1	-	-	-
CHE Chemistry	113	112	112	101	112	98	115	101	113	114	94
CRIM Criminology and Justice¹⁵	-	-	-	-	-	-	-	-	2	-	1
ECO Economics	50	47	62	50	48	58	55	60	59	60	48
ENGLISH COMBINED	228	229	207	167	153	150	165	162	161	152	127
ENG English	228	229	207	167	153	150	163	161	161	151	125
ENGZ English/Business Administration	-	-	-	-	-	-	2	1	-	1	2
ENVIRONMENTAL STUDIES COMBINED	48	54	61	59	55	54	49	49	43	55	63
ESP/ENS Environmental Science ¹⁸	27	32	36	37	34	27	28	34	25	36	43
ESP5/ESD Environmental Sustain & Decision Making ¹⁹	21	22	25	22	21	27	21	15	18	19	20
FINE ARTS COMBINED	98	98	103	97	98	90	90	103	112	121	120
FNA Art	20	11	22	19	16	13	15	23	20	13	15
FNA1 Graphic Design	49	48	44	43	45	43	43	42	53	59	53
FNA2/PHO Creative Photography/Photography	19	28	26	23	21	19	16	19	19	22	23
FNA4 Illustration	10	11	11	12	16	15	16	19	20	27	29
FRENCH COMBINED	20	18	20	20	15	14	8	7	7	8	2
FRE French	20	18	20	20	14	13	8	7	7	7	2
FREZ French/Business Admin	-	-	-	-	1	1	-	-	-	1	-
GDS Global Development & Sustainability	-	-	-	-	-	-	-	-	-	6	15
GOVERNMENT COMBINED	252	251	225	223	222	173	180	187	215	245	252
GOV Government & Politics	246	243	220	212	214	163	172	177	207	238	247
GOV2 Public Admin & Public Service	6	8	5	11	8	10	8	10	8	7	5
HISTORY COMBINED	125	121	115	95	92	91	81	77	81	74	73
HIS History	125	121	115	95	92	91	80	76	81	73	72
HISZ History/Business Administration	-	-	-	-	-	-	1	1	-	1	1
ITALIAN COMBINED	23	15	12	13	11	10	7	2	8	4	3
ITA Italian	23	15	12	13	11	9	7	2	8	4	3
ITAZ Italian/Business Admin	-	-	-	-	-	1	-	-	-	-	-
MTH Mathematics	37	43	49	45	41	52	44	57	50	39	38
MTH Mathematics	37	43	49	45	41	52	44	57	50	39	38
PHILOSOPHY COMBINED	81	92	109	88	92	71	71	71	64	57	57
PHI Philosophy	73	74	85	76	78	63	56	59	59	51	55
PHI1 Philosophy - Theology ²	2	9	-	-	-	-	-	-	-	-	-
PHI2 Philosophical - Theological Studies-Cert Program	6	9	24	12	14	8	15	12	5	6	2



St. John's College of Liberal Arts and Sciences (01)
 Student Enrollment - Undergraduate Division
 Queens Campus
 Fall 2009 - Fall 2019

MAJOR	2009	2010	2011	2012	2013	2014	2015	2016	2017	2018	2019
PHYSICAL SCIENCE COMBINED	38	43	43	49	30	24	28	21	14	6	3
PHY1 Physical Science	15	17	10	16	11	11	16	13	9	4	2
PHY3 Physical Science (Bio Med Engineering) ²	15	17	27	18	7	3	-	-	-	-	-
PHY4 Physical Science (Pre Engineering)	8	9	6	15	12	10	12	8	5	2	1
PHYSICS COMBINED	33	31	35	37	38	46	37	33	40	34	31
PHY Physics	31	28	33	36	38	45	34	27	37	32	27
PHYZ Physics/Business Admin	-	-	-	-	-	-	-	-	1	-	-
PHYM Mathematical Physics	2	3	2	1	-	1	1	5	2	2	4
PHYS/MTHZ Math Physics/Business Administration	-	-	-	-	-	-	2	1	-	-	-
PSYCHOLOGY COMBINED	577	603	610	573	560	523	552	564	548	581	588
PSY Psychology	577	603	610	573	552	515	535	552	540	565	582
PSY7 Psychology / Criminology & Justice	-	-	-	-	8	5	12	10	5	11	1
PSYZ Psychology/Business Admin	-	-	-	-	-	3	5	2	3	5	5
RPA Rhetoric & Public Address²¹	9	12	12	9	6	4	2	-	5	2	4
SOCIOLOGY COMBINED	85	74	74	93	81	65	56	66	51	47	51
SOC Sociology	80	69	72	89	79	64	53	66	51	46	51
SOC3 BA Sociology/MA Criminology & Justice	5	5	2	4	2	1	2	-	-	-	-
SOCZ Sociology/Business Administration	-	-	-	-	-	-	1	-	-	1	-
SPA Spanish	25	24	25	24	13	16	11	9	4	3	9
SPE Speech Pathology & Audiology	112	109	115	141	147	146	154	146	160	173	175
THE Theology	18	18	11	11	10	12	14	12	16	14	11
0000 Undecided	668	609	560	464	431	399	537	509	439	424	398
NM Non-Matriculated¹⁷	70	108	35	70	73	80	39	17	21	50	40
TOTAL:	3,395	3,436	3,340	3,197	3,126	2,973	3,173	3,188	3,144	3,339	3,280
PERCENT CHANGE:		1.2%	-2.8%	-4.3%	-2.2%	-4.9%	6.7%	0.5%	-1.4%	6.2%	-1.8%

Notes:

² No longer offered

¹⁵ Students from the College of Mount Saint Vincent

¹⁷ 2018 total includes 14 students from Inside-Outside Exchange Program

¹⁸ As of Fall 2018, Environmental Studies (Ecology) (ESP) is now Environmental Science (ENS)

¹⁹ As of Fall 2018, Environmental Studies (Social Science) (ESP5) is now Environmental Sustainability & Decision Making (ESD)

²¹ As of Spring 2017, Speech (Public Address, Gen. Speech) (SPE1) is now Rhetoric & Public Address (RPA)



St. John's College of Liberal Arts and Sciences (51)
 Staten Island Campus - Undergraduate
 Fall 2009 - Fall 2019

MAJOR	2009	2010	2011	2012	2013	2014	2015	2016	2017	2018	2019
<i>CUS Computer Science</i>	18	19	14	15	8	12	13	19	28	40	37
<i>ECO Economics</i>	-	1	-	1	1	2	3	3	2	1	1
<i>ENG English</i>	30	28	19	23	22	20	15	14	16	20	16
<i>ESD Environment Sustain & Decision Making</i>	-	-	-	-	-	-	-	-	-	1	-
<i>GOV Government & Politics</i>	23	20	16	19	20	22	17	12	11	12	10
<i>HIS History</i>	15	16	13	11	7	7	5	8	8	9	12
<i>LAS Liberal Arts</i>	6	6	1	1	-	1	1	1	1	3	3
<i>MTH Mathematics</i>	3	4	2	6	11	7	4	3	3	2	4
<i>PHI Philosophy</i>	1	1	1	3	2	1	2	2	2	1	-
PSYCHOLOGY COMBINED	100	86	70	56	57	55	50	63	58	56	57
PSY Psychology	100	86	70	56	56	54	50	63	58	56	57
PSY7 Psychology/Criminology & Justice	-	-	-	-	1	1	-	-	-	-	-
SOCIOLOGY/SOCIAL STUDIES COMBINED	15	11	6	7	4	9	10	13	11	6	3
SOC Sociology	6	6	3	3	3	7	7	7	8	4	2
SST Social Studies	9	5	3	4	1	2	3	6	3	2	1
<i>SPE Speech Pathology & Audiology</i>	64	63	58	51	53	48	52	70	79	85	89
<i>THE Theology</i>	4	2	1	4	3	3	1	1	-	-	-
<i>0000 Undecided</i>	76	47	51	36	40	40	31	43	33	64	50
<i>NM Non-Matric</i>	1	1	-	-	1	-	1	-	-	-	-
TOTAL	356	305	252	233	229	227	205	252	252	300	282
PERCENTAGE CHANGE		-14.3%	-17.4%	-7.5%	-1.7%	-0.9%	-9.7%	22.9%	0.0%	19.0%	-6.0%



St. John's College of Liberal Arts and Sciences (21)
 Student Enrollment - Graduate Division
 Queens Campus
 Fall 2009 - Fall 2019

MAJOR			2009	2010	2011	2012	2013	2014	2015	2016	2017	2018	2019
ASIAN STUDIES COMBINED			14	14	12	17	20	17	10	10	10	12	7
CHS	Chinese Studies		3	2	1	2	2	2	-	1	1	-	-
EAC	East Asian Cultural Studies		-	-	-	-	-	-	-	1	-	-	-
AAS	Asian & African Cultural Studies ²		1	1	-	-	-	-	-	-	-	-	-
EAS	East Asian Studies		10	11	11	15	18	15	10	8	9	12	7
AUDIOLOGY & SPEECH COMBINED			153	152	156	150	142	145	159	158	170	156	153
AUD	Audiology		34	33	54	52	42	44	58	53	63	60	65
SPE/SPE5	Speech Language Pathology ²⁵		119	119	102	98	100	101	101	105	107	96	88
BIOLOGY			34	38	36	39	38	39	37	32	34	33	32
BIO	Biology	MS	12	14	12	15	14	15	16	14	16	16	12
		Ph.D.	22	24	24	24	24	24	21	18	18	17	20
CHE	Chemistry		24	28	21	27	23	20	37	43	38	19	22
CRIM	Criminology and Justice		29	39	54	34	23	27	35	41	26	26	47
ENGLISH COMBINED			80	81	92	92	96	99	91	89	89	81	78
ENG	English	MA	27	27	26	21	24	23	18	18	18	18	18
		DA	53	54	66	71	72	76	72	6	6	3	1
		Ph.D.	-	-	-	-	-	-	1	65	65	60	59
GDSJ	Global Dev & Social Justice		32	36	38	37	49	43	32	32	33	24	16
GOVERNMENT COMBINED			65	61	53	59	53	40	35	36	37	44	50
GOV	Government & Politics		64	60	51	57	51	40	35	35	37	44	50
GOV3	Govt & Politics/Library Sci		1	1	2	2	-	-	-	-	-	-	-
GOV6	Public Administration (Adv Cert.)		-	-	-	-	-	-	-	1	-	-	-
GOV9	Government & Politics/Library Info Sci		-	-	-	-	2	-	-	-	-	-	-
HISTORY COMBINED			47	52	52	67	76	72	61	48	48	55	58
HIS	History	MA	15	17	22	24	21	17	15	10	11	10	13
HIS2	Modern World History	DA	32	35	30	37	44	43	36	10	7	6	3
HIS3	Public History	MA	-	-	-	6	11	12	10	6	2	4	2
HIS4	World History	Ph.D	-	-	-	-	-	-	-	22	24	25	27
HISL	Public His/Lib & Info Science	MA/MS	-	-	-	-	-	-	-	-	4	10	13
LAC	Latin American and Caribbean Studies		-	-	1	1	1	-	-	2	2	-	-
LST	Liberal Studies		24	14	12	14	17	13	15	12	7	7	4
LIBRARY SCIENCE COMBINED			187	136	79	69	64	65	66	68	64	104	125
LIS1/LIS2	Library Science ²	MLS	184	134	75	54	22	-	-	-	-	-	-
LIS2	Library & Information Science	MS/ADVCRT	-	-	-	13	42	64	65	68	63	102	124
LIS1	Library & Information Science ²	ADVCRT	3	2	4	2	-	1	1	-	-	-	-
LIS3	Management for Info Profession	ADVCRT	-	-	-	-	-	-	-	-	1	2	1
MATHMEMATICS COMBINED			5	7	8	9	5	-	-	-	5	14	8
MTH	Mathematics ²		5	7	8	9	5	-	-	-	-	-	-
MTH4	Applied & Computational Math		-	-	-	-	-	-	-	-	5	14	8
MIN	Ministerial Studies²		2	2	2	1	-	-	-	-	-	-	-
MUSA	Museum Administration		-	-	-	-	-	-	7	11	11	13	16



St. John's College of Liberal Arts and Sciences (21)
 Student Enrollment - Graduate Division
 Queens Campus
 Fall 2009 - Fall 2019

MAJOR		2009	2010	2011	2012	2013	2014	2015	2016	2017	2018	2019
PSYCHOLOGY COMBINED		269	252	229	243	236	222	202	206	193	184	203
PSY1/PSY	Psychology ²² MA	19	23	17	24	27	30	18	19	13	12	23
PSY2	Clinical Psy-General Track Ph.D	35	38	36	34	30	28	27	29	28	27	27
PSY3	Clinical Psy-Clin Child Track Ph.D	32	28	30	30	30	25	27	26	27	27	29
PSY5	School Psychology MS	64	60	47	39	34	36	34	27	23	20	24
PSY5	School Psychology Psy.D	86	60	54	59	65	65	64	61	54	54	58
PSY6	School Psychology/Bilingual Ext MS	9	5	6	14	12	10	8	16	17	14	12
PSY6	School Psychology/Bilingual Ext Psy.D	24	38	39	43	38	28	24	28	31	30	30
SOC	Sociology	35	31	31	36	37	24	19	20	20	15	10
SPA	Spanish	9	15	19	16	14	14	15	18	15	11	7
THEOLOGY COMBINED		38	37	45	40	42	37	25	30	26	23	14
THE	Theology	38	37	44	37	39	34	25	30	26	23	14
THE2	Theo Catechetical Ministry	-	-	1	3	3	3	-	-	-	-	-
NM	Non-Matric	71	84	50	52	59	34	37	35	23	46	23
TOTAL QUEENS:		1,118	1,079	990	1,003	995	911	883	891	851	867	873
PERCENT CHANGE:			-3.5%	-8.2%	1.3%	-0.8%	-8.4%	-3.1%	0.9%	-4.5%	1.9%	0.7%

Rome Campus

MAJOR		2009	2010	2011	2012	2013	2014	2015	2016	2017	2018	2019
GOV	Government & Politics	45	47	37	32	36	27	14	22	20	19	13
TOTAL ROME:		45	47	37	32	36	27	14	22	20	19	13
PERCENT CHANGE:			4.4%	-21.3%	-13.5%	12.5%	-25.0%	-48.1%	57.1%	-9.1%	-5.0%	-31.6%
QUEENS & ROME TOTAL:		1,163	1,126	1,027	1,035	1,031	938	897	913	871	886	886
PERCENT CHANGE:			-3.2%	-8.8%	0.8%	-0.4%	-9.0%	-4.4%	1.8%	-4.6%	1.7%	0.0%

Notes:

² No longer offered

²² As of Fall 2017, Gen-Exper Psychology (PSY1) is now Psychology (PSY)

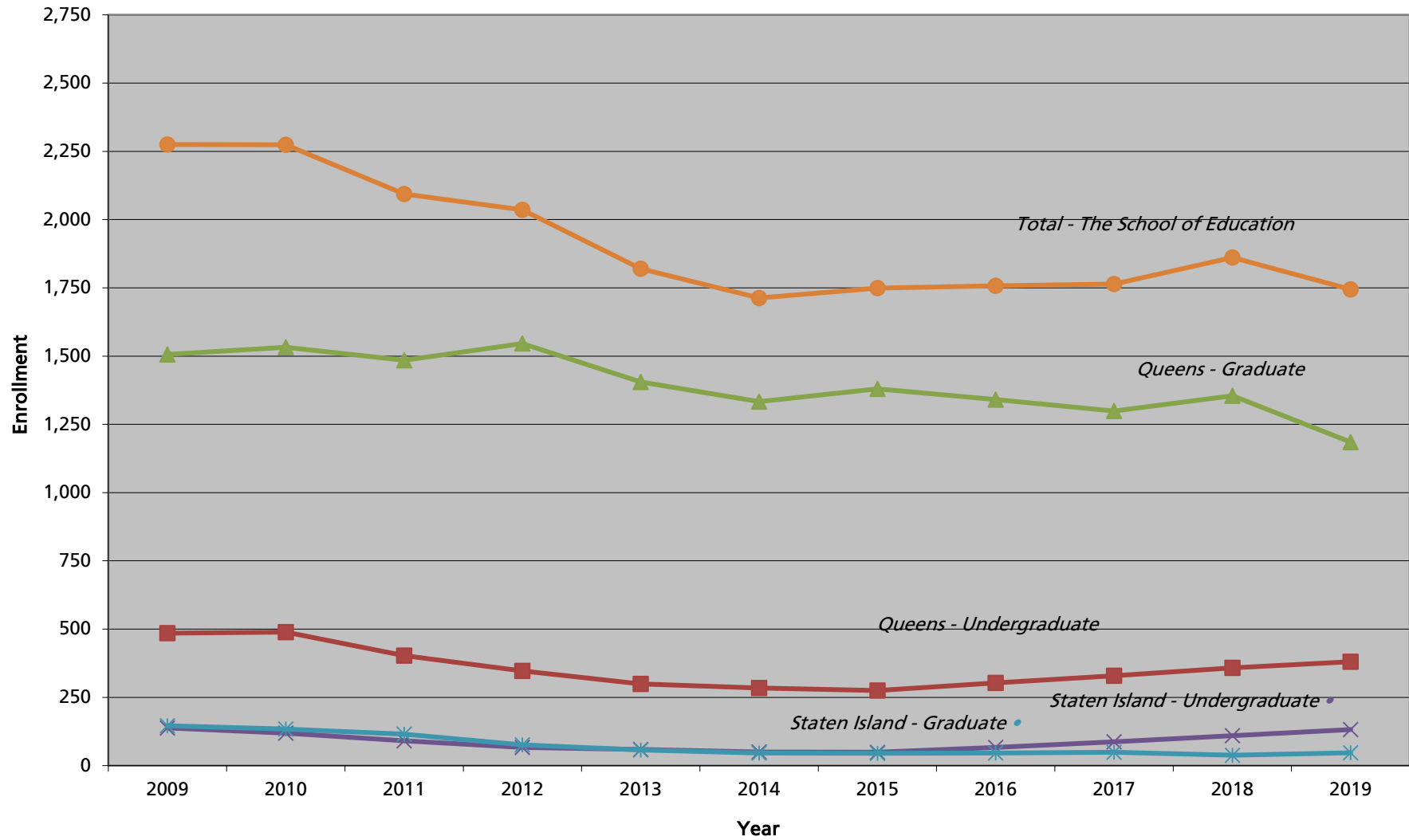
²⁵ As of Fall 2010, Speech Pathology & Audiology (SPE) is now Speech Language Pathology (SPE5)

Queens figures include Online Learning and Long Island Graduate Center Students. Please refer to the Online Learning and Long Island Graduate Center Enrollment Reports.



ST. JOHN'S
UNIVERSITY

**The School of Education
Student Enrollment
Fall 2009 - Fall 2019**





The School of Education (12)
 Student Enrollment - Undergraduate Division
 Queens Campus
 Fall 2009 - Fall 2019

MAJOR	2009	2010	2011	2012	2013	2014	2015	2016	2017	2018	2019
CHILDHOOD COMBINED	289	289	235	215	185	190	182	184	185	214	230
CED Childhood Education 1-6	208	206	161	153	150	170	167	176	183	214	230
CEDS Childhood Edu & Special Edu 1-6	81	83	74	62	35	20	15	8	2	-	-
ADOLESCENCE COMBINED	196	200	167	131	114	93	93	119	144	144	149
AEB Adolescence Edu/Biology	21	18	15	8	9	8	9	12	11	11	12
AEE Adolescence Edu/English	47	57	44	36	33	33	32	28	36	33	31
AEM Adolescence Edu/Mathematics	45	42	39	35	33	20	24	31	39	37	36
AEP Adolescence Edu/Physics	4	8	6	-	-	2	2	2	2	1	2
AESP Adolescence Edu/Spanish	14	13	8	4	4	3	4	9	11	13	15
AESS Adolescence Edu/Social Studies	65	62	55	48	35	27	22	37	45	49	53
NM Non-Matric	-	-	1	1	-	1	-	-	-	-	1
TOTAL:	485	489	403	347	299	284	275	303	329	358	380
PERCENT CHANGE:		0.8%	-17.6%	-13.9%	-13.8%	-5.0%	-3.2%	10.2%	8.6%	8.8%	6.1%

Dual degree students are coded within their major codes.



The School of Education (62)
 Student Enrollment - Undergraduate Division
 Staten Island Campus
 Fall 2009 - Fall 2019

MAJOR	2009	2010	2011	2012	2013	2014	2015	2016	2017	2018	2019
ADOLESCENCE COMBINED	35	26	21	19	16	10	12	17	26	34	37
AEE Adolescence Edu/English	16	11	8	9	6	6	5	7	11	11	16
AEM Adolescence Edu/Mathematics	9	10	9	5	6	2	5	8	11	16	11
AESS Adolescence Edu/Social Studies	10	5	4	5	4	2	2	2	4	7	10
CHILDHOOD COMBINED	103	93	70	48	43	40	37	50	61	76	94
CED Childhood Education 1-6	91	79	60	43	41	40	37	50	61	76	94
CEDS Childhood Edu & Spec Edu 1-6	12	14	10	5	2	-	-	-	-	-	-
0000 Undecided	-	-	-	-	-	-	-	-	-	-	1
TOTAL	138	119	91	67	59	50	49	67	87	110	132
PERCENTAGE CHANGE		-13.8%	-23.5%	-26.4%	-11.9%	-15.3%	-2.0%	36.7%	29.9%	26.4%	20.0%

Note:

Dual degree students are coded within their major codes.



The School of Education (32)
 Student Enrollment - Graduate Division
 Queens Campus
 Fall 2009 - Fall 2019

MAJOR	2009	2010	2011	2012	2013	2014	2015	2016	2017	2018	2019
ADOLESCENCE EDUCATION COMBINED	275	255	263	331	242	205	268	261	272	252	203
AEB Adolescence Edu/Biology	1	2	1	1	3	2	1	-	1	1	-
AEE Adolescence Edu/English	9	6	5	5	5	6	6	4	1	-	-
AEM Adolescence Edu/Mathematics	3	5	3	7	6	10	42	5	2	3	2
AESP Adolescence Edu/Spanish	2	2	-	1	-	1	-	-	-	-	-
AESS Adolescence Edu/Social Studies	4	4	4	5	6	5	1	-	-	-	-
ADE Adolescence Edu - Non Cert. ²	-	-	1	-	-	-	-	-	-	-	-
AEC Adolescence Education: Career	165	162	158	105	83	44	54	35	29	26	28
AEET Adolescence Edu: Eng 7-12 (TF)	14	-	-	21	20	44	58	16	19	4	-
AEF Adolescence Education: Field	2	2	-	-	-	-	1	1	2	1	-
AERP Adolescence Education: Residency Prog	-	-	-	62	33	25	28	73	81	88	84
ARP2 Adolescence Education: Gen. w/SWD Extension	-	-	-	-	-	-	8	17	31	57	56
AMC Alt. Cert.-Adol Math 7-12 (TF)	75	28	-	63	82	68	69	110	106	72	32
AMSP Adolescent Math Special Edu	-	37	88	56	1	-	-	-	-	-	-
MDM Alter Cert. Child Ed MID Math	-	-	-	1	-	-	-	-	-	-	-
MCE5 Middle Childhood 5-6 Extension	-	4	-	3	-	-	-	-	-	-	-
MCE7 Middle Childhood 7-9 Extension	-	3	3	1	3	-	-	-	-	-	1
TEACHING STUDENTS WITH DISABILITIES COMBINED	152	174	182	198	283	266	229	224	195	147	106
TCD Teach Child with DIS Childhood	29	27	35	25	33	24	28	10	17	15	24
TCD1 Teach Stu with DIS 7-12 Gener	-	-	-	4	15	21	9	10	18	2	-
TCD2 Alt Cert Stu with Dis 7-12 Gen	-	-	-	51	139	140	116	130	96	69	2
TCD3 ADE & Teach SWD 7-12 Gen Ext	-	-	-	-	-	5	10	6	17	4	3
TFD Teach Fellow: Child Disabilities	-	-	-	2	-	-	-	-	-	19	43
CSPE Childhood & Childhood Spec Edu	123	129	108	81	63	46	39	41	22	16	14
CHDS Child Edu/ Spec Edu-Non Cert	-	-	1	-	-	-	-	-	-	-	-
ECTD Early Child B-2 & Teac Dis B-2	-	18	35	32	30	25	24	22	21	21	19
ECDF Early Child/Dis B-2: Field Chg	-	-	3	3	3	5	3	5	4	1	1
BILINGUAL EDUCATION COMBINED	47	61	57	47	17	14	13	17	7	6	9
BIL Bilingual Extension	3	7	11	11	8	8	11	11	3	3	6
BIL1 Bilingual Ed: ITI	34	47	32	20	2	1	1	-	-	1	2
BIL2 Bilingual Special Ed: ITI	6	7	14	15	5	3	1	3	2	1	-
BIL3 Bilingual Pupil Person Ser: ITI	1	-	-	1	2	2	-	3	2	1	1
EDU9 Bilingual/Multicultural Edu ²	3	-	-	-	-	-	-	-	-	-	-
TESOL COMBINED	158	176	199	252	194	161	198	139	97	95	87
TES TESOL	100	103	101	121	96	76	3	-	-	-	-
TES1/TES5 TESOL: ITI / TESOL PK-12 ITI ²⁶	12	22	30	32	6	1	6	4	1	-	-
TES2/TES6 TESOL Special Ed: ITI / TESOL PK-12 Special Ed- ITI ²⁷	-	4	19	18	12	9	6	5	1	2	4
TES3/TES4 TESOL K-12 / TESOL PK-12 ²⁸	-	-	8	25	31	30	151	85	73	72	56
CTES/TES7 Childhood Education & TESOL PK-12 - Career ²⁹	46	47	41	56	49	45	32	28	22	21	27
TES9 Teacher Inst in ESL (CR-ITI)	-	-	-	-	-	-	-	17	-	-	-
NM Non-Matric	92	80	53	45	42	45	48	34	32	42	41
TOTAL:	1,506	1,532	1,485	1,546	1,405	1,333	1,380	1,341	1,299	1,355	1,185
PERCENT CHANGE:		1.7%	-3.1%	4.1%	-9.1%	-5.1%	3.5%	-2.8%	-3.1%	4.3%	-12.5%

Notes:

² No longer offered

²³ As of Fall 2015, Teach Lit 5-12 & TESOL K-12 (LTC6) is now Teach Lit 5-12 & TESOL PK-12 (LTCT)

²⁴ As of Fall 2015, Teach Lit B-6 & TESOL K-12 (LTC7) is now Teach Lit B-6 & TESOL PK-12 (LTC9)

²⁶ As of Fall 2015, TESOL: ITI (TES1) is now TESOL PK-12 ITI (TES5)

²⁷ As of Fall 2015, TESOL Special Ed: ITI (TES2) is now TESOL PK-12 Special Ed - ITI (TES6)

²⁸ As of Fall 2015, TESOL K-12 (TES3) is now TESOL PK-12 (TES4)

²⁹ As of Fall 2015, Childhood Education & TESOL (CTES) is now Childhood Education & TESOL PK-12 - Career (TES7)

Queens figures include Online Learning and Long Island Graduate Center Students. Please refer to the Online Learning and Long Island Graduate Center Enrollment Reports.



The School of Education (82)
 Student Enrollment - Graduate Division
 Staten Island Campus
 Fall 2009 - Fall 2019

MAJOR	2009	2010	2011	2012	2013	2014	2015	2016	2017	2018	2019
AEC <i>Adolescence Edu: Career Change</i>	-	-	-	-	-	3	6	5	5	1	3
CHILDHOOD/ELEMENTARY EDUCATION COMBINED	43	41	24	11	8	7	5	1	3	4	4
CEC Childhood Education: Career	36	33	18	8	7	5	4	1	3	3	3
CED Childhood Education 1-6	5	6	4	2	-	-	-	-	-	1	1
CEF Childhood Education: Field	1	2	2	1	1	1	1	-	-	-	-
CHD Childhood Edu - Non Cert	1	-	-	-	-	1	-	-	-	-	-
ED ADMIN & SUPERVISION COMBINED	24	24	16	10	7	4	4	4	2	1	-
SBDL Sch Building/Sch Distr Leaders	-	2	2	1	2	1	1	1	1	-	-
SBL School Building Leadership	24	21	14	9	5	3	3	3	1	1	-
SDL School District Leadership	-	1	-	-	-	-	-	-	-	-	-
READING LITERACY COMBINED	12	13	9	12	12	6	4	4	2	4	3
LTC Teaching Literacy B-12	3	4	2	-	-	-	-	-	-	-	-
LTCB Literacy Birth-6	9	8	3	3	1	1	-	-	-	1	-
LTC2 Teaching Literacy Grades 5-12	-	-	-	-	-	-	-	-	1	-	-
LTC3 Teaching Literacy Birth-6 (ADVCR)	-	-	-	-	1	1	2	1	-	-	-
LTC4 Teach Lit B-6 & Tch Child w/ Dis	-	-	2	5	5	2	-	-	-	-	-
LTC5 Literacy 5-12	-	1	-	1	2	1	1	2	-	2	2
LTC6/LTCT Teach Lit 5-12 & TESOL PK-12 ²³	-	-	2	1	1	-	-	-	-	-	1
LTC7/LTC9 Teach Lit B-6 & TESOL PK-12 ²⁴	-	-	-	2	2	1	1	1	1	1	-
MIDDLE CHILDHOOD ED. COMBINED	-	1	1	1	-	-	-	-	-	-	-
MCE5 Middle Childhood 5-6 Extension	-	1	-	-	-	-	-	-	-	-	-
MCE7 Middle Childhood 7-9 Extension	-	-	1	1	-	-	-	-	-	-	-
TEACHING STUDENTS WITH DISABILITIES COMBINED	21	16	30	19	8	11	4	10	18	13	20
CHDS Child Edu/Spec Edu - Non Cert ²	-	1	1	2	-	-	-	-	-	-	-
CSPE Childhood & Childhood Spec Edu	17	14	20	13	7	2	1	4	8	7	7
TCD Teach Child with DIS Childhood	4	1	9	3	-	5	1	5	8	2	4
TCD1 Teach Stud with Dis 7-12 General	-	-	-	1	1	2	1	-	-	-	-
TCD3 ADE & Teach SWD 7-12 Gen Ext	-	-	-	-	-	2	1	1	2	4	9
COUNSELOR COMBINED	43	35	32	20	20	14	18	21	18	15	17
CMHC Clinical Mental Health Counseling Education	9	10	16	13	12	9	8	9	9	1	-
SHC School Counselor	34	25	16	7	8	5	10	12	9	14	17
NM <i>Non-Matric</i>	3	4	3	3	2	1	4	1	1	-	-
TOTAL:	146	134	115	76	57	46	45	46	49	38	47
PERCENT CHANGE:		-8.2%	-14.2%	-33.9%	-25.0%	-19.3%	-2.2%	2.2%	6.5%	-22.4%	23.7%

Notes:

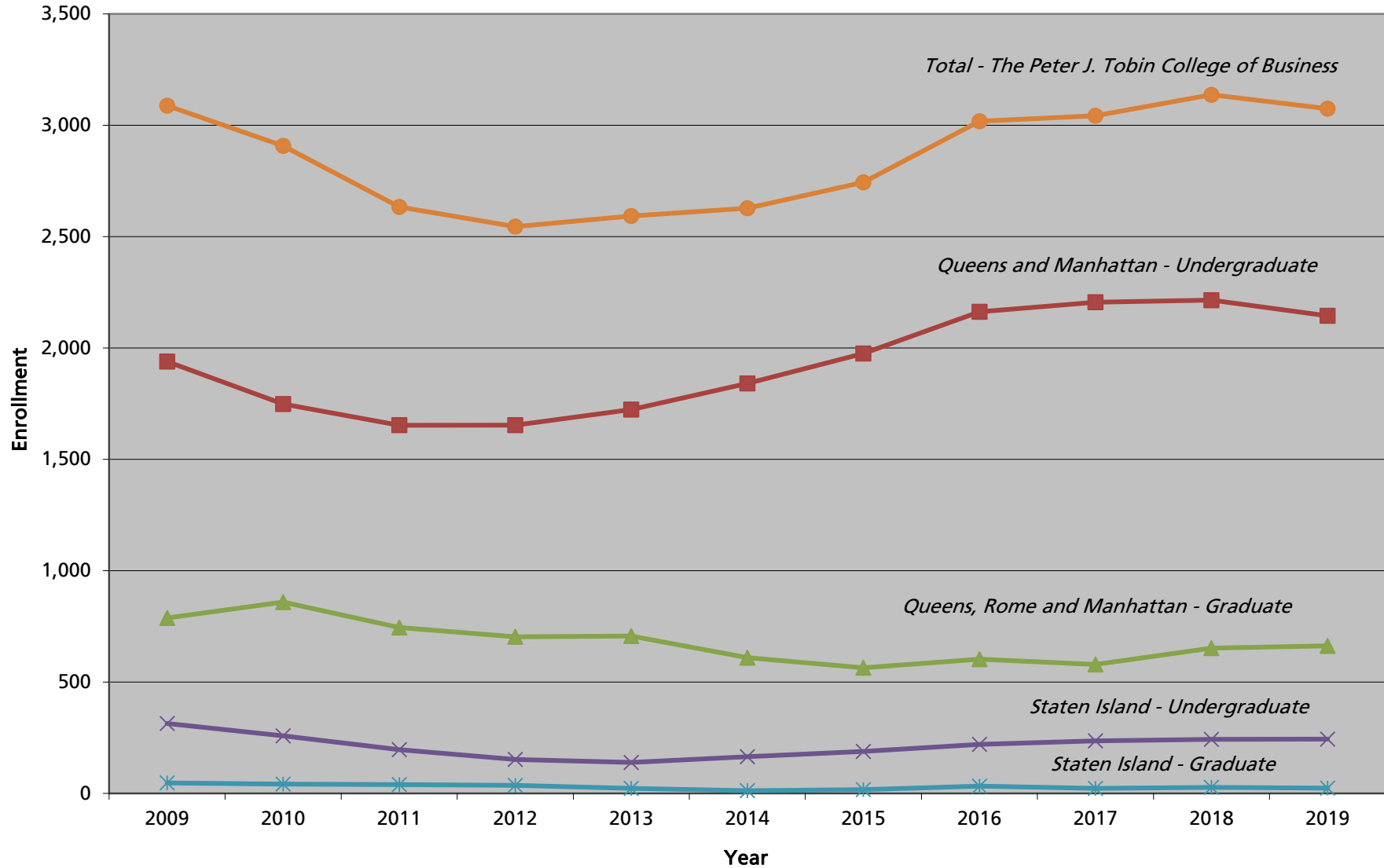
² No longer offered

²³ As of Fall 2015, Teach Lit 5-12 & TESOL K-12 (LTC6) is now Teach Lit 5-12 & TESOL PK-12 (LTCT)

²⁴ As of Fall 2015, Teach Lit B-6 & TESOL K-12 (LTC7) is now Teach Lit B-6 & TESOL PK-12 (LTC9)



The Peter J. Tobin College of Business Student Enrollment Fall 2009 - Fall 2019



Queens Campus											
MAJOR	2009	2010	2011	2012	2013	2014	2015	2016	2017	2018	2019
ACCOUNTING COMBINED	499	467	455	406	396	407	404	412	393	393	371
ACC Accounting (BS)	370	368	390	341	334	323	313	356	319	329	293
ACC2 Accounting (BS/MS)	45	53	27	42	28	54	57	29	42	39	55
ACC3 BS Accounting/MS Tax	65	32	22	8	13	13	21	19	31	25	20
ACCF Accounting/Finance	16	14	16	15	17	8	4	4	1	-	-
ACCM Accounting/Management Info System ²	3	-	-	-	-	-	-	-	-	-	-
ACCZ Accounting (BS)/Business Admin (MBA)	-	-	-	-	4	9	9	4	-	-	-
ACCR Accounting/Risk & Fin Advisory	-	-	-	-	-	-	-	-	-	-	3
ANLT Business Analytics	-	-	-	-	-	-	-	-	-	-	11
BUSN Business	-	-	-	-	-	-	8	225	335	407	472
ECONOMICS COMBINED	74	80	86	104	104	117	128	109	82	67	54
ECO Economics	74	80	86	101	97	112	123	103	75	59	53
ECOY Economic (BS)/Accounting (MS)	-	-	-	-	1	1	2	2	1	-	-
ECOZ Economics/Business Admin (MBA)	-	-	-	3	6	4	3	4	6	8	1
FINANCE COMBINED	436	322	296	300	324	352	375	430	478	449	440
FIN Finance	436	322	296	298	321	347	370	428	470	447	438
FINY BS Finance/MS Accounting	-	-	-	2	3	5	5	2	8	2	2
INTM International Management	-	-	-	-	-	-	-	-	11	17	35
MANAGEMENT COMBINED	307	294	307	315	320	329	363	290	250	197	133
MGT Management	307	294	307	313	317	328	363	290	249	197	133
MGTY BS Management/MS Accounting	-	-	-	2	3	1	-	-	1	-	-
MGT INFO SYSTEMS COMBINED	16	14	11	18	9	1	-	-	-	-	-
MIS Management Information Systems ²	16	14	11	17	3	1	-	-	-	-	-
MISZ Mg Info Systems/Business Admin ²	-	-	-	1	6	-	-	-	-	-	-
MARKETING COMBINED	252	215	208	235	252	278	283	285	309	307	259
MKT Marketing	252	215	208	235	251	277	280	283	307	307	259
MKTY BS Marketing / MS Accounting	-	-	-	-	1	1	3	2	2	-	-
MSC Military Science - Cross Enroll⁴	26	20	28	12	12	3	2	1	2	5	-
RMIZ Risk Management & Ins (BS)/ Bus Admin	-	-	-	-	1	2	2	2	1	-	-
0000 Undecided	133	144	85	68	79	79	111	106	90	75	70
NM Non-Matric	-	2	2	14	9	5	4	-	1	-	1
TOTAL:	1,743	1,558	1,478	1,472	1,506	1,573	1,680	1,860	1,952	1,917	1,846
PERCENT CHANGE:		-10.6%	-5.1%	-0.4%	2.3%	4.4%	6.8%	10.7%	4.9%	-1.8%	-3.7%
Manhattan Campus											
MAJOR	2009	2010	2011	2012	2013	2014	2015	2016	2017	2018	2019
ACT Actuarial Science	110	87	78	89	110	144	165	165	112	102	99
BUSN Business	-	-	-	-	-	-	-	1	1	46	57
INTM International Management	-	-	-	-	-	-	-	-	-	2	4
RMI Risk Management and Insurance	86	103	97	92	107	123	129	133	136	140	131
RMIZ Risk Management & Ins (BS)/ Bus Admin	-	-	-	-	1	1	1	3	3	8	7
RMY1 Risk Mg & Ins (BS)/ Public Act	-	-	-	-	-	-	-	-	1	-	-
NM Non-Matric	-	-	-	1	-	-	-	-	-	-	-
TOTAL:	196	190	175	182	218	268	295	302	253	298	298
PERCENT CHANGE:		-3.1%	-7.9%	4.0%	19.8%	22.9%	10.1%	2.4%	-16.2%	17.8%	0.0%
QUEENS & MANHATTAN TOTAL:	1,939	1,748	1,653	1,654	1,724	1,841	1,975	2,162	2,205	2,215	2,144
PERCENT CHANGE:		-9.9%	-5.4%	0.1%	4.2%	6.8%	7.3%	9.5%	2.0%	0.5%	-3.2%

Notes:

² No longer offered

⁴ Students cross-enrolled at other institutions. Program is in CCPS as of Spring 2019.

Dual degree students are coded within their major codes.



The Peter J. Tobin College of Business (64)
 Student Enrollment - Undergraduate Division
 Staten Island Campus
 Fall 2009 - Fall 2019

MAJOR	2009	2010	2011	2012	2013	2014	2015	2016	2017	2018	2019
ACCOUNTING COMBINED	131	104	87	73	65	86	85	93	102	86	81
ACC Accounting	117	88	78	65	62	83	60	78	80	71	47
ACC2 Accounting (BS/MS)	14	16	9	8	2	1	24	14	22	15	34
ACCF Accounting/Finance ²	-	-	-	-	1	1	-	-	-	-	-
ACCZ Accounting (BS)/Bus Adm (MBA)	-	-	-	-	-	1	1	1	-	-	-
BUSN Business	-	-	-	-	-	-	2	21	26	30	45
FINANCE COMBINED	83	57	31	29	29	29	42	51	54	67	59
FIN Finance	83	57	31	29	29	28	40	47	51	59	53
FINY Finance(BS)/Accounting(MS)	-	-	-	-	-	1	2	4	3	8	6
MANAGEMENT COMBINED	43	42	30	24	18	21	20	18	17	18	19
MGT Management	43	42	30	24	17	21	20	18	17	18	19
MGTY BS Management/MS Accounting	-	-	-	-	1	-	-	-	-	-	-
MARKETING COMBINED	31	28	22	18	17	22	28	28	33	31	30
MKT Marketing	31	28	22	18	17	22	28	27	33	29	29
MKTY BS Marketing/MS Accounting	-	-	-	-	-	-	-	1	-	2	1
MSC Military Science⁴	-	-	1	-	2	-	-	-	-	-	-
0000 Undecided	26	27	25	8	8	7	11	9	4	11	10
TOTAL:	314	258	196	152	139	165	188	220	236	243	244
PERCENT CHANGE:		-17.8%	-24.0%	-22.4%	-8.6%	18.7%	13.9%	17.0%	7.3%	3.0%	0.4%

Notes:

² No longer offered

⁴ Students cross-enrolled at other institutions. Program is in CCPS as of Spring 2019.

Dual degree students are coded within their major codes.

Queens Campus												
MAJOR		2009	2010	2011	2012	2013	2014	2015	2016	2017	2018	2019
Master in Business Administration (MBA)		335	322	278	227	234	212	164	208	235	315	323
BUS	Business Administration	268	274	239	197	207	188	151	190	222	302	313
ANLT	Business Analytics	-	-	-	2	4	3	5	12	21	43	40
CIS	Computer Info Systems / Decision Science	8	10	12	12	12	11	4	10	14	17	15
CON	Controllership	1	3	4	2	2	1	-	3	1	-	-
CIS	Decision Sciences	3	3	2	-	-	-	-	-	-	-	-
FIN	Finance	100	89	88	84	82	67	44	55	58	72	40
GLD	Global Leadership	-	-	-	-	-	-	1	1	1	1	-
IDB	Interdisciplinary Business	-	-	-	-	-	-	3	3	7	34	49
INTB	International Business	37	57	33	14	29	30	23	14	14	24	28
INVA	Investment Analysis	-	-	-	-	-	-	4	2	2	5	7
MGT1	Executive Management	43	32	34	33	38	33	31	42	53	56	49
MGT2	Executive Management	-	-	-	-	-	-	-	-	-	-	-
MGTS	Strategic Management	-	-	-	-	-	-	-	-	-	-	21
MKTM	Marketing Management	74	79	64	48	39	40	34	47	50	47	47
REA	Real Estate	-	-	-	-	-	-	-	-	-	-	3
REF	Real Estate Finance	-	-	-	-	-	-	-	-	-	-	1
RFA	Risk and Financial Advisory	-	-	-	-	-	-	-	-	-	-	4
RMI	Risk Management	-	-	-	-	-	-	-	-	-	3	7
TAX	Taxation	2	1	2	2	1	3	2	1	1	-	2
ACC1/ACC	Public Accounting / Accounting ¹⁶	54	45	39	30	27	24	13	18	13	13	10
FIN	Finance	7	2	-	-	-	-	-	-	-	-	-
MGT1	Executive Management	3	-	-	-	-	-	-	-	-	-	-
MKT	Marketing	3	1	-	-	-	-	-	-	-	-	-
Master in Science (MS)		207	261	219	224	233	199	199	194	177	181	172
ACC	Accounting	123	169	145	130	146	129	117	100	88	81	64
ACC2	Accounting BS/MS	32	25	32	37	38	28	44	47	36	36	32
ENT3	Entrepreneurship & Innovation	-	-	-	-	-	-	-	-	-	-	1
RFA	Risk and Financial Advisory	-	-	-	-	-	-	-	-	-	2	11
TAX	Taxation	52	67	42	57	49	42	38	47	53	62	64
Advanced Certificate (APCRT/ADVCR)		3	2	3	3	3	2	-	-	-	4	9
ACC1	Public Accounting ²	1	-	1	-	-	-	-	-	-	-	-
BUS	Business Administration	-	-	-	-	-	-	-	-	-	4	9
CON	Controllership ²	-	-	-	-	1	1	-	-	-	-	-
FIN	Finance ²	1	2	2	2	1	-	-	-	-	-	-
TAX	Taxation ²	1	-	-	1	1	1	-	-	-	-	-
NM	Non-Matric	-	-	-	-	-	1	-	1	-	1	9
TOTAL QUEENS:		545	585	500	454	470	414	363	403	412	501	513
PERCENT CHANGE:			7.3%	-14.5%	-9.2%	3.5%	-11.9%	-12.3%	11.0%	2.2%	21.6%	2.4%



The Peter J. Tobin College of Business (84)
 Student Enrollment - Graduate Division
 Staten Island Campus
 Fall 2009 - Fall 2019

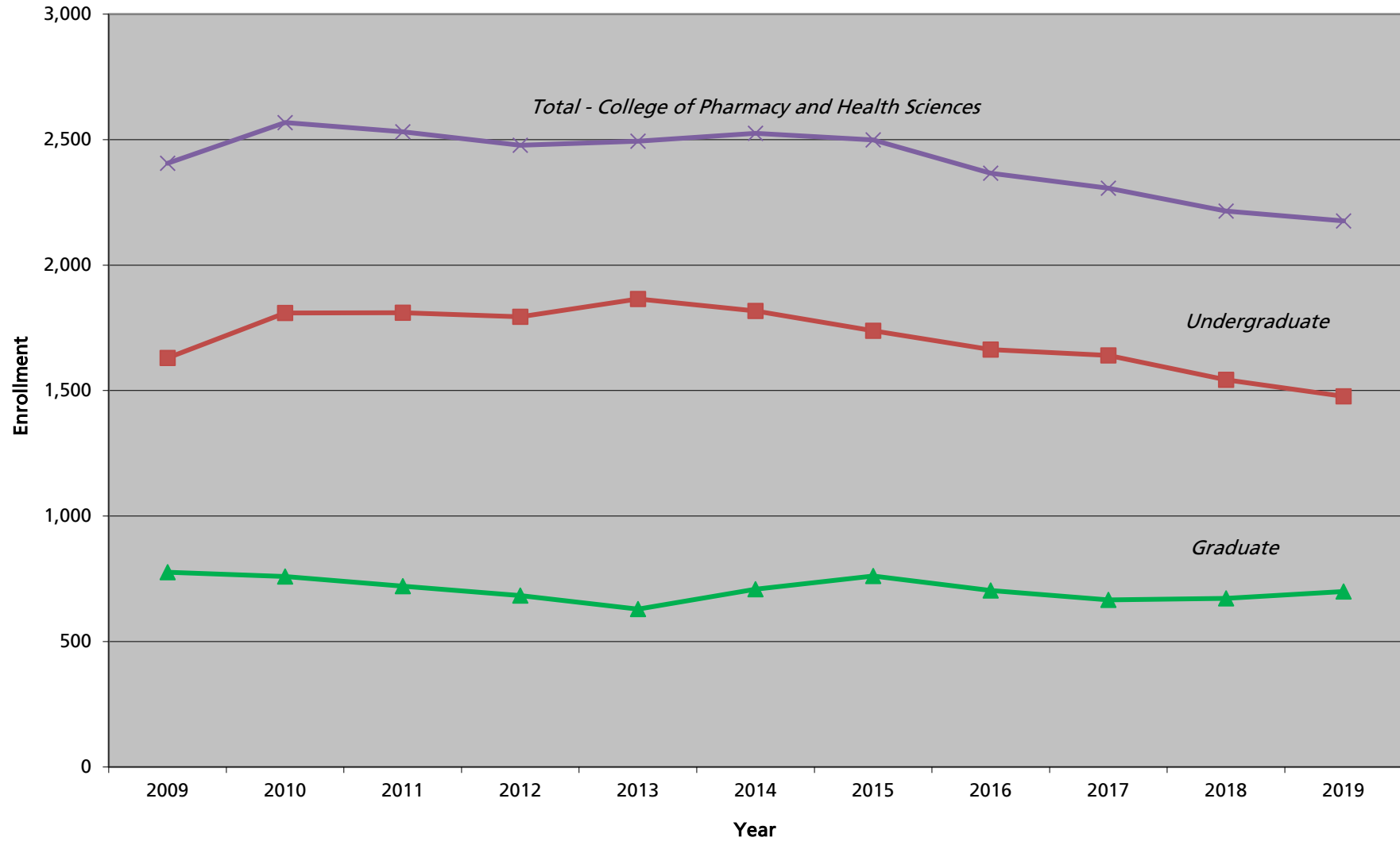
MAJOR	2009	2010	2011	2012	2013	2014	2015	2016	2017	2018	2019
Master in Business Administration (MBA)	34	28	23	25	14	10	6	3	2	2	-
BUS Business Administration	18	11	6	8	2	7	3	1	-	-	-
Con Controllership	-	-	-	-	-	1	1	1	-	-	-
FIN Finance	12	9	5	3	2	1	1	-	-	-	-
MGT1 Executive Management	6	2	1	4	-	5	-	-	-	-	-
MKT Marketing	-	-	-	1	-	-	-	-	-	-	-
MKTM Marketing Management	-	-	-	-	-	-	1	-	-	-	-
ACC1/ACC Public Accounting / Accounting¹⁶	15	16	17	17	12	3	3	2	2	2	-
MGT1 Executive Management	1	1	-	-	-	-	-	-	-	-	-
Master in Science (MS)	13	14	16	11	9	2	11	30	21	25	24
ACC Accounting	1	-	-	-	2	1	3	7	8	2	11
ACC2 Accounting BS/MS	11	13	16	11	7	1	8	23	13	23	13
TAX Taxation	1	1	-	-	-	-	-	-	-	-	-
TOTAL:	47	42	39	36	23	12	17	33	23	27	24
PERCENT CHANGE:		-10.6%	-7.1%	-7.7%	-36.1%	-47.8%	41.7%	94.1%	-30.3%	17.4%	-11.1%

Notes:

¹⁶ As of Fall 2018, MBA Public Accounting (ACC1) is now MBA Accounting (ACC)



College of Pharmacy and Health Sciences Student Enrollment Fall 2009 - Fall 2019





College of Pharmacy and Health Sciences (05)
 Student Enrollment - Undergraduate Division
 Queens Campus
 Fall 2009 - Fall 2019

MAJOR	2009	2010	2011	2012	2013	2014	2015	2016	2017	2018	2019
<i>BMS Biomedical Sciences</i>	-	-	-	-	-	-	-	-	119	190	248
<i>CLSC Clinical Laboratory Sciences³¹</i>	63	51	38	24	31	37	45	45	38	40	27
<i>PHA6 Pharmacy - 6 Yr PharmD</i>	1,073	1,199	1,197	1,176	1,230	1,152	1,108	1,057	972	955	938
<i>PNT Physician Assistant</i>	381	373	383	409	420	376	379	384	361	230	144
<i>RAD Radiologic Sciences</i>	57	108	127	132	113	113	116	116	105	90	93
<i>TOX Toxicology</i>	56	78	65	52	56	48	71	61	45	38	27
<i>NM Non-Matric</i>	-	-	-	1	15	91	19	-	-	-	-
TOTAL:	1,630	1,809	1,810	1,794	1,865	1,817	1,738	1,663	1,640	1,543	1,477
PERCENT CHANGE:		11.0%	0.1%	-0.9%	4.0%	-2.6%	-4.3%	-4.3%	-1.4%	-5.9%	-4.3%

Note:

³¹ As of Fall 2011, Medical Technology (MED) is now Clinical Laboratory Sciences (CLSC)



College of Pharmacy and Health Sciences (25)
 Student Enrollment - Graduate Division
 Queens Campus
 Fall 2009 - Fall 2019

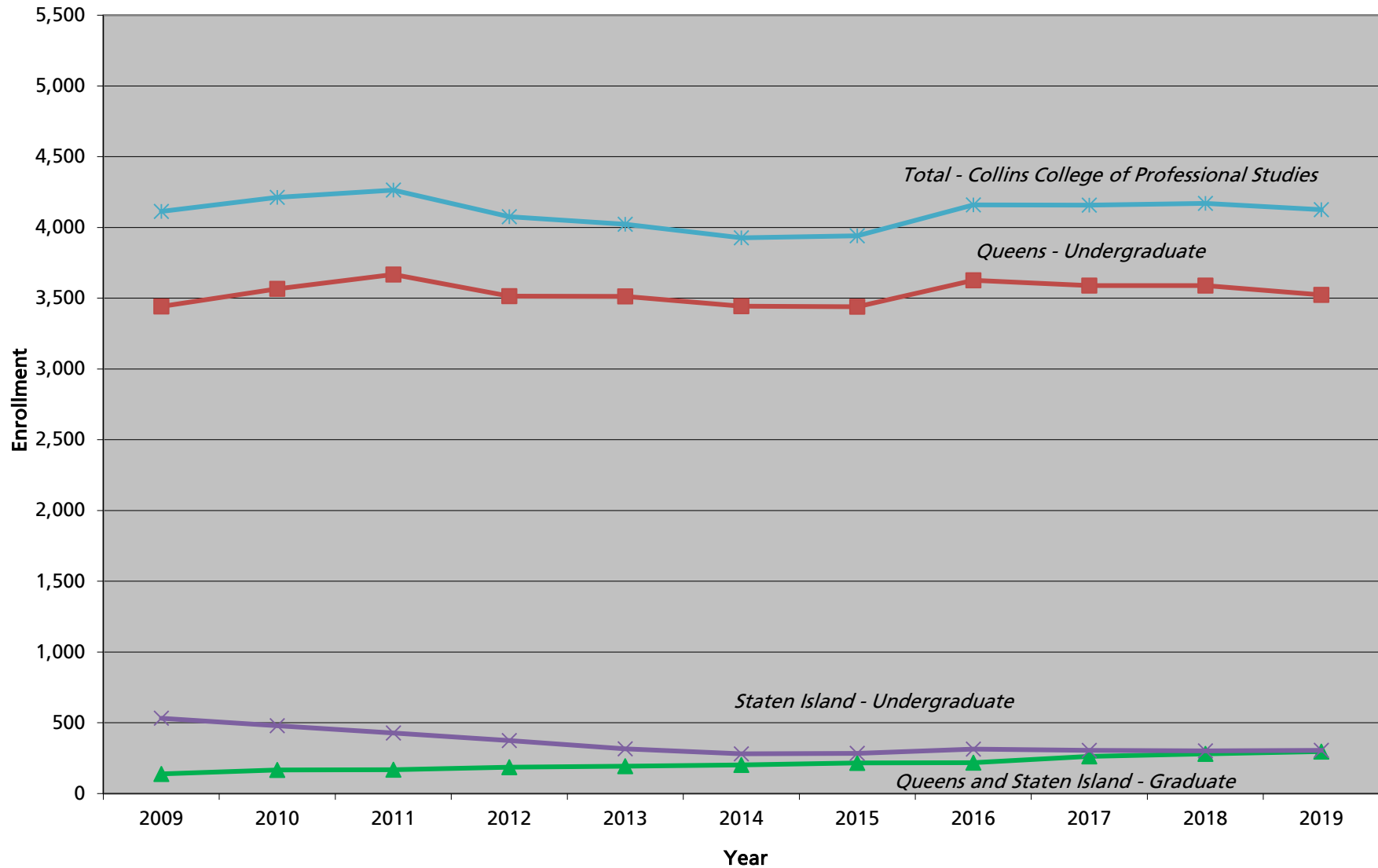
MAJOR	2009	2010	2011	2012	2013	2014	2015	2016	2017	2018	2019
PHA1 <i>Pharmaceutical Sciences (MS and PhD)</i>	176	184	174	172	144	117	117	118	125	135	127
PHARMACY COMBINED	567	544	520	489	456	558	611	540	507	511	476
PHA2 Pharmacy Administration	65	46	31	25	26	27	19	32	25	12	6
PHA6 Pharmacy - 6Yr PharmD	489	494	489	464	430	531	592	508	482	499	470
PHA9 Pharmacy, Practitioner Option ²	13	4	-	-	-	-	-	-	-	-	-
PUBH <i>Public Health</i>	-	-	-	-	6	14	20	29	21	15	15
PNT <i>Physician Assistant</i>	-	-	-	-	-	-	-	-	-	-	75
TOX <i>Toxicology</i>	32	28	23	20	20	17	13	16	13	11	6
NM <i>Non-Matric</i>	1	3	4	2	3	2	-	-	-	-	-
TOTAL:	776	759	721	683	629	708	761	703	666	672	699
PERCENT CHANGE:		-2.2%	-5.0%	-5.3%	-7.9%	12.6%	7.5%	-7.6%	-5.3%	0.9%	4.0%

Notes:

² No longer offered



Collins College of Professional Studies Student Enrollment Fall 2009 - Fall 2019





Collins College of Professional Studies (03)
 Student Enrollment - Undergraduate Division
 Queens Campus
 Fall 2009 - Fall 2019

MAJOR		2009	2010	2011	2012	2013	2014	2015	2016	2017	2018	2019
ADS	Administrative Studies	44	30	45	46	50	56	59	44	54	54	71
ADVERTISING COMMUNICATION COMBINED		125	124	113	116	116	107	118	119	103	103	87
ADVC	Advertising Communication (Creative Trk)	106	79	60	58	60	58	64	64	58	55	58
ADVM	Advertising Communication (Acc. Mgt)	11	32	33	29	24	20	25	26	28	31	20
ADVP	Advertising Communication (Media Planning)	8	13	20	29	32	29	29	29	17	17	9
BUSINESS COMBINED		65	89	58	41	41	34	16	4	4	20	25
BUS	Business Administration (AS)	65	89	58	41	41	34	16	4	4	20	25
COMMUNICATION ARTS COMBINED		330	342	349	351	331	354	406	406	388	346	314
CAS	Communication Arts	329	341	349	345	328	350	398	396	376	334	306
CAS1	Communication Arts/Sociology	1	1	-	4	2	3	4	4	4	1	2
CAS2	Communication Arts/Gov&Politic	-	-	-	2	1	1	4	2	2	2	1
CAS3	Communication Arts/ICM	-	-	-	-	-	-	-	4	6	9	5
COMPUTER SCIENCE & IT COMBINED		235	243	256	230	249	318	381	460	475	508	501
CUS	Computer Science	126	122	110	94	103	153	167	208	202	206	199
CUS2/CUSB	Computer Science (Business Administration)	20	18	24	22	30	38	51	54	48	56	48
CUS3/CUST	Computer Science (Networking & Telecom.)	6	5	10	6	7	9	7	9	7	8	6
CUSC	Computer Science (Corporate Security)	1	1	-	-	-	-	-	-	-	-	-
CUSD	Computer Science(BS)/DMPA(MS)	-	-	-	-	-	-	-	-	-	1	-
CUSF	Computer Science (Cyber Forensics)	3	2	2	1	-	-	-	-	-	-	-
CUSG	Computer Science (Media Graphics)	2	2	2	2	-	-	-	-	-	-	-
CUSH	Computer Science (Healthcare Informatics)	-	-	-	1	-	2	7	5	3	1	1
CUSM	Computer Science (Mathematics)	1	3	1	-	-	-	-	-	-	-	-
CUSS	Computer Science (Security Systems)	7	7	8	14	12	10	22	37	42	55	67
CUSW	Computer Science (Web Services)	-	2	3	1	2	3	4	3	3	-	-
CUSY	Computer Science(BS)/Accounting(MS)	-	-	-	-	-	-	1	1	1	2	-
CUSZ	Computer Science (Business Administration)	-	-	-	4	7	7	10	7	3	2	3
CDSC	Comp Sci (BS)/Data Sci (MS)	-	-	-	-	-	-	-	-	-	-	2
CSS/CYB	Cyber Security Systems	33	54	69	63	66	63	79	89	115	132	141
CYBY	Cyber Security Systems/Accounting (MS)	-	-	-	-	-	2	2	2	1	-	-
CSSZ/CYBZ	Cyber Security Systems/Business Admin	-	-	-	2	3	3	5	5	5	5	4
IT	Information Technology	16	6	2	1	1	-	-	1	-	2	2
ITB	Information Technology (Business)	14	18	23	15	16	26	26	37	44	38	26
ITC	Information Technology (Corporate Security)	1	-	-	-	-	-	-	-	-	-	-
ITF	Information Technology (Cyber Forensics)	1	2	-	1	-	-	-	-	-	-	-
ITG	Information Technology (Graphic Design)	2	1	2	2	1	-	-	-	-	-	-
ITS	Information Technology (Security Systems)	2	-	-	-	-	-	-	-	-	-	-
ITY	Information Technology BS/Acc (MS)	-	-	-	-	-	-	-	-	-	-	1
ITZ	Information Technology/Business Admin	-	-	-	1	1	2	-	2	1	-	1
CRIMINAL JUSTICE COMBINED		364	395	425	443	442	394	389	421	456	473	503
CRJ	Criminal Justice (BS)	303	310	339	341	341	285	299	323	350	347	373
CRJ1	Criminal Justice (AS)	7	12	8	1	2	1	3	3	3	6	10
CRJ2	Criminal Justice/Sociology	2	2	-	8	6	10	7	9	2	1	3
CRJ3	Criminal Justice/Gov't & Polit	-	1	-	2	2	2	2	-	2	1	-
CRJF	Criminal Justice (Forensic Psychology)	52	70	78	91	81	86	70	72	90	110	104
CRJL/CRJH	CRJ/Homeland Sec & Criminal Justice Leader ³²	-	-	-	-	10	10	8	14	9	8	13
DAFT	Dramatic Arts, Film & Television²	-	2	10	30	39	35	12	6	3	-	-
ENTR	Enterprise Reg: Profit & Non-Profit	-	2	21	19	15	19	18	20	24	25	29
FAS	Fashion Studies	-	-	-	-	-	-	-	-	-	4	37
FSA	Funeral Service Administration²	5	7	8	8	10	3	2	1	-	-	-
HCI	Healthcare Informatics	-	6	11	14	20	18	16	15	17	17	6
HLS	Homeland Security	17	43	79	96	111	147	157	175	182	181	188



Collins College of Professional Studies (03)
 Student Enrollment - Undergraduate Division
 Queens Campus
 Fall 2009 - Fall 2019

MAJOR		2009	2010	2011	2012	2013	2014	2015	2016	2017	2018	2019
HEALTH SERVICES & HUMAN SERVICES COMBINED		143	135	126	145	166	168	162	167	154	161	139
HSA	Health Services Administration ²	105	87	59	23	6	2	-	-	-	-	-
HHS	Health and Human Services	-	15	57	119	160	166	162	167	154	161	139
HSC	Human Services ²	38	33	10	3	-	-	-	-	-	-	-
HMT	Hospitality Management	116	111	94	97	89	91	102	96	75	65	67
JOURNALISM COMBINED		179	185	183	161	166	134	142	158	146	121	123
JOU	Journalism	179	184	182	158	165	133	138	154	141	117	122
JOU1	Journalism/Sociology	-	1	-	1	-	-	2	2	3	1	-
JOU2	Journalism - Government & Politics	-	-	1	2	1	1	2	2	2	3	1
LAS	Liberal Arts (AA)	38	34	25	16	11	9	10	7	5	18	19
LEGAL STUDIES COMBINED		380	390	399	366	360	351	335	340	346	376	373
LES	Legal Studies (BS)	371	384	392	360	351	337	316	329	339	367	366
LES1	Legal Studies (AS)	6	5	6	4	1	1	3	4	2	5	5
LES2	Legal Studies/Sociology	1	1	-	1	4	7	6	2	3	4	2
LES3	Legal Studies/Gov & Politics	1	-	-	1	4	6	10	5	2	-	-
LES9	Legal Studies (Certificate)	1	-	1	-	-	-	-	-	-	-	-
LST	Liberal Studies	585	604	603	477	410	311	188	229	260	239	207
MSC	Military Science - Cross Enroll	-	-	-	-	-	-	-	-	-	-	3
NETWORKING/TELECOMMUNICATION COMBINED		12	12	15	15	11	8	9	8	7	6	9
NET	Networking & Telecommunication	9	12	15	15	11	8	9	8	7	6	9
TEL	Telecommunications (BS) ²	2	-	-	-	-	-	-	-	-	-	-
TELG	Telecommunications (Media Graphics) ²	1	-	-	-	-	-	-	-	-	-	-
PHOJ	Photojournalism	-	1	12	18	22	19	17	22	16	23	18
PUBR	Public Relations	140	162	204	184	181	183	184	159	141	142	126
SPM	Sport Management	383	413	428	425	430	414	420	419	392	351	363
SSC	Social Science²	-	1	-	-	-	-	-	-	-	-	-
TELEVISION COMBINED		196	190	157	146	139	145	156	156	154	154	140
TVF	Television and Film Prod (BS)	194	190	157	146	138	144	156	155	153	152	139
TVF1	Television And Film (AS)	2	-	-	-	1	1	-	1	1	2	1
0000	Undecided	84	46	47	44	97	110	134	193	185	175	148
NM	Non-Matric	1	-	-	27	7	16	7	2	2	27	28
TOTAL:		3,442	3,567	3,668	3,515	3,513	3,444	3,440	3,627	3,589	3,589	3,524
PERCENT CHANGE:			3.6%	2.8%	-4.2%	-0.1%	-2.0%	-0.1%	5.4%	-1.0%	0.0%	-1.8%

Notes:

² No longer offered

³² As of Fall 2016, Criminal Justice/Criminal Justice Leader (CRJL) is now Criminal Justice/Homeland Security & Criminal Justice Leader (CRJH)

Dual Degree Students are coded within their major codes.

Queens figures include Online Learning Students. Please refer to the Online Learning Enrollment Reports.



Collins College of Professional Studies (53)
 Student Enrollment - Undergraduate Division
 Staten Island Campus
 Fall 2009 - Fall 2019

MAJOR	2009	2010	2011	2012	2013	2014	2015	2016	2017	2018	2019
ADS <i>Administrative Studies</i>	5	3	2	2	2	2	3	-	2	3	2
ADVERTISING COMMUNICATION	4	4	6	7	6	1	3	2	4	1	3
ADVC Advertising Communication (Creative Trk)	2	3	4	6	4	1	1	-	3	1	2
ADVM Advertising Communication (Acc. Mgt)	1	1	2	1	2	-	-	1	-	-	-
ADVP Advertising Communication (Media Planning)	1	-	-	-	-	-	2	1	1	-	1
BUS <i>Business Administration (AS)</i>	8	3	1	7	1	4	3	5	5	5	5
COMMUNICATION ARTS COMBINED	96	76	68	69	47	41	56	56	52	50	47
CAS Communication Arts	96	76	68	68	45	39	55	56	51	50	47
CAS1 Communication Arts/Sociology	-	-	-	1	1	1	-	-	1	-	-
CAS2 Communication Arts/Government and Politics	-	-	-	-	1	1	1	-	-	-	-
CRIMINAL JUSTICE COMBINED	87	92	95	77	70	68	71	94	94	82	98
CRJ Criminal Justice	76	83	87	70	61	50	51	62	65	54	60
CRJ1 Criminal Justice (AS)	3	1	1	2	1	2	3	2	2	-	1
CRJ2 Criminal Justice/Sociology	-	-	-	-	-	1	-	-	-	-	-
CRJ3 Criminal Justice/Gov't & politics	-	-	-	-	-	1	1	1	-	-	-
CRJF Criminal Justice (Forensic Psychology)	8	8	7	5	8	9	6	8	10	13	16
CRJL/CRJH CRJ/Homeland Sec & Criminal Justice Leader ³²	-	-	-	-	-	5	10	21	17	15	21
FAS <i>Fashion Studies</i>	-	-	-	-	-	-	-	-	-	-	1
FSA <i>Funeral Service Admin²</i>	7	4	5	6	5	3	1	1	-	-	-
HLS <i>Homeland Security</i>	1	4	5	7	9	12	11	10	14	25	31
HMT <i>Hospitality Management</i>	27	20	19	10	7	8	8	9	15	13	12
JOU <i>Journalism</i>	5	11	9	5	7	8	4	3	2	5	1
LEGAL STUDIES COMBINED	88	58	48	50	38	26	21	26	29	36	37
LES Legal Studies (BS)	86	57	46	47	36	26	21	25	28	36	37
LES1 Legal Studies (AS)	2	-	2	2	1	-	-	-	-	-	-
LES3 Legal Studies/Gov & Politics	-	-	-	1	1	-	-	1	1	-	-
LES9 Legal Studies (CERT)	-	1	-	-	-	-	-	-	-	-	-
LST <i>Liberal Studies</i>	116	123	95	65	73	53	52	48	32	25	14
PUBR <i>Public Relations</i>	3	4	10	6	7	8	4	5	5	5	4
SPM <i>Sport Management</i>	40	42	32	34	22	22	21	24	27	19	27
TEL <i>Telecommunications (BS)²</i>	1	1	1	-	-	-	-	-	-	-	-
TELEVISION COMBINED	17	19	21	22	15	16	15	7	7	9	8
TVF Television and Film Prod (BS)	17	19	21	22	14	15	14	7	7	9	8
TVF1 Television and Film Prod (AS)	-	-	-	-	1	1	1	-	-	-	-
0000 <i>Undecided</i>	27	16	10	5	7	9	10	22	17	23	13
NM <i>Non-Matric</i>	-	-	-	3	-	-	1	2	1	-	2
TOTAL:	532	480	427	375	316	281	284	314	306	301	305
PERCENT CHANGE:		-9.8%	-11.0%	-12.2%	-15.7%	-11.1%	1.1%	10.6%	-2.5%	-1.6%	1.3%

Note:
² No longer offered
³² As of Fall 2016, Criminal Justice/Criminal Justice Leader (CRJL) is now Criminal Justice/Homeland Security & Criminal Justice Leader (CRJH)

Dual Degree Students are coded within their major codes.

Based on data as of 10/14/2019



Collins College of Professional Studies
Student Enrollment - Graduate Division
Fall 2009 - Fall 2019

Queens Campus (23)											
MAJOR	2009	2010	2011	2012	2013	2014	2015	2016	2017	2018	2019
ADVI Integrated Advertising Comm	-	-	-	-	-	-	-	-	-	-	14
CUS Computer Science	-	-	-	-	-	-	-	-	-	-	3
DMPA/DSC Data Science	-	-	-	-	-	14	33	34	41	44	34
CRL/HCJL Homeland Security & Criminal Justice Leadership ³³	52	57	46	61	64	65	62	57	79	81	83
HLS Homeland Security (DPS)	-	-	-	-	-	-	-	-	-	9	19
HCA3 Health Care System	-	-	-	-	-	-	-	-	-	-	10
ICM International Communications	26	35	39	45	43	44	39	41	50	53	48
IHM International Hospitality Mgmt	-	-	-	-	-	-	-	-	-	-	8
SPM Sport Management	45	58	66	71	81	74	75	70	79	77	66
NM Non-Matric	-	-	7	3	2	3	-	5	1	-	2
TOTAL:	123	150	158	180	190	200	209	207	250	264	287
PERCENT CHANGE:		22.0%	5.3%	13.9%	5.6%	5.3%	4.5%	-1.0%	20.8%	5.6%	8.7%

Staten Island Campus (83)											
MAJOR	2009	2010	2011	2012	2013	2014	2015	2016	2017	2018	2019
CRL/HCJL Homeland Security & Criminal Justice Leadership ³³	12	14	10	7	3	2	8	10	11	16	10
0000 Undecided	1	-	-	-	-	-	-	-	-	-	-
NM Non-Matric	3	2	1	-	1	-	-	1	1	-	-
TOTAL:	16	16	11	7	4	2	8	11	12	16	10
PERCENT CHANGE:		0.0%	-31.3%	-36.4%	-42.9%	-50.0%	300.0%	37.5%	9.1%	33.3%	-37.5%
Queens and Staten Island Total:	139	166	169	187	194	202	217	218	262	280	297
PERCENT CHANGE:		19.4%	1.8%	10.7%	3.7%	4.1%	7.4%	0.5%	20.2%	6.9%	6.1%

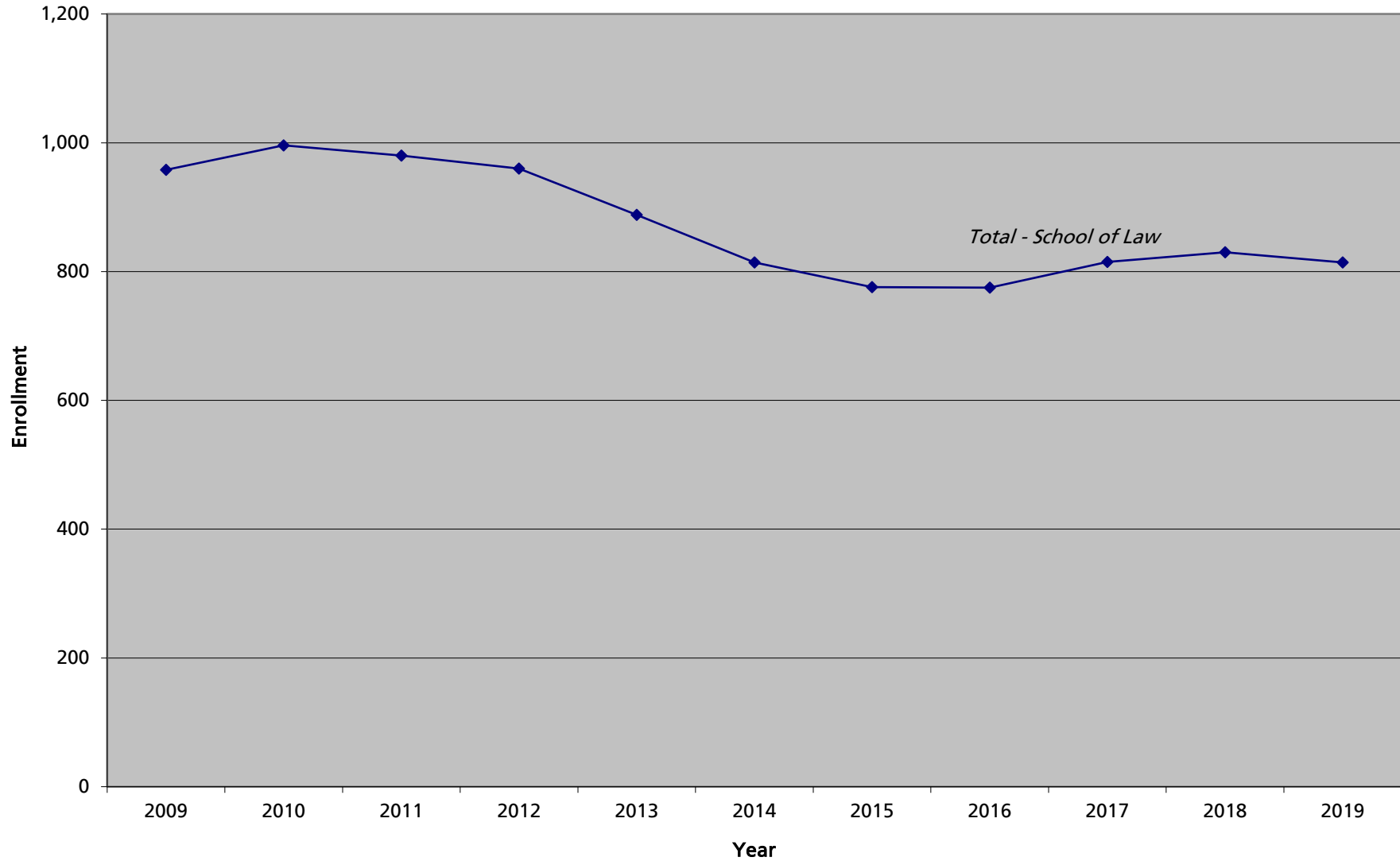
Note:

³³ As of Fall 2016, Criminal Justice Leadership (CRL) is now Homeland Security & Criminal Justice Leadership (HCJL)

Queens figures include Online Learning Students. Please refer to the Online Learning Enrollment Reports.



School of Law Student Enrollment Fall 2009 - Fall 2019





School of Law (28)
 Student Enrollment - Graduate Division
 Queens Campus
 Fall 2009 - Fall 2019

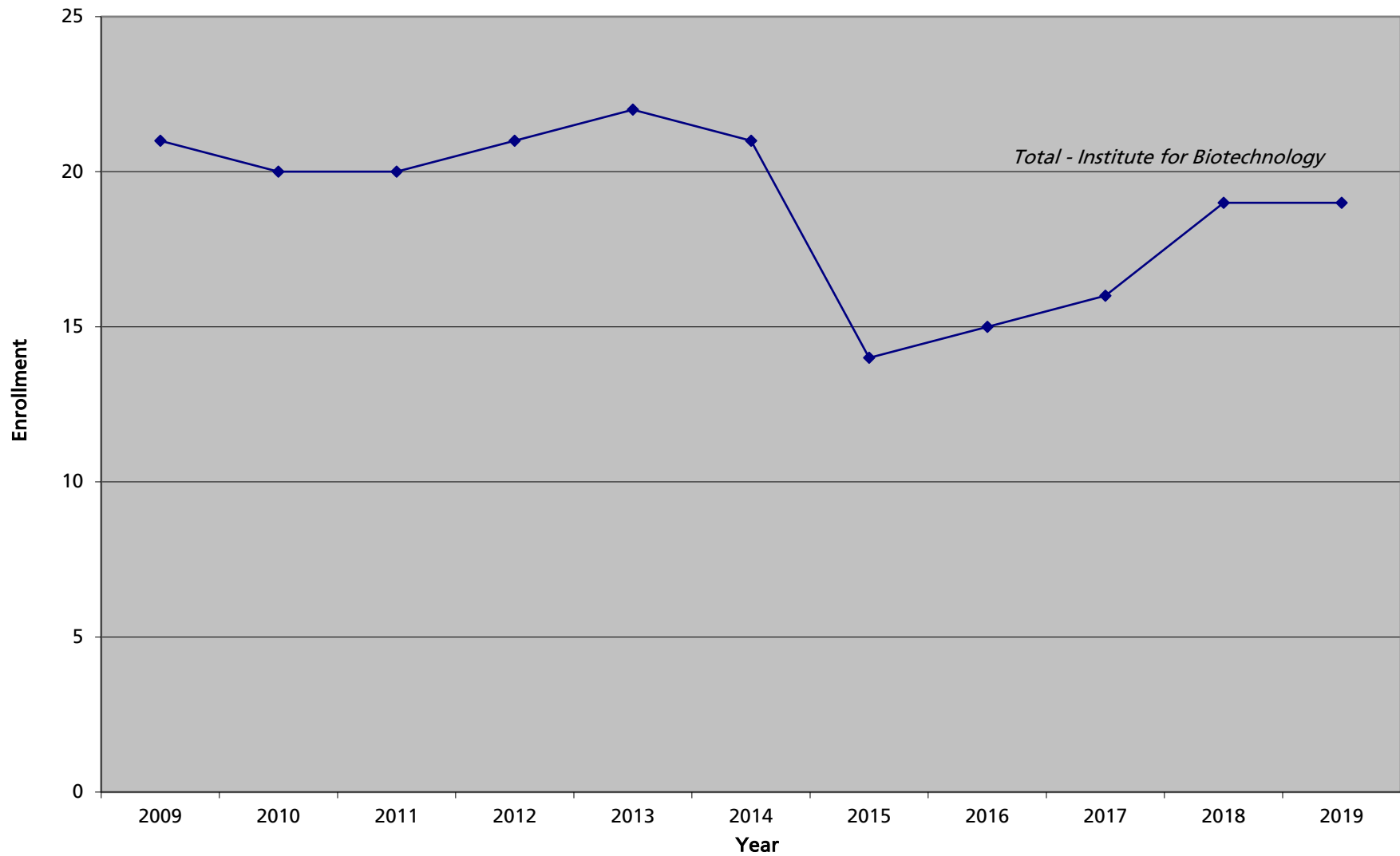
MAJOR	2009	2010	2011	2012	2013	2014	2015	2016	2017	2018	2019
LAW Law	922	949	936	890	803	745	718	705	731	743	759
LLM2 Transnl Leg Prac&Leg Eng 2 sem	-	-	-	-	-	-	-	-	-	-	2
LLMB Bankruptcy (LLM)	28	29	29	28	20	12	8	9	6	13	12
LLME Transnational Legal Practice & Leg English	-	-	-	-	-	-	-	-	-	3	8
LLMP International Sports Law (LLM) ²	-	-	-	13	18	9	6	4	-	-	-
LLMS Intern and Comparative Sports Law ²	-	-	-	-	-	-	-	1	-	-	-
LLMT Transnational Legal Practice (LLM)	-	-	-	9	18	26	23	43	60	41	17
LLMU US Legal Studies Foreign Law Grd (LLM)	7	18	15	20	24	19	16	9	18	24	12
NM Non-Matric	1	-	-	-	5	3	5	4	-	6	4
TOTAL:	958	996	980	960	888	814	776	775	815	830	814
PERCENT CHANGE:		4.0%	-1.6%	-2.0%	-7.5%	-8.3%	-4.7%	-0.1%	5.2%	1.8%	-1.9%

Notes:

² No longer offered



Institute of Biotechnology Student Enrollment Fall 2009 - Fall 2019





Institute for Biotechnology (39)
 Student Enrollment - Graduate Division
 Queens Campus
 Fall 2009 - Fall 2019

MAJOR	2009	2010	2011	2012	2013	2014	2015	2016	2017	2018	2019
BIOT Biological/ Pharmaceutical Biot	21	20	20	21	22	21	14	15	16	19	19
TOTAL:	21	20	20	21	22	21	14	15	16	19	19
PERCENT CHANGE:		-4.8%	0.0%	5.0%	4.8%	-4.5%	-33.3%	7.1%	6.7%	18.8%	0.0%



Special and Opportunity Programs (09)
 Student Enrollment - Undergraduate Division
 Queens and Staten Island Campuses
 Fall 2009 - Fall 2019

Queens Campus											
MAJOR	2009	2010	2011	2012	2013	2014	2015	2016	2017	2018	2019
CA1 College Advantage Program	1,911	2,803	2,981	3,475	3,519	3,437	3,692	3,580	3,808	3,753	3,937
TOTAL:	1,911	2,803	2,981	3,475	3,519	3,437	3,692	3,580	3,808	3,753	3,937
PERCENT CHANGE:		46.7%	6.4%	16.6%	1.3%	-2.3%	7.4%	-3.0%	6.4%	-1.4%	4.9%

Staten Island Campus											
MAJOR	2009	2010	2011	2012	2013	2014	2015	2016	2017	2018	2019
CA1 College Advantage Program	666	706	945	1,031	984	1,246	1,154	1,036	1,162	1,133	1,383
ESA Early Start Academy	-	-	-	-	-	-	-	28	8	-	-
NM Non-Matric ¹⁴	-	-	-	-	-	-	37	-	-	-	-
TOTAL:	666	706	945	1,031	984	1,246	1,191	1,064	1,170	1,133	1,383
		6.0%	33.9%	9.1%	-4.6%	26.6%	-4.4%	-10.7%	10.0%	-3.2%	22.1%

QUEENS & STATEN ISLAND TOTAL:	2,577	3,509	3,926	4,506	4,503	4,683	4,883	4,644	4,978	4,886	5,320
PERCENT CHANGE:		36.2%	11.9%	14.8%	-0.1%	4.0%	4.3%	-4.9%	7.2%	-1.8%	8.9%

Note: Figures also include students enrolled as High School Scholars.
¹⁴ These students are from Tottenville HS and are taking courses on campus.