



ST. JOHN'S  
UNIVERSITY

THE PETER J. TOBIN  
COLLEGE OF BUSINESS

THE PAUL AND CAROL EVANSON CAREER SERVICES CENTER  
8000 UTOPIA PARKWAY  
QUEENS, NY 11439  
718-990-6375

NOREAN R. SHARPE, PH.D.  
*Dean*

*Joseph H. and Maria C. Schwartz Distinguished Chair*

PATRICK HOLTON, B.A.  
*Director, Employer Relations*

JENNIFER FRIARY, M.A.  
*Career and Internship Advisor*

ROBERT BEAUDET, M.B.A.  
*Career and Internship Advisor*

MAUREEN KERR, M.A.  
*Career Advisor*



ST. JOHN'S  
UNIVERSITY

CAREER SERVICES



ST. JOHN'S  
UNIVERSITY

THE PETER J. TOBIN  
COLLEGE OF BUSINESS

# 2018 BUSINESS UNDERGRADUATE CAREER PLACEMENT AND ENGAGEMENT REPORT





## NOTE FROM THE DEAN



As Dean of The Peter J. Tobin College of Business at St. John's University, I am pleased to present the 2018 Business Undergraduate Career Placement and Engagement Report. Thanks to a dedicated and talented team of faculty and staff, we have collaborated to create new programs, recruit experienced faculty, and place students in quality, full-time positions. Our Lesley and William Collins Business Analytics Lab, and our Paul and Carol Evanson Career Services Center, have both advanced career opportunities for our students, as reflected by a near-perfect placement rate, an average salary of close to \$60,000, and an enviable record of placing our graduates at top-level firms in the industries of their choice in the New York metropolitan area.

For those who choose to pursue graduate study, we continue to meet the rising challenges in higher education at the state, federal, and global levels by focusing on the cost-effectiveness of our programs, such as our Part-Time M.B.A., Fast-Track M.B.A., and Fast-Track M.S. programs. These degrees save students time and money by shortening the path to completion, and help keep us competitive with our peers. In addition, we are integrating the discipline of analytics into our programs such as our M.B.A. in Analytics, our M.B.A.s in Real Estate and Real Estate Finance, and our M.S. in Risk Management and Risk Analytics.

I invite you to explore what a Tobin education can do for you. To learn more about career opportunities, contact Patrick Holton, Director of Employer Relations, at [holtonp@stjohns.edu](mailto:holtonp@stjohns.edu) or 718-990-1324.

Noreen R. Sharpe, Ph.D.  
Dean

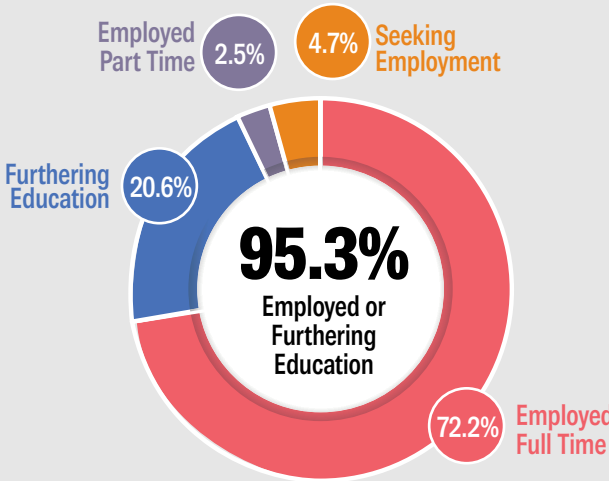
*Joseph H. and Maria C. Schwartz Distinguished Chair*

### Tobin Experiential Programs

- Executive-in-Residence Program (EIRP):** Provides students external opportunities to engage in real-world business consulting with actual for-profit and nonprofit organizations.
- Student Managed Investment Fund (SMIF):** Gives students a hands-on experience at performing investment research, investing money, and managing a portfolio prior to entering the workforce.
- Global Loan Opportunities for Budding Entrepreneurs (GLOBE):** Educates students about the world of microfinance, while providing loans to entrepreneurs in the developing world.

## CLASS OF 2017 BY THE NUMBERS

Snapshot of The Peter J. Tobin College of Business Undergraduate Career Placement and Engagement with University Career Services



### Average Salary

\$58,597

### Top Employers

Aspen Insurance  
Barclays  
Broadridge  
Deloitte  
EY  
Grant Thornton LLP  
JPMorgan Chase & Co.  
KPMG LLP  
Marsh, LLC  
New York Life Insurance Co.  
Protiviti Inc.  
PwC  
Swiss Re  
Synchrony  
Willis Towers Watson

### Engagement with Career Services

79.5%

73.5%

Events

Advisement

41.8%

## 2018 HIGHLIGHTS

### Workshops and Events

- Alumni Insider's View... Day on Wall Street
- Alumni Networking Event
- Behind the Scenes of Business
- Career Fairs
- Classroom Presentations
- Corporate Information Sessions
- Corporate Site Visits
- How I Found My Internship Panel
- Interview Workshops
- MBA Finance Trek
- MarketingEDGE
- Marketing Workshop Series
- Meet the Firms
- Polishing Your Skills Series
- Speed Résumé Review
- Women in Leadership Breakfast

### On-Campus Recruitment

Representatives from more than 200 companies visited campus. Below is a list of our top employers:

- AIG
- Andersen Tax LLC
- Baker Tilly Virchow Krause, LLP
- Bank of America
- Bank of China
- Barclays
- BDO USA LLP
- Berdan LLP
- Broadridge
- Buchbinder Tunick Co.
- CA Technologies
- Citi
- Citrin Cooperman
- CNA Insurance
- CohnReznick LLP
- Deloitte
- Deutsche Bank
- DTCC
- EisnerAmper LLP
- EY
- GEICO
- Grant Thornton LLP
- Guggenheim Partners
- Henry Schein
- HSBC
- Janover LLC
- JPMorgan Chase & Co.
- KPMG LLP
- Loeb & Troper LLP
- Lutz and Carr Certified Public Accountants, LLP
- Macquarie Group
- Margolin, Winer & Evens LLP
- Mazars USA LLP
- Mercer
- Morgan Stanley
- MUFG
- Munich Re
- New York Life Insurance Company
- Nomura Securities
- The Progressive Group of Insurance Companies
- Protiviti Inc.
- PwC
- RSM US LLP
- Schwartz & Company LLP
- Swiss Re
- Synchrony Financial
- The Travelers Indemnity Company
- TTI, Inc.
- UBS Financial Services
- Wells Fargo
- Wiss & Company, LLP
- WithumSmith+Brown, PC