



Fact Book

Fall 2006

Enrollment Trend

Report



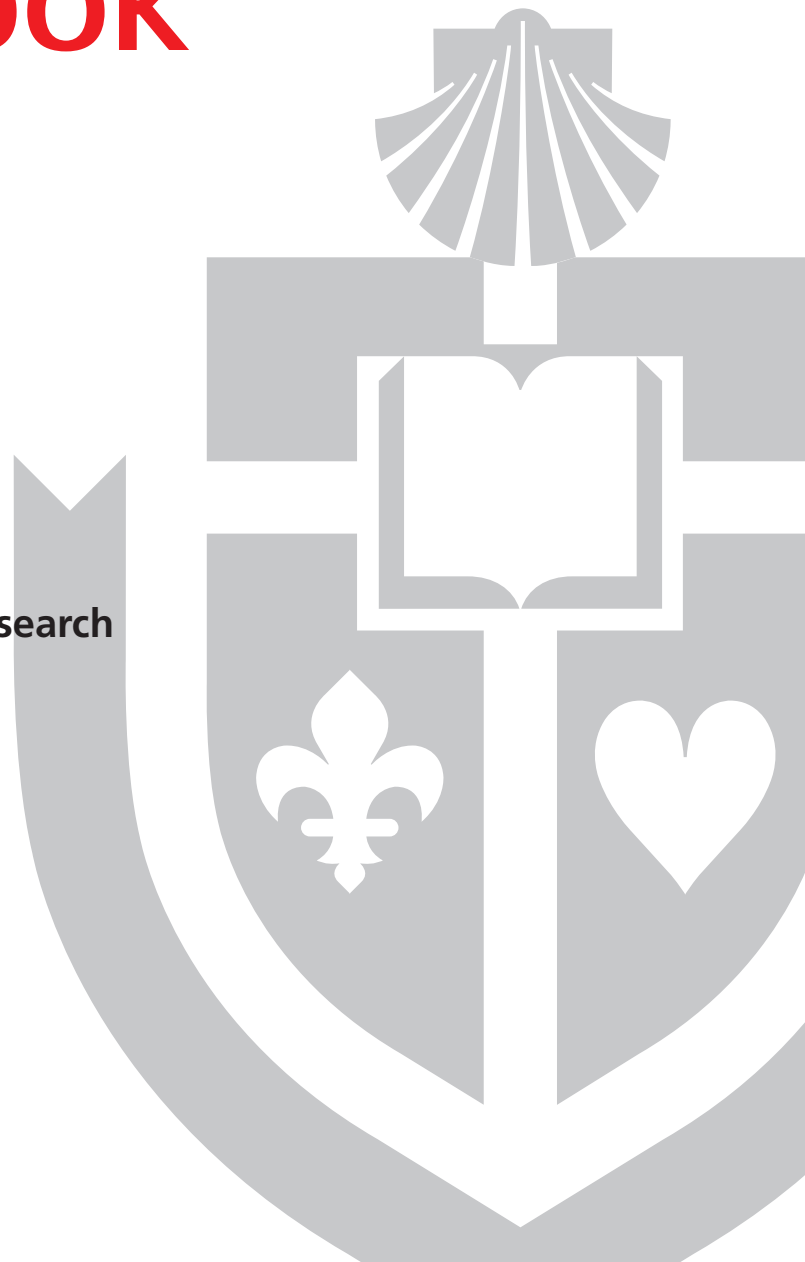
Office of Institutional Research

T (718) 990-1924

F (718) 990-2314

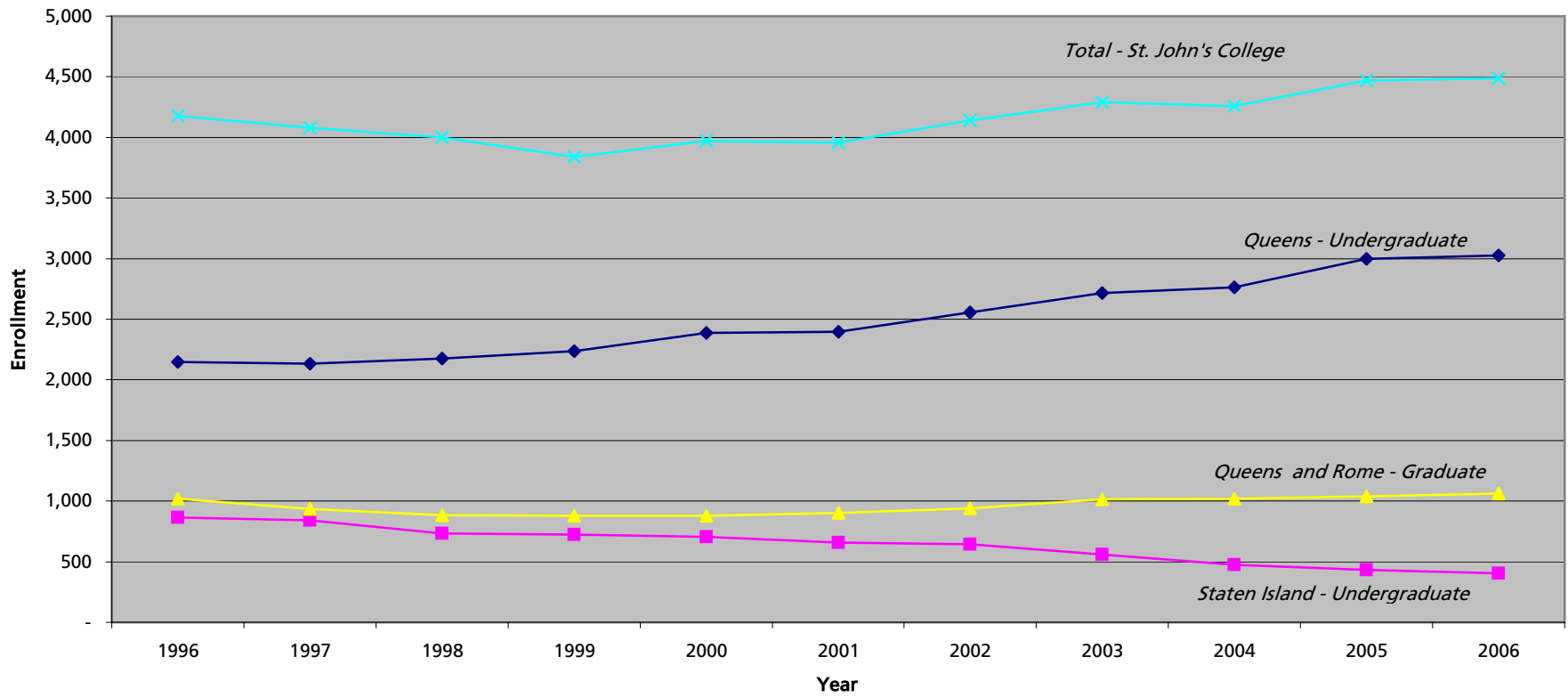
ir@stjohns.edu

www.stjohns.edu/about/ir





St. John's College of Liberal Arts and Sciences Student Enrollment Fall 1996 - Fall 2006



Prepared by: Office of Institutional Research (da)

Based on data as of 10/16/2006



St. John's College of Liberal Arts and Sciences (01)
Student Enrollment - Undergraduate Division
Queens Campus
Fall 1996 - Fall 2006

PROGRAM	1996	1997	1998	1999	2000	2001	2002	2003	2004	2005	2006
BIOLOGY COMBINED	346	334	373	414	440	410	464	519	514	544	573
BIO Biology	334	325	358	377	390	359	432	485	497	526	569
BIO1 Biology 7-12 ²	11	6	6	7	7	3	1	2	0	2	-
BIO2 Biology/Dentistry	1	3	7	6	4	2	0	1	2	4	3
BIO3 Biology/Optomety	0	0	2	3	2	0	0	0	0	0	0
BIO5 Biology - Self Pace ³	0	0	0	21	37	46	31	31	15	12	1
CHEMISTRY COMBINED	29	34	37	36	43	38	59	57	69	80	85
CHE Chemistry	27	31	37	36	41	34	56	56	69	79	85
CHE1 Chemistry 7-12 ²	2	3	0	0	0	1	0	0	0	1	-
CHES Chemistry - Self Pace ³	0	0	0	0	2	3	3	1	0	0	0
ECONOMICS COMBINED	25	15	18	16	24	22	23	38	42	37	52
ECO Economics	25	14	17	15	23	22	23	38	42	37	52
ECO1 Economics Social Studies 7-12 ²	0	1	1	1	1	-	-	-	-	-	-
ENGLISH COMBINED	130	132	125	148	141	144	145	149	162	179	192
ENG English	86	88	89	102	104	117	133	148	160	177	192
ENG1 English 7-12 ²	43	44	36	46	37	27	12	1	2	2	-
ENG3 English ²	1	0	0	0	-	-	-	-	-	-	-
ENVIRONMENTAL STUDIES COMBINED	76	61	50	48	40	29	31	24	20	24	18
ESP Environmental Studies (Ecology)	39	34	37	37	24	15	18	12	14	14	9
ESP1 Environmental Std Social Studies 7-12 ²	1	2	2	1	-	-	-	-	-	-	-
ESP2 Environmental Studies (Bio 7-12) ²	4	3	1	0	3	4	1	-	-	-	-
ESP4 Environmental Studies ²	2	1	-	-	-	-	-	-	-	-	-
ESP5 Environmental Std (Social Sciences)	30	21	10	10	13	8	12	12	6	10	9
ESPS Environmental Studies - Self Pace ³	0	0	0	0	0	2	0	0	0	0	0
FINE ARTS COMBINED	82	94	110	115	128	125	124	112	90	87	88
FNA Art-Paint, Print, Sculpture	16	18	19	16	17	19	21	19	19	13	22
FNA1 Graphic Design	57	62	68	75	91	82	80	68	45	44	38
FNA2 Creative Photography	9	12	14	11	10	12	11	14	17	18	14
FNA4 Illustration	0	2	9	13	10	12	12	11	9	12	14
FRENCH COMBINED	8	7	12	8	9	8	6	10	13	17	10
FRE French	7	6	8	5	8	6	6	10	13	17	10
FRE1 French 7-12 ²	1	1	4	3	1	2	-	-	-	-	-
GOVERNMENT COMBINED	187	189	181	184	225	239	246	250	244	250	235
GOV Government & Politics	162	167	166	173	211	231	242	245	242	246	229
GOV1 Government & Politics Social Studies 7-12 ²	15	13	9	9	6	4	1	1	-	-	-
GOV2 Public Admin & Public Service	10	8	6	2	7	3	3	4	2	4	6
GOV3 Government & Politics/Library Science	0	1	0	0	0	0	0	0	0	0	0
GOV4 Government & Politics/Law	0	0	0	0	1	1	0	0	0	0	0
HISTORY COMBINED	89	94	86	90	103	99	107	107	118	104	102
HIS History	61	63	46	47	58	67	90	100	113	102	102
HIS1 History Social Studies 7-12 ²	28	31	40	43	45	32	17	7	5	2	-

² No longer offered

³ Not a program



St. John's College of Liberal Arts and Sciences (01)
Student Enrollment - Undergraduate Division
Queens Campus
Fall 1996 - Fall 2006

PROGRAM	1996	1997	1998	1999	2000	2001	2002	2003	2004	2005	2006
ITALIAN COMBINED	9	9	12	12	7	9	11	8	10	22	24
ITA Italian	6	4	9	9	3	7	10	8	8	17	24
ITA1 Italian 7-12 ²	3	5	3	3	4	2	1	0	2	5	-
MATHEMATICS COMBINED	65	51	49	59	59	55	43	38	38	39	44
MTH Mathematics	49	30	25	33	31	38	33	36	38	37	44
MTH1 Mathematics 7-12 ²	16	21	24	26	28	17	10	2	0	2	-
PHILOSOPHY COMBINED	36	44	46	60	50	58	53	50	58	74	69
PHI Philosophy	34	42	40	55	44	54	38	36	58	64	61
PHI1 Philosophy - Theology	0	0	2	0	0	1	0	0	0	0	1
PHI2 Philosophical - Theological Studies	2	2	4	5	6	3	15	14	0	10	7
PHYSICAL SCIENCE COMBINED	19	23	15	11	16	16	20	15	14	15	22
PHY1 Physical Science	19	23	15	10	13	12	20	15	14	15	21
PHY3 Physical Science	-	-	-	-	-	-	-	-	-	-	1
PHYX Physical Science - Self Pace ³	0	0	0	1	3	4	0	0	0	0	0
PHYSICS COMBINED	6	4	6	6	6	12	14	15	22	22	29
PHY Physics	3	2	5	3	4	11	11	13	18	17	24
PHY2 Physics 7-12 ²	0	0	1	2	1	0	0	0	1	1	-
PHYS Physics - Self Pace ³	0	0	0	0	0	1	1	1	0	0	0
MTH3 Mathematical Physics	3	2	0	1	1	0	2	1	3	4	5
SOCIOLOGY COMBINED	40	53	47	44	53	65	51	58	66	57	62
SOC Sociology	39	50	45	42	48	63	51	58	66	57	62
SOC1 Sociology Social Studies 7-12 ²	1	3	2	2	5	2	-	-	-	-	-
SPANISH COMBINED	15	10	9	14	21	16	10	20	18	17	24
SPA Spanish	9	4	6	10	12	11	9	18	18	17	24
SPA1 Spanish 7-12 ²	6	6	3	4	9	5	1	2	-	-	-
SPEECH COMBINED	102	104	112	101	92	92	107	107	126	142	153
SPE Speech Pathology & Audiology	97	95	107	95	87	87	101	103	122	137	147
SPE1 Speech (Public Address)	5	9	5	6	5	5	5	4	4	5	6
SPE2 Speech	0	0	0	0	0	0	1	0	0	0	0
ANT Anthropology	8	7	8	7	6	5	7	9	5	6	16
ASC Asian Studies	8	3	3	3	4	2	7	10	13	14	17
ASP American Studies ²	4	1	0	2	-	-	-	-	-	-	-
PSY Psychology	483	431	392	371	421	468	483	503	500	503	541
THE Theology	9	12	11	16	18	19	22	19	21	22	23
0000 Undeclared	312	423	449	417	425	429	483	553	560	674	602
NM Non-Matriculated	61	0	25	53	56	37	39	45	38	70	43
TOTAL:	2,149	2,135	2,176	2,235	2,387	2,397	2,555	2,716	2,761	2,999	3,024
PERCENT CHANGE:		-0.7%	1.9%	2.7%	6.8%	0.4%	6.6%	6.3%	1.7%	8.6%	0.8%

² No longer offered

³ Not a program



Notre Dame College (59) Fall 1996 - Fall 1998
 St. John's College of Liberal Arts and Sciences (51)
 The School of Education (62)
 Staten Island Campus
 Fall 1996 - Fall 2006

PROGRAM	Notre Dame College*			St. John's College of Arts and Sciences							
	1996	1997	1998	1999	2000	2001	2002	2003	2004	2005	2006
COMPUTER SCIENCE COMBINED	55	74	89	117	112	104	78	52	25	14	22
CUS Computer Science	55	74	89	116	110	104	78	52	25	14	22
CUS2 Computer Science Business Option	0	0	0	1	2	0	0	0	0	0	0
ENGLISH COMBINED	46	47	51	54	46	45	42	52	50	43	49
ENG English	36	34	41	37	34	39	40	52	49	43	49
ENG1 English 7-12 ²	10	13	10	14	12	6	2	0	1	-	-
ENG3 English (BA/MA)	0	0	0	3	0	0	0	0	0	0	0
MATHEMATICS COMBINED	26	27	25	23	21	14	11	4	7	6	4
MTH Mathematics	16	15	12	9	11	5	7	4	6	6	4
MTH1 Mathematics 7-12 ²	10	12	13	14	10	9	4	0	1	-	-
PHILOSOPHY COMBINED	4	5	5	0	3	2	4	1	1	2	2
PHI Philosophy	2	2	1	0	2	1	4	1	1	2	2
PHI1 Philosophy - Theology	2	3	4	0	1	1	0	0	0	0	0
SOCIOLOGY/SOCIAL STUDIES COMBINED	31	38	32	24	14	12	10	4	17	19	22
SOC Sociology	17	25	17	9	7	8	7	1	10	9	10
SST Social Studies	2	0	0	0	0	1	2	3	6	9	12
SST1 Social Studies 7-12 ²	12	13	15	15	7	3	1	0	1	1	-
SPEECH COMBINED	36	54	59	55	53	42	39	36	30	30	44
SPE Speech Pathology & Audiology	12	23	18	48	48	40	38	36	30	30	44
SPE2 Speech	24	31	41	7	5	2	1	0	0	0	0
TRANSPORTATION COMBINED⁸	10	10	0	0	0	0	0	0	0	0	0
TRA Transportation ⁸	0	3	0	0	0	0	0	0	0	0	0
TRA1 Transportation & Logistics ⁸	10	7	0	0	0	0	0	0	0	0	0
ASP American Studies ²	4	2	-	-	-	-	-	-	-	-	-
ECO Economics	1	1	3	0	0	0	0	1	0	0	0
EDU2 Elem ED Pre K-6 & Sp ED K-6 ²	14	14	-	-	-	-	-	-	-	-	-
GOV Government and Politics	0	0	0	6	18	23	27	23	20	25	25
HIS History	9	11	5	8	9	10	12	11	12	14	19
LAS Liberal Arts	334	231	145	157	153	162	153	144	130	97	44
NUR Nursing ^{2,9}	0	31	42	31	39	24	41	8	-	-	-
PSC Political Science ²	44	39	36	27	9	6	-	-	-	-	-
PSY Psychology	90	92	91	77	83	73	73	85	75	85	75



Notre Dame College (59) Fall 1996 - Fall 1998
 St. John's College of Liberal Arts and Sciences (51)
 The School of Education (62)
 Staten Island Campus
 Fall 1996 - Fall 2006

				St. John's College of Arts and Sciences								
PROGRAM		1996	1997	1998	1999	2000	2001	2002	2003	2004	2005	2006
THE	Theology	0	0	1	2	0	1	1	2	4	3	3
0000	Undeclared	128	167	149	145	145	140	154	135	105	91	78
NM	Non-Matriculated	34	0	0	0	0	0	1	1	0	1	15
SUBTOTAL		866	843	733	726	705	658	646	559	476	430	402
				The School of Education								
PROGRAM		1996	1997	1998	1999	2000	2001	2002	2003	2004	2005	2006
ADOLESCENCE COMBINED							9	24	33	30	31	34
AEE	Adolescence Ed /English	-	-	-	-	-	3	9	16	9	6	10
AEM	Adolescence Ed /Math	-	-	-	-	-	3	5	8	10	9	11
AESS	Adolescence Ed /Social Studies	-	-	-	-	-	3	10	9	11	16	12
ADE	Adolescence Ed - Non Cert.	-	-	-	-	-	-	-	-	-	-	1
EDUCATION PRE K-6/CHILDHOOD COMBINED		144	168	209	212	198	182	164	124	115	118	111
EDU	Elem Ed Grades Pre K-6 ^{2,10}	144	167	175	170	164	89	54	5	-	-	-
EDUD	Elem Ed & Special Ed K-6 ^{2,10}	0	1	34	42	34	28	15	-	-	-	-
CED	Childhood Education 1-6	-	-	-	-	-	61	89	107	101	96	95
CEDS	Childhood Ed and Special Ed 1-6	-	-	-	-	-	4	6	12	13	20	16
CHD	Childhood Edu & Non Certification	-	-	-	-	-	-	-	-	1	2	0
SUBTOTAL		144	168	209	212	198	191	188	157	145	149	145
PERCENTAGE CHANGE			16.7%	24.4%	1.4%	-6.6%	-3.5%	-1.6%	-16.5%	-7.6%	2.8%	-2.7%
TOTAL NOTRE DAME COLLEGE:				1,010	1,011	942	-	-	-	-	-	-
PERCENT CHANGE:				0.1%	-6.8%		-	-	-	-	-	-
TOTAL ST. JOHN'S COLLEGE:							726	705	658	646	559	476
PERCENT CHANGE:							-2.9%	-6.7%	-1.8%	-13.5%	-14.8%	-9.7%
TOTAL THE SCHOOL OF EDUCATION:				-	-	-	212	198	191	188	157	145
PERCENT CHANGE:							-6.6%	-3.5%	-1.6%	-16.5%	-7.6%	2.8%

*Notre Dame College merged with St. John's College of Liberal Arts and Sciences in Spring 1999.

Elementary Education majors (EDU & EDUD) are now in the School of Education.

² No longer offered

⁸ Now in the College of Professional Studies

⁹ In affiliation with St. Vincents Catholic Medical Centers of New York.

¹⁰ Beginning in Fall 2001, entering students majoring in Elementary Education Pre K-6 are coded as Childhood Education majors.



St. John's College of Liberal Arts and Sciences (21)
Student Enrollment - Graduate Division
Queens Campus
Fall 1996 - Fall 2006

PROGRAM	1996	1997	1998	1999	2000	2001	2002	2003	2004	2005	2006
ASIAN STUDIES COMBINED	22	19	13	19	19	13	15	14	10	13	13
ASC Asian Studies	-	-	-	-	-	-	-	-	1	0	0
CHS Chinese Studies	2	2	3	7	10	6	5	2	1	4	2
EAC East Asian Cultural Studies	0	1	0	0	0	0	0	0	0	0	0
EAS East Asian Studies	20	16	10	12	9	7	10	12	8	9	11
AUDIOLOGY & SPEECH COMBINED	135	112	118	118	125	127	127	139	164	153	136
AUD Audiology (AuD)	-	-	-	-	-	-	-	-	-	4	7
SPE Speech Path & Aud	135	112	118	118	125	127	127	139	164	149	129
BIOLOGY COMBINED	56	54	53	52	51	50	48	50	52	46	46
BIO Biology MS	23	21	25	30	24	21	16	14	16	10	16
NM	4	9	4	4	2	2	2	1	3	5	1
Ph.D.	29	24	24	18	25	27	30	35	33	31	29
ENGLISH COMBINED	63	64	54	48	43	46	43	42	54	51	60
ENG English MA & NM	27	27	23	18	19	23	25	20	27	24	26
DA	36	37	31	30	24	23	18	22	27	27	34
GOVERNMENT COMBINED	98	103	81	76	76	74	62	59	60	69	66
GOV Government & Politics	97	102	80	73	75	73	61	58	59	69	65
GOV3 Gov & Pol/Library Science	1	1	1	3	1	1	1	1	1	0	1
HISTORY COMBINED	71	65	60	53	56	45	51	51	50	49	52
HIS History	35	29	26	22	27	18	19	19	22	18	25
HIS2 Modern World History (DA)	36	36	34	31	29	27	32	32	28	31	27
LIBRARY SCIENCE COMBINED	113	100	84	86	86	74	106	116	94	90	92
LIS Library Science	110	95	79	84	83	73	105	116	93	90	90
LIS1 Library & Info Studies	3	5	5	2	3	1	1	0	1	0	2
PSYCHOLOGY COMBINED	274	244	222	238	227	255	255	261	274	291	263
PSY1 Gen Exp Psychology	32	20	22	14	14	12	19	21	26	26	21
PSY2 Clinical Psychology	63	61	56	58	46	51	47	45	40	37	34
PSY3 Clinical Psy (Child)	59	62	58	61	51	50	47	46	39	39	35
PSY5 School Psychologist	92	78	63	59	47	40	26	29	45	54	44
PSY5 School Psychologist (Psy.D)	-	-	-	28	54	82	90	90	94	101	99
PSY6 Sch Psy/Bilingual Ext	28	23	23	15	8	9	7	5	7	9	8
PSY6 Sch Psy/Bilingual Ext (Psy.D)	-	-	-	3	7	11	19	25	23	25	22
THEOLOGY COMBINED	50	50	50	43	45	55	56	59	68	64	55
THE Theology	46	45	44	39	42	50	52	55	66	62	50
THE2 Theo Catechetical Ministry	4	5	6	4	3	5	4	4	2	2	5



St. John's College of Liberal Arts and Sciences (21)
Student Enrollment - Graduate Division
Queens Campus
Fall 1996 - Fall 2006

PROGRAM		1996	1997	1998	1999	2000	2001	2002	2003	2004	2005	2006
CHE	Chemistry	15	13	22	13	17	15	19	17	23	33	35
LAC	Latin American and Caribbean Studies	0	0	0	0	0	0	1	1	2	3	2
MTH	Mathematics	10	11	14	14	4	7	6	8	7	10	15
CRJJ	Criminology and Justice	-	-	-	-	-	-	13	29	33	37	38
MIN	Ministerial Studies	2	3	4	5	6	8	7	7	4	4	5
PAS	Pastoral Ministry	0	0	1	1	1	1	0	0	0	0	0
SOC	Sociology	41	34	34	27	29	23	25	17	22	21	33
SPA	Spanish	11	11	13	19	15	14	15	14	22	21	19
9999	Grad/Undergrad Tuition	-	10	18	-	-	-	-	-	-	-	-
0000	Undeclared	0	27	8	8	0	0	0	0	1	0	0
NM	Non-Matriculated	59	0	6	26	29	37	30	60	9	6	34
TOTAL QUEENS:		1,020	920	855	846	829	844	879	944	949	961	964
PERCENT CHANGE:			-9.8%	-7.1%	-1.1%	-2.0%	1.8%	4.1%	7.4%	0.5%	1.3%	0.3%

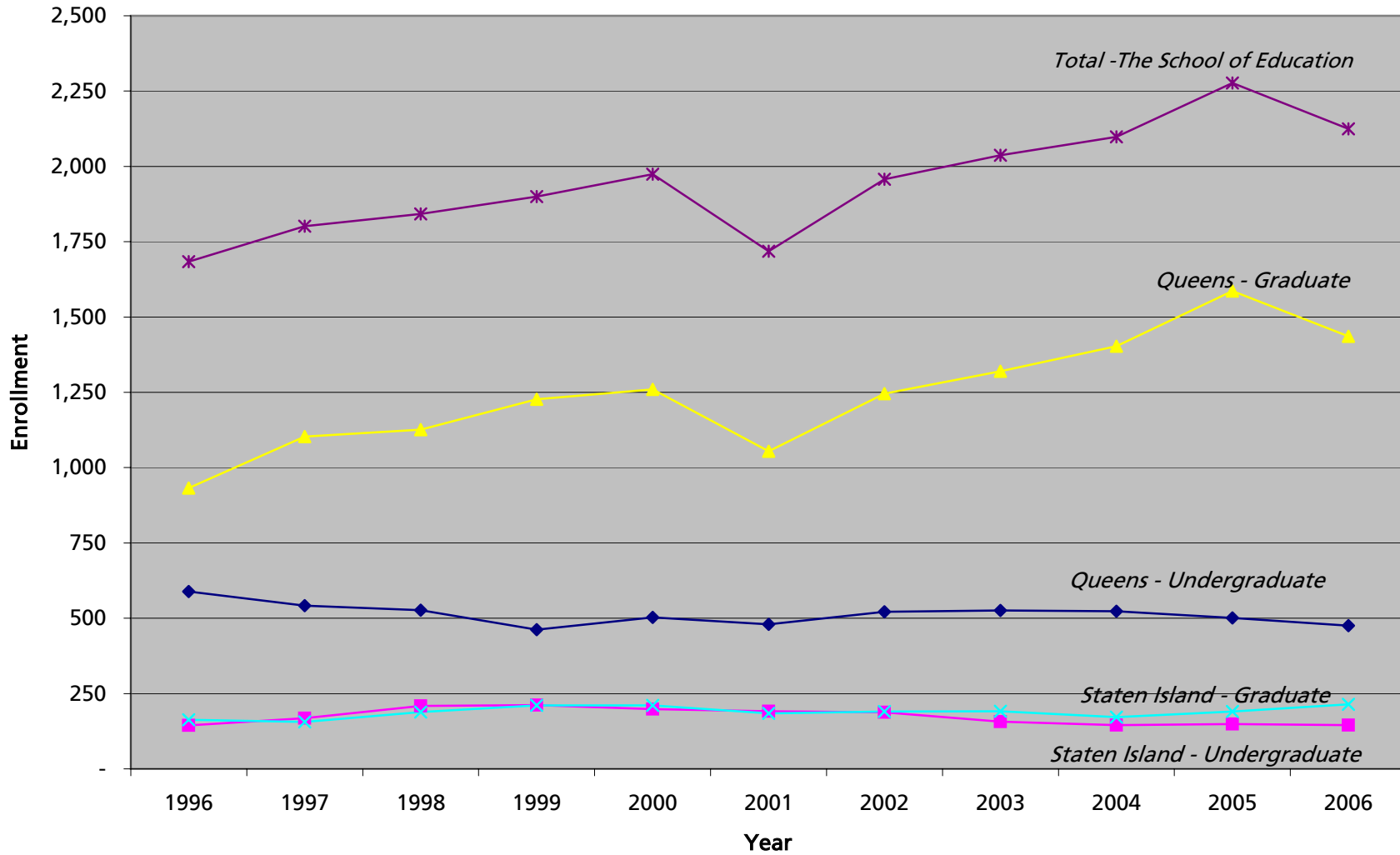
<i>FORMERLY METROPOLITAN COLLEGE*</i>		<i>St. John's College</i>										
LST	Liberal Studies*	14	29	24	17	16	20	13	15	15	12	31
NM	Non-Matric	-	-	-	2	-	-	-	-	-	-	-
TOTAL:						845	864	892	959	964	973	995
PERCENT CHANGE:						2.2%	3.2%	7.5%	0.5%	0.9%	2.3%	

Rome Campus

PROGRAM		1996	1997	1998	1999	2000	2001	2002	2003	2004	2005	2006
GOV	Government & Politics	-	15	28	32	32	37	46	56	55	66	64
NM	Non-Matric	-	-	-	-	-	1	-	2	1	1	1
TOTAL ROME:			15	28	32	32	38	46	58	56	67	65
PERCENT CHANGE:			86.7%	14.3%	0.0%	18.8%	21.1%	26.1%	-3.4%	19.6%	-3.0%	
QUEENS & ROME TOTAL:		1,020	935	883	878	877	902	938	1,017	1,020	1,040	1,060
PERCENT CHANGE:			-8.3%	-5.6%	-0.6%	-0.1%	2.9%	4.0%	8.4%	0.3%	2.0%	1.9%



The School of Education Student Enrollment Fall 1996 - Fall 2006





The School of Education - (12)
 Student Enrollment - Undergraduate Division
 Queens Campus
 Fall 1996 - Fall 2006

PROGRAM	1996	1997	1998	1999	2000	2001	2002	2003	2004	2005	2006
EDUCATION PRE K-6/CHILDHOOD COMBINED	483	429	432	376	421	414	414	384	363	346	318
EDU Elem Ed Pre K-6 ²	347	325	344	318	376	296	196	72	-	-	-
EDU1 Elem Ed Pre K-6 & Bil Ed K-6 ²	30	25	21	6	2	-	-	-	-	-	-
EDU2 Elem Ed Pre K-6 & Sp Ed K-6 ²	106	79	67	52	43	25	17	5	-	-	-
EDUD Elem Ed/Spec Ed (PreK-6): Dual Cert. ²	0	0	0	0	0	1	1	1	-	-	-
CED Childhood Education 1-6	-	-	-	-	-	82	182	275	321	309	283
CEDS Childhood Ed and Special Ed 1-6	-	-	-	-	-	10	18	31	41	35	35
CHD Childhood Ed - Non Certification	-	-	-	-	-	-	-	-	1	2	0
EDUCATION PRE K-6 & 7-9/ ADOLESCENCE COMBINED	39	50	42	36	31	57	106	139	159	155	157
EDUE Elem Ed Pre K-6 & 7-9 English ²	11	19	13	10	7	7	4	1	-	-	-
EDUG Elem Ed Pre K-6 & 7-9 Gen Sci ²	4	8	4	3	3	2	1	1	-	-	-
EDUH Elem Ed Pre K-6 & 7-9 S.S. ²	5	4	8	11	8	6	2	1	-	-	-
EDUI Elem Ed Pre K-6 & 7-9 Italian ²	0	1	0	0	1	1	0	0	-	-	-
EDUM Elem Ed Pre K-6 & 7-9 Math ²	9	10	11	6	9	5	3	1	-	-	-
EDUS Elem Ed Pre K-6 & 7-9 Span ²	3	3	5	6	3	3	1	1	-	-	-
ELE1 Elem N-6 & Special Ed ²	3	3	-	-	-	-	-	-	-	-	-
ELE2 Elementary N-6 ²	3	2	1	-	-	-	-	-	-	-	-
ELE3 Elem N-6 & (Bil) ²	1	0	-	-	-	-	-	-	-	-	-
AEB Adolescence Ed /Biology	-	-	-	-	-	-	-	-	-	-	4
AEE Adolescence Ed /English	-	-	-	-	-	4	22	42	45	46	45
AEM Adolescence Ed /Math	-	-	-	-	-	13	24	31	47	48	44
AEP Adolescence Edu/Physics	-	-	-	-	-	0	5	8	9	7	8
AESP Adolescence Ed /Spanish	-	-	-	-	-	2	8	7	8	9	8
AESS Adolescence Ed /Social Studies	-	-	-	-	-	14	36	46	50	45	48
HEARING HANDICAP COMBINED	14	13	11	6	7	3					
EDU5 Teach Of Spec & Hear Hand ²	0	5	11	6	7	3	-	-	-	-	-
TSH Speech & Hearing Hand ²	14	8	-	-	-	-	-	-	-	-	-
EDU3 Art Education K-12 ²	3	10	9	10	9	6	1	2	-	-	-
HSC Human Services ⁸	45	39	33	34	35	-	-	-	-	-	-
0000 Undeclared	0	1	0	0	0	0	0	0	1	0	0
NM Non-Matriculated	5	0	0	0	0	0	0	1	0	0	0
TOTAL:	589	542	527	462	503	480	521	526	523	501	475
PERCENT CHANGE:		-8.0%	-2.8%	-12.3%	8.9%	-4.6%	8.5%	1.0%	-0.6%	-4.2%	-5.2%

Note: Beginning in Fall 2001, students majoring in Elementary Education Pre K-6 are coded as Childhood Education majors.
 Students majoring in Elementary Education Pre K-6 and 7-9 are coded as Adolescence Education majors.

² No longer offered

⁸ Now in the College of Professional Studies



Notre Dame College (59) Fall 1995 - Fall 1998
 The School of Education (62)
 Staten Island Campus
 Fall 1996 - Fall 2006

PROGRAM	The School of Education											
	1996	1997	1998	1999	2000	2001	2002	2003	2004	2005	2006	
ADOLESCENCE COMBINED						9	24	33	30	31	34	
AEE Adolescence Ed /English	-	-	-	-	-	3	9	16	9	6	11	
AEM Adolescence Ed /Math	-	-	-	-	-	3	5	8	10	9	11	
AESS Adolescence Ed /Social Studies	-	-	-	-	-	3	10	9	11	16	11	
ADE Adolescence Ed - Non Cert.	-	-	-	-	-	-	-	-	-	-	1	
EDUCATION PRE K-6/CHILDHOOD COMBINED	144	168	209	212	198	182	164	124	115	118	111	
EDU Elem Ed Grades Pre K-6 ^{2,10}	144	167	175	170	164	89	54	5	-	-	-	
EDUD Elem Ed & Special Ed K-6 ^{2,10}	0	1	34	42	34	28	15	-	-	-	-	
CED Childhood Education 1-6	-	-	-	-	-	61	89	107	101	96	95	
CEDS Childhood Ed and Special Ed 1-6	-	-	-	-	-	4	6	12	13	20	16	
CHD Childhood Edu & Non Certification	-	-	-	-	-	-	-	-	1	2	0	
SUBTOTAL	144	168	209	212	198	191	188	157	145	149	145	
PERCENTAGE CHANGE		16.7%	24.4%	1.4%	-6.6%	-3.5%	-1.6%	-16.5%	-7.6%	2.8%	-2.7%	

*Notre Dame College merged with St. John's College of Liberal Arts and Sciences in Spring 1999.

Elementary Education majors (EDU & EDUD) are now in the School of Education.

² No longer offered

¹⁰ Beginning in Fall 2001, entering students majoring in Elementary Education Pre K-6 are coded as Childhood Education majors.



The School of Education (32)
Student Enrollment - Graduate Division
Queens Campus
Fall 1996 - Fall 2006

PROGRAM	1996	1997	1998	1999	2000	2001	2002	2003	2004	2005	2006
CHILDHOOD/ELEM. EDUCATION COMBINED	155	152	189	227	261	273	319	349	277	242	227
EDU Elementary Education Pre K-6	155	152	188	227	261	273	237	148	98	94	65
EDU1 Elem Ed Pre K-6 & Bil Ed K-6	0	0	1	-	-	-	-	-	-	-	-
CEC Childhood Education: Career	-	-	-	-	-	-	26	84	118	115	112
CEF Childhood Education: Field	-	-	-	-	-	-	6	13	9	10	7
CHL Childhood Education Teaching Fellow	-	-	-	-	-	-	50	104	45	0	0
CSPE Childhood & Childhood Special	-	-	-	-	-	-	-	-	3	14	28
CTES Childhood Education & TESOL	-	-	-	-	-	-	-	-	4	9	15
EARLY CHILDHOOD ED. COMBINED	-	-	-	-	-	-	15	46	67	68	62
ECC Early Childhood Education: Career	-	-	-	-	-	-	8	28	48	55	48
ECF Early Childhood Education: Field	-	-	-	-	-	-	7	18	19	13	14
ED ADMIN & SUPERVISION / SBL COMBINED	98	103	120	137	143	155	156	191	259	435	414
EDAS Ed Admin & Supervision (EDD,PD)	94	99	102	102	98	91	127	163	209	181	152
EDAS Ed Admin & Supervision (MSED, NM)	4	4	18	35	45	64	29	28	50	47	2
SBL School Building Leadership	-	-	-	-	-	-	-	-	-	206	258
SDL School District Leadership	-	-	-	-	-	-	-	-	-	1	2
READING/LITERACY COMBINED	138	146	198	218	224	197	173	143	108	88	74
EDU4 Reading/Special Education	14	14	23	51	37	18	10	1	0	0	0
RDS Reading Specialist	124	132	175	167	187	179	133	64	0	2	0
LTCB Literacy, Birth-6	-	-	-	-	-	-	25	74	101	75	63
LTCB5 Literacy, 5-12	-	-	-	-	-	-	5	0	0	0	0
LTC5 Literacy 5-12	-	-	-	-	-	-	0	4	7	11	11
SCHOOL COUNSELOR COMBINED	87	91	123	135	126	101	124	116	94	90	75
EDU8 School Counselor/Bil Ext	19	25	28	35	36	29	27	22	17	22	15
SHC School Counselor	68	66	95	100	90	72	97	94	77	68	60
SECONDARY/ADOLESCENCE EDUCATION COMB.	100	101	163	181	225	103	162	238	311	309	309
BIO1 Biology 7-12 ²	9	16	24	32	34	10	30	5	5	-	-
AEB Adolescence Education: Biology	-	-	-	-	-	-	-	-	-	1	1
ENG1 English 7-12 ²	25	28	74	56	58	21	29	8	1	-	-
AEE Adolescence Education: English	-	-	-	-	-	-	-	-	1	7	6
MTH1 Mathematics 7-12	24	20	30	50	90	23	20	10	3	1	-
AEM Adolescence Education: Mathematics	-	-	-	-	-	-	-	-	-	6	3
SPA1 Spanish 7-12 ²	4	2	2	3	5	9	4	4	1	-	-
AESP Adolescence Education: Spanish	-	-	-	-	-	-	-	-	-	2	1
SST1 Social Studies 7-12 ²	33	31	31	37	33	34	30	10	7	1	-
AESS Adolescence Education: Social Studies	-	-	-	-	-	-	-	-	6	7	5
CHE1 Chemistry 7-12 ²	2	2	2	3	4	4	3	1	-	-	-
FRE1 French 7-12 ²	3	1	0	0	1	1	-	-	-	-	-
PHY1 Physics 7-12 ²	0	1	-	-	-	-	-	-	-	-	-
PHY2 Physics Education 7-12 ²	0	0	0	0	0	1	1	-	-	-	-
AEC Adolescence Education: Career	-	-	-	-	-	-	19	93	155	146	135
AEET Adolescence Education: Eng 7-12 (TF)	-	-	-	-	-	-	-	-	-	-	20
AEF Adolescence Education: Field	-	-	-	-	-	-	5	27	23	17	10
MDM Math 5-9 Teaching Fellow	-	-	-	-	-	-	21	80	3	77	0
AMC Alt. Certificate: Adolescence Math 7-12	-	-	-	-	-	-	-	-	106	44	128

² No longer offered



**The School of Education (32)
Student Enrollment - Graduate Division
Queens Campus
Fall 1996 - Fall 2006**

PROGRAM	1996	1997	1998	1999	2000	2001	2002	2003	2004	2005	2006
SPECIAL EDUCATION COMBINED	99	82	78	90	85	60	63	57	79	73	42
EDSP Special Education	89	72	48	60	56	41	33	17	1	0	0
EDU7 Special Ed With Bilingual Ext	10	10	30	30	29	19	14	3	0	0	0
TCD Teach Child with DIS Childhood	-	-	-	-	-	-	16	18	33	45	41
TFD Teach Fellow:Child Disability	-	-	-	-	-	-	0	19	45	28	1
BBE Bilingual/Bicultural ED ²	1	-	-	-	-	-	-	-	-	-	-
EDU6 Student Dev Prac Higher ED	25	20	16	20	38	39	40	42	25	18	6
EDU9 Bilingual/Multicultural ED	13	8	32	39	30	14	21	4	12	13	19
ELE2 Elementary Education N-6 ²	4	1	-	-	-	-	-	-	-	-	-
INL Instructional Leadership	73	80	103	77	73	67	74	79	87	94	95
REH Rehabilitation Counseling	29	23	24	18	17	9	16	15	22	19	10
TES Tesol	19	38	46	39	32	33	81	36	62	133	93
0000 Undeclared	0	258	27	5	0	0	0	0	0	0	0
NM Non-Matriculated	91	0	7	41	6	3	2	4	0	4	10
TOTAL:	932	1,103	1,126	1,227	1,260	1,054	1,246	1,320	1,403	1,586	1,436
PERCENT CHANGE:		18.3%	2.1%	9.0%	2.7%	-16.3%	18.2%	5.9%	6.3%	13.0%	-9.5%

² No longer offered



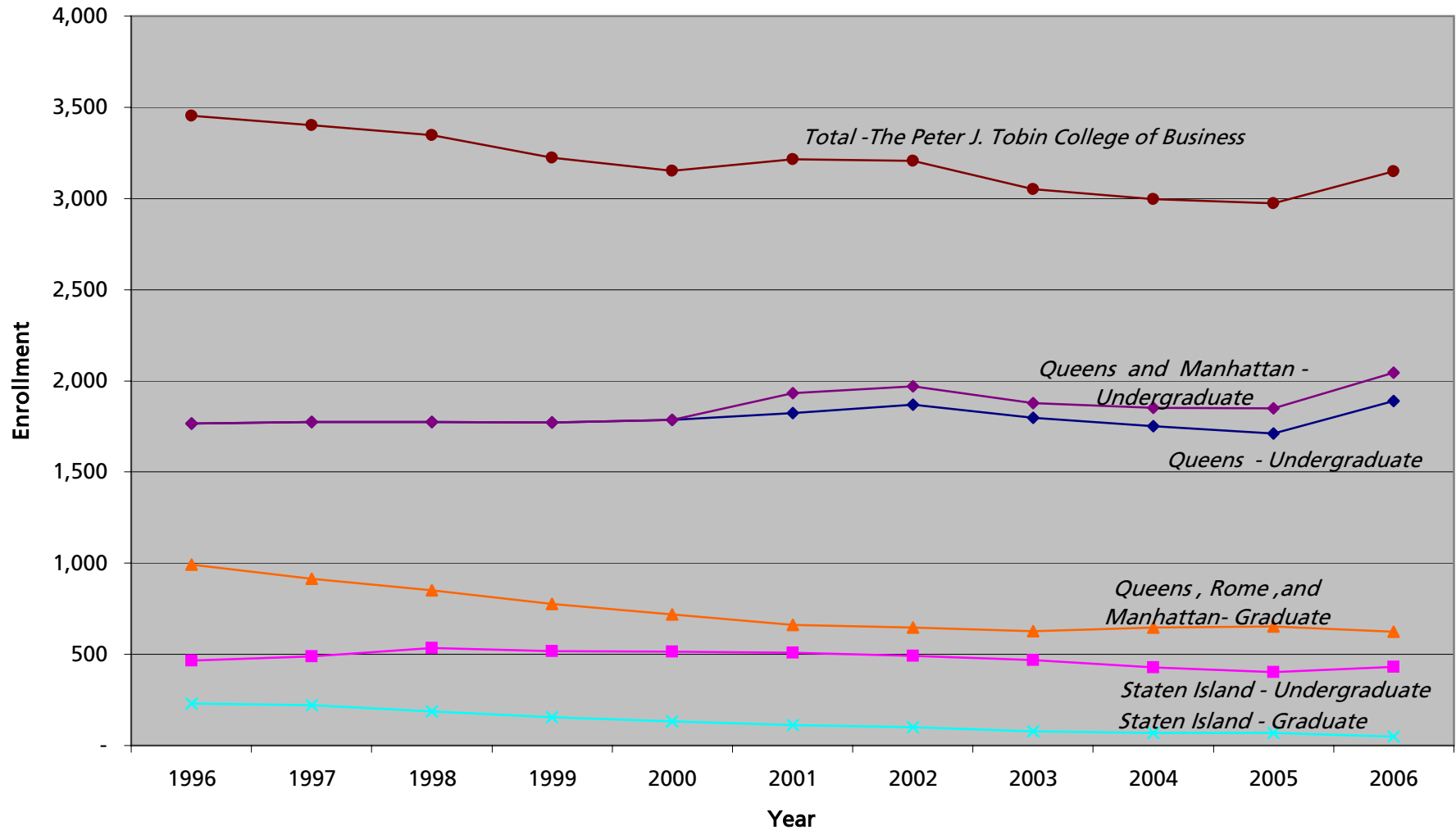
The School of Education (82)
 Student Enrollment - Graduate Division
 Staten Island Campus
 Fall 1996 - Fall 2006

PROGRAM	1996	1997	1998	1999	2000	2001	2002	2003	2004	2005	2006
CHILDHOOD/ELEMENTARY EDUCATION COMBINED	25	27	39	39	39	26	42	65	60	63	53
EDU Elementary Education Pre K-6	25	27	39	39	39	26	11	10	5	6	5
CEC Childhood Education: Career	-	-	-	-	-	-	13	54	50	51	44
CED Childhood Education N-6	-	-	-	-	-	-	18	0	0	2	0
CEF Childhood Education Field Work	-	-	-	-	-	-	-	1	3	0	0
CSPE Childhood & Childhood Special	-	-	-	-	-	-	-	-	2	4	4
ED ADMIN & SUPERVISION COMBINED	11	9	23	39	38	33	31	29	33	57	93
EDAS Ed Admin & Supervision (PD)	9	8	17	23	24	24	19	24	20	10	5
EDAS Ed Admin & Supervision (MSED,NM)	2	1	6	16	14	9	12	5	13	13	1
SBL School Building Leadership	-	-	-	-	-	-	-	-	-	34	87
READING LITERACY COMBINED	53	50	60	61	48	50	55	57	42	33	28
RDS Reading Specialist ²	46	48	60	60	47	46	30	11	1	-	-
EDU4 Reading/Special Education ²	7	2	0	1	1	4	-	-	-	-	-
LTCB Literacy, Birth-6	-	-	-	-	-	-	23	40	37	30	27
LTC5 Literacy, 5-12	-	-	-	-	-	-	2	6	4	3	1
EDSP Special Education ²	19	16	15	15	16	11	8	-	-	-	-
ELE2 Elementary Education N-6 ²	1	-	-	-	-	-	-	-	-	-	-
INL Instructional Leadership	0	3	13	17	20	16	11	0	0	0	0
REH Rehabilitation Counseling	16	10	12	13	15	14	11	6	6	5	4
SHC School Counselor	12	9	18	22	33	31	32	33	30	30	28
0000 Undeclared	0	32	9	5	0	3	0	1	1	2	8
NM Non-Matriculated	26	0	0	0	2	0	0	0	0	0	0
TOTAL:	163	156	189	211	211	184	190	191	172	190	214
PERCENT CHANGE:		-4.3%	21.2%	11.6%	0.0%	-12.8%	3.3%	0.5%	-9.9%	10.5%	12.6%

² No longer offered



The Peter J. Tobin College of Business
 Student Enrollment
 Fall 1996 - Fall 2006



The College of Insurance merged with St. John's University as of June 1, 2001 to form the Manhattan campus.



The Peter J. Tobin College of Business (14)
 Student Enrollment - Undergraduate Division
 Fall 1996 - Fall 2006

Queens Campus

PROGRAM	1996	1997	1998	1999	2000	2001	2002	2003	2004	2005	2006
ACCOUNTING COMBINED	537	552	514	419	381	359	387	384	403	435	488
ACC Accounting (BS)	512	532	494	394	359	331	387	338	365	404	406
ACC2 Accounting (BS/MS)	25	20	20	25	22	28	0	22	11	19	39
ACC3 Accounting MS/Tax	-	-	-	-	-	-	-	24	27	12	43
CIS Computer Info Sys & Decision Sciences	1	0	0	0	0	0	0	0	0	0	0
ECO Economics	27	32	36	37	42	47	33	37	35	38	39
FIN Finance	377	359	439	471	540	535	525	445	426	400	443
MGT Management	386	394	364	360	312	317	338	352	361	383	410
MIS Management Info Systems	0	0	0	0	0	0	1	3	9	10	15
MKT Marketing	267	244	237	226	264	276	290	281	310	280	269
MSC Military Science ⁴	0	15	24	41	18	37	29	16	17	23	28
0000 Undeclared	140	179	159	216	227	247	265	276	186	141	197
NM Non-Matriculated	30	0	2	2	2	4	2	2	3	1	1
TOTAL:	1,765	1,775	1,775	1,772	1,786	1,822	1,870	1,796	1,750	1,711	1,890
PERCENT CHANGE:		0.6%	0.0%	-0.2%	0.8%	2.0%	2.6%	-4.0%	-2.6%	-2.2%	10.5%

Manhattan Campus

PROGRAM	1996	1997	1998	1999	2000	2001	2002	2003	2004	2005	2006
ACT Actuarial Science	-	-	-	-	-	28	33	42	61	79	101
RMI Risk Mgt and Insurance	-	-	-	-	-	70	65	39	41	58	55
0000 Undeclared	-	-	-	-	-	12	1	0	0	0	0
NM Non-Matriculated	-	-	-	-	-	1	0	0	0	0	0
TOTAL:						111	99	81	102	137	156
							-10.8%	-18.2%	25.9%	34.3%	13.9%
QUEENS & MANHATTAN TOTAL:	1,765	1,775	1,775	1,772	1,786	1,933	1,969	1,877	1,852	1,848	2,046
PERCENT CHANGE:		0.6%	0.0%	-0.2%	0.8%	8.2%	1.9%	-4.7%	-1.3%	-0.2%	10.7%

Note: The College of Insurance merged with St. John's University as of June 1, 2001 to form the Manhattan campus.
 For reference purposes: 246 undergraduate students in fall 2000.



The Peter J. Tobin College of Business (64)
Student Enrollment - Undergraduate Division
Staten Island Campus
Fall 1996 - Fall 2006

PROGRAM	1996	1997	1998	1999	2000	2001	2002	2003	2004	2005	2006
ACCOUNTING COMBINED	173	174	157	155	126	125	119	112	115	106	125
ACC Accounting	166	168	156	143	126	106	98	106	109	104	117
ACC2 Accounting (BS/MS)	7	6	1	12	0	19	21	6	6	2	8
ECO Economics	3	4	5	3	2	1	1	0	0	0	0
FIN Finance	56	74	92	94	132	129	136	112	76	72	81
MGT Management	112	104	106	97	93	87	83	89	86	94	87
MKT Marketing	53	52	67	44	39	49	51	54	46	50	59
0000 Undeclared	60	82	107	126	122	117	102	102	105	81	78
NM Non-Matriculated	9	0	0	0	0	0	0	0	0	1	0
TOTAL:	466	490	534	519	514	508	492	469	428	404	430
PERCENT CHANGE:		5.2%	9.0%	-2.8%	-1.0%	-1.2%	-3.1%	-4.7%	-8.7%	-5.6%	6.4%



The Peter J. Tobin College of Business (34)
 Student Enrollment - Graduate Division
 Queens, Rome, and Manhattan
 Fall 1997 - Fall 2006

		Queens Campus									
PROGRAM		1997	1998	1999	2000	2001	2002	2003	2004	2005	2006
Master in Business Administration (MBA)		753	727	671	610	488	470	456	433	411	352
BUS	Business Administration	-	-	-	-	-	-	-	-	-	98
	Public Accounting	-	-	-	-	-	-	-	-	-	18
	Computer Info Systems / Decision Science	-	-	-	-	-	-	-	-	-	3
	Finance	-	-	-	-	-	-	-	-	-	29
	International Business	-	-	-	-	-	-	-	-	-	13
	Executive Management	-	-	-	-	-	-	-	-	-	11
	Marketing	-	-	-	-	-	-	-	-	-	24
ACC	Accounting	0	0	0	0	0	0	1	0	0	0
ACC1	Public Accounting	71	71	62	55	41	37	66	75	74	41
ACC2	Accounting	0	0	0	0	0	1	0	0	0	0
CIS	Computer Info System/Decision Sciences ⁵	83	63	59	66	70	33	26	27	25	13
CON	Controllership	0	0	0	0	0	0	0	0	1	1
ECO	Economics	8	8	5	4	1	1	0	0	0	0
FIN	Finance	326	353	320	275	194	209	184	164	137	78
INTB	International Business	-	-	12	17	18	31	29	24	23	18
MGT1	Executive Management	114	105	94	76	81	75	77	65	53	34
MKT	Marketing	116	108	103	108	78	74	68	75	93	67
TAX	Taxation	35	19	16	9	5	9	5	3	5	2
Master in Science (MS)		2	6	13	30	39	50	60	75	86	83
ACC	Accounting	-	-	-	-	-	-	19	22	33	38
ACC1	Public Accounting	-	-	-	-	-	8	1	0	0	0
ACC2	Accounting	2	6	13	23	23	18	6	9	7	12
FAP	Forecasting and Planning	-	-	-	-	2	1	0	0	0	0
PSL	Purch & Supply Leadership (MS)	-	-	-	2	0	0	0	0	0	0
TAX	Taxation	-	-	-	5	14	23	34	44	46	33
Advanced Certificate (APCRT)		13	15	17	17	9	8	8	11	4	4
ACC1	Public Accounting	6	4	3	4	4	4	5	7	2	2
CIS	Computer Info System/Decision Sciences ⁵	3	4	5	1	0	2	1	0	0	0
CON	Controllership	-	-	3	-	-	-	-	-	-	1
FIN	Finance	2	3	4	4	2	1	0	2	1	0
MGT1	Executive Management	1	2	1	5	2	1	0	0	0	0
MKT	Marketing	-	-	-	2	1	0	1	1	0	0
TAX	Taxation	1	2	1	1	0	0	1	1	1	1
9999	Grad/Undergrad Tuition	-	6	-	-	-	-	-	-	-	-
0000	Undeclared	89	13	4	0	0	0	0	1	0	0
NM	Non-Matriculated	0	6	2	15	1	4	2	0	1	1
TOTAL QUEENS:		857	773	707	672	537	532	526	520	502	440
PERCENT CHANGE:			-9.8%	-8.5%	-5.0%	-20.1%	-0.9%	-1.1%	-1.1%	-3.5%	-12.4%

Note: Beginning in fall 2006, New MBA graduate students are coded as Business Administration (BUS) with a specific concentration.

⁵ Formerly Quantitative Analysis

⁶ Formerly Risk Management and Insurance



The Peter J. Tobin College of Business (34)
 Student Enrollment - Graduate Division
 Queens, Rome, and Manhattan
 Fall 1997 - Fall 2006

Rome Campus										
PROGRAM	1997	1998	1999	2000	2001	2002	2003	2004	2005	2006
Master in Business Administration (MBA)	54	76	70	46	54	49	46	51	42	41
BUS Business Administration	-	-	-	-	-	-	-	-	-	13
Finance	-	-	-	-	-	-	-	-	-	1
International Business	-	-	-	-	-	-	-	-	-	7
Marketing	-	-	-	-	-	-	-	-	-	5
ACC1 Public Accounting	1	0	0	0	0	0	0	0	0	0
FIN Finance	31	48	44	35	38	31	21	25	15	13
INTB International Business	0	0	0	0	0	3	13	15	13	8
MGT1 Executive Management	12	1	1	0	0	0	0	0	0	0
MKT Marketing	10	27	25	11	16	15	12	11	14	7
Advanced Certificate (APCRT)	-	1	0	0	0	0	0	0	0	0
MKT Marketing	-	1	0	0	0	0	0	0	0	0
0000 Undeclared	4	0	0	0	0	0	0	0	0	0
NM Non-Matriculated	0	0	0	1	1	1	1	0	0	0
TOTAL ROME:	58	77	70	47	55	50	47	51	42	41
PERCENT CHANGE:		32.8%	-9.1%	-32.9%	17.0%	-9.1%	-6.0%	8.5%	-17.6%	-2.4%

Manhattan Campus										
PROGRAM	1997	1998	1999	2000	2001	2002	2003	2004	2005	2006
Master in Business Administration (MBA)	-	-	-	-	52	45	40	52	63	70
BUS Business Administration	-	-	-	-	52	45	40	52	31	40
Public Accounting	-	-	-	-	-	-	-	-	-	2
Finance	-	-	-	-	-	-	-	-	-	5
Risk Management & Insurance	-	-	-	-	-	-	-	-	31	33
ACC 1 Public Accounting	-	-	-	-	-	-	1	1	3	2
ACT Actuarial Science	-	-	-	-	1	-	-	-	-	-
FIN Finance	-	-	-	-	-	-	7	26	29	28
RMI Risk Management & Insurance	-	-	-	-	51	45	32	25	-	-
Master in Science (MS)	-	-	-	-	18	19	13	23	45	72
ACC 1 Public Accounting	-	-	-	-	-	-	-	-	5	12
MGTR Management of Risk (MS) ⁶	-	-	-	-	18	19	13	22	35	49
TAX Taxation	-	-	-	-	-	-	-	1	5	11
Advanced Certificate (APCRT)	-	-	-	-	-	-	-	-	-	1
ACC 1 Public Accounting	-	-	-	-	-	-	-	-	-	1
TOTAL MANHATTAN:					70	64	53	75	108	143
PERCENT CHANGE:						-8.6%	-17.2%	41.5%	44.0%	32.4%

QUEENS, ROME & MANHATTAN TOTAL:	915	850	777	719	662	646	626	646	652	624
PERCENT CHANGE:		-7.1%	-8.6%	-7.5%	-7.9%	-2.4%	-3.1%	3.2%	0.9%	-4.3%

Notes: The College of Insurance merged with St. John's University as of June 1, 2001 to form the Manhattan campus.

For reference purposes: 83 graduate students in fall 2000.

Beginning in fall 2006, New MBA graduate students are coded as Business Administration (BUS) with a specific concentration.

⁵ Formerly Quantitative Analysis

⁶ Formerly Risk Management and Insurance



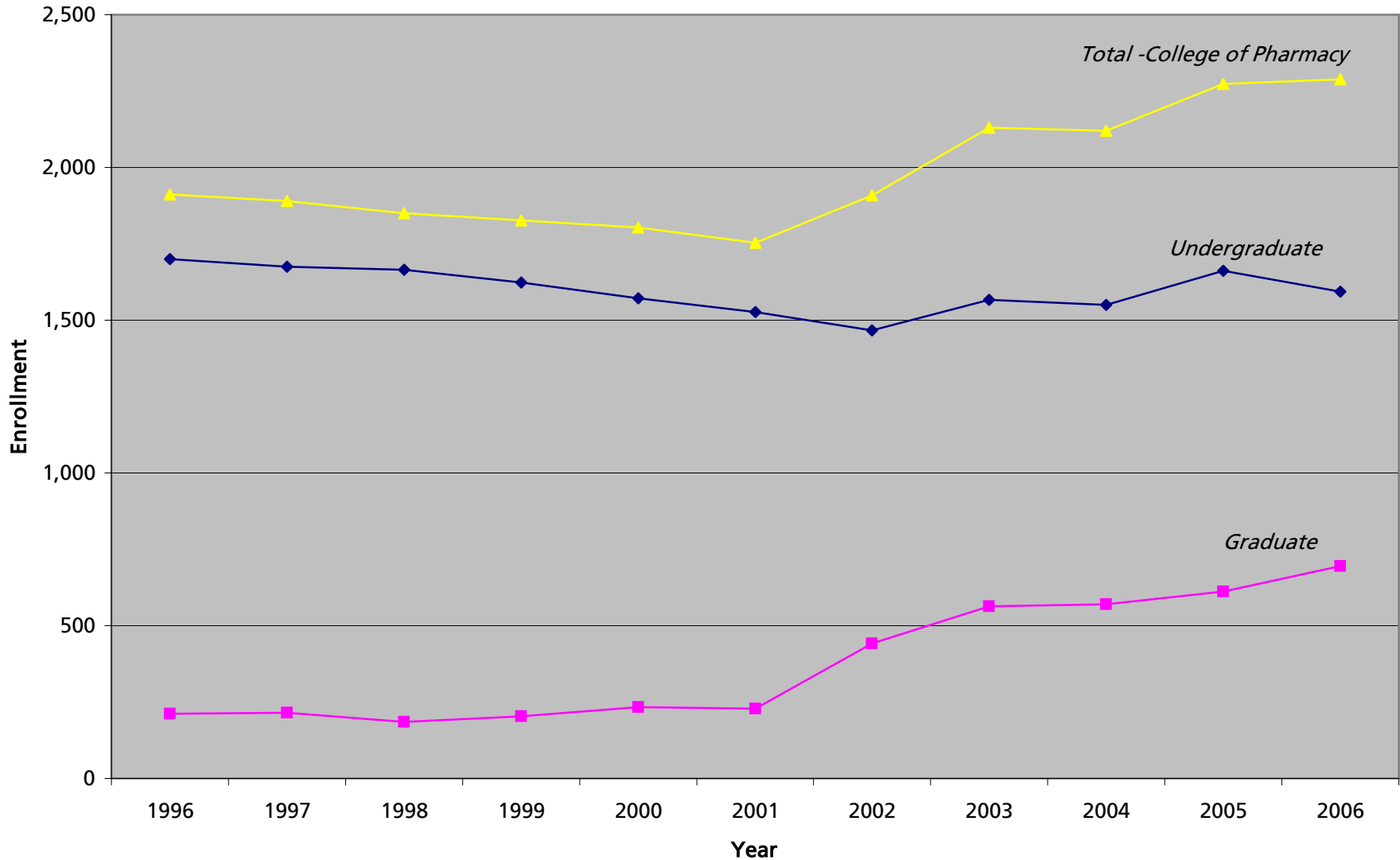
The Peter J. Tobin College of Business (84)
 Student Enrollment - Graduate Division
 Staten Island Campus
 Fall 1996 - Fall 2006

PROGRAM	1996	1997	1998	1999	2000	2001	2002	2003	2004	2005	2006
Master in Business Administration (MBA)	215	210	173	133	117	84	80	58	63	60	45
BUS Business Administration	0	0	0	0	0	0	0	0	0	0	16
Public Accounting	-	-	-	-	-	-	-	-	-	-	15
Executive Management	-	-	-	-	-	-	-	-	-	-	1
ACC1 Public Accounting	24	23	21	17	8	3	2	8	12	19	2
FIN Finance	118	117	91	79	73	63	55	36	39	27	16
MGT1 Executive Management	58	60	55	35	36	18	20	11	11	13	11
TAX Taxation	15	10	6	2	0	0	3	3	1	1	0
Master in Science (MS)	0	2	14	21	13	26	19	21	6	9	3
ACC2 Accounting (BS/MS)	0	2	14	21	13	26	19	21	6	9	3
Advanced Certificate (APCRT)	0	0	0	0	1	1	1	0	0	0	0
ACC1 Public Accounting	0	0	0	0	1	1	1	0	0	0	0
0000 Undeclared	0	9	1	2	1	0	0	0	0	0	1
NM Non-Matriculated	15	0	0	0	0	1	0	0	0	0	0
TOTAL:	230	221	188	156	132	112	100	79	69	69	49
PERCENT CHANGE:		-3.9%	-14.9%	-17.0%	-15.4%	-15.2%	-10.7%	-21.0%	-12.7%	0.0%	-29.0%

Note: Beginning in fall 2006, New MBA graduate students are coded as Business Administration (BUS) with a specific concentration.



College of Pharmacy and Allied Health Professions Student Enrollment Fall 1996 - Fall 2006



Note: Beginning in 2002, 5th and 6th year PharmD students are coded as graduate students.



College of Pharmacy and Allied Health Professions (05)
 Student Enrollment - Undergraduate Division
 Queens Campus
 Fall 1996 - Fall 2006

PROGRAM	1996	1997	1998	1999	2000	2001	2002	2003	2004	2005	2006
MEDICAL TECHNOLOGY COMBINED	58	44	36	28	32	17	15	26	43	52	53
MED Medical Technology	58	44	36	27	31	16	15	26	43	52	53
MEDS Medical Tech - Self Pace ³	0	0	0	1	1	1	0	0	0	0	0
NURSING COMBINED ²	0	3	6	10	5	2	1	-	-	-	-
NUR Nursing ²	0	3	6	5	2	1	1	-	-	-	-
NURS Nursing - Self Pace ³	0	0	0	5	3	1	0	-	-	-	-
PHARMACY COMBINED	1,144	1,156	1,174	1,183	1,236	1,233	1,140	1,157	1,137	1,158	1,114
PHA Pharmacy ²	1,144	1,156	904	694	464	245	15	20	3	-	-
PHA6 Pharmacy 6 Yr - PharmD	-	-	270	466	729	933	1068	1114	1132	1,157	1,114
PHAS Pharmacy - Self Pace ³	-	-	-	23	43	55	57	23	2	1	0
PHYSICIAN ASSISTANT COMBINED	220	242	260	282	265	241	268	314	288	336	330
PNT Physician Assistant	220	242	260	268	250	225	250	302	286	334	329
PNTS Physician Assist - Self Pace ³	0	0	0	14	15	16	18	12	2	2	1
TOXICOLOGY COMBINED	44	48	51	42	20	26	34	61	67	101	82
TOX Toxicology	44	48	51	42	20	26	33	61	67	101	82
TOXS Toxicology - Self Pace ³	0	0	0	0	0	0	1	0	0	0	0
CYT Cytotechnology	0	0	0	0	1	0	0	3	3	0	0
PAT Pathologist Assistant	26	20	20	16	11	7	9	6	12	14	14
SLP Self-Pace ^{2,3}	206	159	115	61	-	-	-	-	-	-	-
0000 Undeclared	2	3	1	1	0	0	0	0	0	0	0
NM Non-Matriculated	0	0	2	0	1	0	0	0	0	0	0
TOTAL:	1,700	1,675	1,665	1,623	1,571	1,526	1,467	1,567	1,550	1,661	1,593
PERCENT CHANGE:		-1.5%	-0.6%	-2.5%	-3.2%	-2.9%	-3.9%	6.8%	-1.1%	7.2%	-4.09%

Note: Since 2002, 5th and 6th year PharmD students are coded as graduate students.

² No longer offered

³ Not a program

Prepared by: Office of Institutional Research (da)

Based on data as of 10/16/2006



College of Pharmacy and Allied Health Professions (25)
 Student Enrollment - Graduate Division
 Queens Campus
 Fall 1996 - Fall 2006

PROGRAM	1996	1997	1998	1999	2000	2001	2002	2003	2004	2005	2006
PHARMACY - SCIENCES COMBINED	143	140	119	106	120	103	110	113	122	130	151
PHA1 Pharmaceutical Sciences	141	138	115	104	119	103	110	113	122	130	151
PHA3 Pharmacy & Library Science	2	2	4	2	1	0	0	0	0	0	0
PHARMACY COMBINED	38	39	42	74	89	96	301	427	427	457	518
PHA Pharmacy ²	12	20	31	24	-	-	-	-	-	-	-
PHA6 Pharmacy 6Yr- PharmD	-	-	-	-	-	-	171	343	354	389	460
PHA2 Pharmacy Administration	26	19	11	12	16	16	22	25	23	22	22
PHA9 Pharmacy - Practitioner Opt.	-	-	-	38	73	80	108	59	50	46	36
MED Medical Technology	3	5	4	4	2	1	1	0	1	0	0
TOX Toxicology	15	13	13	16	15	16	19	16	19	20	23
9999 Grad/Undergrad Tuition	-	-	3	-	-	-	-	-	-	-	-
0000 Undeclared	0	18	2	2	1	0	0	0	0	0	0
NM Non-Matriculated	13	0	2	2	6	12	11	7	1	5	3
TOTAL:	212	215	185	204	233	228	442	563	570	612	695
PERCENT CHANGE:		1.4%	-14.0%	10.3%	14.2%	-2.1%	93.9%	27.4%	1.2%	7.4%	13.6%

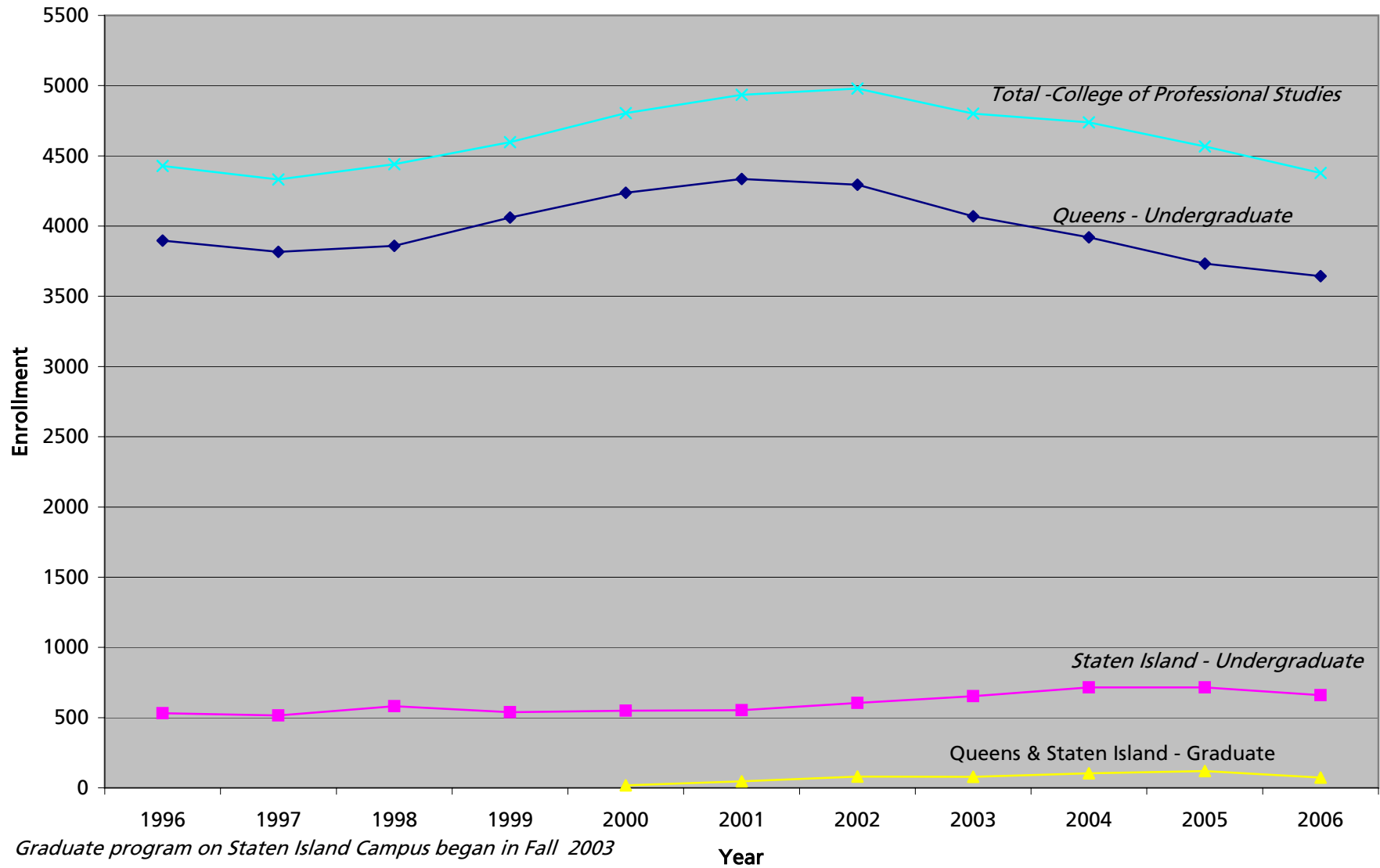
Note: Since 2002, 5th and 6th year PharmD students are coded as graduate students.

² No longer offered
 Prepared by: Office of Institutional Research (da)

Based on data as of 10/16/2006



College of Professional Studies Student Enrollment Fall 1996 - Fall 2006





College of Professional Studies (03)
Student Enrollment - Undergraduate Division
Queens Campus
Fall 1996 - Fall 2006

PROGRAM	1996	1997	1998	1999	2000	2001	2002	2003	2004	2005	2006
ADVERTISING COMMUNICATION COMBINED	0	0	0	0	0	0	0	0	0	47	96
ADV Advertising Communication	-	-	-	-	-	-	-	-	-	28	-
ADVC Advertising Communication (Creative Track)	-	-	-	-	-	-	-	-	-	6	80
ADVM Advertising Communication (Acc. Mgt)	-	-	-	-	-	-	-	-	-	10	11
ADVP Advertising Communication (Media Planning)	-	-	-	-	-	-	-	-	-	3	5
BUSINESS COMBINED	503	345	279	252	206	185	169	112	88	65	66
BUS Business Administration (AS)	396	299	243	213	173	155	145	94	73	57	61
BUS1 Business Admin (AS) Accounting Option	107	46	36	39	33	30	24	18	15	8	5
COMMUNICATION ARTS COMBINED	345	314	290	346	403	443	446	443	440	433	424
CAS Communication Arts	345	314	290	345	403	443	446	442	437	430	420
CAS1 Communication Arts/Sociology	0	0	0	1	0	0	0	1	3	2	4
CAS2 Communication Arts/Gov&Politics	-	-	-	-	-	-	-	-	-	1	0
COMPUTER SCIENCE & IT COMBINED	357	427	544	679	770	829	673	464	345	243	193
CUS Computer Science	331	397	516	624	562	504	368	259	189	125	121
CUS2/CUSB Computer Science Business	0	0	0	21	130	218	190	123	89	61	33
CUS3/CUST Computer Science Telecom.	0	0	0	8	44	78	93	69	51	37	13
CUSG Computer Science Media	-	-	-	-	-	-	-	-	-	1	4
CUSS Computer Science Security Systems	-	-	-	-	-	-	-	-	-	-	2
CUS1 Microcomputer Systems ²	26	30	28	26	34	29	22	13	-	-	-
IT Informaton Technology	-	-	-	-	-	-	-	-	16	1	2
ITB Informaton Technology Business	-	-	-	-	-	-	-	-	-	14	12
ITG Informaton Technology Graphic Design	-	-	-	-	-	-	-	-	-	1	2
ITT Informaton Technology Telecomm.	-	-	-	-	-	-	-	-	-	3	4
CRIMINAL JUSTICE COMBINED	732	675	619	592	594	532	545	535	529	509	498
CRJ Criminal Justice (BS)	584	565	541	534	527	468	492	501	509	456	448
CRJ1 Criminal Justice (AS)	147	108	78	52	48	40	40	30	19	23	18
CRJ2 Criminal Justice/Sociology	1	1	0	1	0	0	0	1	1	6	6
CRJ3 Criminal Justice/Gov't & Politics	0	1	0	0	0	0	0	2	0	1	0
CRJ5 Criminal Justice - International Spec.	0	0	0	2	5	5	2	0	0	0	0
CRJ6 Criminal Justice - Legal Studies Spec.	0	0	0	3	14	19	11	1	0	0	0
CRJF Criminal Justice - Forensic Psychology	-	-	-	-	-	-	-	-	-	23	26
ELECTRONIC DATA PROCESS COMB	100	65	59	55	54	40	35	21	1	-	-
EDP Electronic Data Processing (AS) ²	84	56	42	40	40	31	23	15	1	-	-
EDP1 Microcomputer Tech (AS) ²	16	9	17	15	14	9	12	6	-	-	-
HEALTH CARE COMBINED	193	172	162	139	121	102	97	97	113	105	95
HSA Health Services Administration	193	171	162	139	121	102	97	97	112	104	95
HSA2 Health Services Administration/Sociology	0	1	0	0	0	0	0	0	1	1	0
JOURNALISM COMBINED	39	49	54	72	87	97	106	116	144	162	172
JOU Journalism	39	49	54	72	87	96	106	116	142	160	171
JOU1 Journalism/Sociology	-	-	-	-	-	-	-	-	1	1	0
JOU2 Journalism - Government & Politics	0	0	0	0	0	1	0	0	1	1	1
LEGAL STUDIES COMBINED	271	217	199	192	176	169	236	290	305	349	375
LES Legal Studies (BS)	207	176	165	169	156	151	209	271	289	329	363
LES1 Legal Studies (AS)	64	41	33	19	17	16	21	15	13	16	11
LES2 Legal Studies/Sociology	0	0	0	0	0	0	0	1	3	0	0
LES3 Legal Studies/Gov't & Politics	0	0	1	1	0	0	0	0	0	0	0
LES9 Legal Studies (Certificate)	0	0	0	3	3	2	6	3	0	4	1
TELECOMMUNICATION COMBINED	5	25	50	56	70	67	76	77	76	48	28
TEL Telecommunications (BS)	3	15	35	43	39	31	29	29	26	20	11
TEL1 Telecommunications (AS)	2	10	15	12	9	5	7	3	2	2	0
TEL2/TELB Telecommunications Business Option	0	0	0	1	16	23	33	37	37	19	13
TEL3/TELU Telecommunications-Multi Media	0	0	0	0	6	8	7	8	11	7	2
TELC Telecommunications Corporate Security	-	-	-	-	-	-	-	-	-	-	2

² No Longer Offered



**College of Professional Studies (03)
Student Enrollment - Undergraduate Division
Queens Campus
Fall 1996 - Fall 2006**

PROGRAM	1996	1997	1998	1999	2000	2001	2002	2003	2004	2005	2006
TELEVISION COMBINED	0	0	20	56	68	87	93	107	121	119	143
TVF Television And Film Prod (BS)	0	0	18	48	52	67	72	80	81	75	136
TVF1 Television And Film(AS)	0	0	0	0	3	7	4	5	8	8	7
TVF2 Television And Film Prod/Video	0	0	1	5	8	5	9	13	9	10	-
TVF3 Tele And Film Prod/Film Studies	0	0	1	3	5	8	8	9	23	26	-
ADS Administrative Studies	0	0	0	7	32	50	59	57	48	38	46
CERT Certificate Program ⁶	20	13	0	0	0	0	0	0	0	0	0
FSA Funeral Service Administration	17	19	20	18	15	13	14	16	10	8	6
HMT Hospitality Management	13	39	62	100	109	102	85	90	81	80	102
HSC Human Services ¹⁰	-	-	-	-	-	31	42	65	64	51	40
LAS Liberal Arts (AA)	873	566	393	298	257	233	226	237	176	142	95
LIT Literature & Speech	12	8	11	11	11	8	5	4	1	0	0
PCP Prof Career Photography ²	1	-	-	-	-	-	-	-	-	-	-
PSS Para-Prof School Service (AS) ²	4	3	1	1	3	1	-	-	-	-	-
REM Real Estate Management ²	0	0	0	0	4	3	-	-	-	-	-
SEC Security Administration	0	2	0	2	0	0	0	0	0	0	0
SPM Sport Management	160	178	202	205	251	290	325	323	330	320	355
SSC Social Sciences	27	27	26	14	20	26	20	10	5	3	2
0000 Undeclared	177	586	792	892	935	993	1017	977	1017	986	875
NM Non-Matriculated	28	0	4	7	3	7	3	3	1	3	2
TOTAL:	3,877	3,730	3,787	3,994	4,189	4,308	4,272	4,044	3,895	3,711	3,613
PERCENT CHANGE:		-3.8%	1.5%	5.5%	4.9%	2.8%	-0.8%	-5.3%	-3.7%	-4.7%	-2.6%
FORMERLY METROPOLITAN COLLEGE*											
LST Liberal Studies*	18	53	64	57	48	28	23	25	25	22	31
Undeclared/Non-Matriculated	2	33	9	9	-	-	-	-	-	-	-
TOTAL:	20	86	73	66	48	28	23	25	25	22	31
TOTAL COLLEGE OF PROFESSIONAL STUDIES:	3,897	3,816	3,860	4,060	4,237	4,336	4,295	4,069	3,920	3,733	3,644
PERCENT CHANGE:		-2.1%	1.2%	5.2%	4.4%	2.3%	-0.9%	-5.3%	-3.7%	-4.8%	-2.4%

Notes:

² No longer offered

⁶ In Fall 1998, included in major

¹⁰ Formerly offered in The School of Education

*Undergraduate Metropolitan College merged with College of Professional Studies as of Summer of 2000.

As of Fall 2005, some major codes were changed to take concentrations into consideration and standardize them in Banner.



**College of Professional Studies (53)
Student Enrollment - Undergraduate Division
Staten Island Campus
Fall 1996 - Fall 2006**

PROGRAM	1996	1997	1998	1999	2000	2001	2002	2003	2004	2005	2006
BUSINESS COMBINED	174	137	159	132	122	140	130	112	105	64	42
BUS Business Administration (AS)	144	113	136	120	119	134	126	112	105	64	42
BUS1 Business Admin (AS) Accounting Opt	30	24	23	12	3	6	4	0	0	0	0
CRIMINAL JUSTICE COMBINED	178	179	166	136	106	90	91	93	110	121	105
CRJ Criminal Justice	115	125	120	107	85	76	67	68	78	100	86
CRJ1 Criminal Justice (AS)	63	54	46	29	21	14	24	25	32	21	19
LEGAL STUDIES COMBINED	52	63	62	63	74	84	113	129	128	125	106
LES Legal Studies (BS)	34	39	42	47	60	69	92	111	106	110	96
LES1 Legal Studies (AS)	18	24	18	15	12	15	21	17	20	14	9
LES9 Legal Studies	0	0	2	1	2	0	0	1	2	1	1
TELECOMMUNICATIONS COMBINED	0	2	7	11	14	12	12	16	19	15	6
TEL Telecommunications (BS)	0	2	7	8	10	10	9	11	12	14	6
TEL1 Telecommunications (AS)	0	0	0	3	2	1	2	2	1	1	0
TEL2 Telecommunications-Bus Opt	0	0	0	0	2	1	1	3	6	0	0
TELEVISION COMBINED	0	0	2	11	17	25	24	23	22	16	14
TVF Television & Film Production (BS)	0	0	0	6	11	18	18	20	17	14	14
TVF1 Television & Film (AS)	0	0	0	0	2	3	3	1	2	0	0
TVF2 Television & Film Prod: Video	0	0	2	3	2	2	2	1	2	2	0
TVF3 Television & Film Prod: Film Std	0	0	0	2	2	2	1	1	1	0	0
TRANSPORTATION COMBINED	0	0	11	3	1	1	0	0	0	0	0
TRA Transportation	0	0	0	1	0	0	0	0	0	0	0
TRA1 Transportation & Logistics ⁷	0	0	11	2	1	1	0	0	0	0	0
ADS Administrative Studies	0	0	0	1	1	1	1	0	1	0	2
CAS Communication Arts	68	75	86	81	102	102	141	165	161	144	105
CERT Certificate Program ⁶	3	3	-	-	-	-	-	-	-	-	-
FSA Funeral Service Administration	6	6	9	7	13	5	9	6	9	5	6
HSA Health Services Administration	0	1	0	7	9	5	0	0	0	0	0
HMT Hospitality Management	0	3	17	22	25	27	19	17	18	22	20
SCA Security & Corporate Admin	0	0	0	1	1	1	0	0	0	0	0
SEC Security Administration	6	3	3	1	0	1	1	1	1	1	1
SPM Sport Management	32	30	30	40	43	35	43	44	59	61	62
0000 Undeclared	11	14	28	22	21	24	20	47	83	141	191
NM Non-Matriculated	2	0	1	0	0	0	0	0	0	0	0
TOTAL:	532	516	581	538	549	553	604	653	716	715	660
PERCENT CHANGE:		-3.0%	12.6%	-7.4%	2.0%	0.7%	9.2%	8.1%	9.6%	-0.1%	-7.7%

Notes:

As of Fall 2005, some major codes were changed to take concentrations into consideration and standardize them in Banner.

⁶ Beginning in Fall 1998, included in major

⁷ Formerly offered in Notre Dame College



**College of Professional Studies
Student Enrollment - Graduate Division
Fall 1996 - Fall 2006**

Queens Campus (23)

PROGRAM	1996	1997	1998	1999	2000	2001	2002	2003	2004	2005	2006
CRL Criminal Justice Leadership	-	-	-	-	16	46	78	54	78	82	46
NM Non-Matriculated	-	-	-	-	2	0	2	1	1	2	1
TOTAL:					18	46	80	55	79	84	47
PERCENT CHANGE:					155.6%	73.9%	-31.3%	43.6%	6.3%	-44.0%	

Staten Island Campus (83)

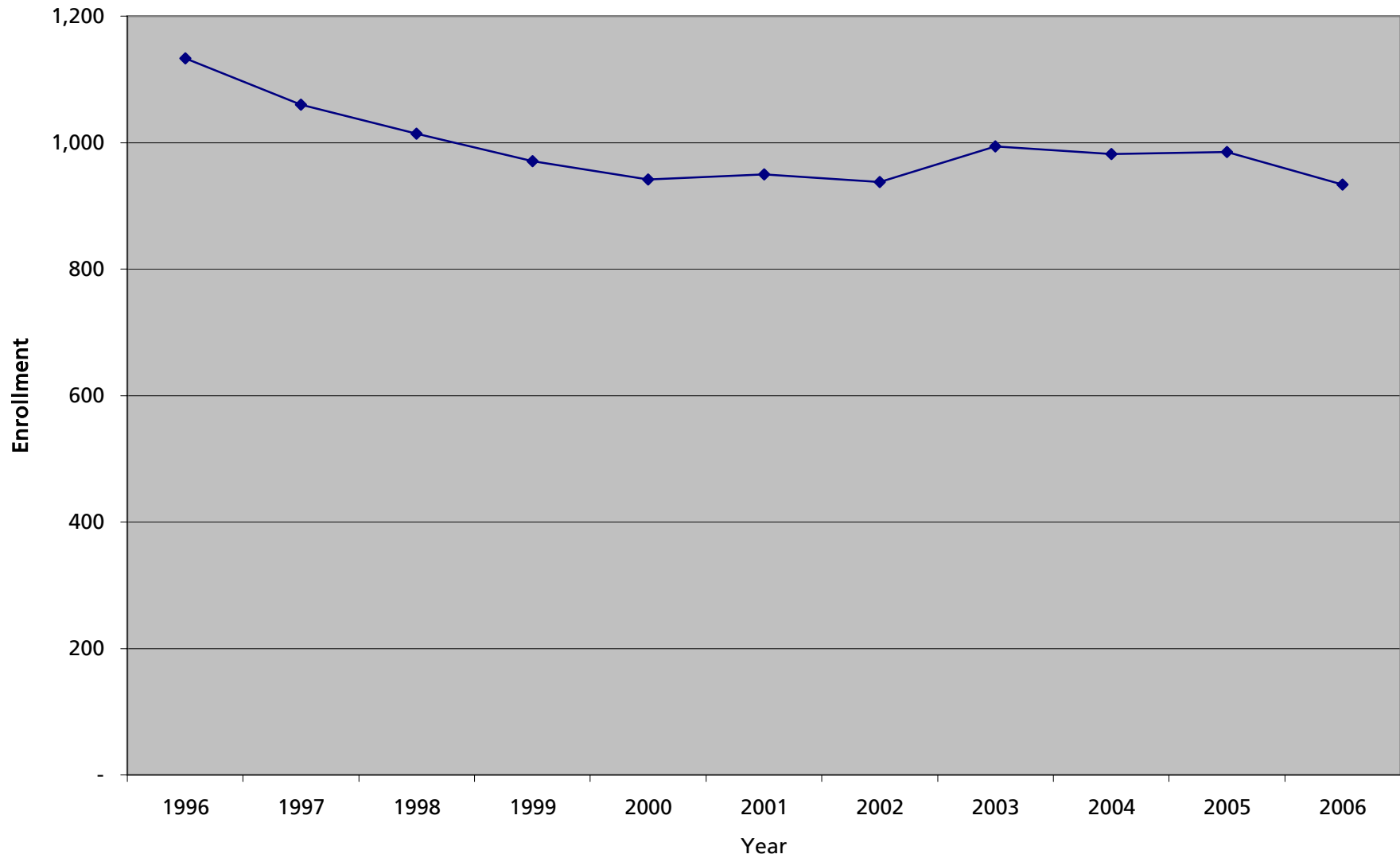
PROGRAM	1996	1997	1998	1999	2000	2001	2002	2003	2004	2005	2006
CRL Criminal Justice Leadership	-	-	-	-	-	-	-	24	23	32	22
0000 Undeclared	-	-	-	-	-	-	-	-	-	3	5
NM Non-Matriculated	-	-	-	-	-	-	-	-	1	1	0
TOTAL:								24	24	36	27
PERCENT CHANGE:								0.0%	50.0%	-25.0%	

Queens and Staten Island Total:					18	46	80	79	103	120	74
PERCENT CHANGE:					155.6%	73.9%	-1.3%	30.4%	16.5%	-38.3%	

*Note: Queens: College of Professional Studies- Graduate Division started in Fall 2000
Staten Island: College of Professional Studies-Graduate Division began in Fall 2003
9 S.I. Students were coded as Queens in Fall 2002.*



School of Law Student Enrollment Fall 1996 - Fall 2006





School of Law (28)
Student Enrollment - Graduate Division
Queens Campus
Fall 1996 - Fall 2006

PROGRAM		1996	1997	1998	1999	2000	2001	2002	2003	2004	2005	2006
LAW	Law	1,133	1,060	1,014	960	923	936	918	974	966	964	922
LLMB	Masters In Bankruptcy (LLM)	-	-	-	11	19	14	20	20	16	16	11
NM	Non-Matriculated	-	-	-	-	-	-	-	-	-	5	1
TOTAL:		1,133	1,060	1,014	971	942	950	938	994	982	985	934
PERCENT CHANGE:			-6.4%	-4.3%	-4.2%	-3.0%	0.8%	-1.3%	6.0%	-1.2%	0.3%	-5.2%



High School Extension (09)
 Student Enrollment - Undergraduate Division
 Queens and Staten Island Campuses
 Fall 1996 - Fall 2006

Queens Campus

PROGRAM	1996	1997	1998	1999	2000	2001	2002	2003	2004	2005	2006
HSE High School Extension	1,983	1,466	1,288	1,351	1,215	1,339	1,431	1,593	1,512	1,693	1,721
TOTAL:	1,983	1,466	1,288	1,351	1,215	1,339	1,431	1,593	1,512	1,693	1,721
PERCENT CHANGE:		-26.1%	-12.1%	4.9%	-10.1%	10.2%	6.9%	11.3%	-5.1%	12.0%	1.7%

Staten Island Campus

PROGRAM	1996	1997	1998	1999	2000	2001	2002	2003	2004	2005	2006
HSE High School Extension	-	463	529	537	564	564	540	722	965	959	843
TOTAL:	-	463	529	537	564	564	540	722	965	959	843
			14.3%	1.5%	5.0%	0.0%	-4.3%	33.7%	33.7%	-0.6%	-12.1%

QUEENS & STATEN ISLAND TOTAL:	1,983	1,929	1,817	1,888	1,779	1,903	1,971	2,315	2,477	2,652	2,564
PERCENT CHANGE:		-2.7%	-5.8%	3.9%	-5.8%	7.0%	3.6%	17.5%	7.0%	7.1%	-3.3%

Note: In Fall 1996, all high school students were reported as undergraduates on the Queens campus.